

3900 E. NINE MILE ROAD
WARREN, MICHIGAN

INVESTMENT SALE
8,750 Square Feet



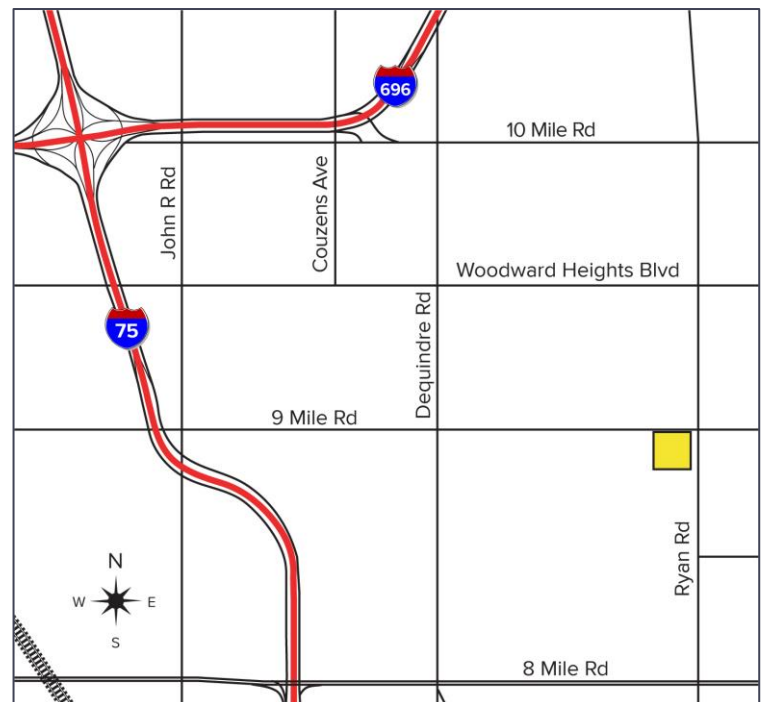
**SIGNATURE
ASSOCIATES**
KNOW SIGNATURE | KNOW RESULTS

THE YOUNG HOME FOR THE ELDERLY



PROPERTY FEATURES

- 8,750 square foot investment sale
- This assisted living facility has 18 units and is licensed for 20 beds
- Nice backyard with gazebo deck
- License State of Michigan, Adult Foster Care (AFC)
- Residential suite for resident manager on 2nd floor, or can be used as office
- Room to add 2nd ramp in front
- Limited competition in surrounding area!
- Financials available upon request
- Sale Price: \$750,000



For more information, please contact:

SCOTT ELLIOTT
(248) 948 4182
sellott@signatureassociates.com

SIGNATURE ASSOCIATES
One Towne Square, Suite 1200
Southfield, MI 48076
www.signatureassociates.com

3900 E. Nine Mile Road – Warren, Michigan

Investment Sale

18 units /
20 beds
AVAILABLE

Interior Photos



For more information, please contact:

SCOTT ELLIOTT
(248) 948 4182
sellott@signatureassociates.com

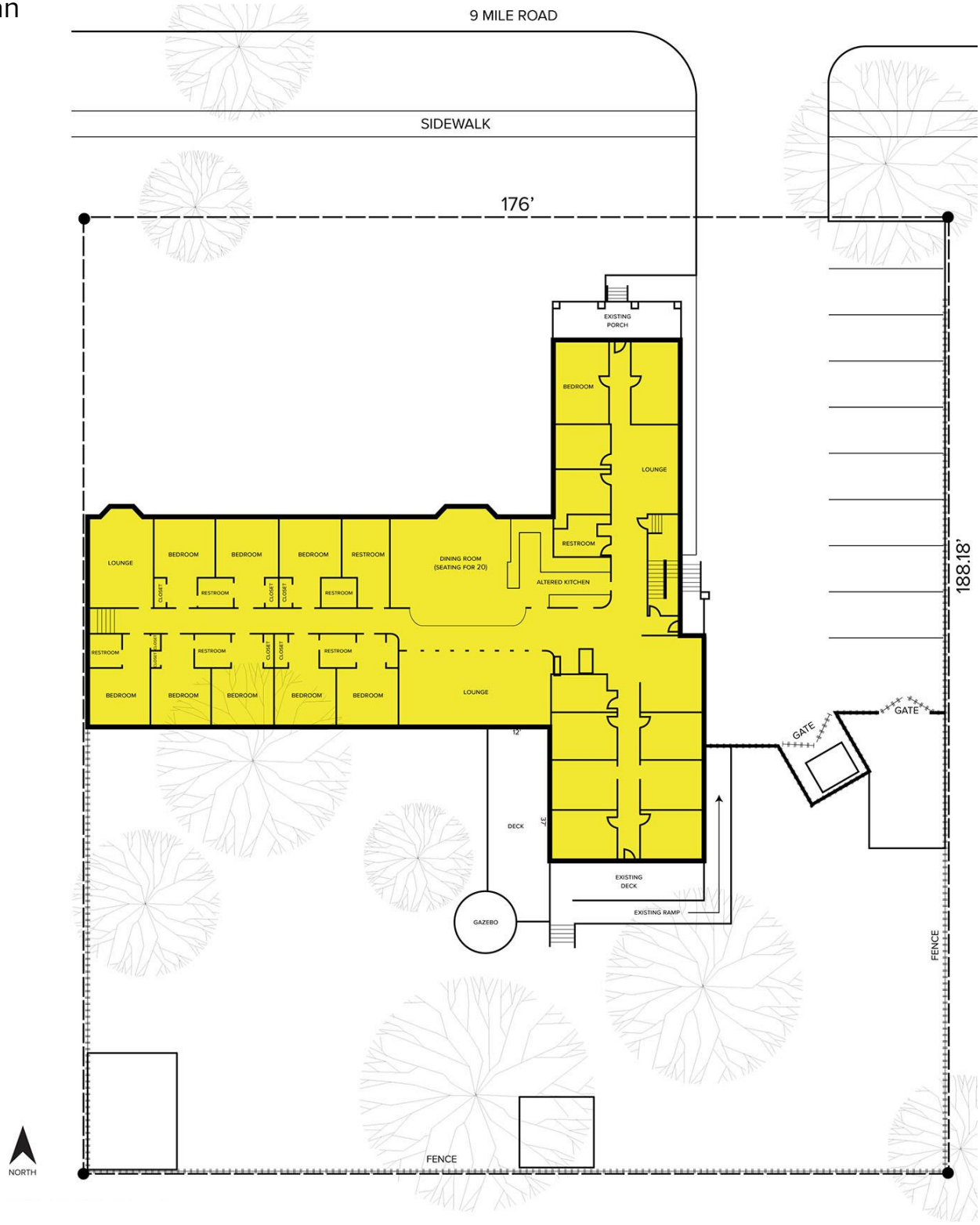
SIGNATURE ASSOCIATES
One Towne Square, Suite 1200
Southfield, MI 48076
www.signatureassociates.com

3900 E. Nine Mile Road – Warren, Michigan

Investment Sale

18 units /
20 beds
AVAILABLE

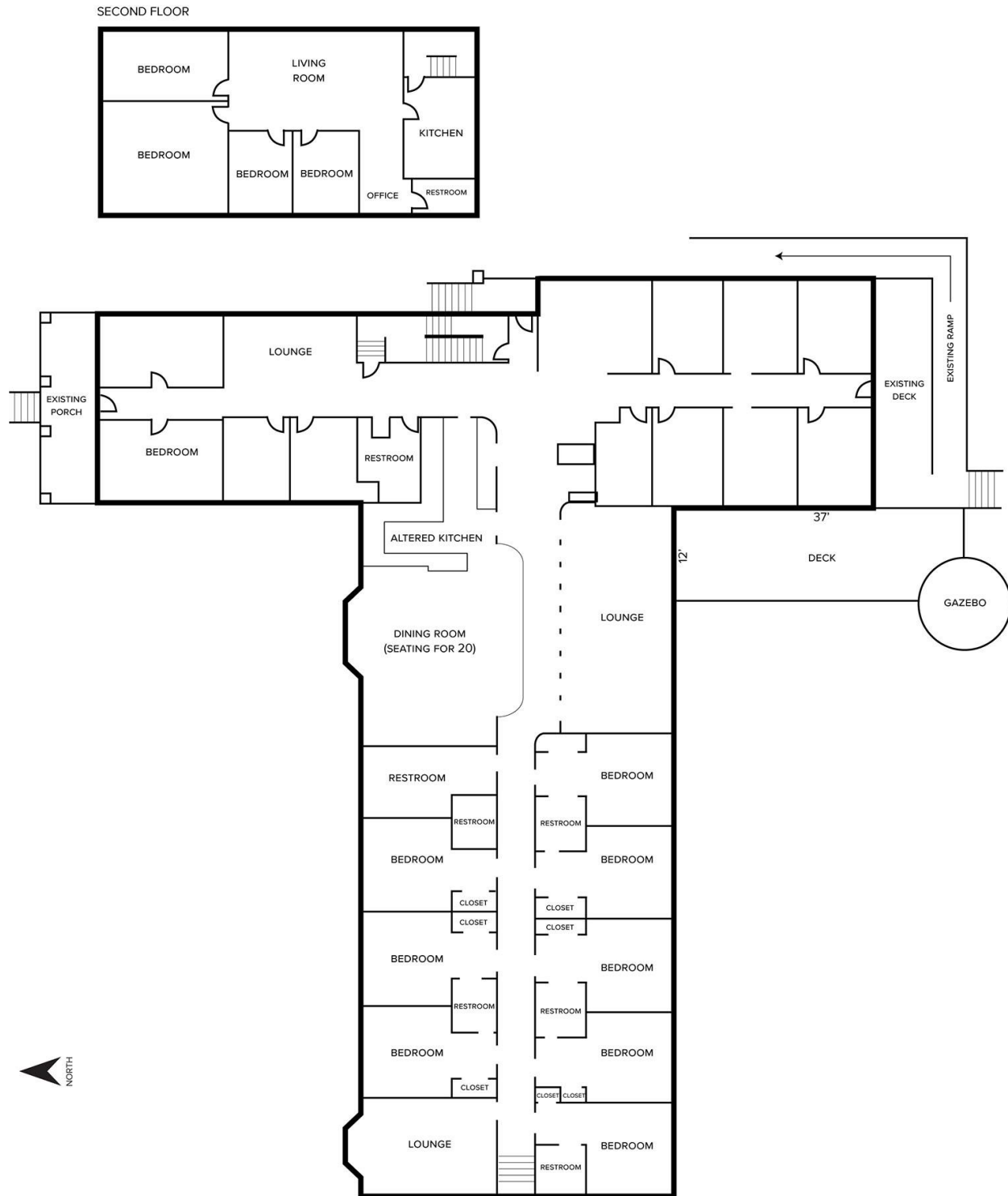
Site Plan



For more information, please contact:
SCOTT ELLIOTT
(248) 948 4182
sellott@signatureassociates.com

SIGNATURE ASSOCIATES
One Towne Square, Suite 1200
Southfield, MI 48076
www.signatureassociates.com

Floor Plan



For more information, please contact:
SCOTT ELLIOTT
(248) 948 4182
sellott@signatureassociates.com

SIGNATURE ASSOCIATES
One Towne Square, Suite 1200
Southfield, MI 48076
www.signatureassociates.com