

# FMB OAKLAND

FRUITVALE MEDICAL BUILDING

3022 International Blvd  
Oakland, CA

## FOR MORE INFORMATION:

**JAKE NORTON**

Senior Associate

+1 510 874 1997

[jake.norton@cbre.com](mailto:jake.norton@cbre.com)

Lic. 01905366

**CBRE**

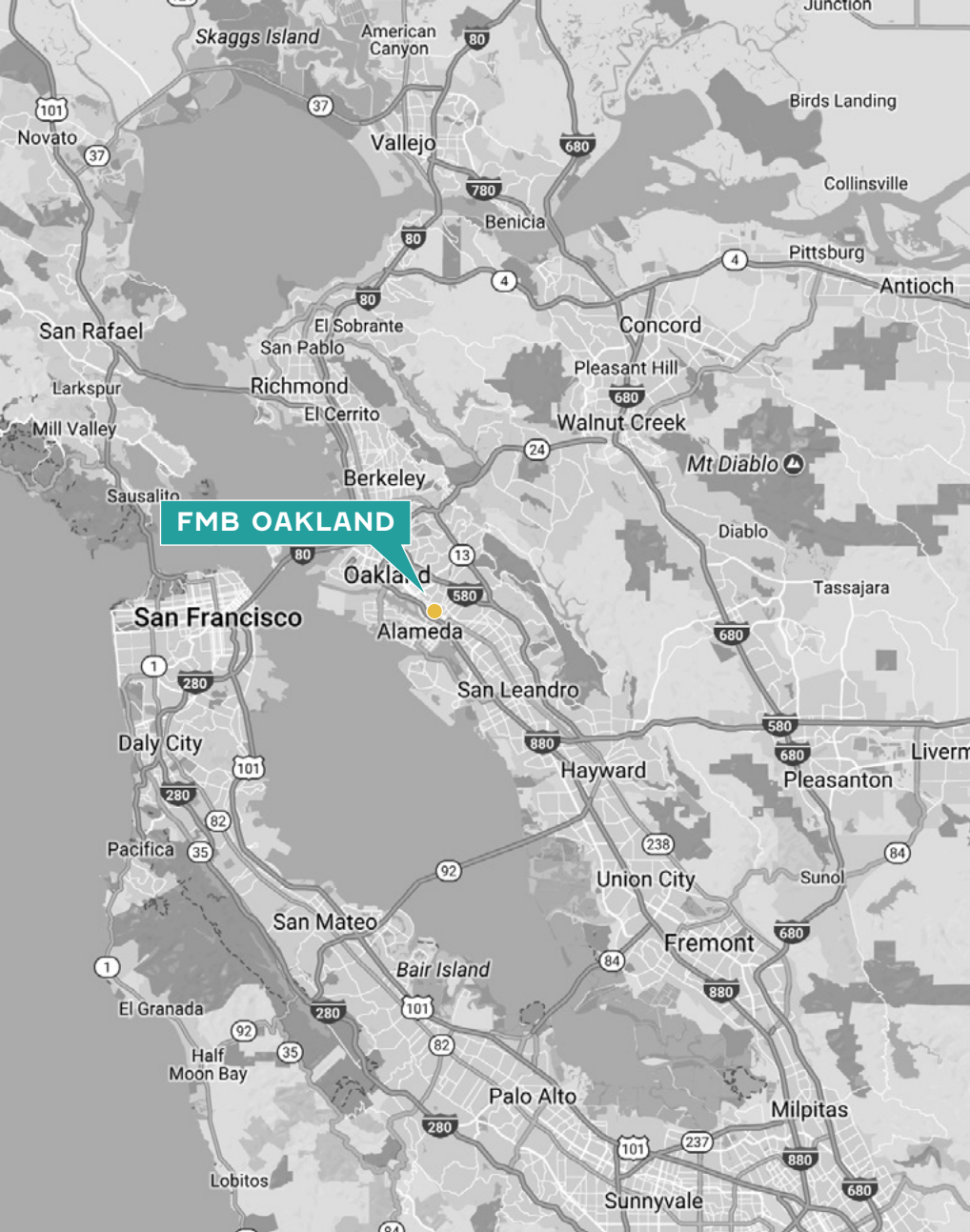




# FMB OAKLAND

FRUITVALE MEDICAL BUILDING

3022 International Blvd  
Oakland, CA



±5,023 RSF

FULL FLOOR IDENTITY ±0.3 MILES FROM BART

BART Commute Times:

- ±7 minutes to Downtown Oakland
- ±17 minutes to Downtown San Francisco
- ±28 minutes to Fremont
- ±28 minutes to Dublin/Pleasanton
- ±31 minutes to Richmond
- ±18 minutes to Downtown Berkeley



FOR MORE INFORMATION:

**JAKE NORTON**  
Senior Associate  
+1 510 874 1997  
jake.norton@cbre.com  
Lic. 01905366



# FMB OAKLAND

FRUITVALE MEDICAL BUILDING

3022 International Blvd  
Oakland, CA

## PROPERTY DETAILS

### CENTRAL FRUITVALE LOCATION

Only ±0.2 miles from I-880 and Only ±0.3 miles from Fruitvale BART, and ±0.2 miles from the Fruitvale Shopping Center featuring multiple lunch options

### FULL FLOOR IDENTITY

Rare full floor opportunity only ±0.3 miles from BART

### MULTIPLE OFFICE BUILDOUT

A full floor with multiple offices all featuring great unihibited views

### ART & MUSIC HUB

Fruitvale is Oakland's most vibrant art and music community, including the thriving Jingtletown neighborhood



### FOR MORE INFORMATION:

#### JAKE NORTON

Senior Associate

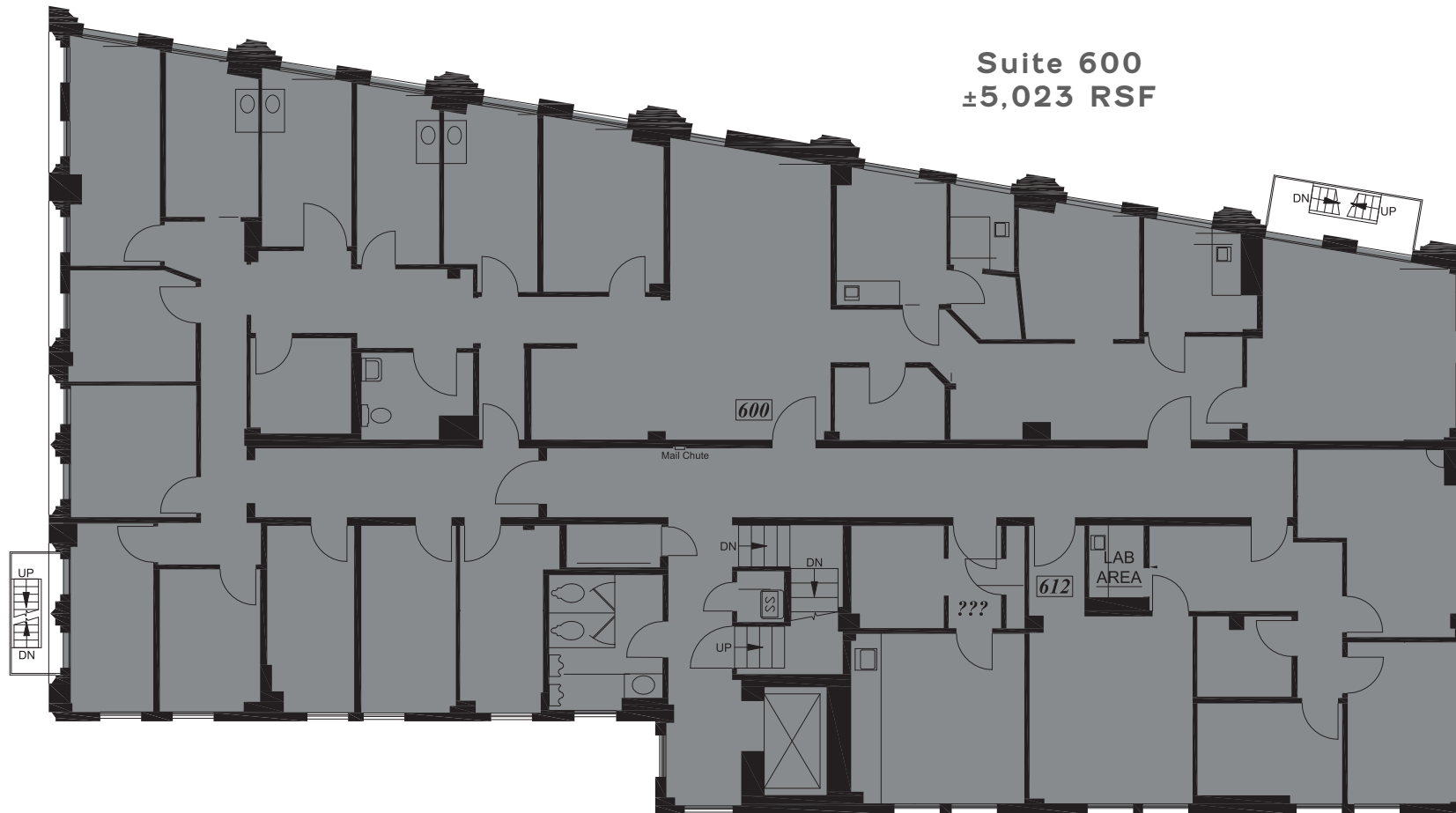
+1 510 874 1997

jake.norton@cbre.com

Lic. 01905366

# CBRE

## FLOOR PLAN



### FOR MORE INFORMATION:

**JAKE NORTON**  
Senior Associate  
+1 510 874 1997  
jake.norton@cbre.com  
Lic. 01905366



© 2018 CBRE, Inc. All rights reserved. This information has been obtained from sources believed reliable, but has not been verified for accuracy or completeness. You should conduct a careful, independent investigation of the property and verify all information. Any reliance on this information is solely at your own risk. CBRE and the CBRE logo are service marks of CBRE, Inc. All other marks displayed on this document are the property of their respective owners. Photos herein are the property of their respective owners. Use of these images without the express written consent of the owner is prohibited.



# FMB OAKLAND

FRUITVALE MEDICAL BUILDING

3022 International Blvd  
Oakland, CA

FMB OAKLAND

STICKY RICE CAFE  
BUI PHONG BAKERY

CHASE

A BETTER WAY



Bank of America

Domino's



FRUITVALE CENTER



FOODMAXX

BANK OF WEST

One Harrison BPO



Auto Zone



ExtraSpace Storage

at&t

SALLY BEAUTY

GameStop  
POWER TO THE PLAYERS

