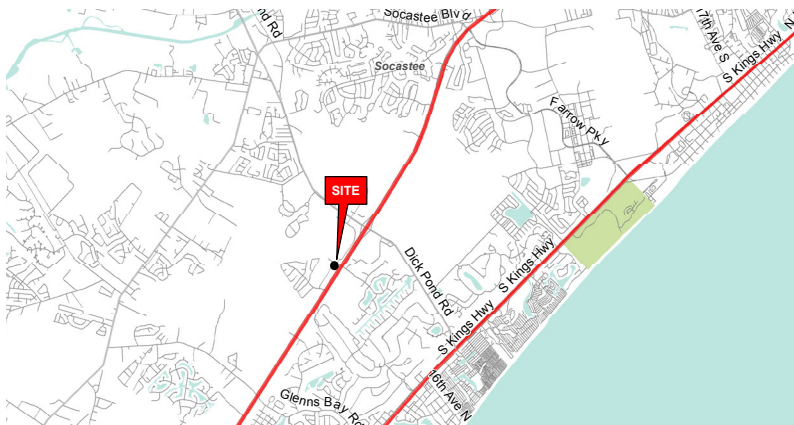




PROPERTY PHOTO

FORMER DENNY'S AVAILABLE

124 LOYOLA DR. | MYRTLE BEACH, SC 29588



LEASE INFORMATION

SPACE AVAILABLE: 4,650 SF
RATE: Please Call

PROPERTY DESCRIPTION

- Freestanding restaurant in the highly traveled Highway 17 Bypass corridor.
- \$11.7 billion in retail sales in Horry County (2018)
- 38,700 VPD on Highway 17 Bypass.
- Signalized access via Strand Dr.
- 74 parking spaces
- Myrtle Beach is a major tourist destination with over 19 million annual visitors
- Area retailers include:



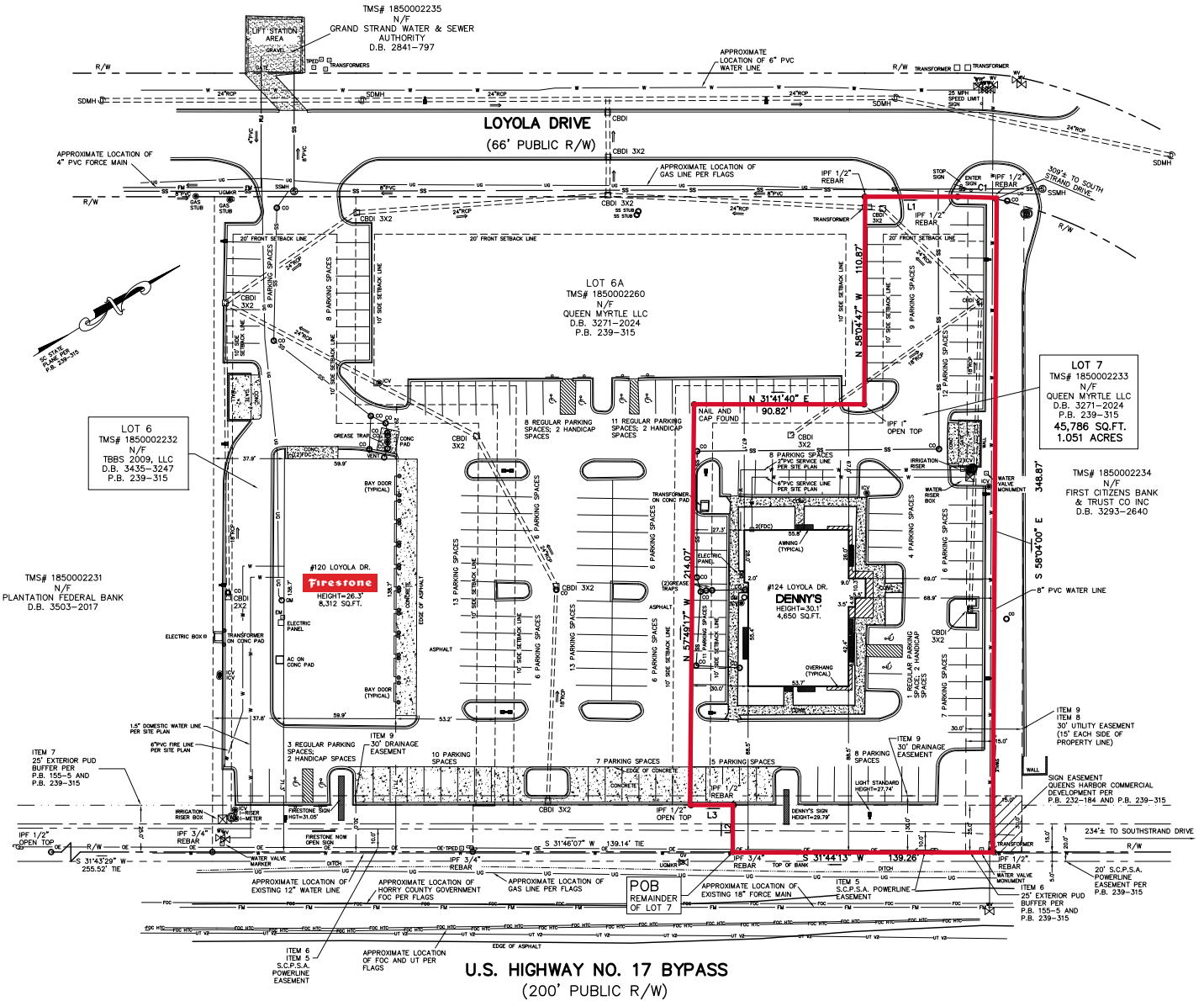
DEMOGRAPHICS (2018)

	1 MILE	3 MILE	5 MILE
POPULATION	2,898	44,483	86,485
AVERAGE HH INCOME	\$65,387	\$62,628	\$60,805
MEDIAN HH INCOME	\$55,813	\$50,856	\$51,418
BUSINESS ESTABLISHMENTS	194	1,853	3,536
DAYTIME EMPLOYMENT	2,396	19,212	33,524

© 2019 The Providence Group. All rights reserved. The information above has been obtained by sources deemed reliable. While we do not doubt its accuracy, we have not verified it and make no guarantee, warranty, or representation of it. It is your responsibility to independently confirm its accuracy and completeness. You and your advisors should conduct a careful, independent investigation of the property to determine to your satisfaction the suitability of the property for your needs.

FORMER DENNY'S AVAILABLE

124 LOYOLA DR. | MYRTLE BEACH, SC 29588



TRAFFIC COUNTS 2018 (SCDOT)

- 38,700 VDP on US-17 Byp S. (North of Site)
- 36,400 VDP on US-17 Byp S. (South of Site)

© 2019 The Providence Group. All rights reserved. The information above has been obtained by sources deemed reliable. While we do not doubt its accuracy, we have not verified it and make no guarantee, warranty, or representation of it. It is your responsibility to independently confirm its accuracy and completeness. You and your advisors should conduct a careful, independent investigation of the property to determine to your satisfaction the suitability of the property for your needs.



**Bell Mer
Housing Development**
230 Homes
Price Point
\$280,000 - \$320,000

AERIAL