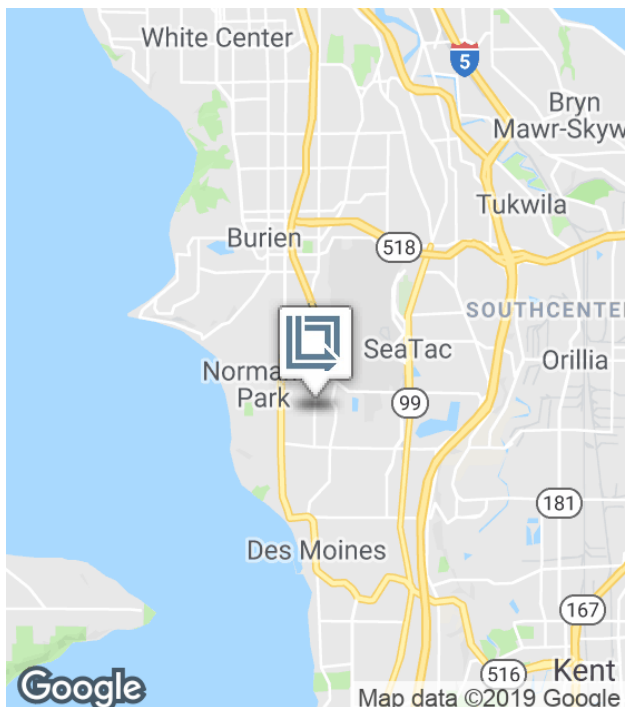


1,697 SF

Office Space For Lease



SeaTac Logistics Park 2, Bldg E

18900 8th Ave S, Suite 1200, SeaTac, WA 98148 USA

- 1,697 square feet (all office)
- Ample parking
- Located within 5 minutes of cargo entrance to SeaTac International Airport
- Spacious locations overlooking Mt. Rainier & airport runways

For more information:

Arie Salomon, SIOR, CCIM

+1 425 586 5636 • asalomon@nai-psp.com

Connor Powell

+1 425 586 5642 • cpowell@nai-psp.com

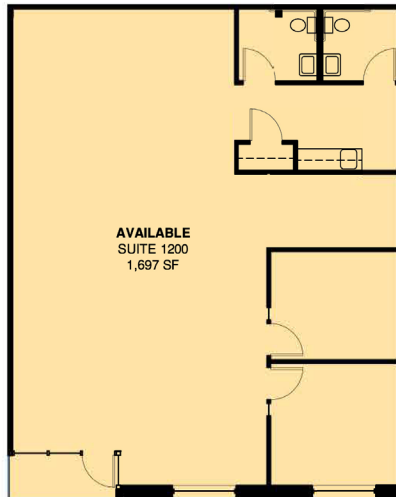



THE INFORMATION CONTAINED HEREIN HAS BEEN GIVEN TO US BY THE OWNER OF THE PROPERTY OR OTHER SOURCES WE DEEM RELIABLE. WE HAVE NO REASON TO DOUBT ITS ACCURACY, BUT WE DO NOT GUARANTEE IT. ALL INFORMATION SHOULD BE VERIFIED PRIOR TO PURCHASE OR LEASE.

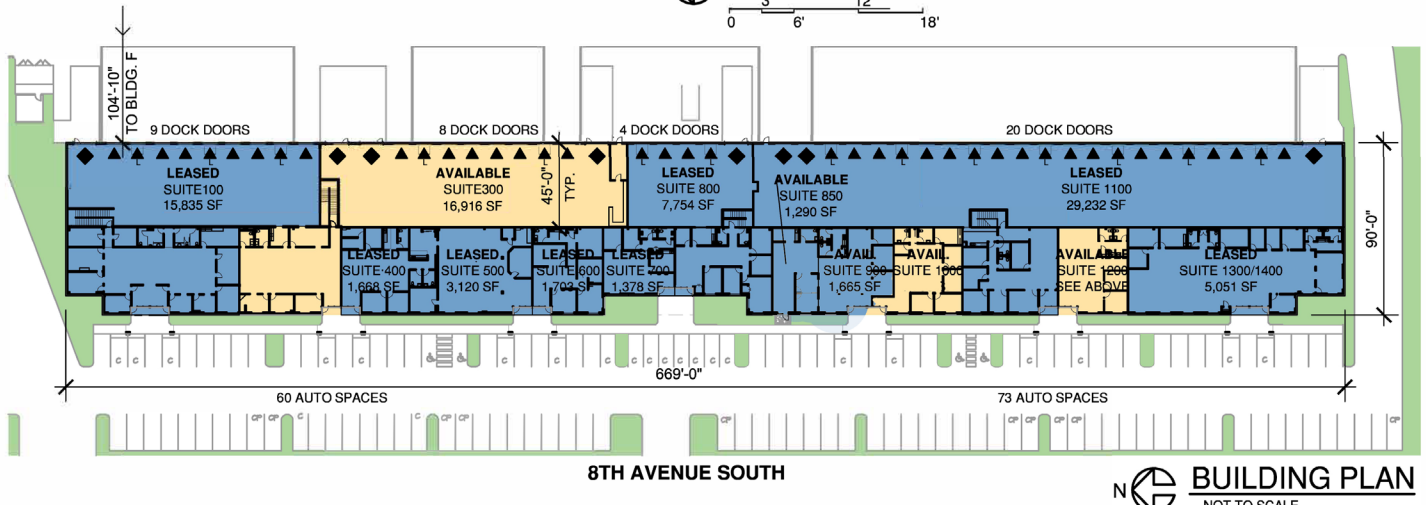
600 108th Avenue NE, Suite 340
Bellevue, WA 98004
+1 425 586 5600
nai-psp.com

1,697 SF

Office Space For Lease



N  SUITE 1200
0 3' 6' 12' 18'



N  BUILDING PLAN
NOT TO SCALE