

2000 Oxford Drive

Bethel Park, PA 15102



Available **Premises**

4th Floor

- 3,170 RSF

5th Floor

- 2,602 RSF - 7,306 RSF

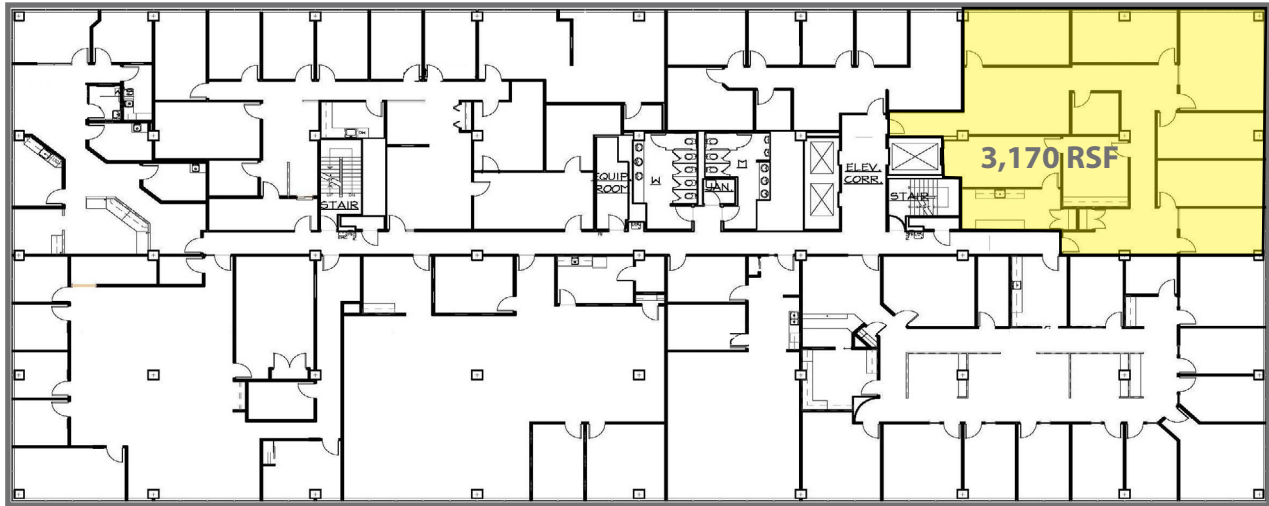
6th Floor

- 877 RSF
- 7,183 RSF (Available 4/21)

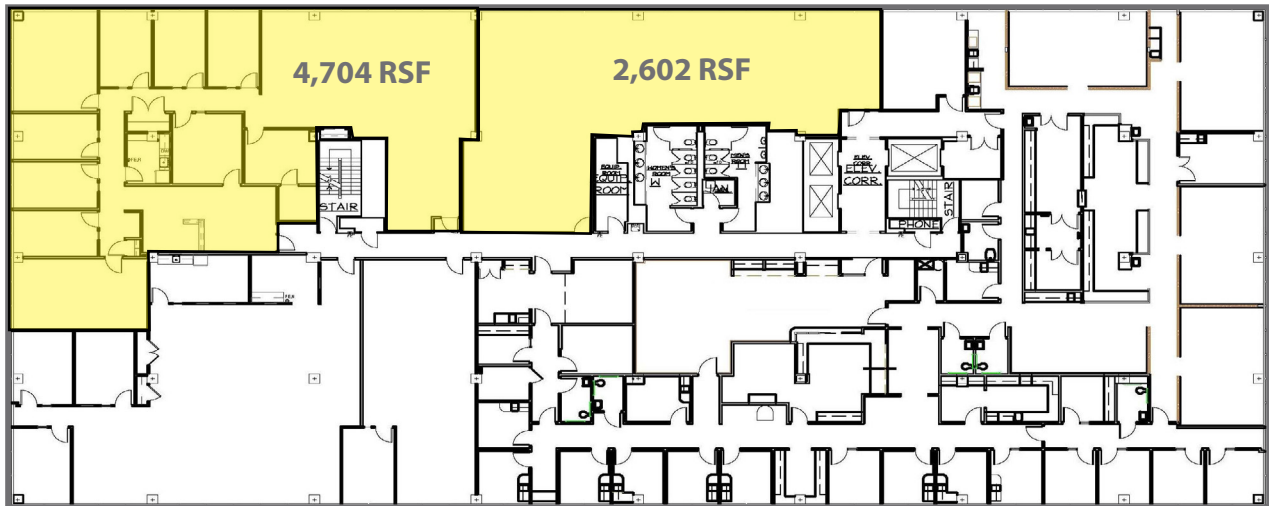
Property **Highlights**

- High end finishes throughout
- Class "A" office building - New lobby and recent elevator modification
- Excellent access and visibility, just steps from the South Hills Village and Village Square in the heart of the South Hills marketplace
- 24-hour security
- Exterior signage opportunity

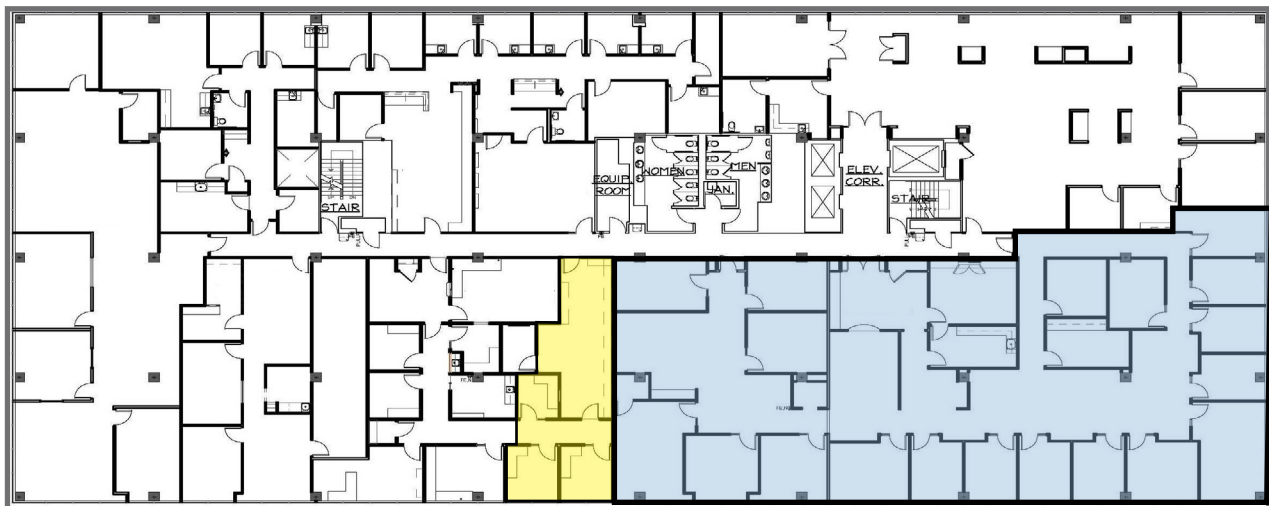
4th Floor



5th Floor



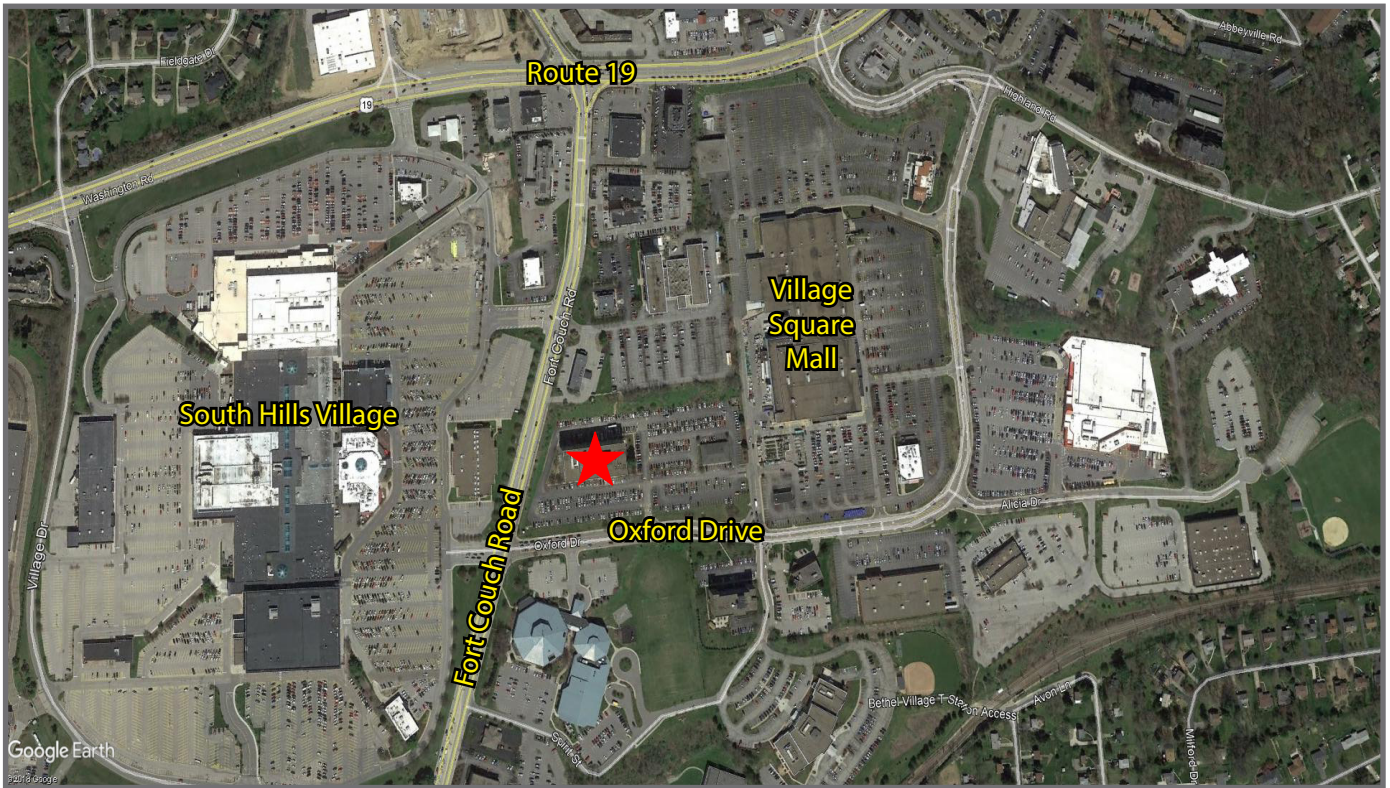
6th Floor



877 RSF

7,183 RSF - Available 4/2021

Although all information furnished regarding property for sale, rental or financing is from sources deemed reliable, such information has not been verified, and no express representation is made nor is any to be implied as to the accuracy thereof, and it is submitted subject to errors, omissions, change of price, rental or other conditions, prior sale, lease or financing, or withdrawal without notice. Rental terms and all dimensions are approximate and specifications are subject to change without notice. Oxford Realty Services, Inc., an independent real estate services company.



For more information please contact:

Spencer L. Baker
Associate

Oxford Realty Services, Inc.
412.261.0200, ext 3460
sbaker@oxfordrealtyservices.com

Taylor N. Iaboni
Associate

Oxford Realty Services, Inc.
412.261.0200, ext 3493
tiaboni@oxfordrealtyservices.com

OXFORD

REALTY SERVICES, INC.

2545 Railroad Street - Suite 300
Pittsburgh, PA 15222
www.oxfordrealtyservices.com

Although all information furnished regarding property for sale, rental or financing is from sources deemed reliable, such information has not been verified, and no express representation is made nor is any to be implied as to the accuracy thereof, and it is submitted subject to errors, omissions, change of price, rental or other conditions, prior sale, lease or financing, or withdrawal without notice. Rental terms and all dimensions are approximate and specifications are subject to change without notice. Oxford Realty Services, Inc., an independent real estate services company.