

Retail Space Available For Lease

490 Washington Street

Stoughton, MA



Property Information

Address:	490 Washington Street Stoughton, MA	Water:	Municipal
Available Space:	1,080 +/- SF	Sewer:	Municipal
Total SF:	11,196 +/- SF	Gas:	Municipal
Land Area:	0.68 +/- acres	Zoning:	General Business
Traffic Counts:	17,440 +/- VPD Via Washington Street	Year Built:	1964
Frontage:	150'		

Trade Area Demographics

	3 Mile	5 Miles	10 Miles
Population:	49,879	153,003	643,026
Households:	19,389	56,539	244,472
Average HH Income:	\$110,228	\$105,275	\$110,362



490 Washington Street is a 11,196 +/- SF retail strip center positioned along the heavily traveled Route 138 corridor in Stoughton, Massachusetts. Located less than 20 miles from downtown Boston, this strip center is positioned in a densely-populated community with nearly 153,003 people, producing an average household income of \$105,275, living within a five-mile radius. This property features a 1,080 +/- sf retail availability and co-tenants include Sherwin Williams, Anton's Cleaners and Mr. Chef's Restaurant. Neighboring national retailers include Stop & Shop, Price Rite, Advanced Auto, Family Dollar, CVS, and Walgreens, with many other national and local retailers in the immediate vicinity. 490 Washington Street benefits from great visibility and access from the heavily traveled Washington Street, pylon signage and on-site parking.

For Leasing Information:

Chris McMahon
781.862.9700 x 225
cjm@sumrp.com

Travis Ginsberg
781.862.9700 x 226
tg@sumrp.com

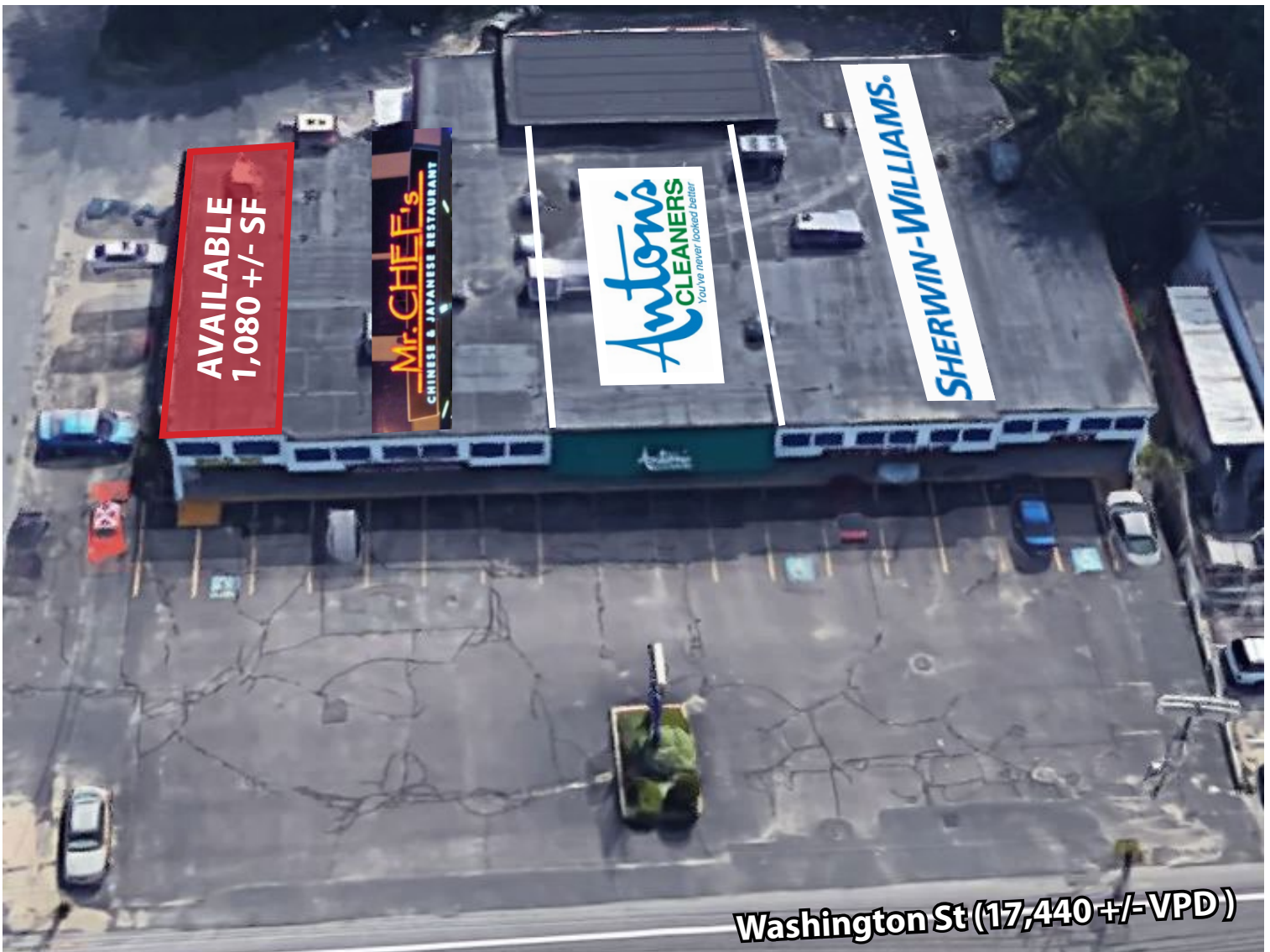
Summit Realty Partners

Summit Realty Partners
80 Hayden Avenue
Lexington, MA 02421
www.summitrealtypartners.com

Retail Space Available For Lease

490 Washington Street

Stoughton, MA



Summit Realty Partners

Summit Realty Partners
80 Hayden Avenue
Lexington, MA 02421
www.summitrealtypartners.com