

The Plaza at 505

Building Top Signage Available



505 Lomas Santa Fe Drive, Solana Beach, CA 92075



**CUSHMAN &
WAKEFIELD**

For leasing information, please contact:

Joe Anderson
+1 760 431 4209
joe.anderson@cushwake.com
LIC #01280854

Brooks Campbell
+1 760 431 4215
brooks.campbell@cushwake.com
LIC #01380901

12830 El Camino Real, Suite 100 San Diego, CA 92130 P +1 760 431 4200 F +1 760 454 3869 cushmanwakefield.com

Information contained herein has been obtained from sources we deem reliable. We have no reason to doubt its accuracy, but we do not guarantee it.



The Plaza at 505 Lomas Santa Fe is the most sophisticated Class A ocean view property in the North County office market.

With a prime location readily accessible to I-5 and the ocean, The Plaza at 505 Lomas Santa Fe is easily among the finest coastal office buildings. From its distinctive entries to its dramatic courtyard, The Plaza at 505 Lomas Santa Fe is an unmistakable statement of quality.

The Plaza at 505 Lomas Santa Fe is designed to create a superior business atmosphere. Accented in travertine stone, the exterior conveys elegance, substance, and permanence. Echoing the same quality and tones, tenants will enjoy the stone-clad courtyard, lush landscaping, and upscale restrooms. The professional atmosphere will inspire and motivate.

For leasing information, please contact:

Joe Anderson
+1 760 431 4209
joe.anderson@cushwake.com
LIC #01280854

Brooks Campbell
+1 760 431 4215
brooks.campbell@cushwake.com
LIC #01380901



Availability

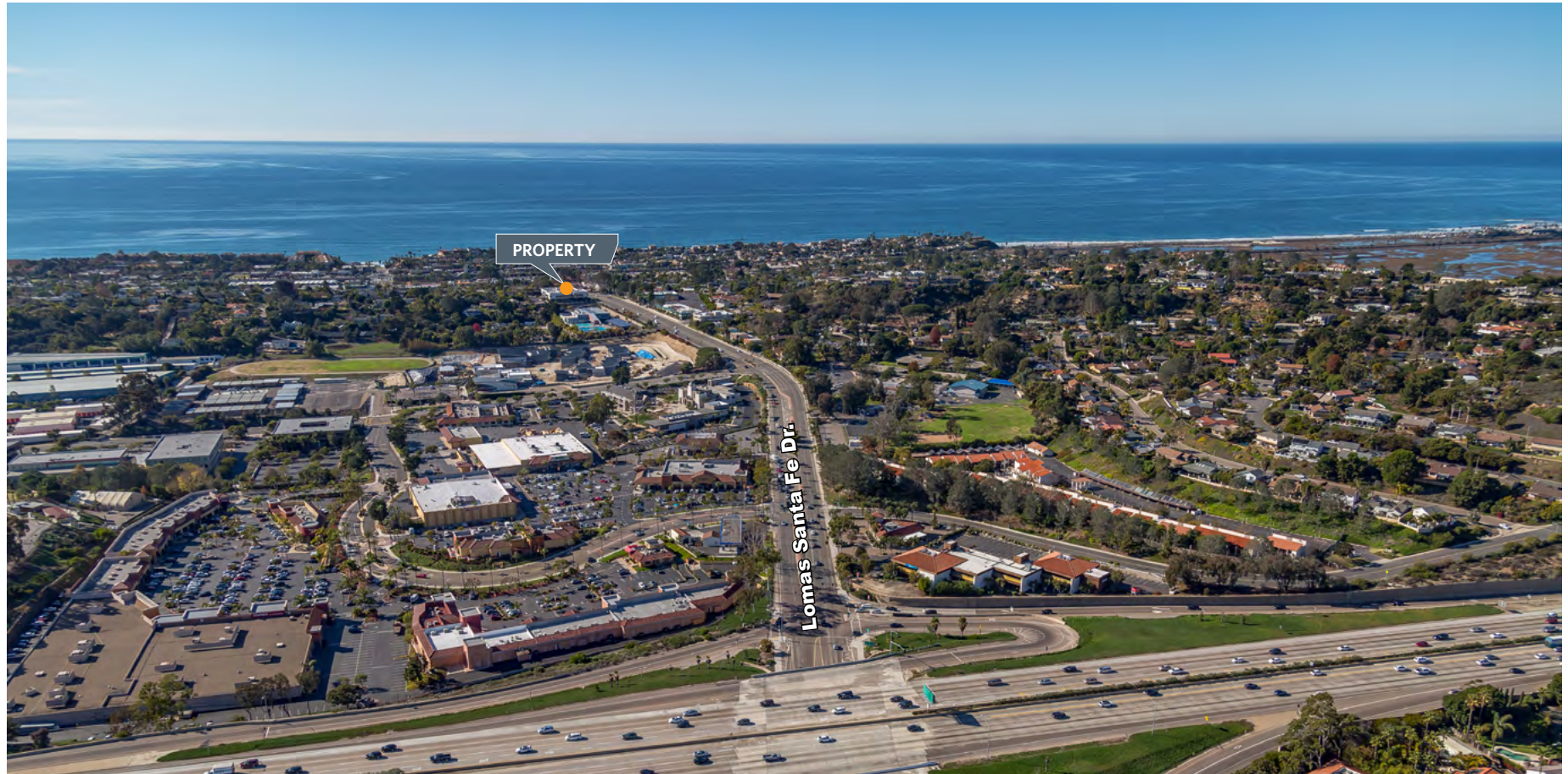
Building Size:	22,736 rsf
Parking:	3.16/1,000 rsf
Lease Term:	5-7 years
Operating Expenses:	Base Year method

Features

- Large private executive offices
- Quick walk to Fletcher Cove Park, Pill Box Beach, Cedros Shopping District, Solana Beach Coaster Station and many local eateries & amenities
- Less than 0.5 miles from the I-5
- Lush courtyard and gathering area
- Upscale restrooms



Location



SOLANA BEACH - an inspiring workplace environment

Solana Beach has emerged in recent years as one of the “places to be” for executives who want upscale offices in an environment with flair. Near to businesses, incredible amenities (ocean, golf, shopping, dining, etc.) and some of the County’s most upscale residential areas, a Solana Beach business location has it all.

This seaside community is situated along the coast of North San Diego County, and is approximately a 30 minute drive from downtown San Diego. Sun, surf, and sand are the essence of Solana Beach, providing a truly inspiring workplace environment. There is no better place to work, live and play.

Over 13,000 residents call this four square mile beach community their home. The Pacific Ocean is to the west; Rancho Santa Fe is to the east; the City of Encinitas to the north and the City of Del Mar to the south.

The Plaza at 505

505 Lomas Santa Fe Drive, Solana Beach, CA 92075

Availability

First Floor

Suite	Total RSF	Availability	Lease Rate
110	2,555	Immediately	\$4.75/RSF + Utilities
150	2,075	Immediately	\$4.75/RSF + Utilities
210	2,228	Immediately	\$4.75/RSF + Utilities

For leasing information, please contact:

Joe Anderson

+1 760 431 4209

joe.anderson@cushwake.com

LIC #01280854

Brooks Campbell

+1 760 431 4215

brooks.campbell@cushwake.com

LIC #01380901



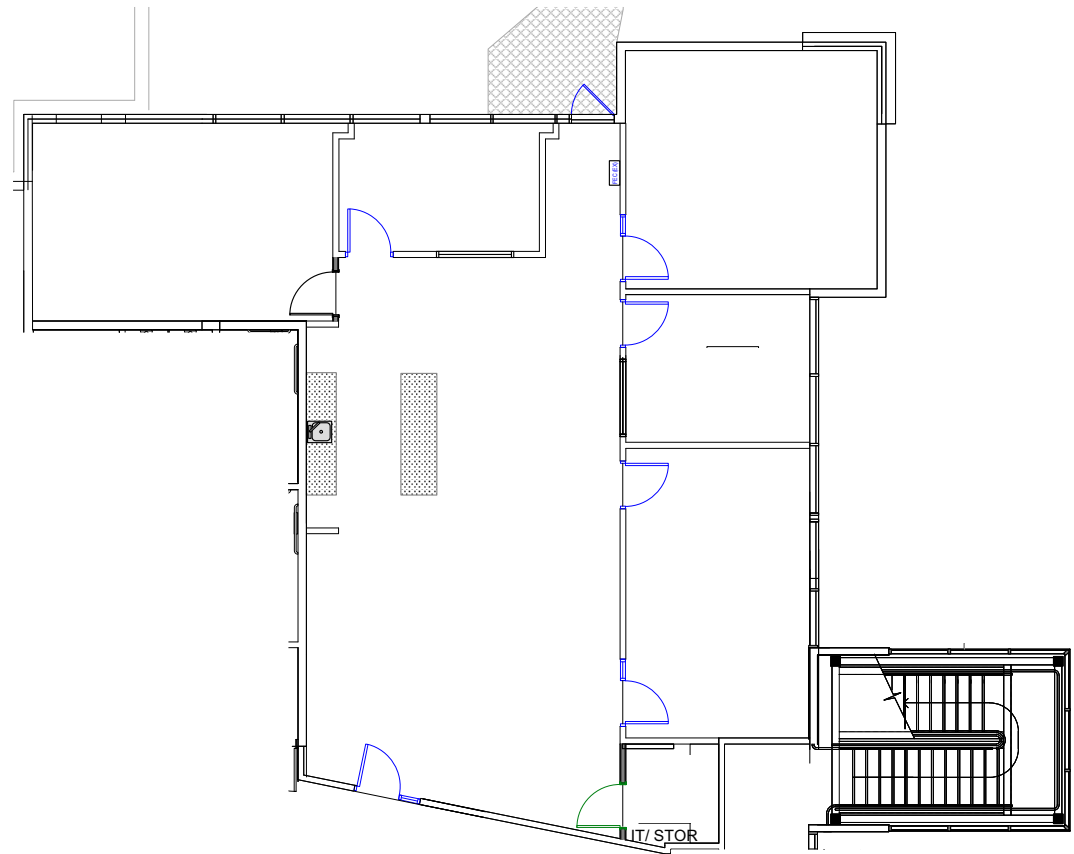
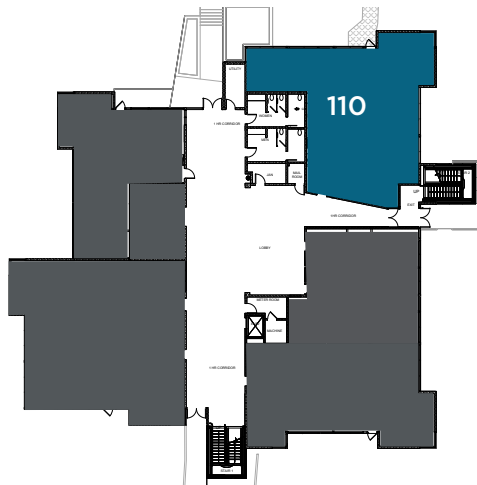
The Plaza at 505

505 Lomas Santa Fe Drive, Solana Beach, CA 92075

Suite 110
2,555 SF

\$4.75/RSF + Utilities

- Modern design
- High end improvements
- Luxury vinyl tile
- Additional separate entry from parking lot



For leasing information, please contact:

Joe Anderson

+1 760 431 4209

joe.anderson@cushwake.com

LIC #01280854

Brooks Campbell

+1 760 431 4215

brooks.campbell@cushwake.com

LIC #01380901



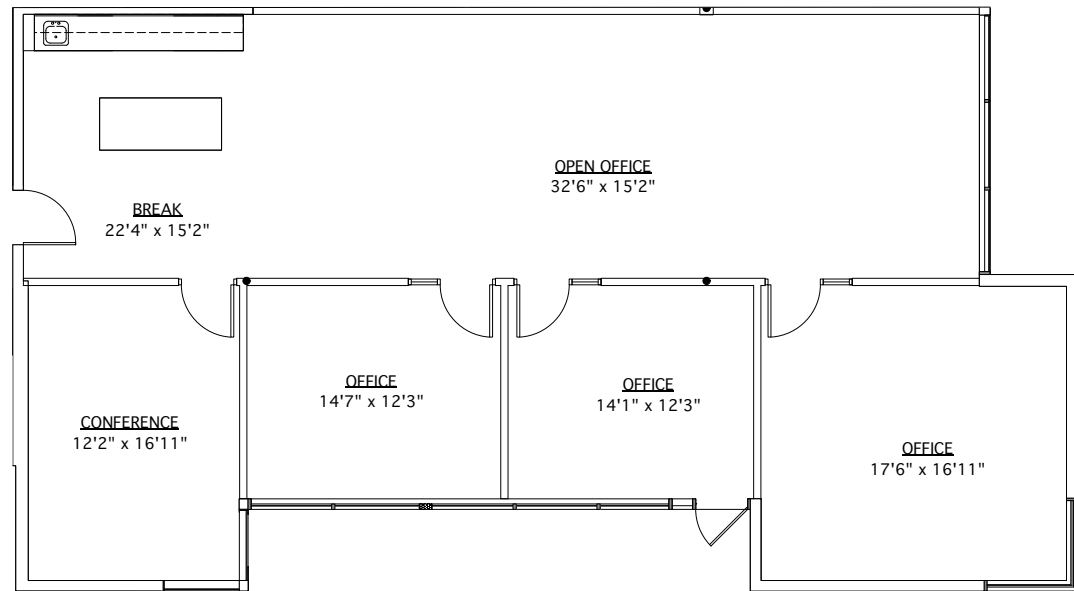
The Plaza at 505

505 Lomas Santa Fe Drive, Solana Beach, CA 92075

Suite 150
2,075 SF

\$4.75/RSF + Utilities

- Modern design
- High end improvements
- Luxury vinyl tile
- Additional separate entry from parking lot



For leasing information, please contact:

Joe Anderson

+1 760 431 4209

joe.anderson@cushwake.com

LIC #01280854

Brooks Campbell

+1 760 431 4215

brooks.campbell@cushwake.com

LIC #01380901



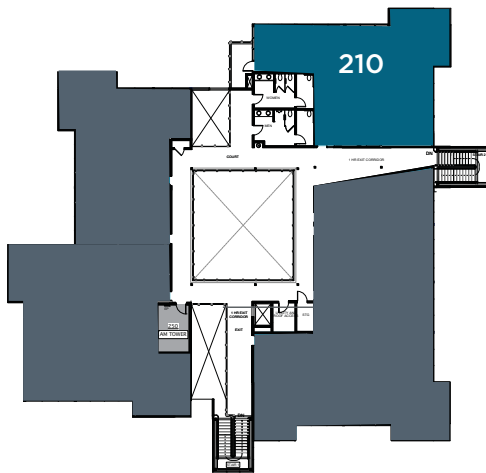
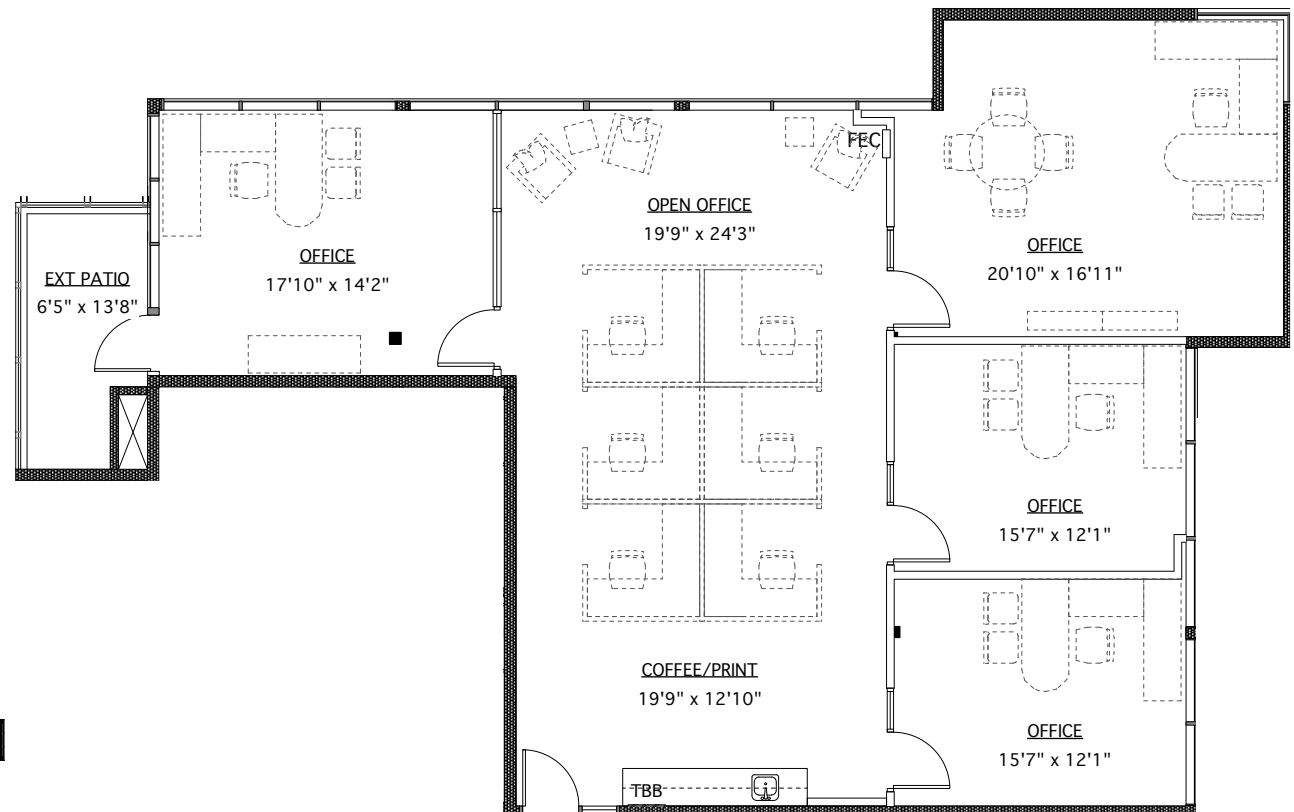
The Plaza at 505

505 Lomas Santa Fe Drive, Solana Beach, CA 92075

Suite 210 2,228 SF

\$4.75/RSF + Utilities

- Private exterior patio
- Modern design
- High end improvements
- Luxury vinyl tile



For leasing information, please contact:

Joe Anderson
+1 760 431 4209
joe.anderson@cushwake.com
LIC #01280854

Brooks Campbell
+1 760 431 4215
brooks.campbell@cushwake.com
LIC #01380901



The Plaza at 505



505 Lomas Santa Fe Drive, Solana Beach, CA 92075



**CUSHMAN &
WAKEFIELD**

For leasing information, please contact:

Joe Anderson

+1 760 431 4209

joe.anderson@cushwake.com

LIC #01280854

Brooks Campbell

+1 760 431 4215

brooks.campbell@cushwake.com

LIC #01380901

12830 El Camino Real, Suite 100 San Diego, CA 92130 P +1 760 431 4200 F +1 760 454 3869 cushmanwakefield.com

Information contained herein has been obtained from sources we deem reliable. We have no reason to doubt its accuracy, but we do not guarantee it.