

Office Lease

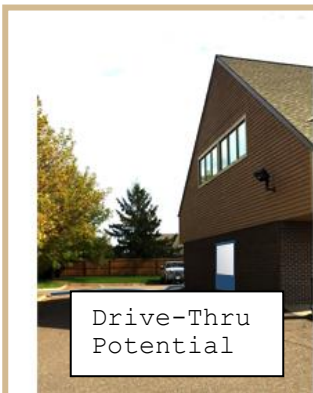
Greeley Square Building
1903 Greeley Street South, Stillwater MN 55082



PROPERTY DETAILS

- Approximately 10,000 SF Building
- Term length negotiable
- Available suites:
 - Suite 100 (2,052 SF)
 - \$17/SF MG + utilities for 1st floor suite
 - Suite 201 (631 SF) \$790/Month
 - Suite 202 (1,101 SF) \$1,375/Month
 - Suite 206 (1,000 SF) \$1,250/Month
 - Build to Suit
- Potential uses:
 - Replace your home office
 - Medical
 - Professional office
- Great access to Hwy 36 and Hwy 694
- Signage available
- Recently updated and remodeled

ADDITIONAL PHOTOS



Mark Young
Vice President, Sales and Leasing
Direct | 651-233-2435
Mobile | 651-307-2371

John Higgins
Vice President, Sales and Leasing
Direct | 651-209-0520
Mobile | 612-702-3104

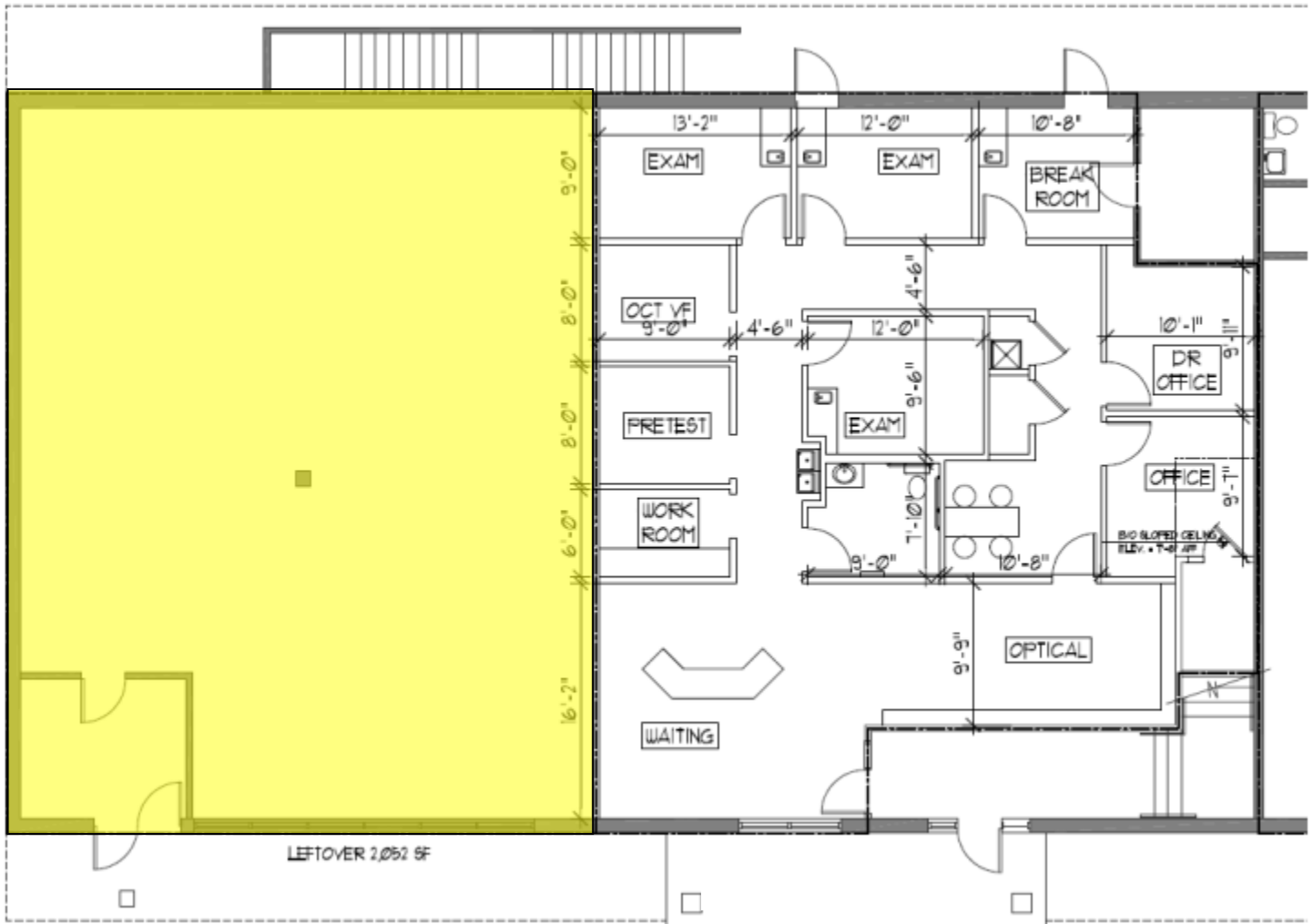
7300 Hudson Blvd., Suite 210
Oakdale, MN 55128
Main | 651-731-0708
Fax | 651-735-1228
www.crossroadsproperties.net

CROSSROADS
PROPERTIES

Office Lease

Greeley Square Building
1903 Greeley Street South, Stillwater MN 55082

FIRST FLOOR



Mark Young
Vice President, Sales and Leasing
Direct | 651-233-2435
Mobile | 651-307-2371

John Higgins
Vice President, Sales and Leasing
Direct | 651-209-0520
Mobile | 612-702-3104

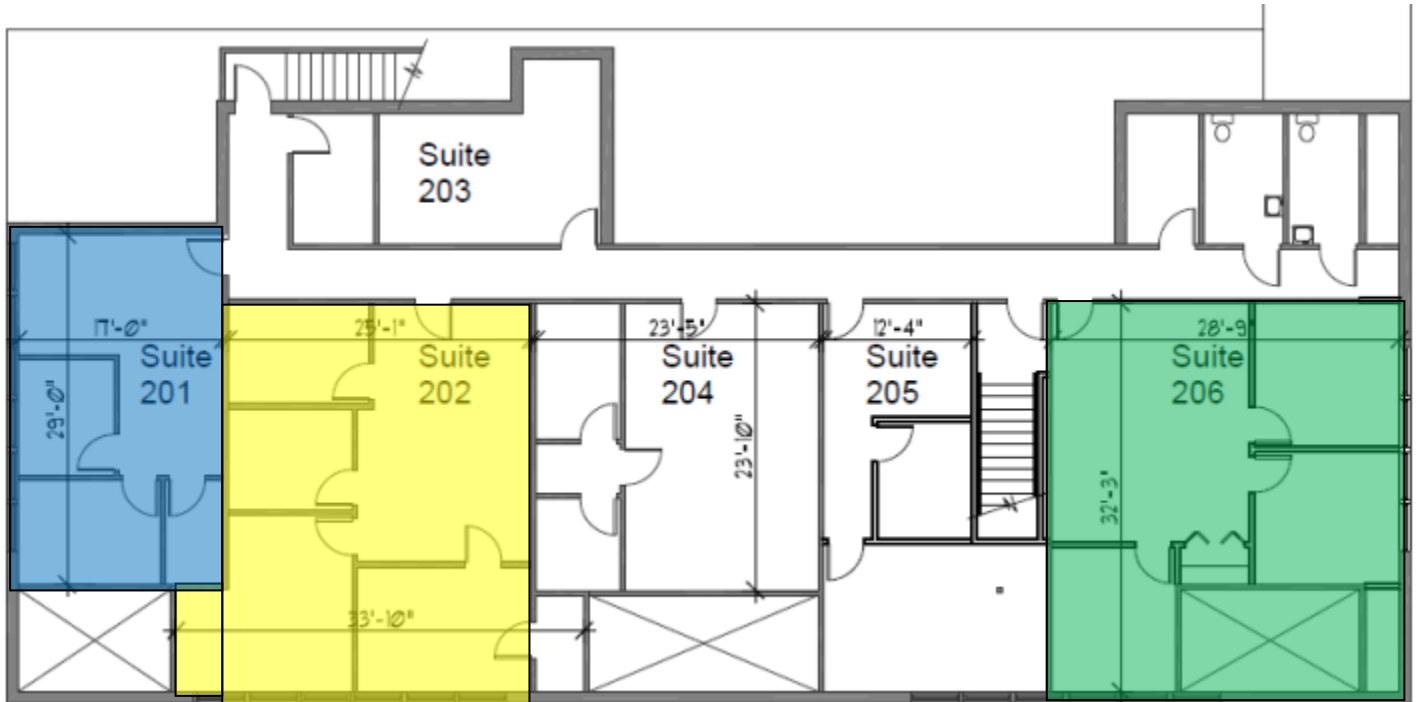
7300 Hudson Blvd., Suite 210
Oakdale, MN 55128
Main | 651-731-0708
Fax | 651-735-1228
www.crossroadsproperties.net

CROSSROADS
PROPERTIES

Office Lease

Greeley Square Building
1903 Greeley Street South, Stillwater MN 55082

SECOND FLOOR



Mark Young
Vice President, Sales and Leasing
Direct | 651-233-2435
Mobile | 651-307-2371

John Higgins
Vice President, Sales and Leasing
Direct | 651-209-0520
Mobile | 612-702-3104

7300 Hudson Blvd., Suite 210
Oakdale, MN 55128
Main | 651-731-0708
Fax | 651-735-1228
www.crossroadsproperties.net

CROSSROADS
PROPERTIES