

OFFICE SPACES AVAILABLE FOR LEASE AT THE ATRIUM

5776 STONERIDGE MALL ROAD, PLEASANTON

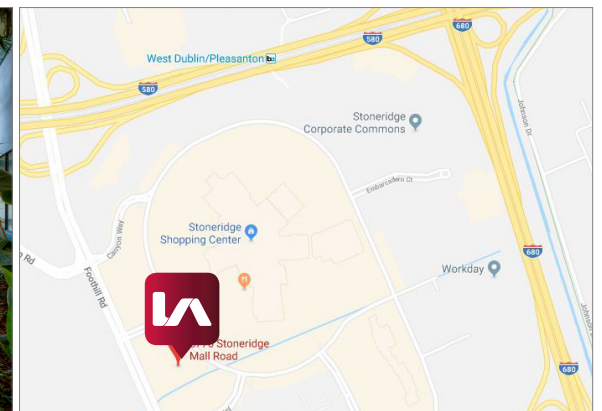
LISTING DATA

AVAILABLE SUITES:

- Suite 360: 1,932±SF
- Suite 250: 2,175±SF

PROPERTY INFORMATION:

- Medical uses possible
- Easy access to I-580/I-680 and BART
- Excellent parking - 4/1000
- Comcast fiber & T1 to building
- Free common conference room
- On-site video surveillance
- Walking distance to the Stoneridge Mall Shopping Center - plenty of amenities



CALL BROKERS FOR PRICING & TOURING INFORMATION

Simon Vogt
svogt@lee-associates.com
D 925.737.4157

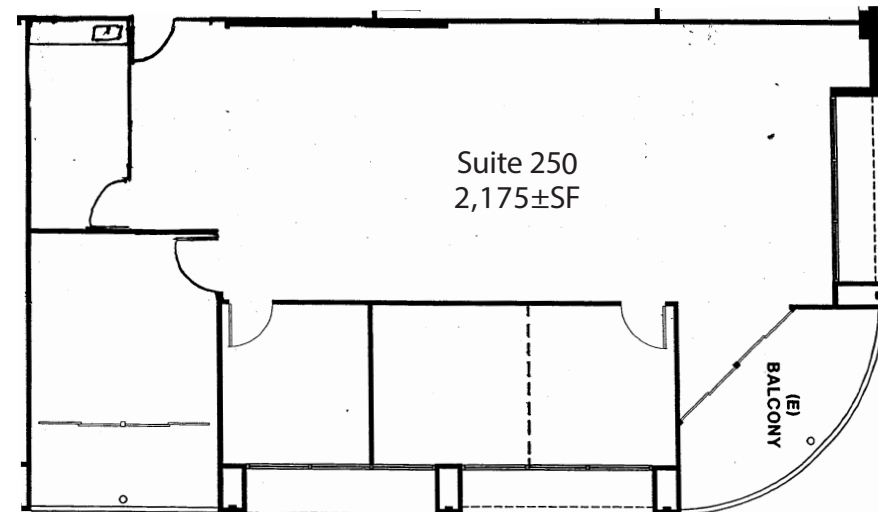
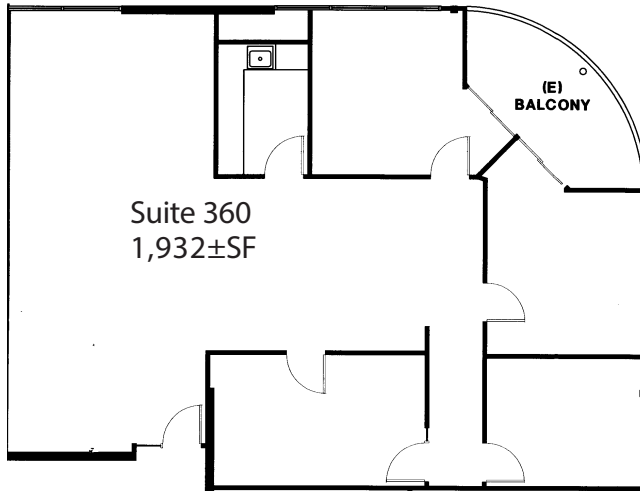
Tyler Gare
tgare@lee-associates.com
D 925.737.4158

All information furnished regarding property for sale, rental or financing is from sources deemed reliable, but no warranty or representation is made to the accuracy thereof and same is submitted to errors, omissions, change of price, rental or other conditions prior to sale, lease or financing or withdrawal without notice. No liability of any kind is to be imposed on the broker herein.

OFFICE SPACES AVAILABLE FOR LEASE AT THE ATRIUM

5776 STONERIDGE MALL ROAD, PLEASANTON

FLOOR PLANS



Floor plans not to scale