

# SODO Park

3200 - 3220 1st Avenue South | Seattle, WA

1,800 SF OFFICE FOR LEASE



SODO PARK

3200

Available Space



THE ANDOVER  
COMPANY, INC.

CORFAC INTERNATIONAL

JACK CRANE  
(206) 446-6699  
jacklc@andoverco.com

JEFF CRANE  
(206) 336-5336  
jcrane@andoverco.com





## PROPERTY HIGHLIGHTS



1,800 SF UNIQUE 2ND FLOOR OFFICE SPACE WITH PRIVATE BALCONY



AVAILABLE APRIL 1ST, 2024 OR POSSIBLY SOONER



GREAT SODO LOCATION WITH QUICK ACCESS TO I-5 & I-90



2 OPEN WORK AREAS, KITCHENETTE, STORAGE CLOSET, PRIVATE RESTROOM, AND CONFERENCE ROOM



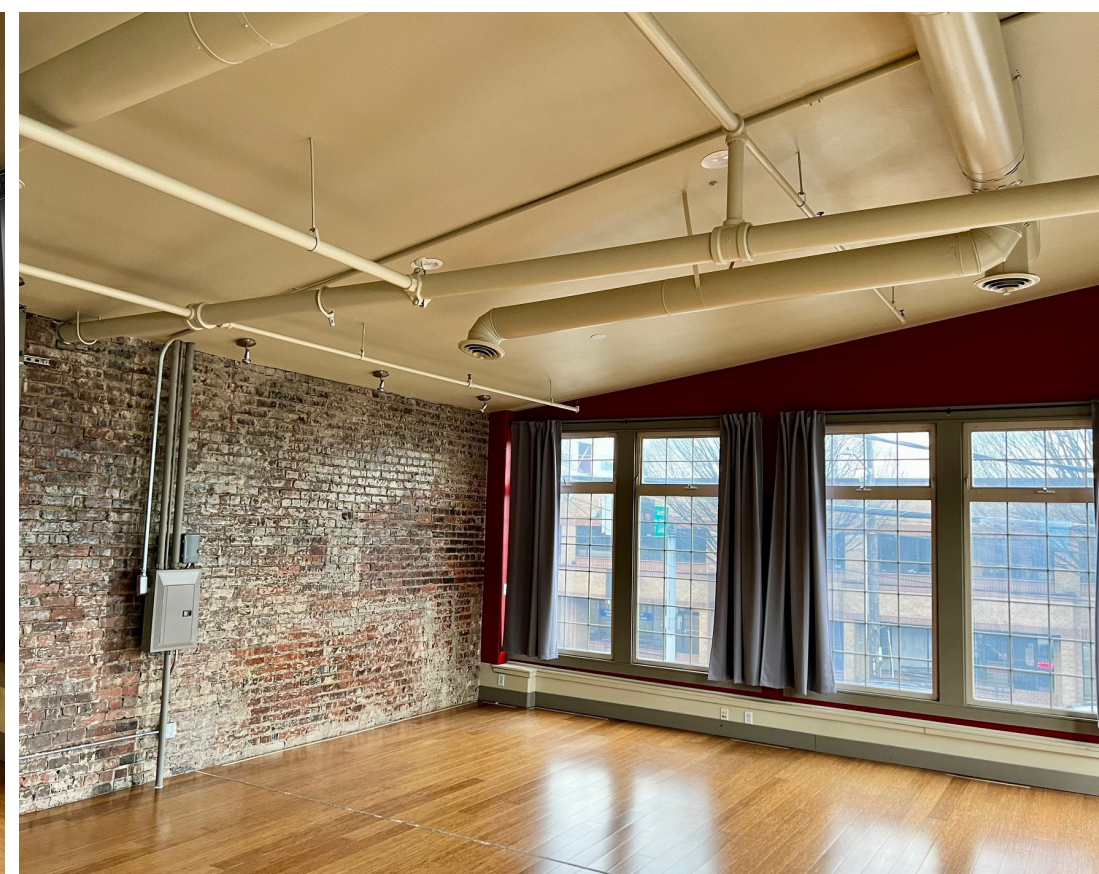
WITHIN MINUTES TO NEARBY BUSINESSES, BANKING, RESTAURANTS, AND OTHER RETAIL SERVICES



CALL BROKERS FOR RATES

The information contained herein has been obtained from reliable sources, but is not guaranteed. A prospective buyer/tenant should verify each item relating to this property and all information contained herein.









# SODO Park

3200 - 3220 1st Avenue South | Seattle, WA

## DRIVE TIMES

**DOWNTOWN SEATTLE**      **2.5 MILES**

**SEATAC AIRPORT**      **11.5 MILES**



SODO PARK

3200

# SODO Park

3200 - 3220 1st Avenue South | Seattle, WA

**JACK CRANE**

(206) 446-6699

[jacklc@andoverco.com](mailto:jacklc@andoverco.com)

**JEFF CRANE**

(206) 336-5336

[jcrane@andoverco.com](mailto:jcrane@andoverco.com)

