

2727 FAIRVIEW

2727 FAIRVIEW AVENUE | ROSEVILLE, MN



FOR LEASE



AVAILABLE SPACE:

24,530 SF

Divisible to 10,000 SF

LEASE RATE:

\$18.00 PSF GROSS

+ UTILITIES

TERM:

FLEXIBLE

PROPERTY HIGHLIGHTS

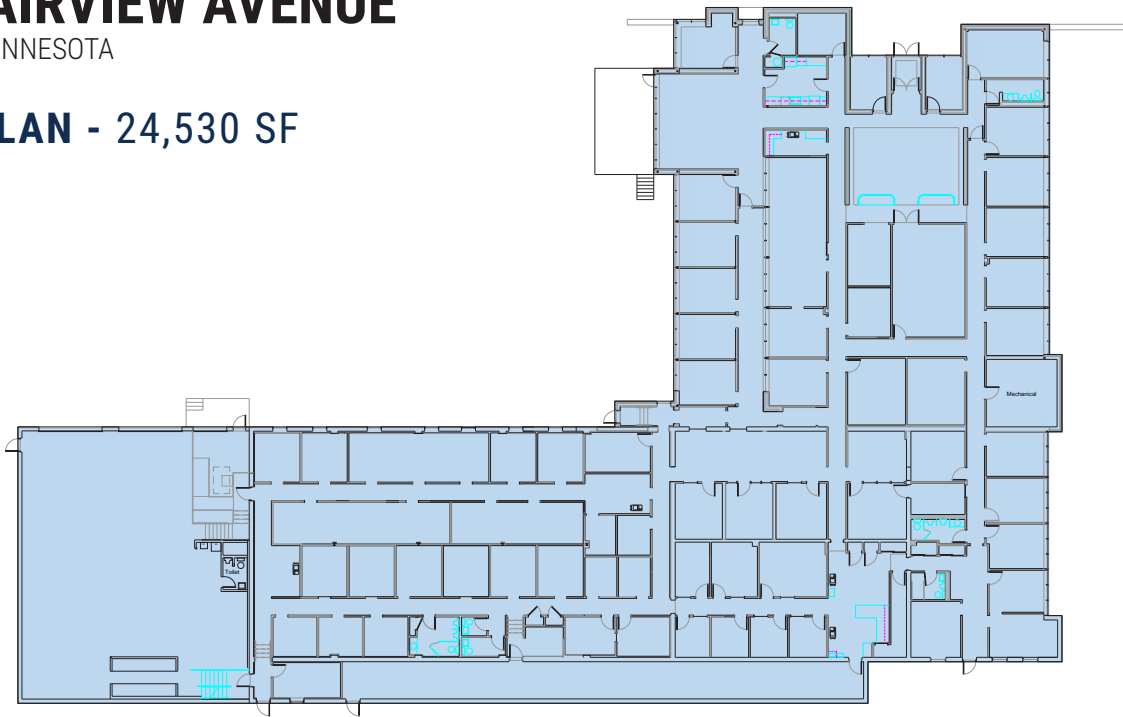
- Cost effective move-in ready space
- Highly flexible lease terms
- Easy access to 35W & Snelling Avenue
- Close proximity to Rosedale Center and Rosedale Commons Shopping Center
- Ample parking



2727 FAIRVIEW AVENUE

ROSEVILLE, MINNESOTA

FLOOR PLAN - 24,530 SF



STEVE SHEPHERD SIOR
Managing Director

T +1 612 430 9973
steve.shepherd@ngkf.com

JAY CHMIELESKI
Managing Director

T +1 612 430 9982
jay.chmielecki@ngkf.com

www.ngkf.com

The information contained herein has been obtained from sources deemed reliable but has not been verified and no guarantee, warranty or representation, either express or implied, is made with respect to such information. Terms of sale or lease and availability are subject to change or withdrawal without notice.

