

CENTER

2620-2645 FINANCIAL COURT
SAN DIEGO, CALIFORNIA 92117

 CUSHMAN &
WAKEFIELD

LEASING BY:

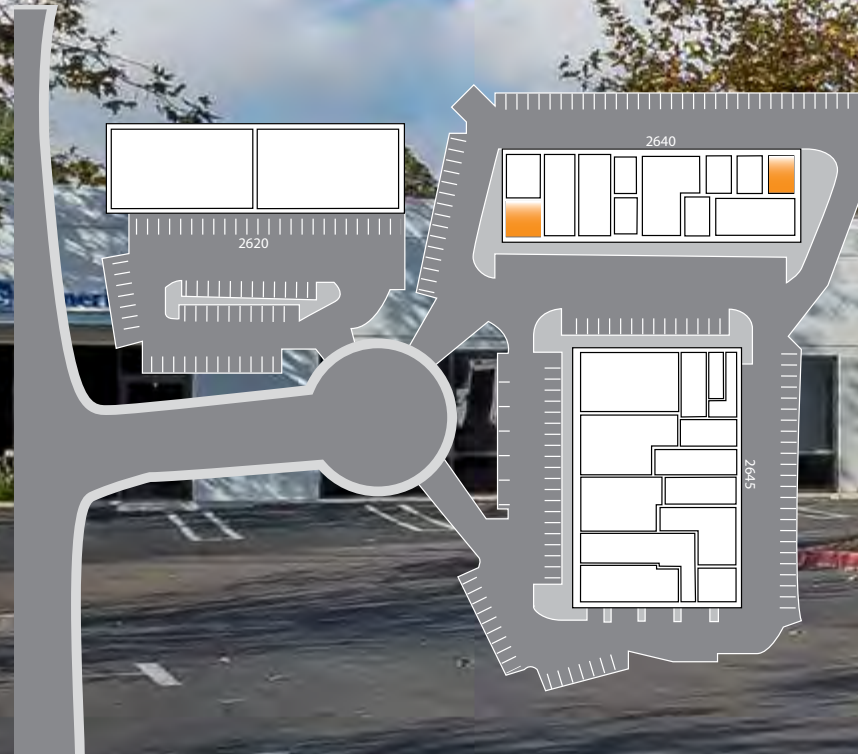
OWNED & OPERATED BY:

 **STOS**
PARTNERS

PROPERTY FEATURES

- » A three-building multi-tenant project of approximately 62,636 square feet
- » Excellent showroom, office, and warehouse use
- » Located in the highly desirable, “design district” Rose Canyon submarket
- » Easy access to I-5, HWY 52, HWY 163, and I-8
- » 3.0 / 1,000 SF parking ratio
- » Strong local ownership

SITE PLAN



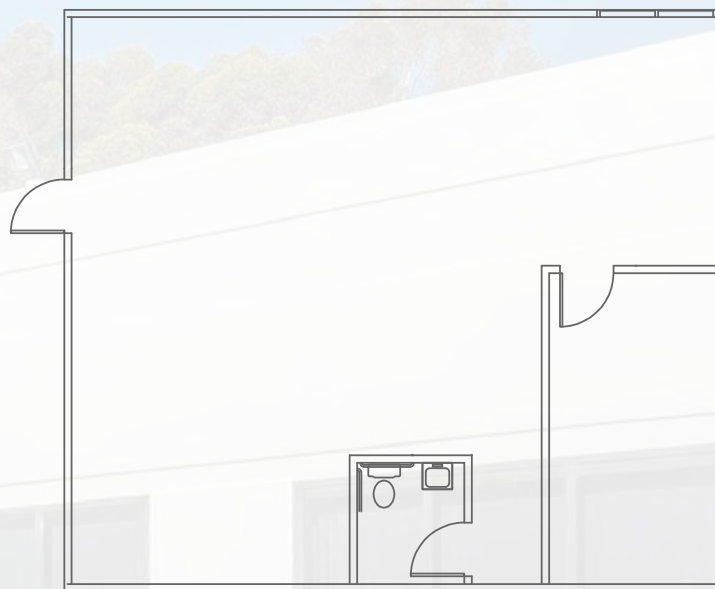
A V A I L A B L E S U I T E

2640 FINANCIAL COURT, SUITE A

1,106 SF | \$1.65 MG

1 private office and open office. Available now.

**Estimated CAM = \$0.23 PSF*



**Floor plan to be verified*

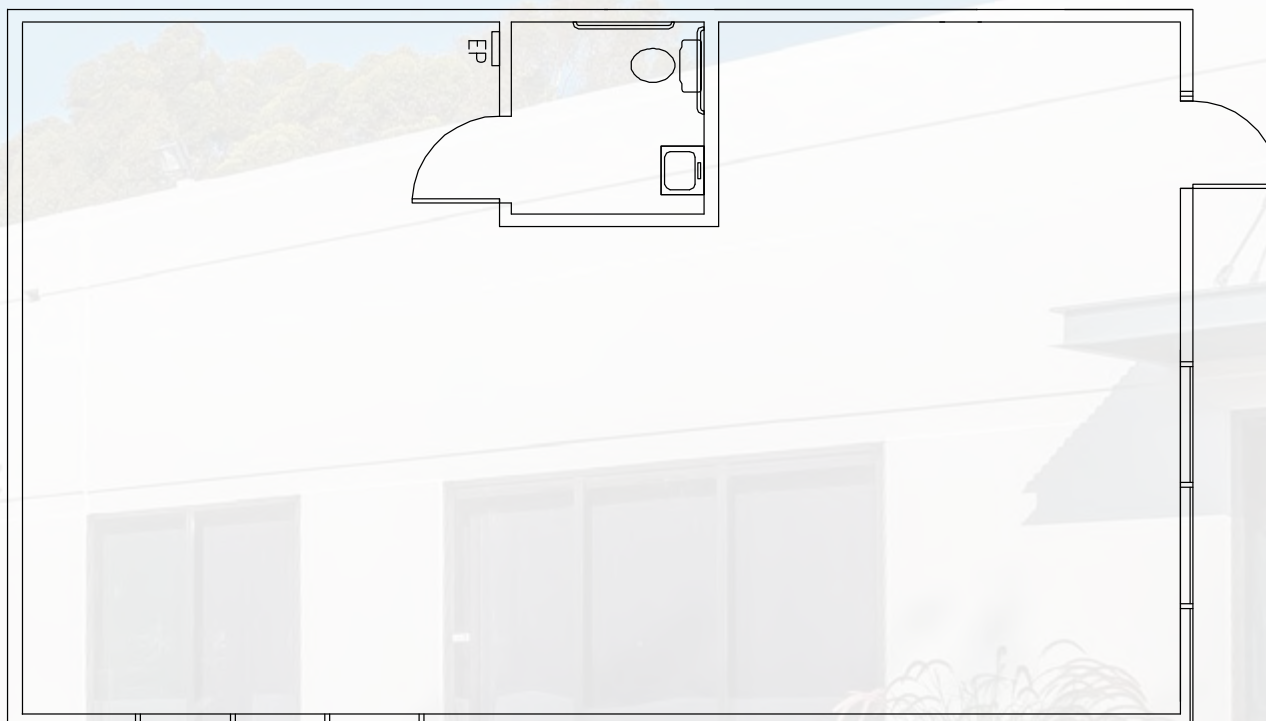
A V A I L A B L E S U I T E

2640 FINANCIAL COURT, SUITE Q

971 SF | \$1.65 MG

Open office and restroom. Available with 30 day notice.

**Estimated CAM = \$0.23 PSF*



**Floor plan to be verified*



SUBJECT

ARIANE DR

FINANCIAL CT

MORENA BLVD

JUTLAND DR

SANTA FE ST







CENTER

2620-2645 FINANCIAL COURT
SAN DIEGO, CALIFORNIA 92117

[VIEW SITE SPECIFIC COVID-19 PREVENTION PLAN](#)



RYAN DOWNING

858.546.5416

ryan.downing@cushwake.com

CA Lic. 01955032

SAMANTHA ALSTON

858.334.4030

samantha.alston@cushwake.com

CA Lic. 02068634

BRANT ABERG, SIOR

858.546.5464

brant.aberg@cushwake.com

CA Lic. 01773573

4747 Executive Drive, 9th Floor, San Diego, CA 92121 | P 858.546.5400 | F 858.630.6320 / www.cushmanwakefield.com

The information contained herein has been given to us by the owner of the property or other sources we deem reliable. We have no reason to doubt its accuracy, but we do not guarantee it. All information should be verified prior to purchase or lease.