

CLASS A OFFICE FOR LEASE

2800 W. MARCH LANE | STOCKTON

 TRANSWESTERN®

Ben Rishwain

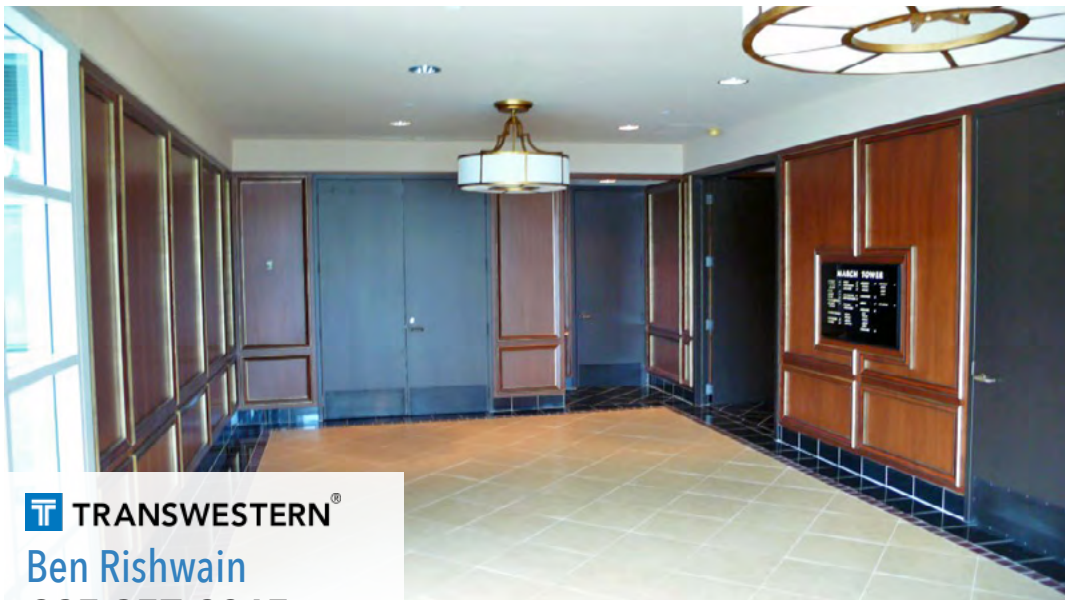
925.357.2015

ben.rishwain@transwestern.com

LIC: 01729449



2800 W MARCH LANE | FOR LEASE



 **TRANSWESTERN**[®]

Ben Rishwain

925.357.2015

ben.rishwain@transwestern.com

UC: 01729449

PROPERTY INFORMATION



60,000 sf office building
Four story Class "A" office
Covered parking spaces Available

AMENITIES



Adjacent to Brookside community



Prominent March Lane presence
Retail, restaurants, banks and hotels in immediate vicinity



Close Interstate 5 access and visibility



On site security
On site management team



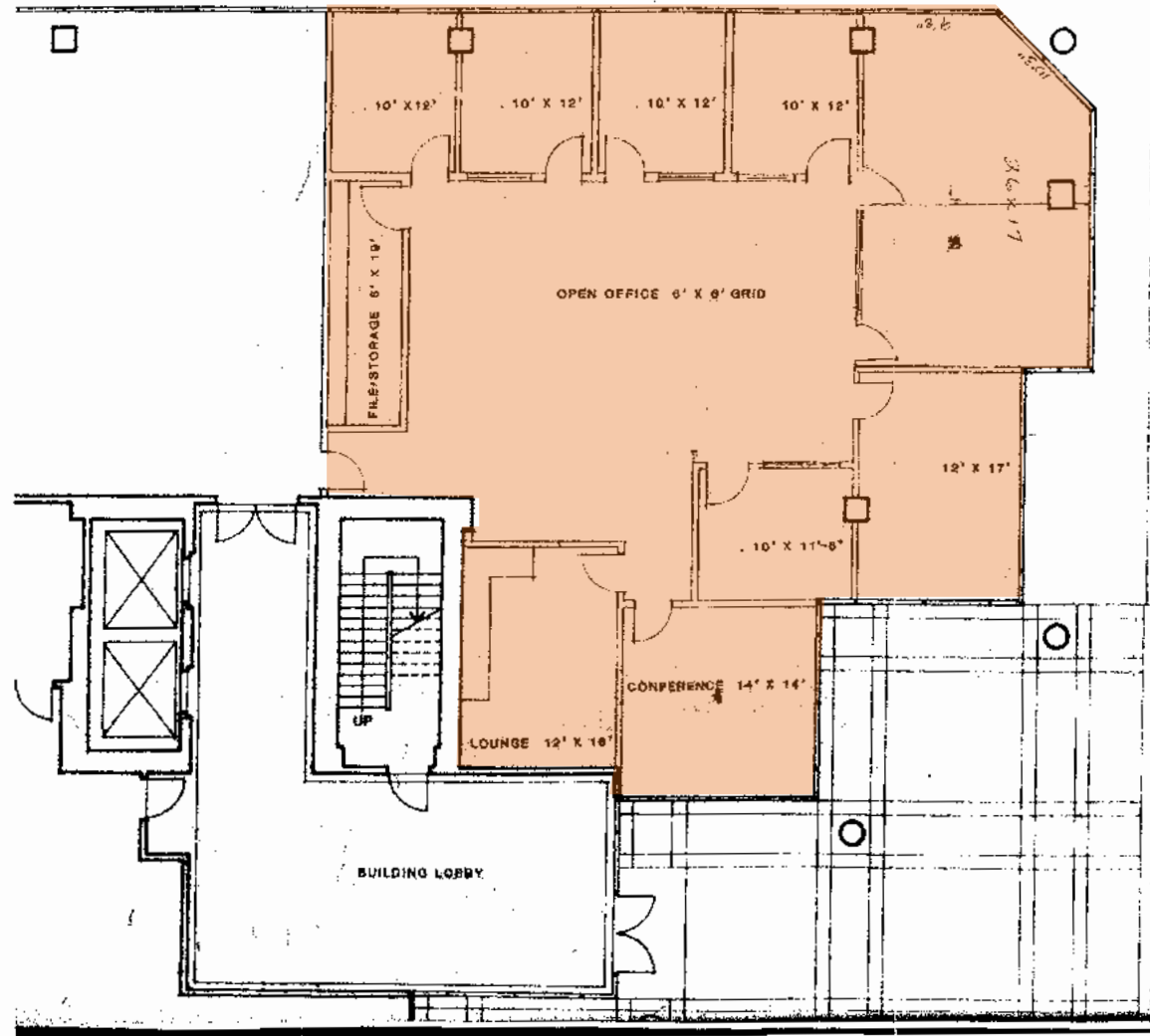
Monument signage available
Two elevators

2800 W MARCH LANE | FOR LEASE

AVAILABLE



Suite 100: ±3,119 SF



 TRANSWESTERN®

Ben Rishwain

925.357.2015

ben.rishwain@transwestern.com

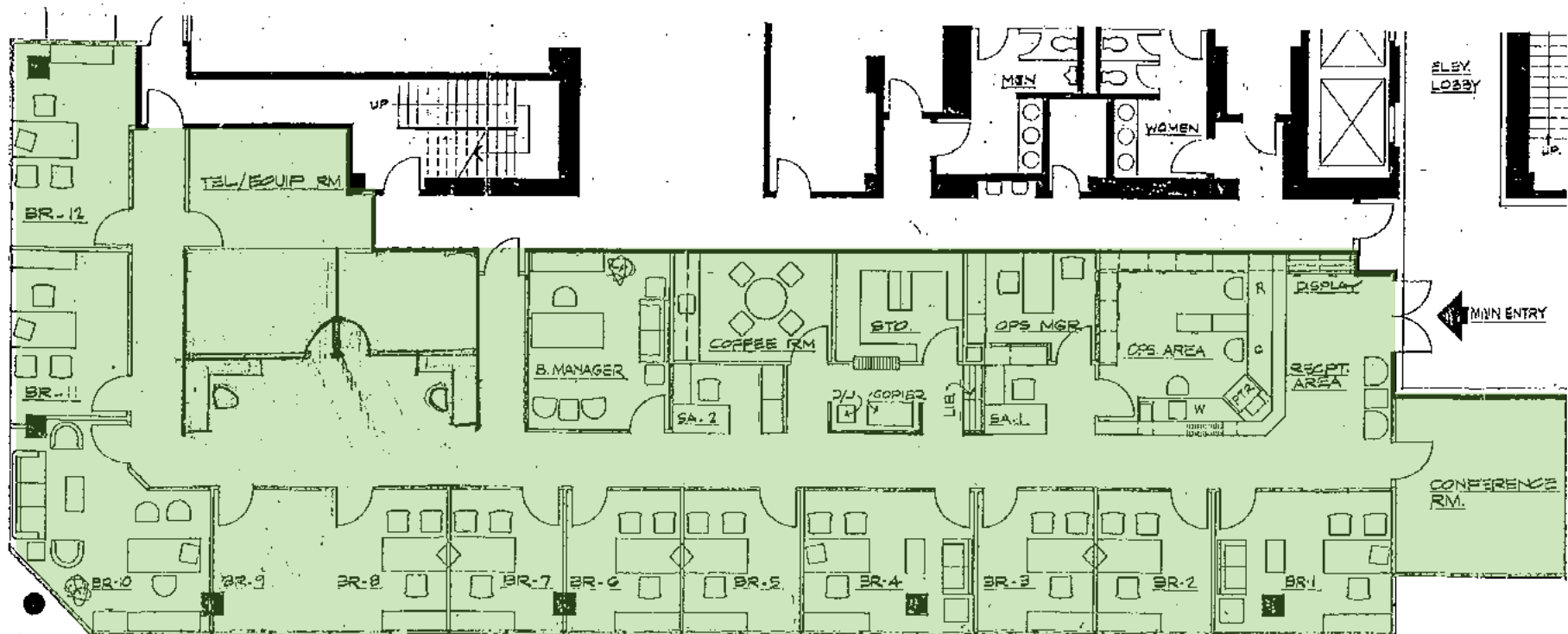
LIC: 01729449

2800 W MARCH LANE | FOR LEASE

AVAILABLE



Suite 110: ±5,031 SF



Ben Rishwain

925.357.2015

ben.rishwain@transwestern.com

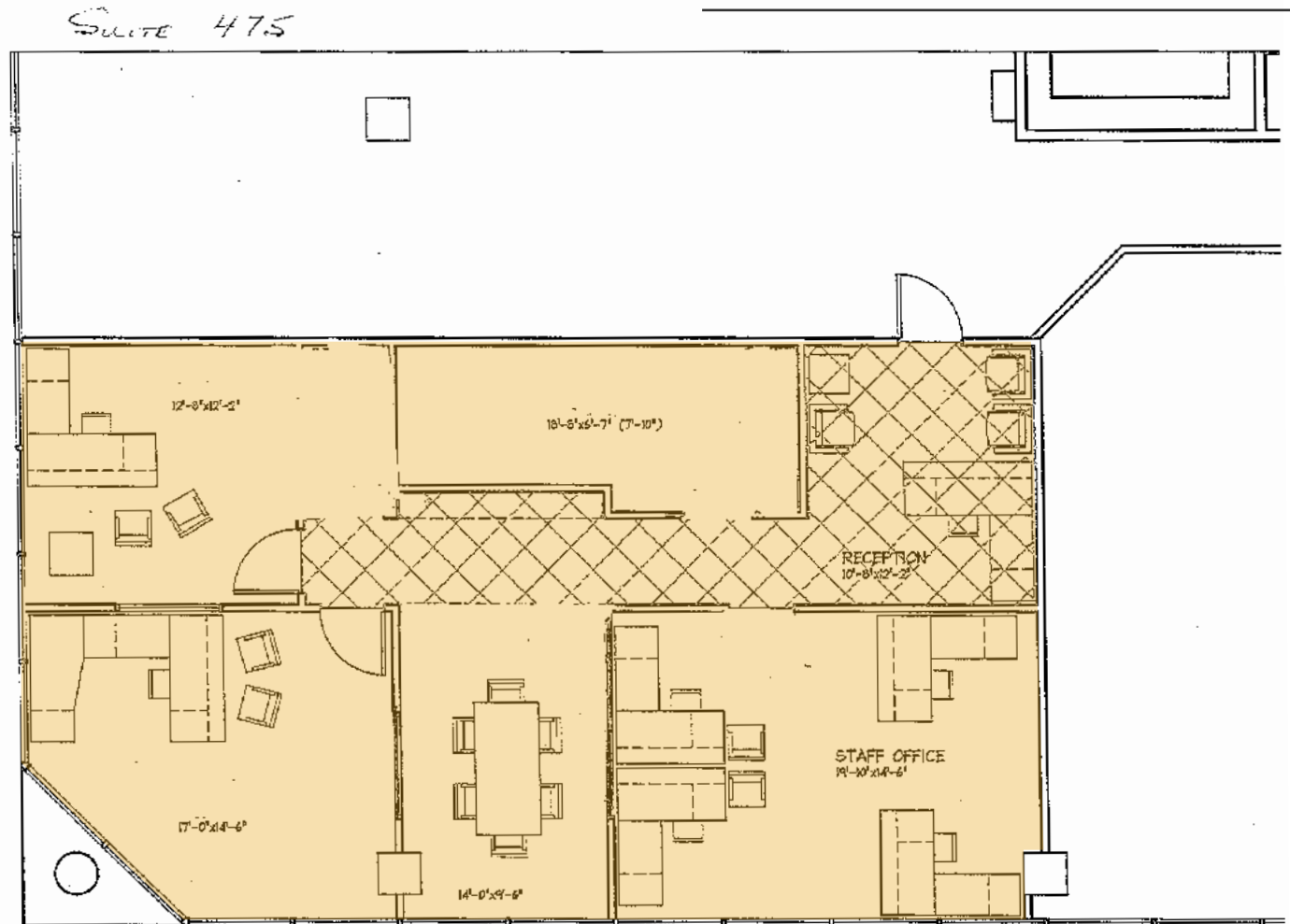
UC: 01729449

2800 W MARCH LANE | FOR LEASE

AVAILABLE



Suite 475: ±1,387 SF



Ben Rishwain

925.357.2015

ben.rishwain@transwestern.com

UC: 01729449