

# FOR LEASE

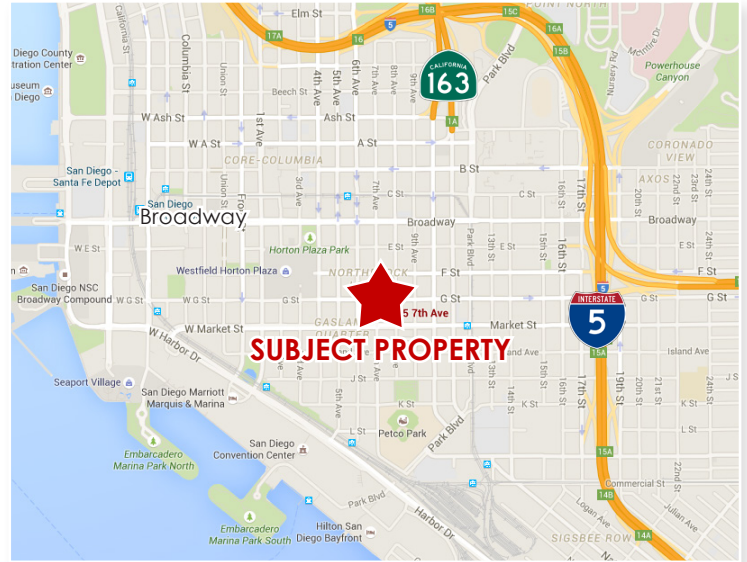
# 635 7th Ave - San Diego, CA 92101



## 1,371 SF Retail Space in Downtown San Diego

### Property Features

- Excellent central downtown location next to highly successful veterinary clinic
- Located across from Park-it-on-Market Garage with 500 spaces, Gaslamp Quarter, Petco Park, the new Downtown Library
- Creative space with skylights and open layout
- High Ceilings
- Prime retail, medical or professional office
- **Asking Rate: \$2.75/SF NNN**



Demographics	1/2 Mile	1 Miles	3 Miles
Ave. HH Income	\$85,032	\$79,110	\$76,933
Population	17,226	43,452	183,206



**Al Apuzzo**  
(760) 448-2442  
aapuzzo@lee-associates.com  
CalBRE #01323215

**Alex Weiss**  
(760) 448-2452  
aweiss@lee-associates.com  
CalBRE #01893865

Lee & Associates Commercial Real Estate Services - 1900 Wright Place Ste 200 - Carlsbad, CA 92008

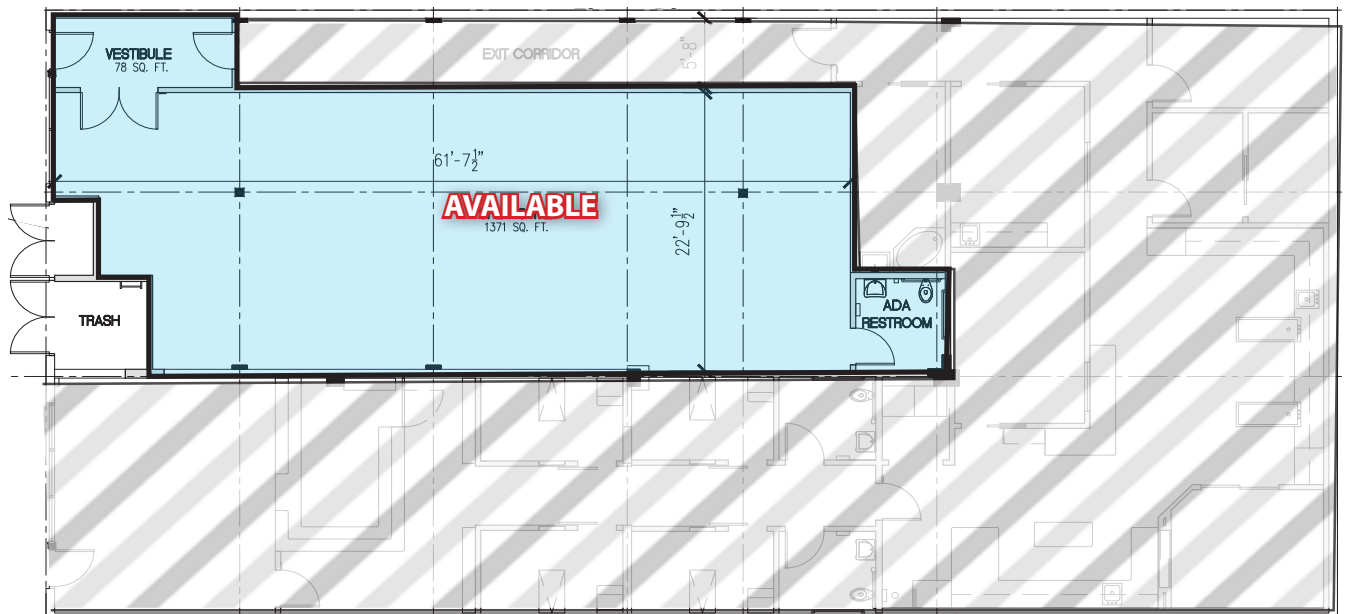
No warranty or representation is made to the accuracy of the foregoing information. Terms of sale or lease and availability are subject to change or withdrawal without notice.

# FOR LEASE

# 635 7th Ave - San Diego, CA 92101



## FLOOR PLAN



**LEE & ASSOCIATES®**  
COMMERCIAL REAL ESTATE SERVICES

**Al Apuzzo**  
(760) 448-2442  
aapuzzo@lee-associates.com  
CalBRE #01323215

**Alex Weiss**  
(760) 448-2452  
aweiss@lee-associates.com  
CalBRE #01893865

Lee & Associates Commercial Real Estate Services - 1900 Wright Place Ste 200 - Carlsbad, CA 92008

No warranty or representation is made to the accuracy of the foregoing information. Terms of sale or lease and availability are subject to change or withdrawal without notice.

**FOR LEASE**

635 7th Ave - San Diego, CA 92101

**INTERIOR PHOTOS**

