

**NEW  
OWNERSHIP**



## Route 38 at Hollywood Ave

523 Hollywood Ave | Cherry Hill, NJ 08002

### Property Description

Join new owner, Code Green Solar at 523 Hollywood Avenue, a three-story, exquisite multi-tenant office building located on the east side of Route 38 in Cherry Hill. The building features 30,000 SF of premiere, window-lined office space, surrounded by an abundance of nearby amenities.

Building Size:	30,000± SF
Lot Size:	1.31± acres
Stories:	3
Built:	1968 (Renovated 2013)
Parking:	102 vehicle spaces
Elevators:	1

### Availabilities

Suite 102	1,619± SF
Suite 201	2,542± SF
Suite 206	1,100± SF
Suite 207	538± SF
Suite 209	2,510± SF
Suite 300	11,088± SF

**Lease Rate:**  
**\$20.00/SF Full Service**

For more information:

**Rebecca Ting, SIOR**

+1 856 234 9600 • [rebecca.ting@naimertz.com](mailto:rebecca.ting@naimertz.com)

**Julie Kronfeld, SIOR**

+1 856 802 6516 • [julie.kronfeld@naimertz.com](mailto:julie.kronfeld@naimertz.com)

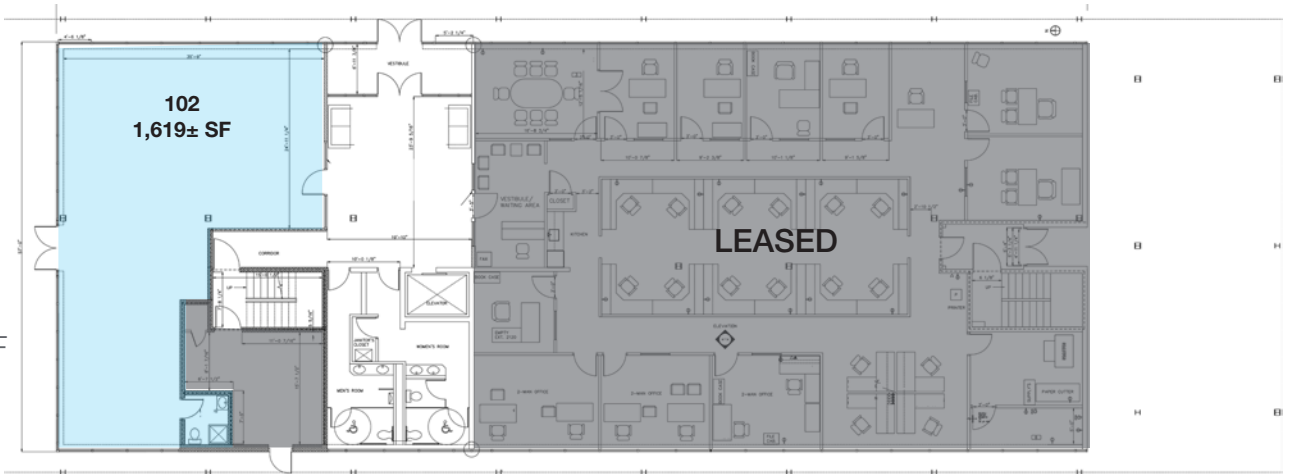
NO WARRANTY OR REPRESENTATION, EXPRESS OR IMPLIED, IS MADE AS TO THE ACCURACY OF THE INFORMATION CONTAINED HEREIN, AND THE SAME IS SUBMITTED SUBJECT TO ERRORS, OMISSIONS, CHANGE OF PRICE, RENTAL OR OTHER CONDITIONS, PRIOR SALE, LEASE OR FINANCING, OR WITHDRAWAL WITHOUT NOTICE, AND OF ANY SPECIAL LISTING CONDITIONS IMPOSED BY OUR PRINCIPALS NO WARRANTIES OR REPRESENTATIONS ARE MADE AS TO THE CONDITION OF THE PROPERTY OR ANY HAZARDS CONTAINED THEREIN ARE ANY TO BE IMPLIED.

21 Roland Avenue  
Mount Laurel, NJ 08054  
+1 856 234 9600

[naimertz.com](http://naimertz.com)

1

8,065± RSF  
Total



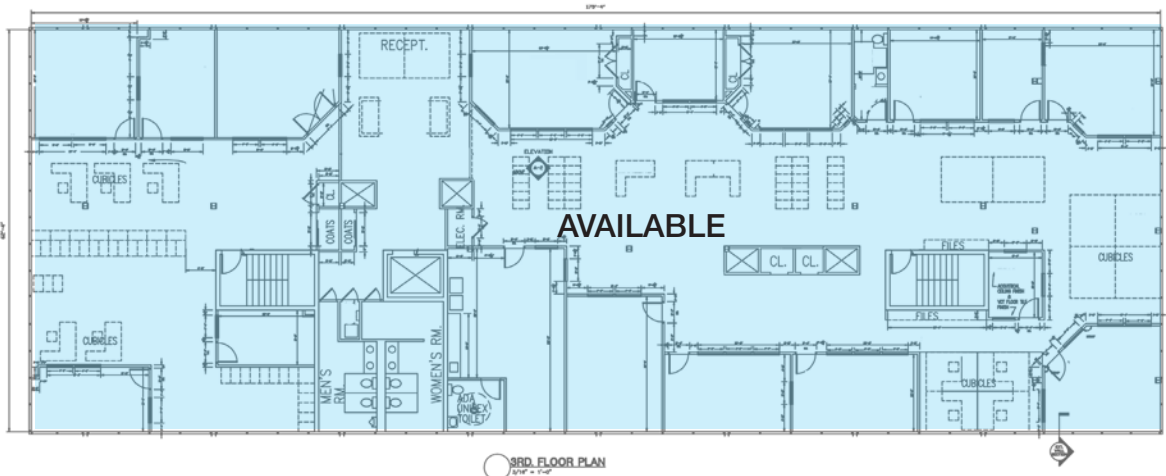
2

11,088± RSF  
Total



3

11,088± RSF  
Total





Interiors

523 Hollywood Ave  
Cherry Hill ,NJ

View the virtual tour of Suite 201 here:

<https://my.matterport.com/show/?m=HXWcdTwg1Jx>



Location Information

523 Hollywood Ave  
Cherry Hill, NJ



### Driving Distances

Cherry Hill Mall	0.75 mi	Route 70	1.6 mi	I-295 (Exit 36)	4.3 mi
Garden State Park	2.6 mi	Route 130	2.6 mi	NJ Tpk (Exit 4)	4.8 mi
Moorestown Mall	5.6 mi	Route 73	3.5 mi	Center City Phila	7.5 mi

### Nearby Amenities

#### Cherry Hill Mall



#### Shops at Garden State Park

