

SHOVEL READY INDUSTRIAL LAND

EXCLUSIVE LISTING | SWC THORNTON ROAD & LAWRENCE STREET | CASA GRANDE, ARIZONA

LOCATION Property is located at the SWC of Thornton Road and Lawrence Street in Casa Grande, Pinal County, Arizona

SIZE ±39.10 acres

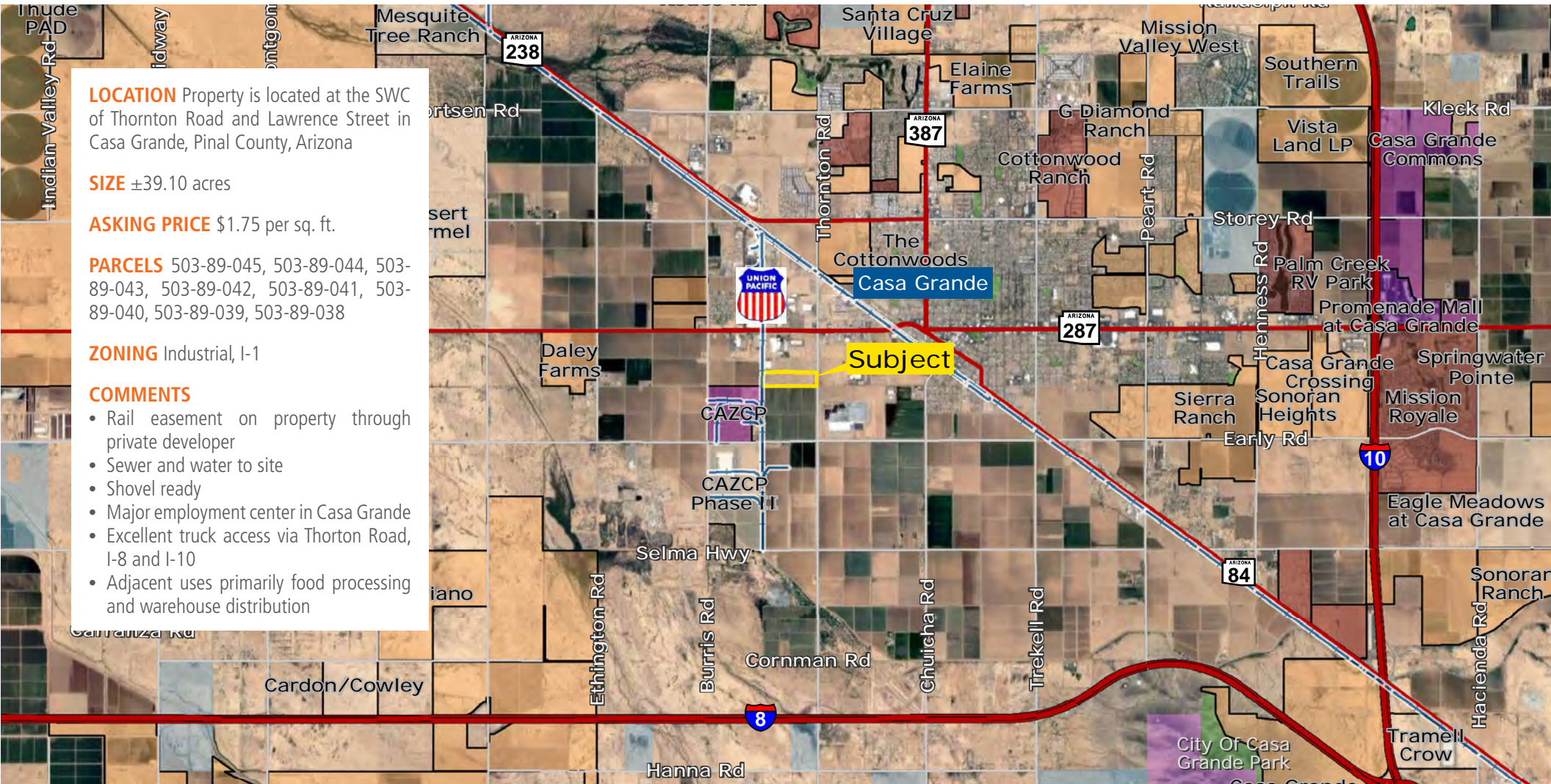
ASKING PRICE \$1.75 per sq. ft.

PARCELS 503-89-045, 503-89-044, 503-89-043, 503-89-042, 503-89-041, 503-89-040, 503-89-039, 503-89-038

ZONING Industrial, I-1

COMMENTS

- Rail easement on property through private developer
- Sewer and water to site
- Shovel ready
- Major employment center in Casa Grande
- Excellent truck access via Thornton Road, I-8 and I-10
- Adjacent uses primarily food processing and warehouse distribution



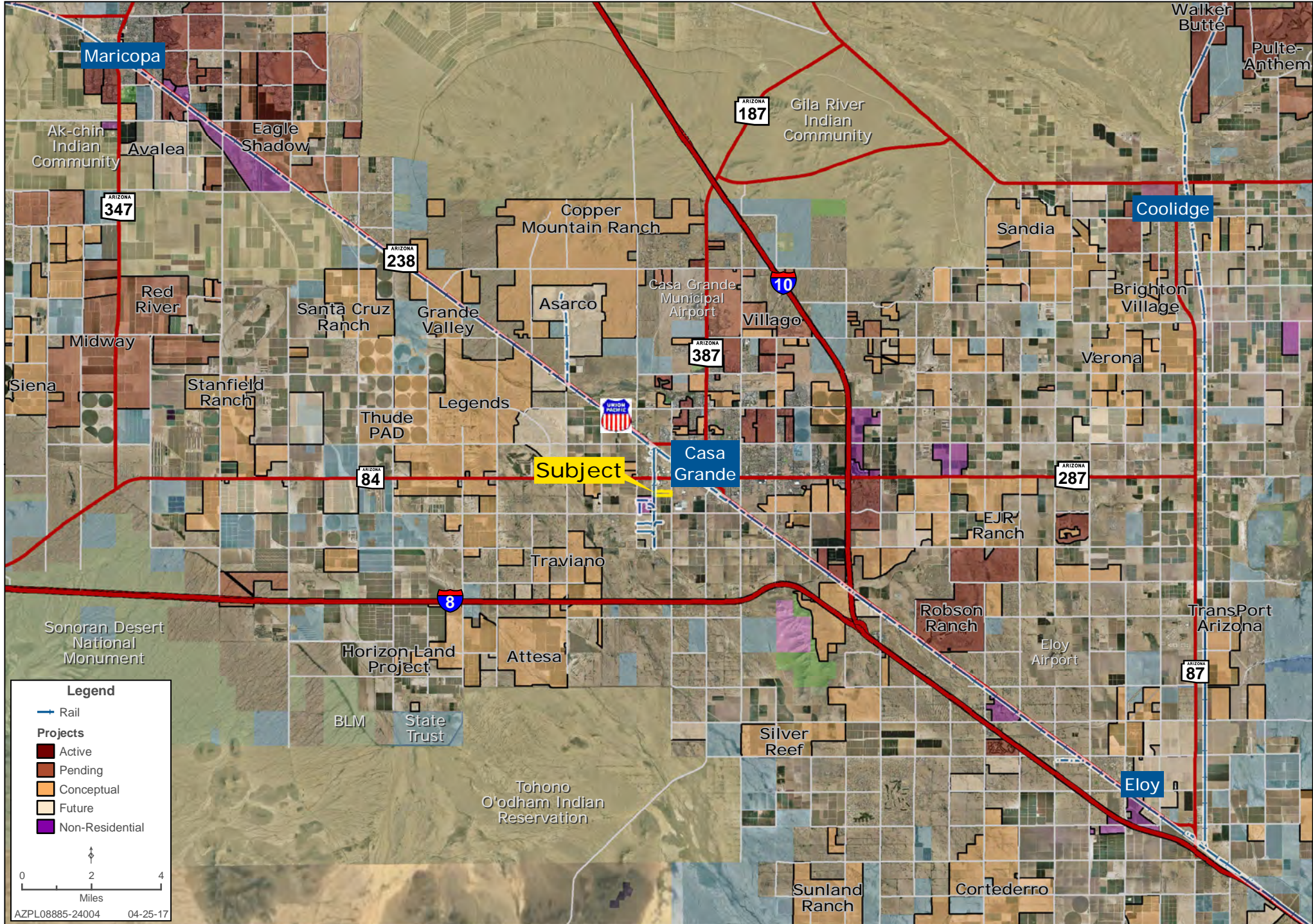
Kirk McCarville | kmccarville@landadvisors.com

4900 North Scottsdale Road, Suite 3000, Scottsdale, Arizona 85251 ph. 480.483.8100 | www.landadvisors.com

The information contained herein is from sources deemed reliable. We have no reason to doubt its accuracy but do not guarantee it. It is the responsibility of the person reviewing this information to independently verify it. This package is subject to change, prior sale or complete withdrawal. AZPL08885-3.8.18

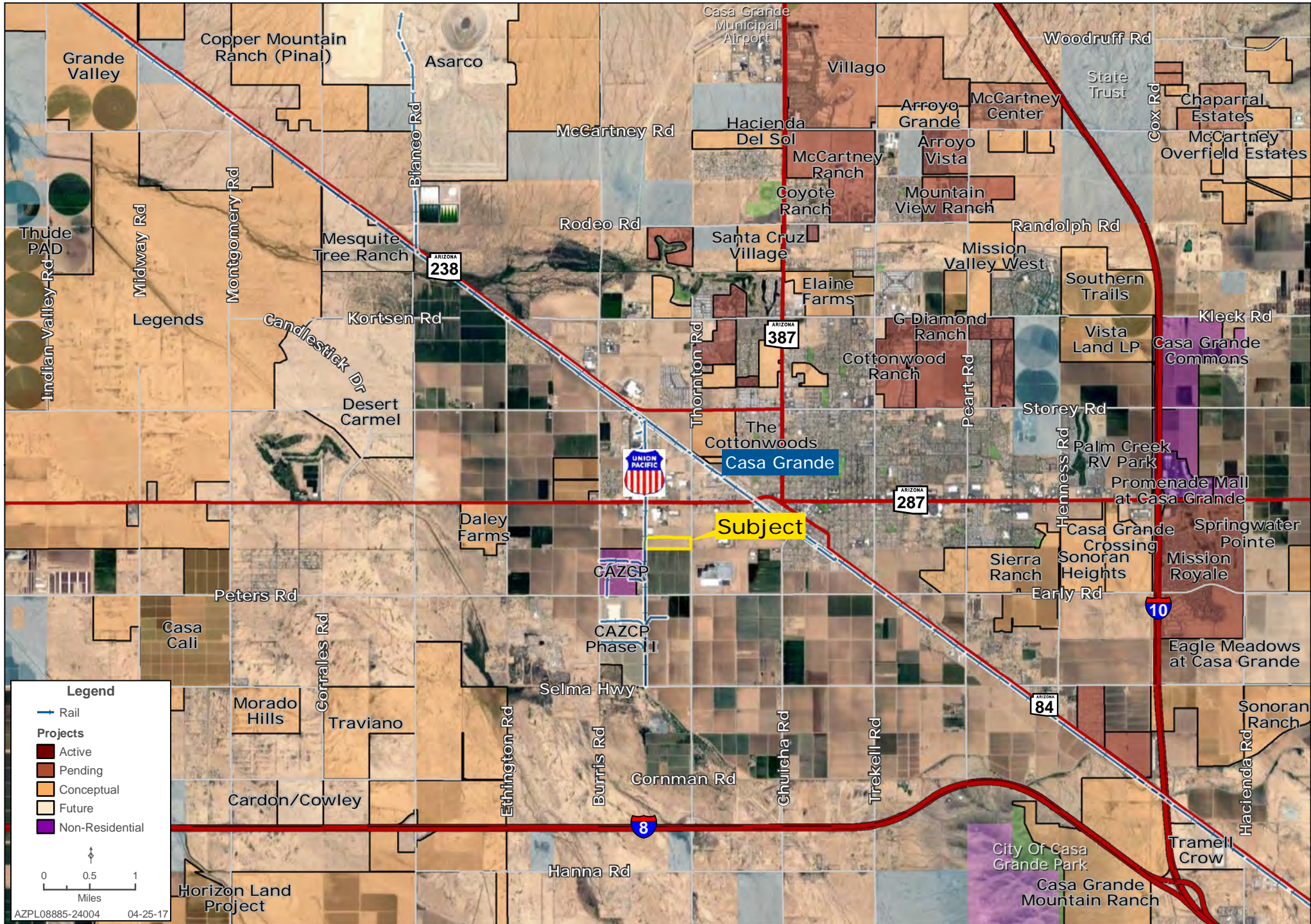
REGIONAL MAP

Kirk McCarville | 480.483.8100 | www.landadvisors.com



SURROUNDING DEVELOPMENT MAP

Kirk McCarville | 480.483.8100 | www.landadvisors.com



PROPERTY DETAIL MAP

Kirk McCarville | 480.483.8100 | www.landadvisors.com

