



42 MILITARY OCEAN TERMINAL

BAYONNE, NEW JERSEY



332,747 SF ON +/- 23.75 ACRES



**Excellent Road Network
Direct Access to
Exit 14A (Bayonne)**



**5 Miles to
Manhattan**



**Proximity to Second
Largest Port in the US &
Largest on the East Coast**



**Ideal for
Last Mile Distribution
& eCommerce**



LINCOLN LOGISTICS BAYONNE

CONCEPTUAL LAYOUT / BUILD-TO-SUIT LEASE OPTION AVAILABLE



	BUILDING 100
Acres	±18.35
Total Building SF	332,747
Car Parking	227
Trailer Parking	45
Dock Doors	66
Drive-in Doors	2
Typical Bay Size	54' x 50'
Speed Bay Size	54' x 60'
Clear Height	36'

	TRAILER LOT
Acres	±5.38
Car Parking	±600
Trailer Parking	140



332,747 SF AVAILABLE

- New Construction
- 800' to Global Container Terminal

SELECT PERMITTED USES

- Light Industrial
- Warehouse/Distribution
- Truck Terminal
- Commercial
- Motor Vehicle Storage
- Outdoor & commodity storage (including liquid natural gas & propane)

NEARBY PUBLIC TRANSPORTATION

- Hudson-Bergen Light Rail
- Ferry Service

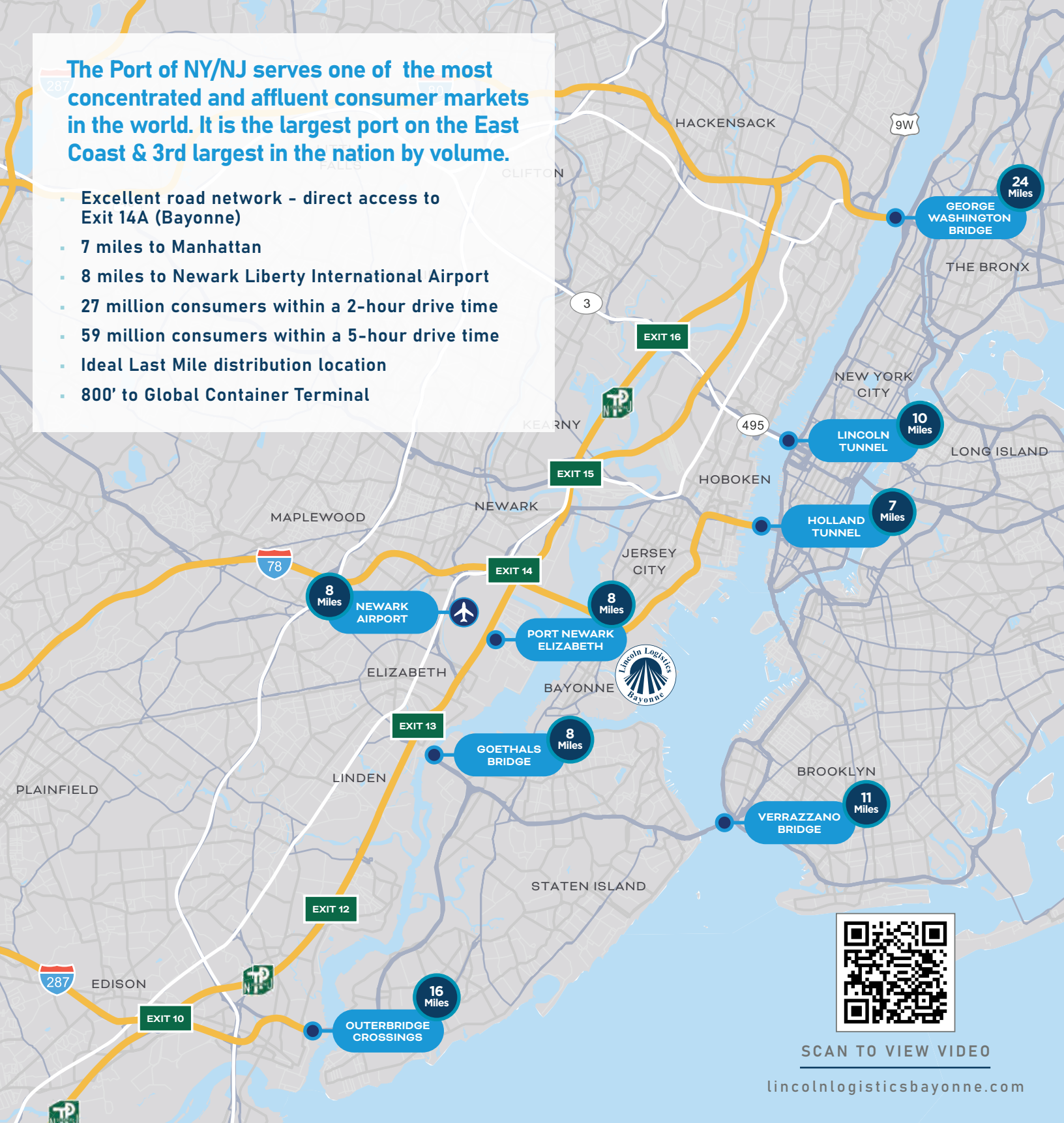


KEY

- Car Route
- Truck / Car Route
- Light Rail

The Port of NY/NJ serves one of the most concentrated and affluent consumer markets in the world. It is the largest port on the East Coast & 3rd largest in the nation by volume.

- Excellent road network - direct access to Exit 14A (Bayonne)
- 7 miles to Manhattan
- 8 miles to Newark Liberty International Airport
- 27 million consumers within a 2-hour drive time
- 59 million consumers within a 5-hour drive time
- Ideal Last Mile distribution location
- 800' to Global Container Terminal



SCAN TO VIEW VIDEO

lincolnlogisticsbayonne.com

For more information, please contact:

STAN DANZIG
Vice Chairman
+1 201 460 3388
stan.danzig@cushwake.com

JULES J. NISSIM
Vice Chairman
+1 201 460 3384
jules.nissim@cushwake.com

STEPHEN D. ELMAN
Executive Director
+1 201 460 3363
steve.elman@cushwake.com



Cushman & Wakefield of New Jersey, LLC
One Meadowlands Plaza, East Rutherford, NJ 07073
Phone: +1 201 935 4000
cushmanwakefield.com

Cushman & Wakefield copyright 2021. The depiction in the included photograph of any person, entity, sign, logo or property, other than Cushman & Wakefield's client and the property offered by Cushman & Wakefield, is incidental only, and is not intended to connote any affiliation, connection, association, sponsorship or approval by or between that which is incidentally depicted and Cushman & Wakefield or its client. This shall not be deemed an offer to lease, sublease, or sell such property; and, in the event of any transaction for such property, no commission shall be earned by or payable to any cooperating broker except if otherwise provided pursuant to the express terms, rates and conditions of Cushman & Wakefield's agreement with its principal, if, as and when such commission (if any) is actually received from such principal. (Inquire for rates and additional conditions).