



**CUSHMAN &  
WAKEFIELD**

FOR LEASE

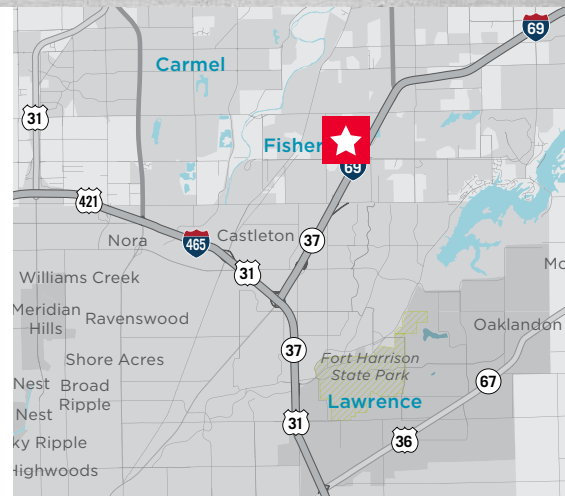
**9900 Westpoint Drive, Suite 120**  
Indianapolis, IN 46256



## Crosspoint II Office Warehouse Space

### Property Highlights

- Available SF: 5,200 SF
- Office SF: 969 SF
- Docks: 2
- Ceiling Height: 20'
- Available October 1, 2020
- Lease Rate: \$6.75/SF NNN
- Operating Expenses: \$2.43/SF (2020 Est.)



**Fritz A. Kauffman, SIOR**  
Managing Director  
Direct +1 317 639 0486  
fritz.kauffman@cushwake.com

**Bryan W. Poynter, SIOR, CCIM**  
Senior Director  
Direct +1 317 639 0482  
bryan.poynter@cushwake.com

One American Square, Suite 1800  
Indianapolis, IN 46282 | USA  
Main +1 317 634 6363  
Fax +1 317 639 0504

**cushmanwakefield.com**

©2020 Cushman & Wakefield. All rights reserved. The information contained in this communication is strictly confidential. This information has been obtained from sources believed to be reliable but has not been verified. NO WARRANTY OR REPRESENTATION, EXPRESS OR IMPLIED, IS MADE AS TO THE CONDITION OF THE PROPERTY (OR PROPERTIES) REFERENCED HEREIN OR AS TO THE ACCURACY OR COMPLETENESS OF THE INFORMATION CONTAINED HEREIN, AND SAME IS SUBMITTED SUBJECT TO ERRORS, OMISSIONS, CHANGE OF PRICE, RENTAL OR OTHER CONDITIONS, WITHDRAWAL WITHOUT NOTICE, AND TO ANY SPECIAL LISTING CONDITIONS IMPOSED BY THE PROPERTY OWNER(S). ANY PROJECTIONS, OPINIONS OR ESTIMATES ARE SUBJECT TO UNCERTAINTY AND DO NOT SIGNIFY CURRENT OR FUTURE PROPERTY PERFORMANCE.

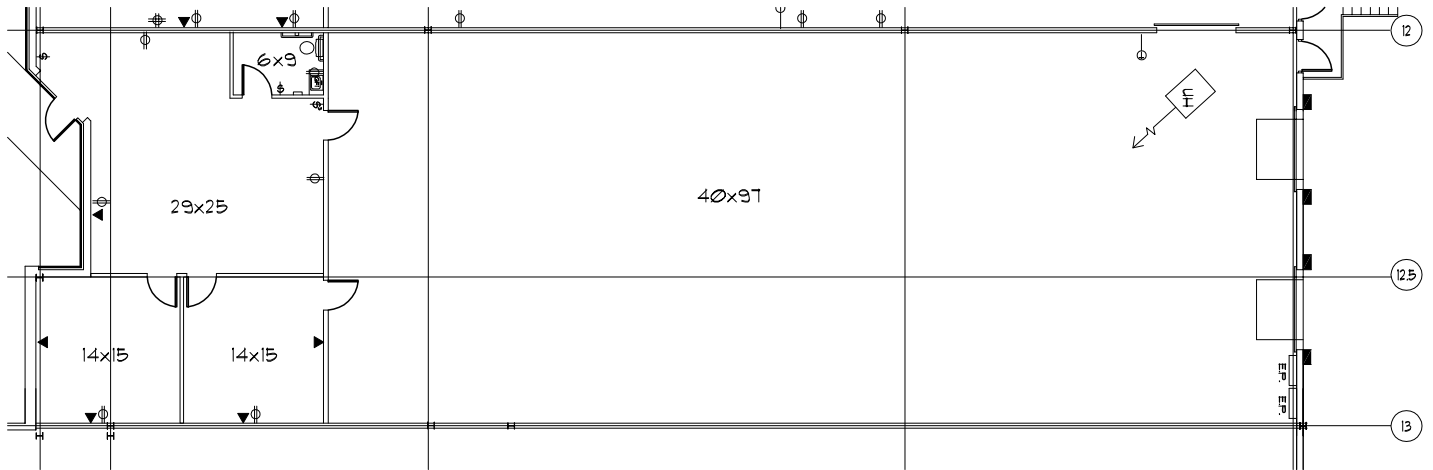


**CUSHMAN &  
WAKEFIELD**

FOR LEASE

**9900 Westpoint Drive, Suite 120**  
Indianapolis, IN 46256

## Floor Plan



**Fritz A. Kauffman, SIOR**  
Managing Director  
Direct +1 317 639 0486  
Mobile +1 317 753 4444  
fritz.kauffman@cushwake.com

**Bryan W. Poynter, SIOR, CCIM**  
Senior Director  
Direct +1 317 639 0482  
Mobile +1 317 670 4171  
bryan.poynter@cushwake.com

One American Square, Suite 1800  
Indianapolis, IN 46282 | USA  
Main +1 317 634 6363  
Fax +1 317 639 0504  
**cushmanwakefield.com**