



AVENUE OF THE AMERICAS

ROCKEFELLER CENTER



ROB LOWE / 212 841 5974 / robert.lowe@cushwake.com
PAIGE ENGELDRUM / 212 841 7740 / paige.engeldrum@cushwake.com
MARIA TRAVLOS / 212 713 6795 / maria.travlos@cushwake.com
PIERCE HANCE / 212 841 7641 / pierce.hance@cushwake.com
DANIEL ORGAN / 212 841 7720 / daniel.organ@cushwake.com

**ROCKEFELLER
GROUP**



A full commission computed and earned in accordance with the rates and conditions of our agency agreement with our principal, when received from our principal, will be paid to the cooperating broker who consummates a lease which is unconditionally executed and delivered by and between lessor and lessee (a copy of the rates and conditions referred to above is available upon request).



ENTIRE 20-22 FLOORS

47,777 RSF each
143,331 RSF total



ASKING RENT:

Upon Request



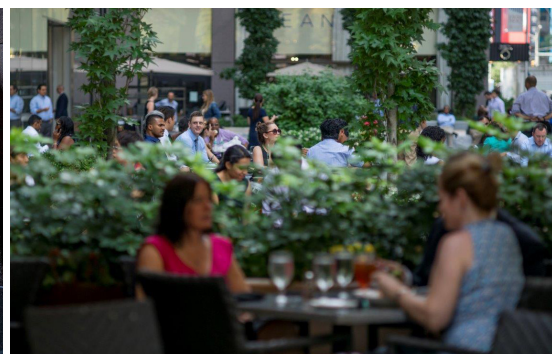
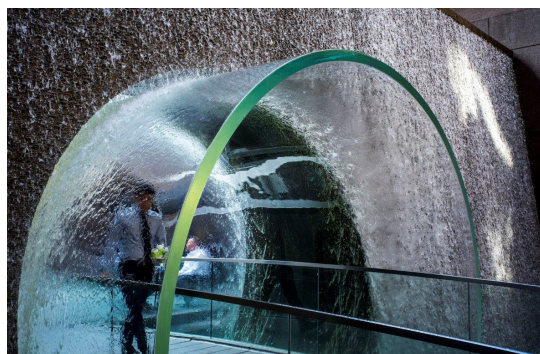
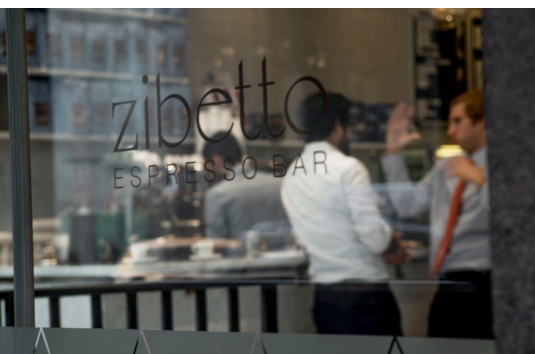
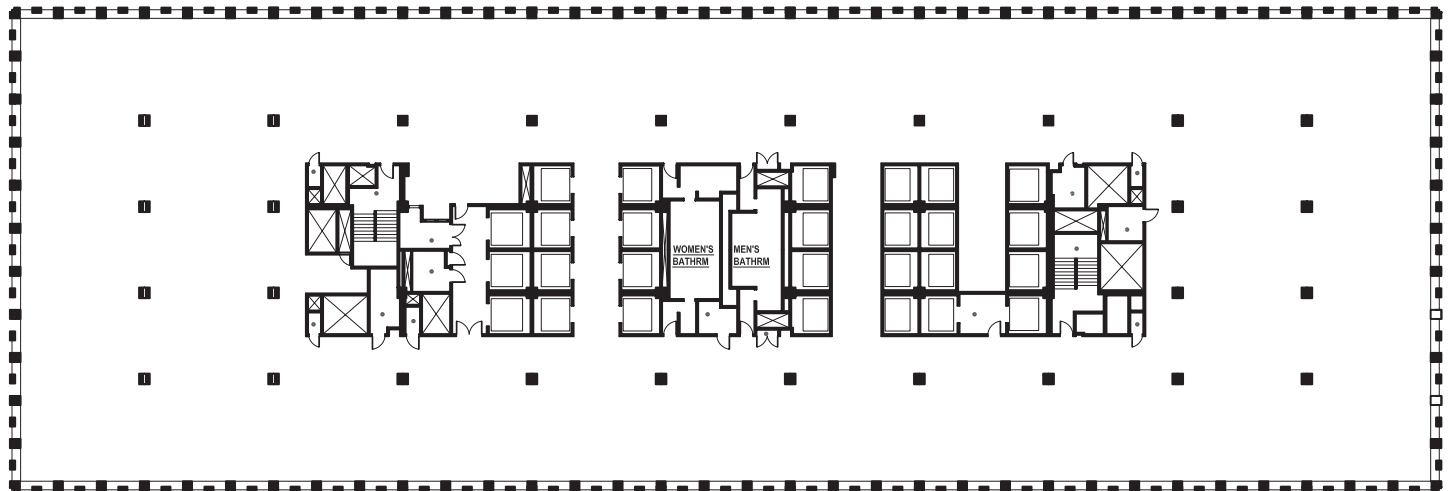
AVAILABILITY:

November 2021

BUILDING FEATURES

- Recently completed \$30 million capital improvement program featuring new lobby with original commissioned artwork, elevator cabs, destination dispatch system, and renovated outdoor plazas
- Dining amenities including Oceana and Del Frisco's, espresso café at Zibetto, "fast casual dining" at Chipotle and Café Metro, and cocktail and event venue at 48 Lounge
- Direct access to Rockefeller Center Concourse retail and dining
- Building is LEED Certified Silver and Wired Certified Platinum
- On-site private parking
- Convenient access to Grand Central, Penn Station and the Port Authority

FLOOR PLAN



BUILDING PHOTOS

