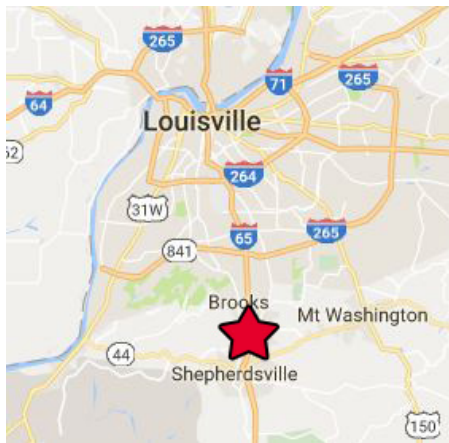


**LAND FOR SALE**  
**40.03 ACRES**

**PROPERTY FEATURES**

- Site has great exposure on I-65
- Water in the right-of-way
- Electric, gas and sewer near by
- Ferguson Lane has a 30' right-of-way
- Convenient access to I-65
- I-65 daily traffic count of 88,900

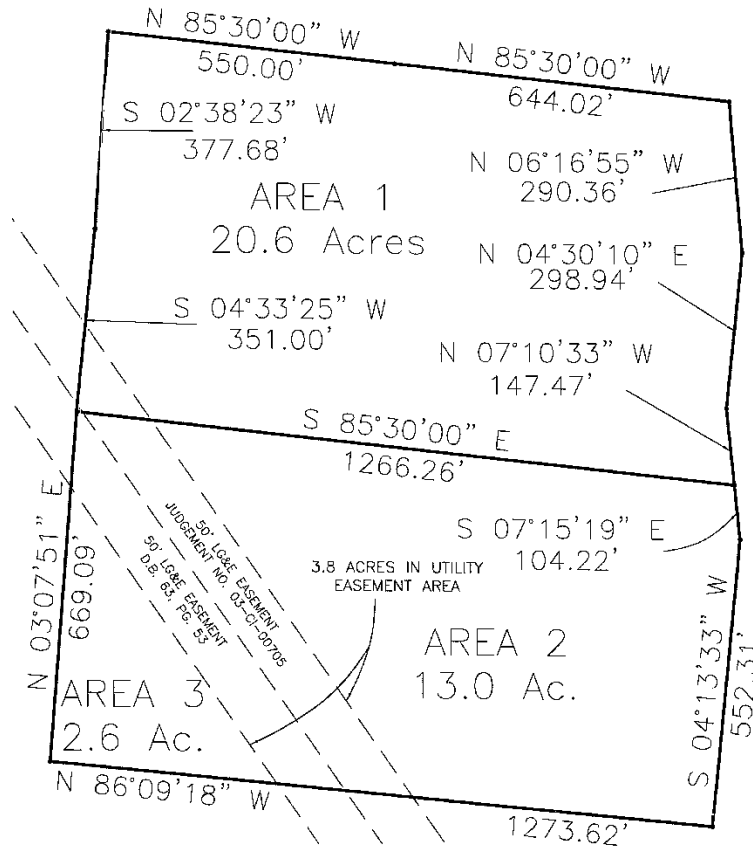


For more information, please contact:

**ROBERT B. WALKER, SIOR, CCIM**  
Senior Director  
Certified Supply Chain Professional  
502 589 5150 ext. 254  
rwalker@commercialkentucky.com

**STEPHAN F. GRAY, SIOR**  
Senior Director  
Certified Supply Chain Professional  
502 589 5150 ext. 256  
sgray@commercialkentucky.com

333 E. Main Street, Suite 510  
Louisville, KY 40202  
phone: +1 502 589 5150  
www.commercialkentucky.com



**PROPERTY LOCATION**

- Approximately 12 miles to airport
- Approximately 10 miles to UPS
- Approximately 2 miles to I-65

**UTILITIES**

- Sewer is approximately 4,300' away from site
- 4" gas main is approximately 2,900' away from site (LG&E)
- 3 phase electric is approximately 1,200' away from site (Salt River Electric)
- Water is in right-of-way

For more information, please contact:

**ROBERT B. WALKER, SIOR, CCIM**  
Senior Director  
Certified Supply Chain Professional  
502 589 5150 ext. 254  
rwalker@commercialkentucky.com

**STEPHAN F. GRAY, SIOR**  
Senior Director  
Certified Supply Chain Professional  
502 589 5150 ext. 256  
sgray@commercialkentucky.com

333 E. Main Street, Suite 510  
Louisville, KY 40202  
phone: +1 502 589 5150  
www.commercialkentucky.com