

FOR LEASE

5401 32nd Ave NW
Gig Harbor, WA 98335

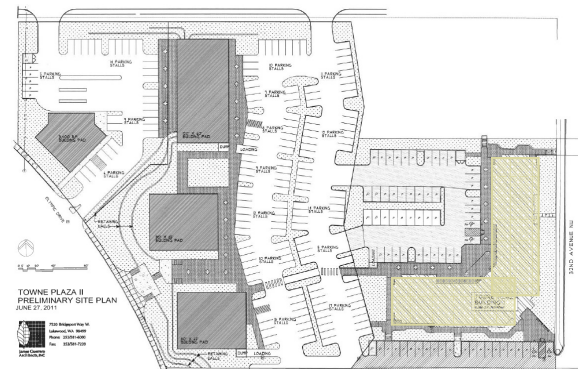
Towne Plaza I



This high quality Class A building offers close Highway 16 access via Olympic Drive NW, in Gig Harbor's emerging Olympic Corridor.

Property Information

- Approximately 26,000 square feet of Class "A" mixed use Office and Retail
- Storefront suites divisible to approximately 1,200 RSF
- Stylish awnings, lighting, cornice molding, stamped concrete
- Central Gig Harbor location with easy access to Highway 16
- Generous Tenant Improvement Allowance Available
- Suites 100, 101, and 104 have Pending Leases with Oakridge Homes, RoMa Yoga, and Edward Jones



For More Information Call

253-853-3223

Gary Gallinger
Cell: 253-988-3367
gary@HarborRA.com



Seth Fisher
Cell: 253-221-9840
seth@HarborRA.com

Misha Gallinger
Cell: 253-224-6212
misha@HarborRA.com

4221 Harborview Drive NW #100
Gig Harbor, WA 98332
www.HarborRA.com



For More Information Call 253-853-3223

Gary Gallinger
 Cell: 253-988-3367
gary@HarborRA.com



Seth Fisher
 Cell: 253-221-9840
seth@HarborRA.com

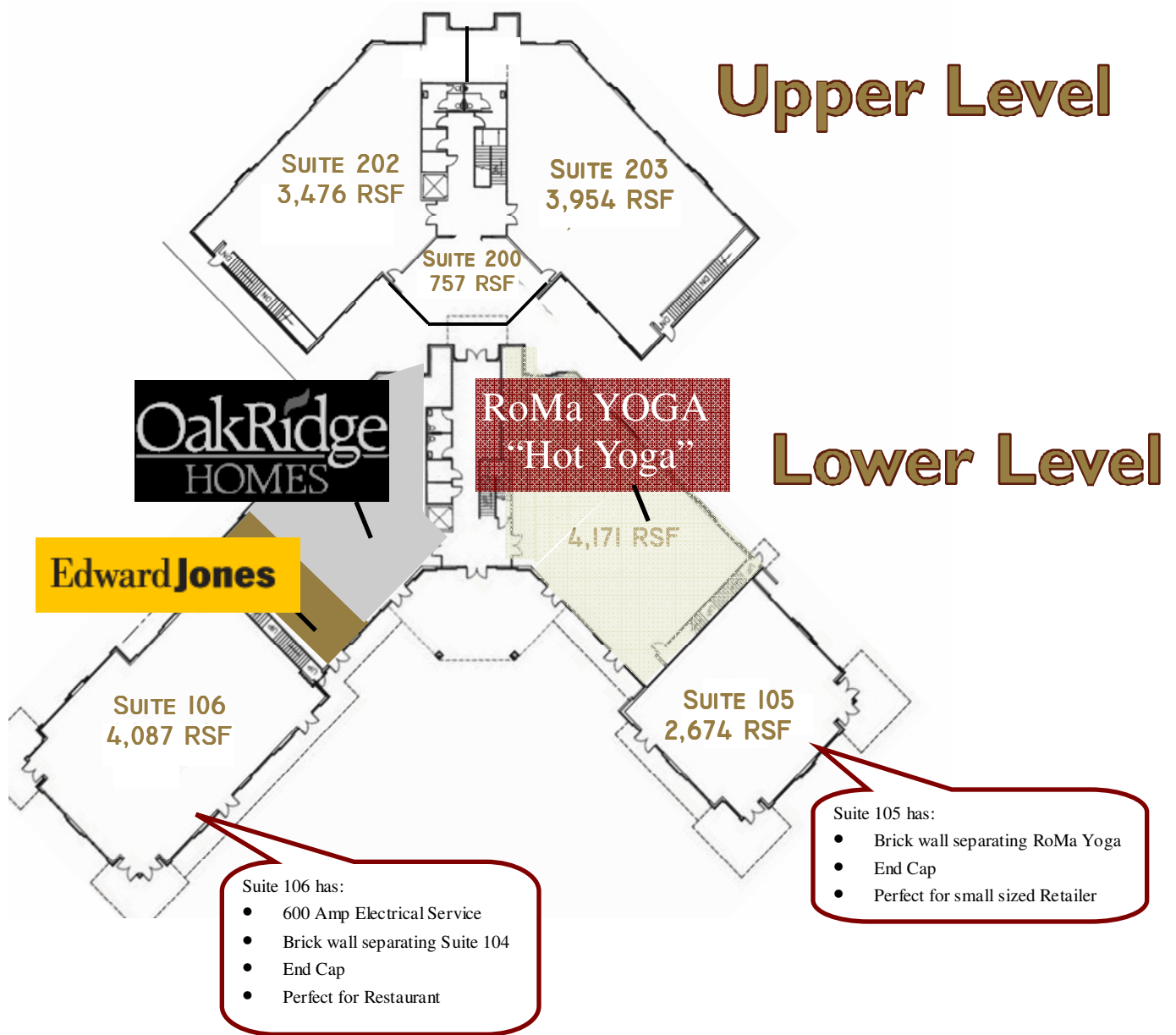
Misha Gallinger
 Cell: 253-224-6212
misha@HarborRA.com

4221 Harborview Drive NW #100
 Gig Harbor, WA 98332
www.HarborRA.com

All measurements, figures and information are approximate. Source of information deemed reliable, but not guaranteed.

Towne Plaza

5402 32nd Ave NW, Gig Harbor, WA 98335



For More Information Call

253-853-3223

Gary Gallinger
Cell: 253-988-3367
gary@HarborRA.com



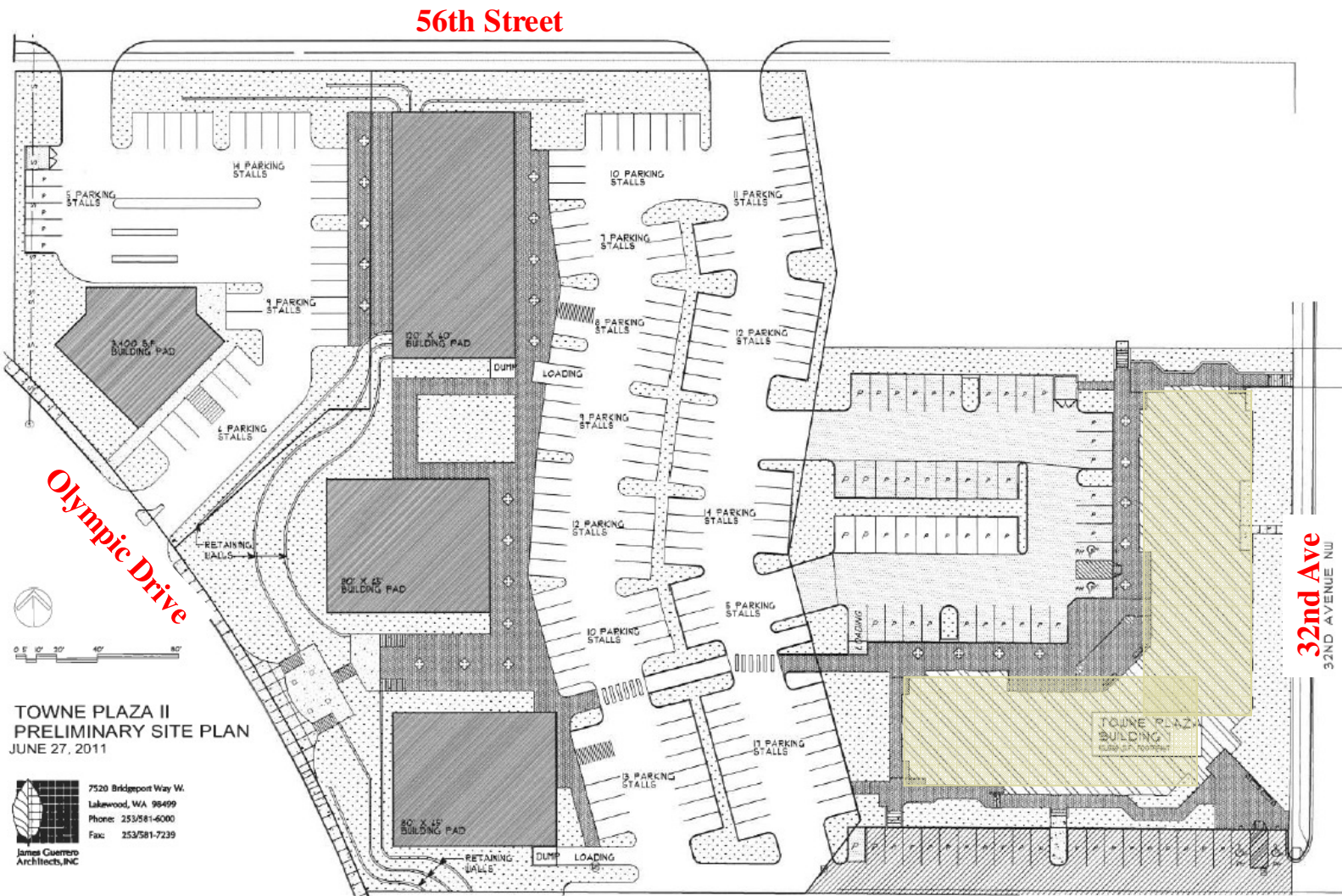
Seth Fisher
Cell: 253-221-9840
seth@HarborRA.com

Misha Gallinger
Cell: 253-224-6212
misha@HarborRA.com

4221 Harborview Drive NW #100
Gig Harbor, WA 98332
www.HarborRA.com

All measurements, figures and information are approximate. Source of information deemed reliable, but not guaranteed.

Towne Plaza Preliminary Site Plan



TOWNE PLAZA II
PRELIMINARY SITE PLAN
JUNE 27, 2011

7520 Bridgeport Way W.
Lakewood, WA 98499
Phone: 253/581-6000
Fax: 253/581-7239
James Guerrero
Architects, INC

For More Information Call **253-853-3223**

Gary Gallinger
Cell: 253-988-3367
gary@HarborRA.com



Seth Fisher
Cell: 253-221-9840
seth@HarborRA.com

Misha Gallinger
Cell: 253-224-6212
misha@HarborRA.com

4221 Harborview Drive NW #100
Gig Harbor, WA 98332
www.HarborRA.com

All measurements, figures and information are approximate. Source of information deemed reliable, but not guaranteed.