

## Fife / Puyallup Area Contractors Yard

52nd Street East &  
Freeman Road East  
Fife, WA



### Features

±4.93 acres (per Pierce  
County records)

Parcel # 0420201101

Zoned EC, Pierce County

To be built:

Fenced, gravelled and lighted

Site dimensions:

±320' wide x ±675' deep

Available Q2 2019

Call broker for rates

### Location



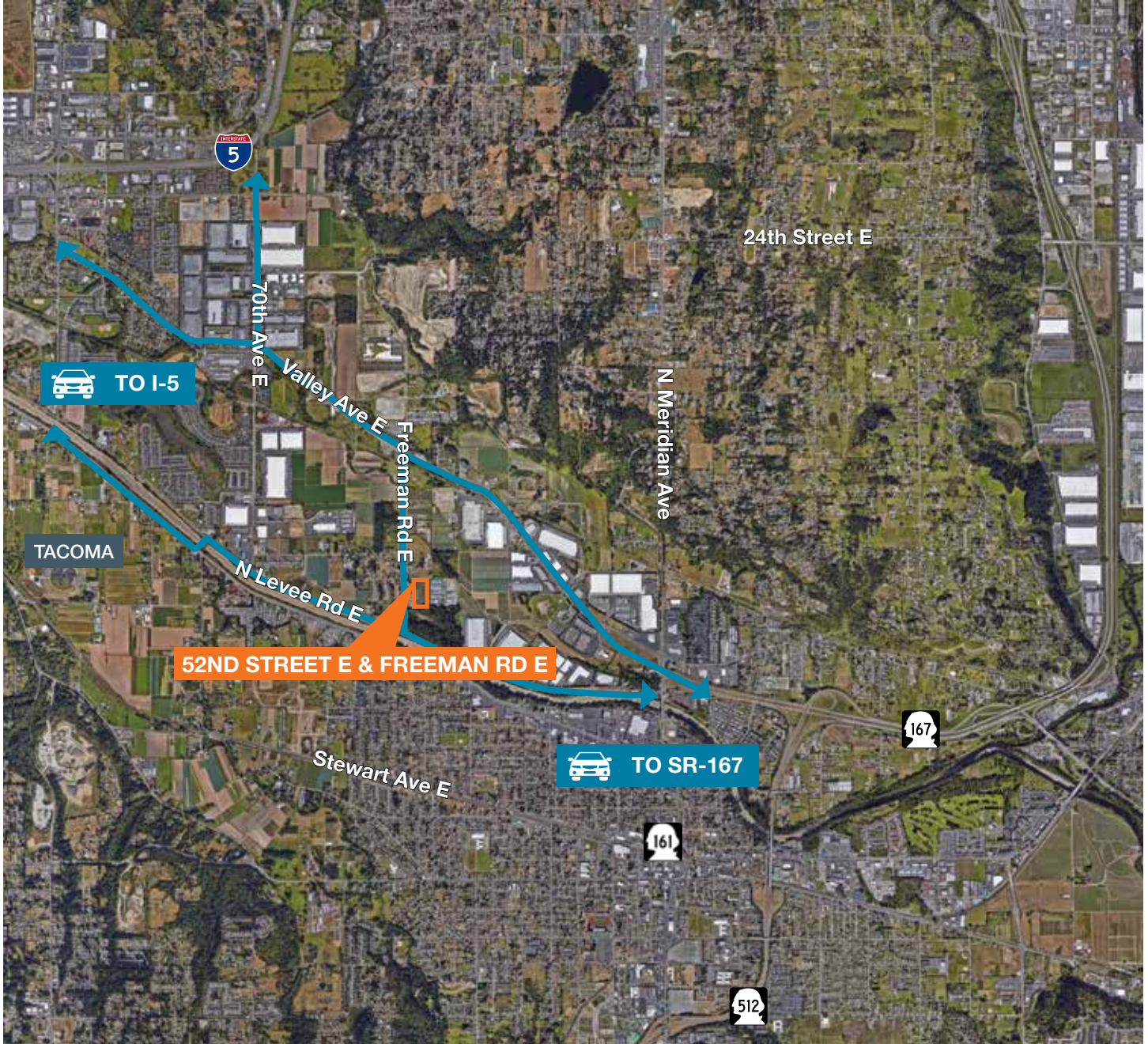
### Contact

**Peter Wooding**

206.248.7301

[pwooding@kiddermathews.com](mailto:pwooding@kiddermathews.com)

## Fife / Puyallup Area Contractors Yard



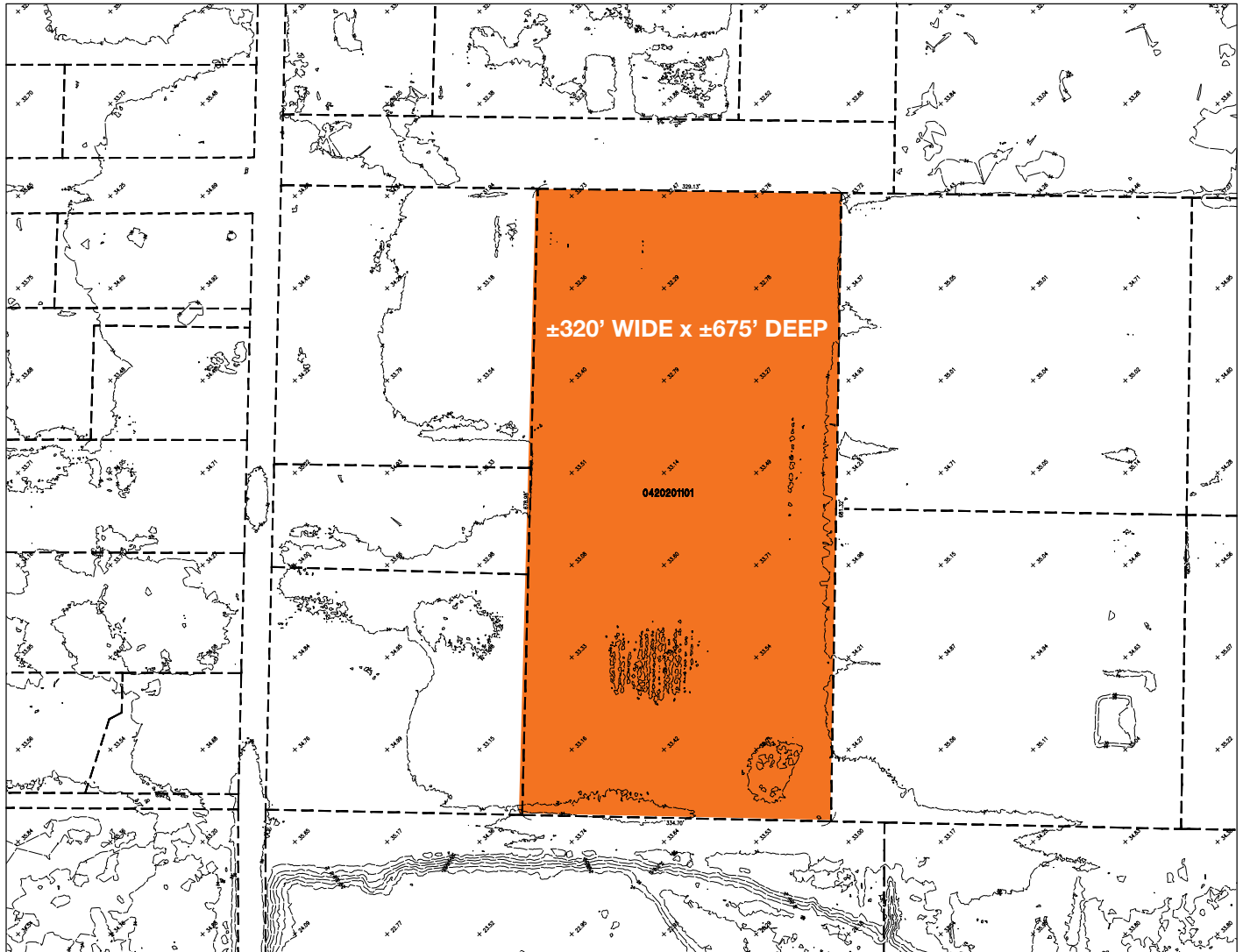
### Contact

**Peter Wooding**

206.248.7301

[pwooding@kiddermathews.com](mailto:pwooding@kiddermathews.com)

## Fife / Puyallup Area Contractors Yard



### Contact

**Peter Wooding**  
206.248.7301  
pwooding@kiddermathews.com