

Formerly Rick's Tavern

+/- 3,900 SF Free Standing Building

4002 W. 9th Street

Trainer, Pa 19061

ZOMMICK McMAHON

Commercial Real Estate Inc.

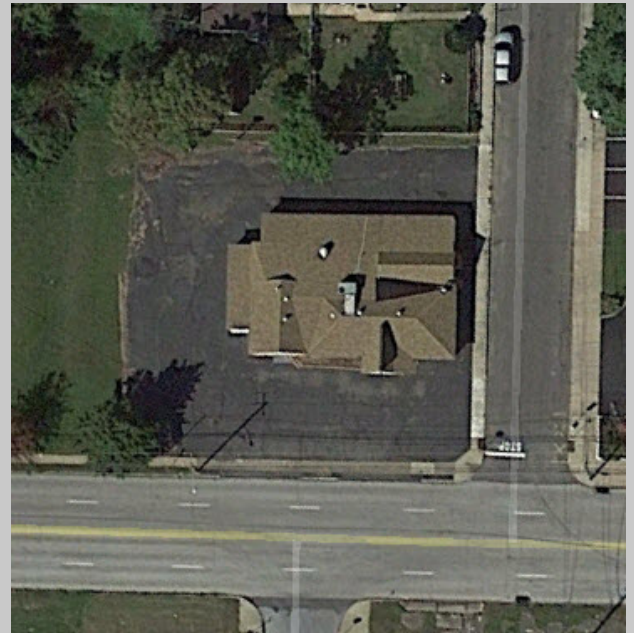
610.359.1100

Asking Sale Price Significantly Reduced: \$136,500



Building / Site Info

- ☐ Located Directly at the corner of 9th Street and Chestnut St.
- ☐ Expansive Parking Lot
- ☐ Entire lot sits on 1/3 of an Acre
- ☐ Large circular bar, dining room, stage/dance floor
- ☐ Spacious kitchen with gas range and (3) sinks
- ☐ (2) Curb-Cuts
- ☐ Excellent Signage / Visibility
- ☐ Public Water / Sewer
- ☐ Annual Taxes: \$9,920 (2016)



1306 Wilmington Pike, Suite A-2
West Chester, PA 19382
610.359.1100
www.ZMCRE.com

Dan Heuser
610.764.9396 (m)
Dheuser@ZMCRE.com

Gregory Boone
484.631.5055 (m)
Gboone@ZMCRE.com

* The information attached and above has been obtained from sources believed to be reliable. While we do not doubt its accuracy, we have not verified it and make no guarantee, warranty or representation of it. It is the Buyer/Lessee responsibility to independently confirm its accuracy and completeness. This is not intended to solicit another Broker's listing.

Formerly Rick's Tavern

+/- 3,900 SF Free Standing Building

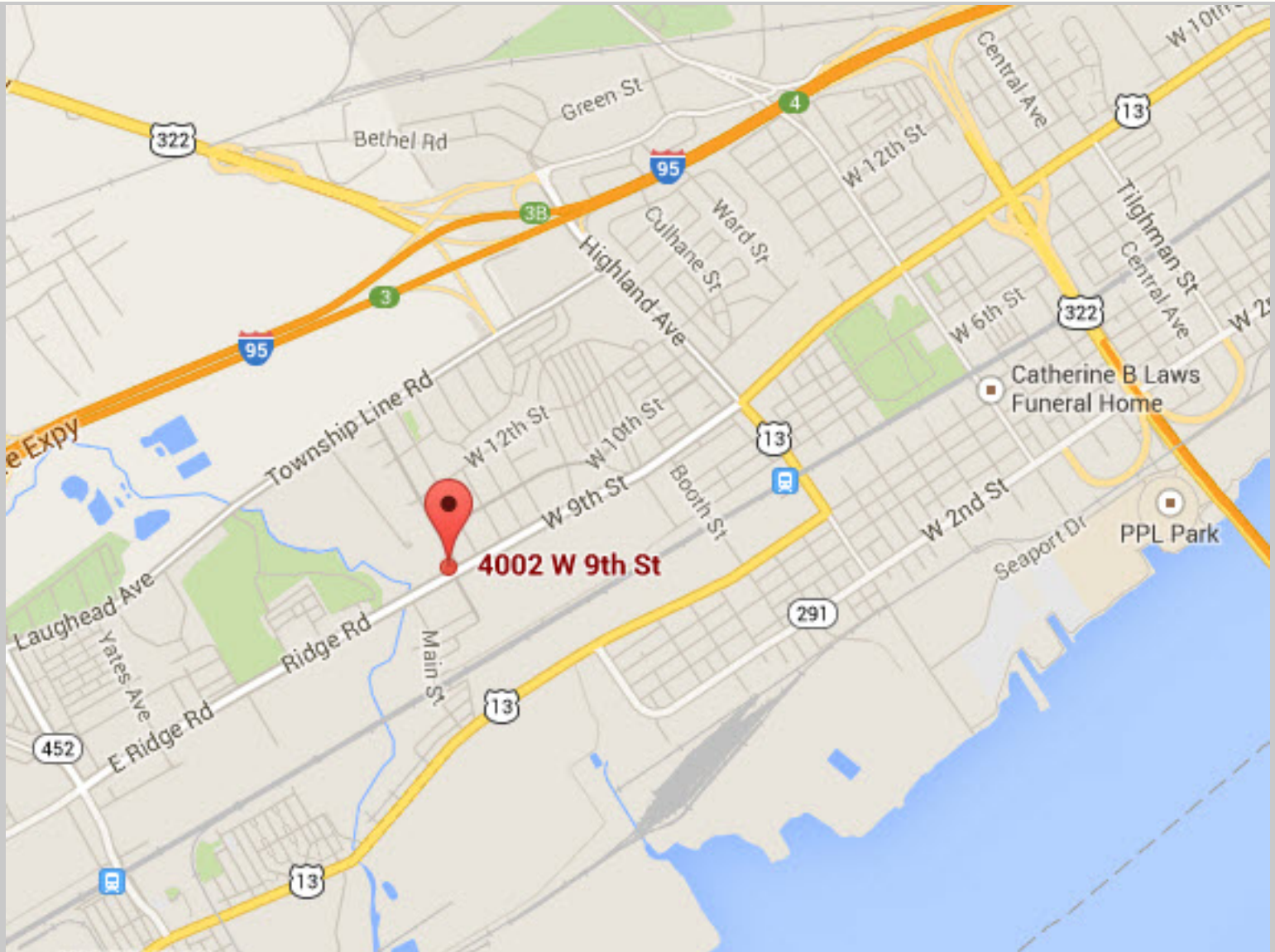
4002 W. 9th Street

Trainer, Pa 19061

ZOMMICK McMAHON

Commercial Real Estate Inc.

610.359.1100



- Located within two miles of I-95, Route 322, 452, The Commodore Barry Bridge, and PPL Park. Near the borders of New Jersey and Delaware.

1306 Wilmington Pike, Suite A-2
West Chester, PA 19382
610.359.1100
www.ZMCRE.com

Dan Heuser
610.764.9396 (m)
Dheuser@ZMCRE.com

Gregory Boone
484.631.5055 (m)
Gboone@ZMCRE.com

* The information attached and above has been obtained from sources believed to be reliable. While we do not doubt its accuracy, we have not verified it and make no guarantee, warranty or representation of it. It is the Buyer/Lessee responsibility to independently confirm its accuracy and completeness. This is not intended to solicit another Broker's listing.

Formerly Rick's Tavern

+/- 3,900 SF Free Standing Building

4002 W. 9th Street

Trainer, Pa 19061

ZOMMICK McMAHON

Commercial Real Estate Inc.

610.359.1100

ABOUT ZOMMICK McMAHON COMMERCIAL REAL ESTATE

Zommick McMahon Commercial Real Estate, Inc. has been a Metro Philadelphia Area staple since its inception in 1949. The Company was founded by Joseph Zommick, and continues today with Ryan McMahon and his highly experienced staff, whom are all results-oriented professionals. Zommick McMahon Commercial Real Estate, Inc. has devoted Real Estate Specialists in the areas of Investment, Office, Retail, Industrial, as well as extensive experience in all areas of Development.

SOME OF OUR SATISFIED CLIENTS

- Bank of America
- Walgreen's Drugs
- Sunoco Oil Company
- Exxon/Mobil Oil Company
- Regency Centers
- Iron Hill Brew Company
- Sun East Federal Credit Union
- Dunkin Donuts
- Royal Farms
- Rite Aid
- CVS
- Wawa
- WSFS Bank
- Primo Hoagies



1306 Wilmington Pike, Suite A-2
West Chester, PA 19382
610.359.1100
www.ZMCRE.com

Dan Heuser
610.764.9396 (m)
Dheuser@ZMCRE.com

Gregory Boone
484.631.5055 (m)
Gboone@ZMCRE.com

* The information attached and above has been obtained from sources believed to be reliable. While we do not doubt its accuracy, we have not verified it and make no guarantee, warranty or representation of it. It is the Buyer/Lessee responsibility to independently confirm its accuracy and completeness. This is not intended to solicit another Broker's listing.