

# 303 STANHOPE STREET

BUSHWICK, BROOKLYN



RETAIL SPACE  
FOR LEASE

# BUSHWICK BROOKLYN

# 303 STANHOPE STREET

## SPACE HIGHLIGHTS

### LOCATION

Between Irving Ave  
and Wyckoff Ave

### CEILING HEIGHT

12.5 FT

### DIMENSIONS

20 FT x 20 FT

### OCCUPANCY

Immediate

### HIGHLIGHTS

- Adjacent to Wyckoff & Irving Retail Corridors
- High Ceilings
- Private Restrooms
- HVAC
- Recessed Lighting

### SPACE

400 SF

### FRONTAGE

20 FT

### ZONING

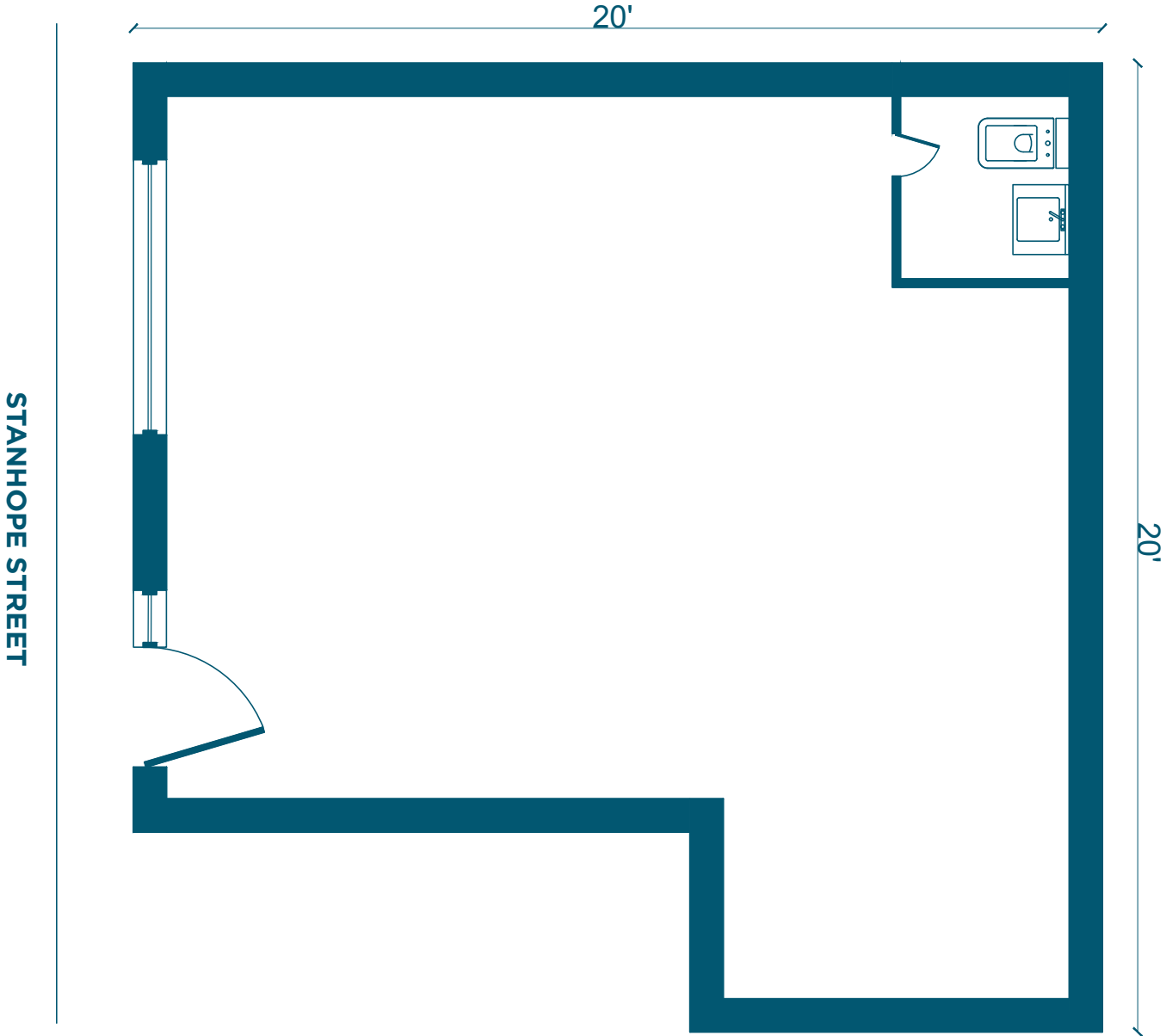
R6

### ASKING RENT

Upon Request



**FLOORPLANS & DETAILS**



# BUSHWICK BROOKLYN

# 303 STANHOPE STREET

## EXISTING CONDITION



**NEIGHBORHOOD DEMOGRAPHICS**



**156,905**

POPULATION  
WITHIN 1-MILE  
RADIUS

---



**34.6 Years**

AVERAGE  
POPULATION  
AGE

---



**4.10%**

POPULATION  
GROWTH  
SINCE 2010

---



**\$68,610**

AVERAGE HHI  
WITHIN 1-MILE  
RADIUS

---



**3,630**

TOTAL BUSINESSES  
WITHIN 1-MILE  
RADIUS

---



**\$1 bn**

ANNUAL SPENDING  
WITHIN 1-MILE  
RADIUS

---

# BUSHWICK BROOKLYN

# 303 STANHOPE STREET

## NEIGHBORHOOD & TRANSPORTATION

### NEIGHBORHOOD TENANTS

- Wyckoff Heights Medical Center
- Variety Coffee Roasters
- Sol De Quito
- Milk & Pull
- Brooklyn Bow Wow
- Maria Hernandez Park
- Blink Fitness
- Darlings
- Boobie Trap
- Chimu Express
- Sicily's Best Pizza
- June
- Old Stanley's Bar
- Circo's Pastry Shop
- Dromedary Urban Tiki Bar
- Tony's Pizza
- Starr Bar
- Catania Bakery
- Mixtape Bushwick
- Walgreens
- Sally Roots
- Yo! Braces Orthodontics

### TRANSPORTATION

- 3 Min Walk at DeKalb Avenue (0.1 mi)
- 9 Min Walk at Jefferson Street (0.4 mi)
- 10 Min Walk at Knickerbocker Avenue (0.5 mi)
- 10 Min Walk at Myrtle-Wyckoff Avenues (0.5 mi)
- 14 Min Walk at Central Avenue (0.6 mi)



**BUSHWICK BROOKLYN**

**303 STANHOPE STREET**

**CONTACT**

