



# 1125 POST ROAD | FAIRFIELD, CT

## DEMOGRAPHICS

### POPULATION

1 mile: 11,286  
3 miles: 56,748  
5 miles: 151,763

### # HOUSEHOLDS

1 mile: 4,217  
3 miles: 20,812  
5 miles: 53,972

### AVG. HOUSEHOLD \$

1 mile: \$192,811  
3 miles: \$167,764  
5 miles: \$132,059



# LEASING: 1,215 SF

## BE A PART OF THE BRICK WALK

Talk about convenient? Located in brick walk, this space is perfect for a quick stop, while your customers are pumping gas. Downtown Fairfield is thriving and you can get into the action.

**AREA RETAILERS:** Starbucks, Bed Bath & Beyond, Stop & Shop, CVS, Marshalls, DSW and several others.

**24,300 ± VPD**

## A TRUE EXCLUSIVE... CALL FOR THE DETAILS!

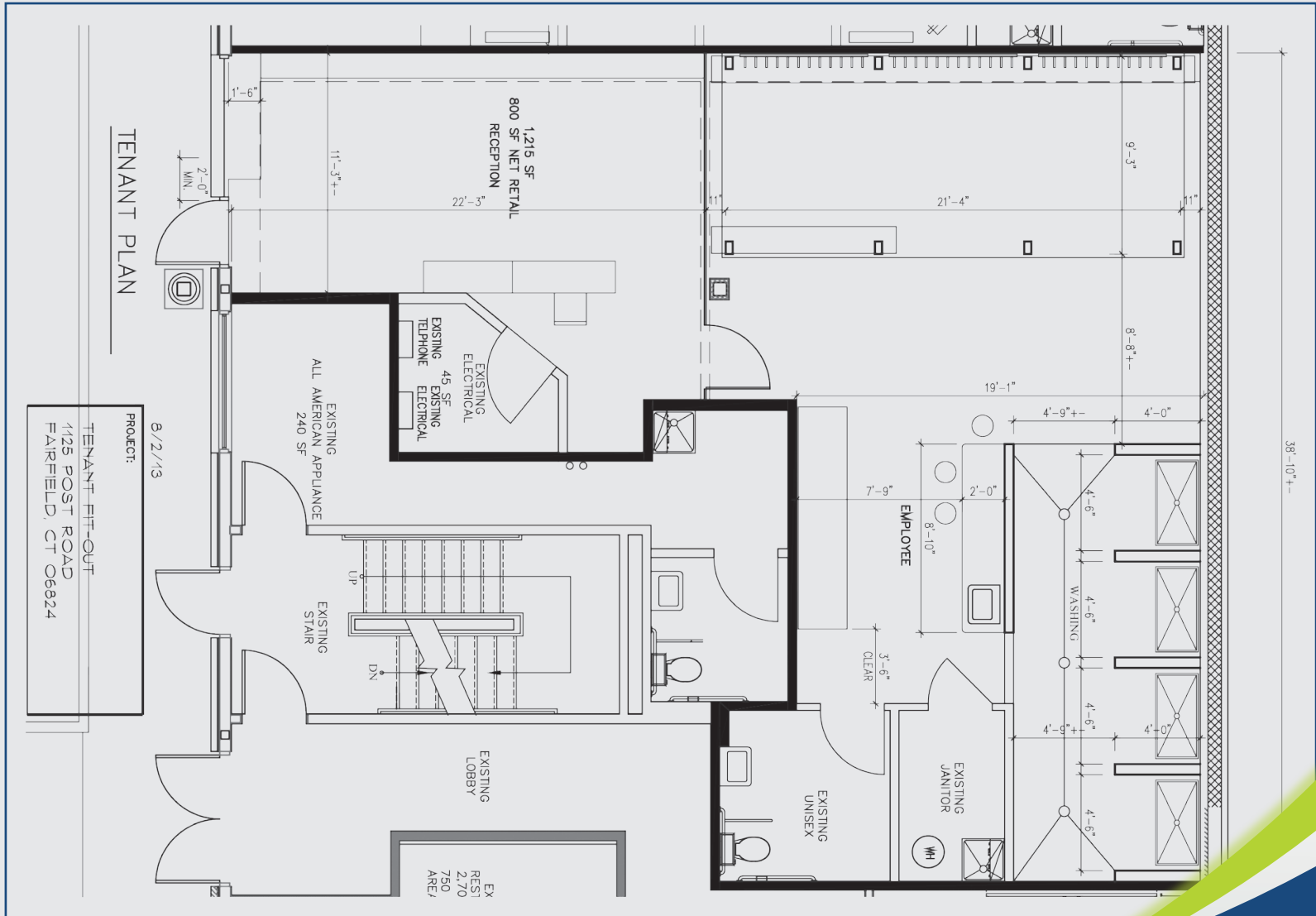
AGENTS:

**Richard Schnider**  
203.762.6173 | rs@truecre.com

**Dominick Musilli**  
203.529.4629 | dm@truecre.com



This information provided in this marketing package has been obtained from sources believed reliable, but has not been verified for accuracy or completeness. You should conduct a careful, independent investigation of the property and verify all information. Any reliance on this information is solely at your own risk.





# 1125 POST ROAD | FAIRFIELD, CT

### LAKE HILL SHOPPING CENTER

- Pier 1 Imports
- TRADER JOE'S
- Qdoba MEXICAN GRILL
- Panera BREADS

### FAIRFIELD WOODS

- COLD STONE
- SUBWAY
- MATTRESS FIRM

### BLACK ROCK SHOPPING CENTER

- ME Message Envoy
- Old Navy
- AspenDental
- GameStop
- Jersey Mike's
- Meat's southwest grill
- lash
- at&t
- GAP
- EASTERN BEE HONEY



### TURNPIKE SHOPPING CENTER

- ShopRite
- verizon
- GameStop
- GameStop
- EDGE FITNESS CLUB
- THE HOME DEPOT
- WebsterBank
- SMART GUY



26,900 VPD

BLACK ROCK TURNPIKE



136,627 VPD



### KINGS CROSSING SHOPPING CENTER

- WHOLE FOODS
- FIVE GUYS
- PETCO
- CVS
- CHASE
- sleep number

### FAIRWAY CENTER



SITE



### FAIRFIELD SHOPPING CENTER

- BOB'S STORES
- ups
- Village Bigles
- M&T Bank
- Jimmy Casey

