

# Office Space For Lease

6085 State Farm Drive, Rohnert Park



## ±932 - ±14,991 Rentable Square Feet Available

We are pleased to offer the following suites:

<b>Suite 100:</b>	±4,819 rsf	\$1.45/sf
<b>Suite 105:</b>	± 932 rsf	\$1.45/sf
<b>Suite 115:</b>	±1,109 rsf	\$1.10/sf
<b>Suite 120:</b>	±1,383 rsf	\$1.10/sf
<b>Suite 122:</b>	±1,975 rsf	\$1.10/sf
<b>Suite 210:</b>	±4,773 rsf	\$1.45/sf

(Asking Rent is on a Full Service basis)

- Two-Story Building with Elevator
- Attractive, Modern Entryway/Lobby
- Abundant Private Offices
- Monument Signage on State Farm Drive
- Newer Construction
- Abundant Parking
- Three Blocks from Highway 101
- Walking Distance to Professional Services, Restaurants and Public Transportation
- Motivated Landlord!

**Ron Reinking** Managing Director 707.583.8423 [rreinking@ngkf.com](mailto:rreinking@ngkf.com) CA RE License #00931004

**Newmark  
Knight Frank**

2455 Bennett Valley Road , Suite C200, Santa Rosa, CA 95404

[www.ngkf.com](http://www.ngkf.com)

Procuring broker shall only be entitled to a commission, calculated in accordance with the rates approved by our principal only if such procuring broker executes a brokerage agreement acceptable to us and our principal and the conditions as set forth in the brokerage agreement are fully and unconditionally satisfied. Although all information furnished regarding property for sale, rental, or financing is from sources deemed reliable, such information has not been verified and no express representation is made nor is any to be implied as to the accuracy thereof and it is submitted subject to errors, omissions, change of price, rental or other conditions, prior sale, lease or financing, or withdrawal without notice and to any special conditions imposed by our principal.

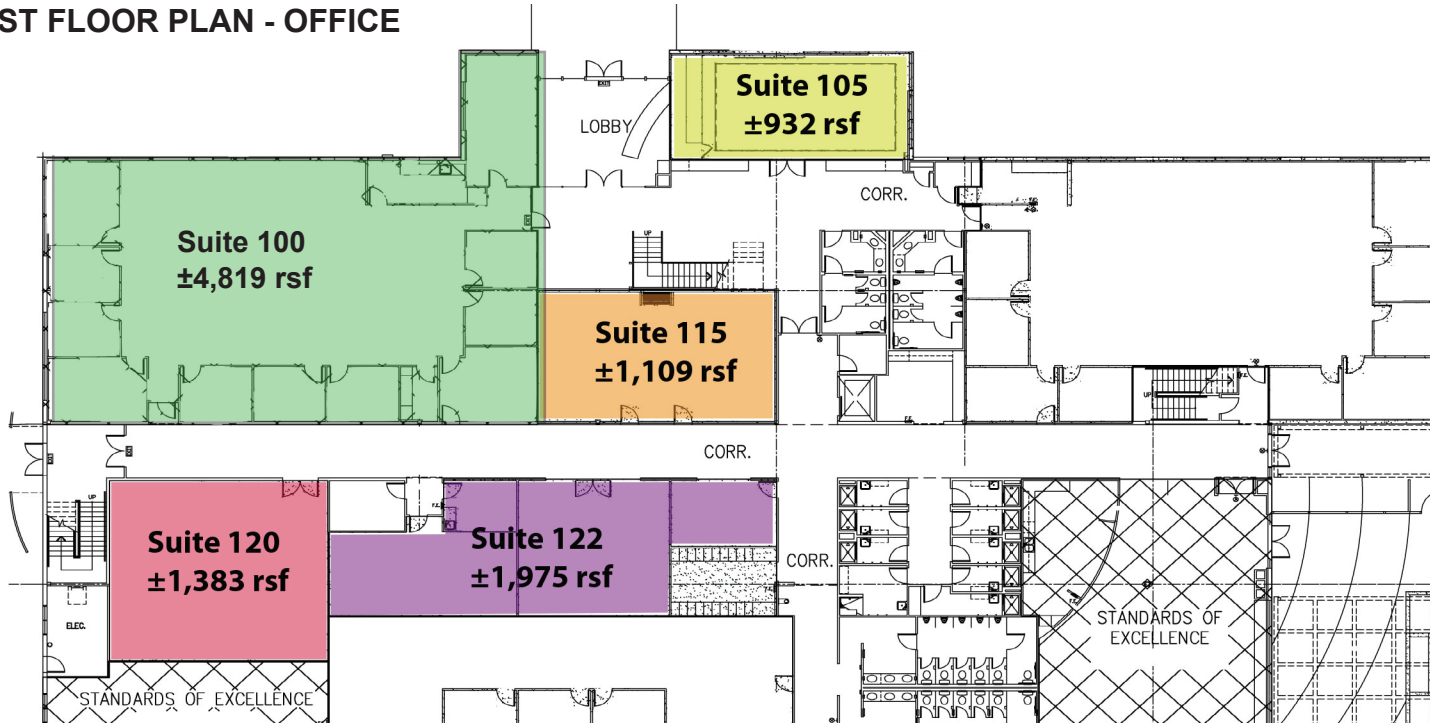
13-1345-04/18

# Office Space For Lease

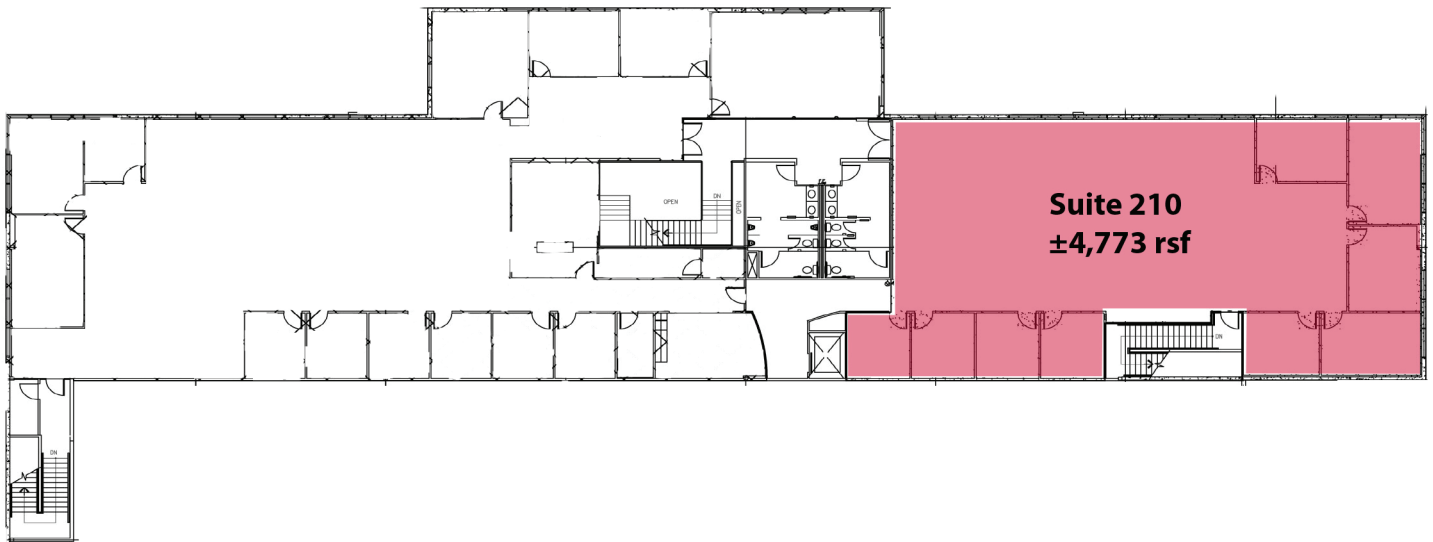
6085 State Farm Drive, Rohnert Park



## 1ST FLOOR PLAN - OFFICE



## 2ND FLOOR PLAN - OFFICE



**Ron Reinking** Managing Director 707.583.8423 [reinking@ngkf.com](mailto:reinking@ngkf.com) CA RE License #00931004

**Newmark  
Knight Frank**

2455 Bennett Valley Road , Suite C200, Santa Rosa, CA 95404

[www.ngkf.com](http://www.ngkf.com)

# Office Space For Lease

6085 State Farm Drive, Rohnert Park



Lobby



Ample Private Offices

Ron Reinking Managing Director 707.583.8423 [reinking@ngkf.com](mailto:reinking@ngkf.com) CA RE License #00931004

**Newmark  
Knight Frank**

2455 Bennett Valley Road , Suite C200, Santa Rosa, CA 95404

[www.ngkf.com](http://www.ngkf.com)