



DEVELOPERS  
DESIGN/BUILDERS

*The power of one.*



## FOR LEASE

145 Parkshore Dr.,  
Folsom, CA 95630

### PROPERTY DETAILS

- Two Story Building - ±49,138 RSF Total
- ±3,236 RSF - Now Available
- Abundant Parking
- Across From the RT Lightrail Extension
- Located in the Popular Lake Forest Tech Center
- Walking distance from retail, childcare, restaurants and recreational amenities
- Minutes from the Highway 50 Interchange

### FOR MORE INFORMATION, PLEASE CONTACT:

**BRUCE HOHENHAUS, SIOR**

*Executive Director*

(916) 288.4804

[bruce.hohenhaus@cushwake.com](mailto:bruce.hohenhaus@cushwake.com)

CA License NO: 00677545

**KRIS KALMBACH**

*Director*

(916) 288.4421

[kris.kalmbach@cushwake.com](mailto:kris.kalmbach@cushwake.com)

CA License NO: 01436668



**CUSHMAN &  
WAKEFIELD**

OFFICES AT  
**PARKSHORE DRIVE**

# 145 PARKSHORE DRIVE | FOLSOM, CA



**FOR MORE INFORMATION,  
PLEASE CONTACT:**

**BRUCE HOHENHAUS, SIOR**

Executive Director  
(916) 288.4804  
bruce.hohenhaus@cushwake.com  
CA License NO: 00677545

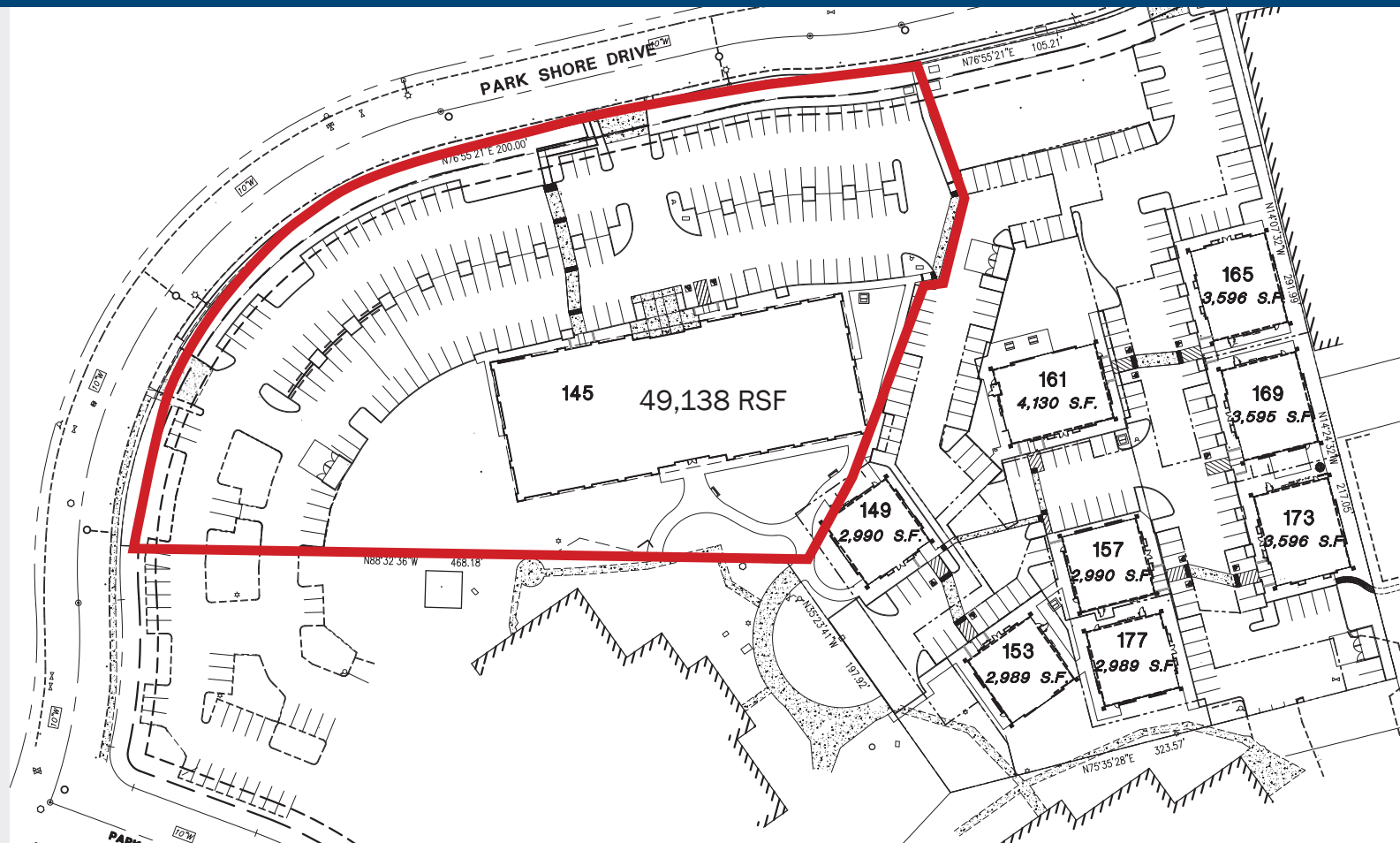
**KRIS KALMBACH**

Director  
(916) 288.4421  
kris.kalmbach@cushwake.com  
CA License NO: 01436668

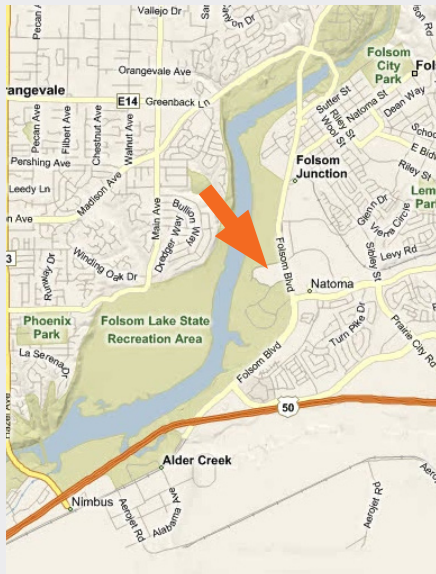


400 Capitol Mall, Suite 1800  
Sacramento, CA 95814  
+1 916 288 4800  
cushmanwakefield.com  
CA License No: 00616335

© Copyright 2018 - Cushman & Wakefield Inc. - All rights reserved. No warranty or representation, express or implied, is made as to the accuracy of the information contained herein, and same is submitted subject to errors omissions, change of price, rental or other conditions, withdrawal without notice, and to any specific listing conditions, imposed by our principals.



## VICINITY MAP



FOR MORE INFORMATION,  
PLEASE CONTACT:

### BRUCE HOHENHAUS, SIOR

Executive Director  
(916) 288.4804  
bruce.hohenhaus@cushwake.com  
CA License NO: 00677545

### KRIS KALMBACH

Director  
(916) 288.4421  
kris.kalmbach@cushwake.com  
CA License NO: 01436668



400 Capitol Mall, Suite 1800  
Sacramento, CA 95814  
+1 916 288 4800  
[cushmanwakefield.com](http://cushmanwakefield.com)  
CA License No: 00616335

© Copyright 2018 - Cushman & Wakefield Inc. - All rights reserved. No warranty or representation, express or implied, is made as to the accuracy of the information contained herein, and same is submitted subject to errors omissions, change of price, rental or other conditions, withdrawal without notice, and to any specific listing conditions, imposed by our principals.

## FIRST FLOOR

# ±3,236 RSF AVAILABLE



# 145 PARKSHORE DRIVE | FOLSOM, CA

