

2209 Jefferson Street, Napa, CA 94559

\$2.00 /SF/Month Gross



±651 SF

- Building Signage
- Nice Natural Light
- 2nd Floor, no elevator
- Central Napa Location
- Large Open Room
- Private Office
- Private Restroom
- Front & Back Door



Cathy D'Angelo Holmes
(707) 304-3338
cholmes@cnapavalley.com
Lic.#01355085

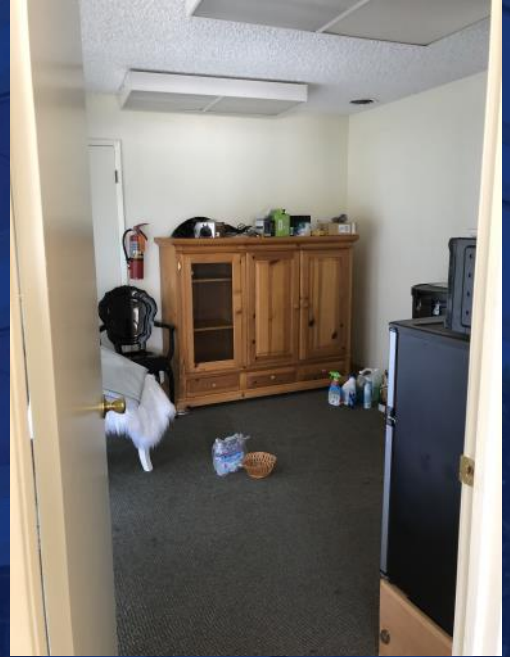
Michael J. Moffett
(707) 479-1976
mmoffett@cnapavalley.com
Lic.#00946472



1040 MAIN ST. #101
NAPA, CA 94559
(707) 224-8454

NAPACOMMERCIALPROPERTIES.COM

AVAILABLE FOR LEASE



Floor Plan

