



4.7 MILLION
RSF



LARGEST PLANNED
DEVELOPMENT IN THE
NJ/NY PORT REGION

LINDENLOGISTICSCENTER.COM

LOGISTICS.
LEVERAGED.

LINDEN LOGISTICS CENTER is a 4.1 million square foot multi-building Class A warehouse development in one of the nation's most vibrant industrial markets. With access to a vast workforce, modern distribution tenants will have a surplus of quality labor at their doorstep. This ideal location is in proximity to one of the world's most concentrated and affluent consumer bases and the city of Linden has agreed to stabilize real estate taxes through a PILOT program.

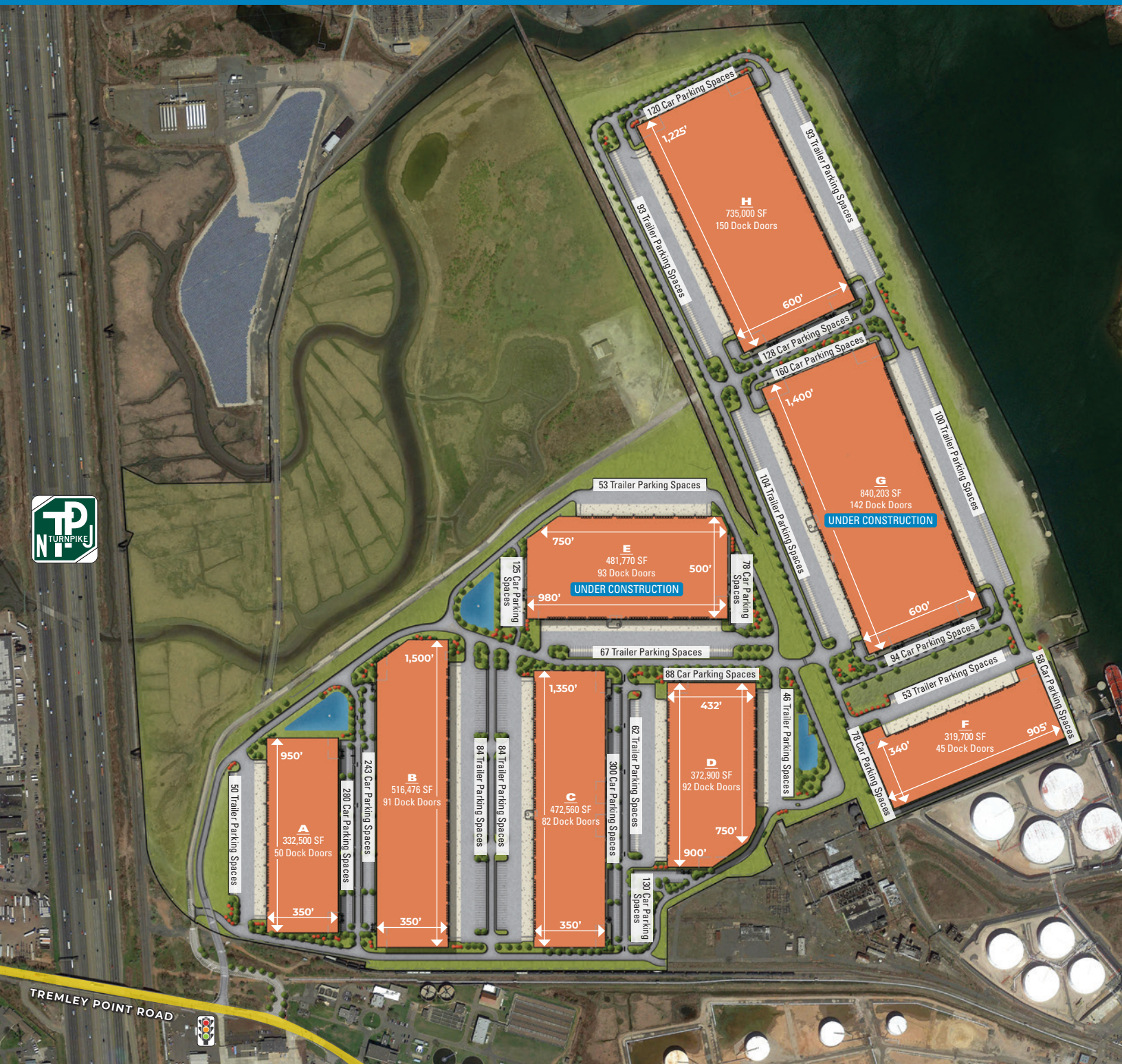
PAYMENT IN LIEU OF TAXES (PILOT) PROGRAM

- 30 year below market tax
- Statutory minimum for PILOT



LARGEST PLANNED DEVELOPMENT IN THE NJ/NY PORT REGION

- Linden Logistics Center is a 4.1 million square-foot master planned industrial development
- Designed with logistics customers in mind, this 8 building park provides the flexibility modern users demand



CENTER OF A PREMIER MARKET

- Strategically located in one of the most vibrant industrial hubs in the U.S.
- Surrounded by state-of-the-art infrastructure that includes interstate highways, deepwater cargo ports, airports, and rail



INTERNATIONAL AIRPORT

Newark Liberty International Airport (EWR) is less than 15 minutes away via I-95

RAIL ACCESS

Linden Logistics Center offers the possibility of a rail served facility for inbound and outbound freight

INTERNATIONAL SEAPORT

- Toll-free access from Linden Logistics Center
- Port Newark-Elizabeth Marine Terminal is just 8 miles away
- Largest and busiest container terminal on U.S. East Coast
- Third-largest port in the U.S.



REGIONAL
CONNECTIVITY
VIA I-95 AND I-78



8 MILES FROM PORT
NEWARK-ELIZABETH
MARINE TERMINAL



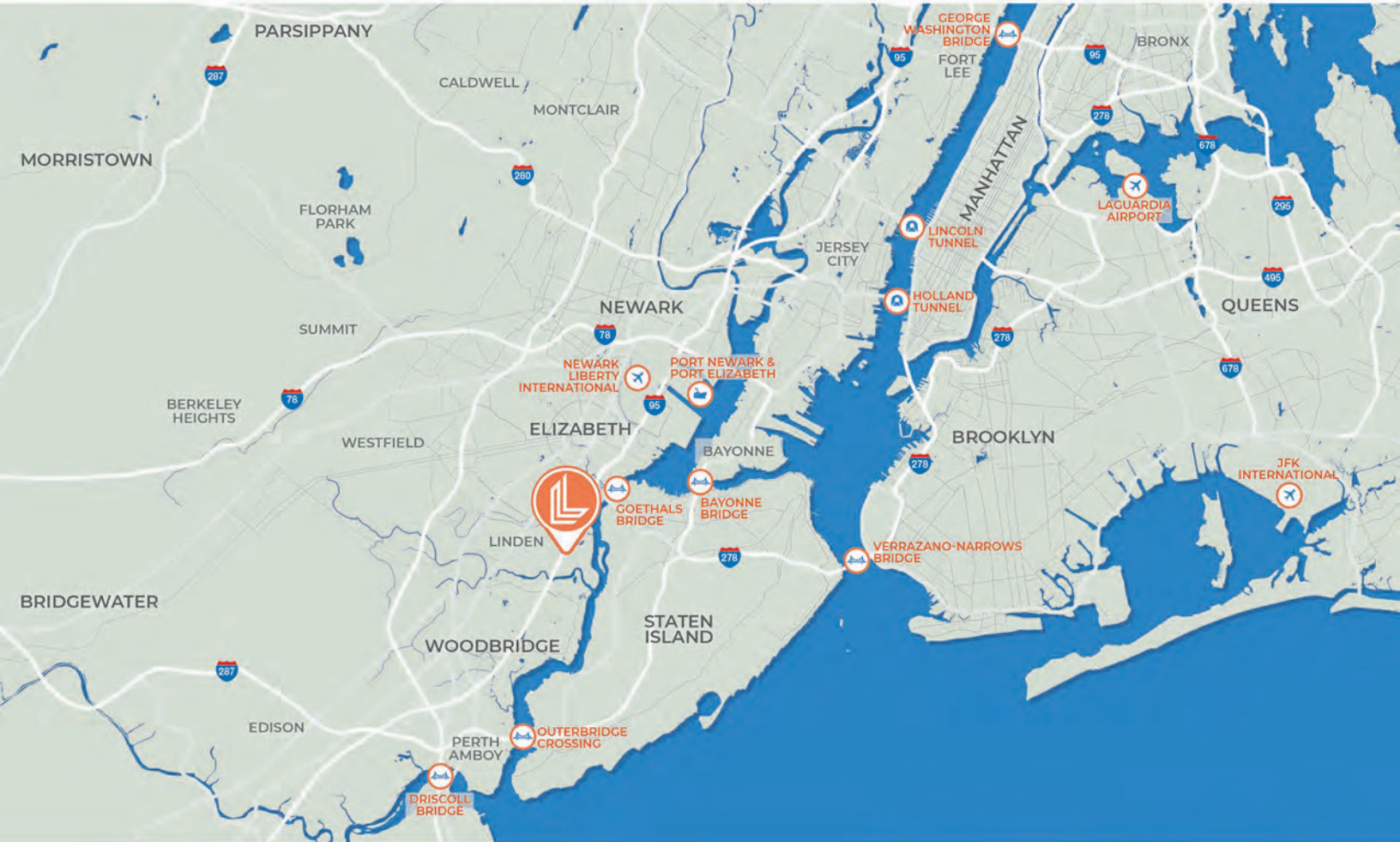
9 MILES FROM NEWARK
LIBERTY INTERNATIONAL
AIRPORT



ACCESS
TO RAIL

EXPLORE THE EASE OF ACCESS

- Conveniently located between New York City and Philadelphia
- Offers access to more than 100 million consumers within a single day's reach



INTERSTATE HIGHWAYS

- Alongside the New Jersey Turnpike/I-95
- Provides quick access to I-278 which traverses through all five boroughs of New York City and I-78
- Multiple U.S. states and other major cities can be reached within a few hours



GATEWAY TO THE NORTHEAST



THE PORT

The Port of New York and New Jersey is the gateway to one of the most concentrated and affluent consumer markets in the world

Linden Logistics Center is located 10 miles from Port Newark-Elizabeth



LABOR

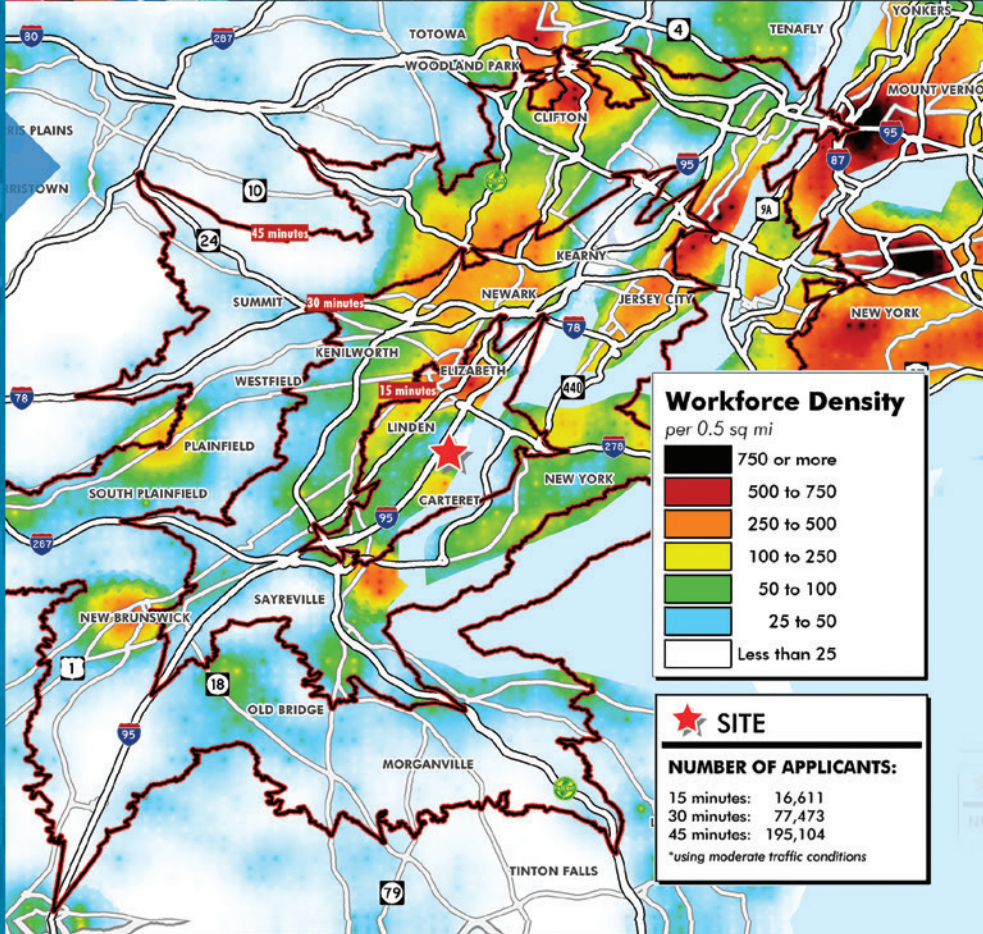
Linden Logistics Center provides an abundant and qualified labor force



Linden is outpacing most nearby submarkets with a projected population growth of 0.71%



Blue Collar Employment is at a healthy 20.4% in Linden





EXCLUSIVE AGENT
CBRE

Mindy Lissner
Executive Vice President
+1 732 509 5231
mindy.lissner@cbre.com

William Waxman
Executive Vice President
+1 201 712 5812
william.waxman@cbre.com

Kevin Dudley
Senior Vice President
+1 201 712 5837
kevin.dudley@cbre.com

Steven Beyda
Senior Vice President
+1 732 509 2812
steven.beyda@cbre.com

David Gheriani
First Vice President
+1 732 509 8942
david.gheriani@cbre.com

Robert Pine
Vice President
+1 732 509 2830
robert.pine@cbre.com

A DEVELOPMENT PARTNERSHIP BY



ADVANCE
REALTY INVESTORS



GREEK
DEVELOPMENT

No warranty or representation, express or implied is made as to the accuracy of the information contained herein, and same is submitted subject to errors, omissions, change of price, rental or other conditions, withdrawal without notice and to any special listing conditions imposed.