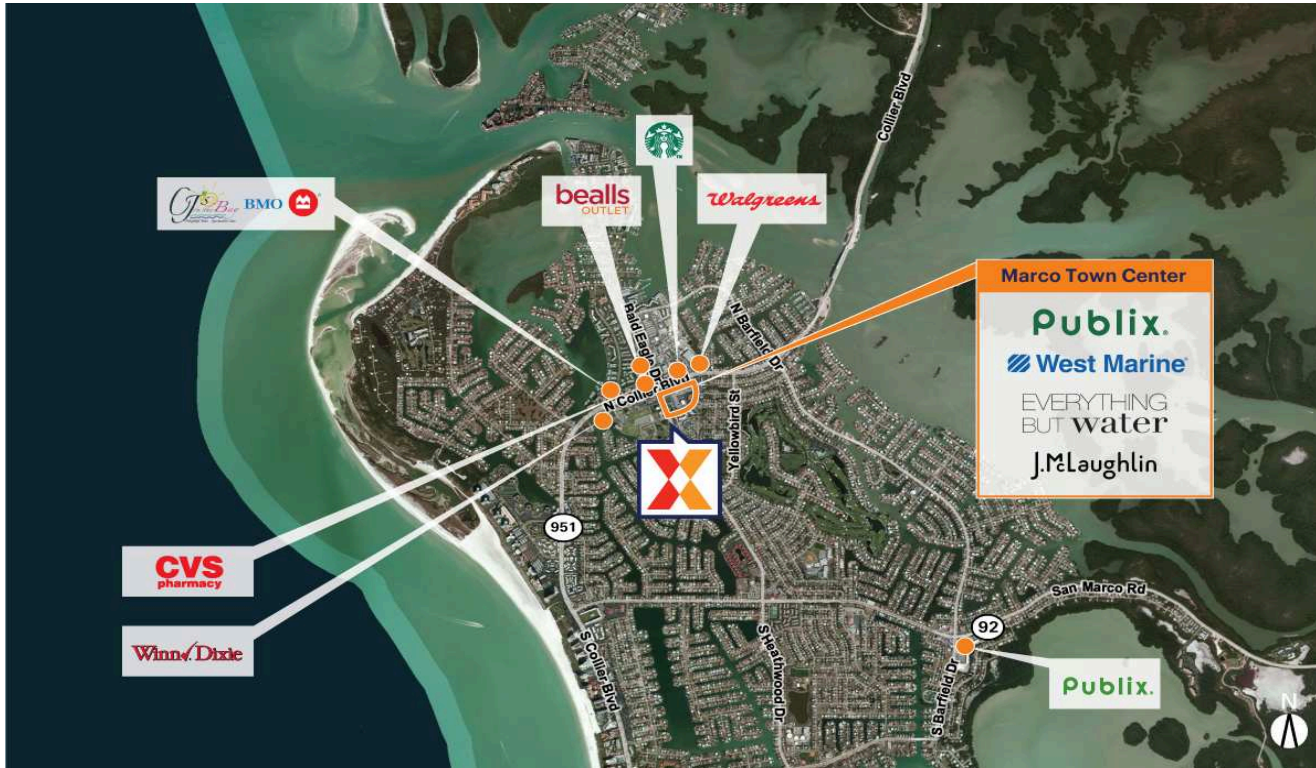


# Marco Town Center

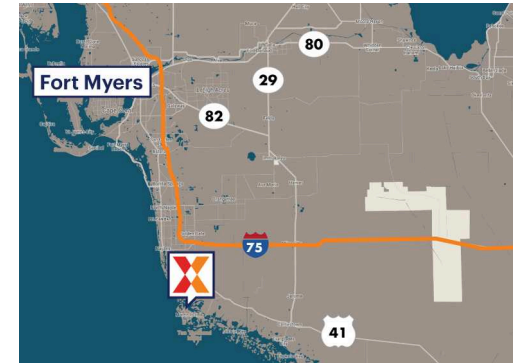
Naples-Marco Island, FL

25.9541, -81.7235

1017 N. Collier Blvd. | Marco Island, FL 34145



Center Size: 109,745 SF



Demographics	1 Mile	3 Mile	5 Mile
	5,242	16,854	21,070
	2,496	8,416	10,445
	\$116,749	\$122,180	\$123,053

Strategically located on the main thoroughfare Collier Blvd

Surrounded by affluent population with an average household income of \$122,000+ within a 3-mile radius

Anchored by Publix, the area's dominant grocer, along with a diverse mix of retail, dining and services

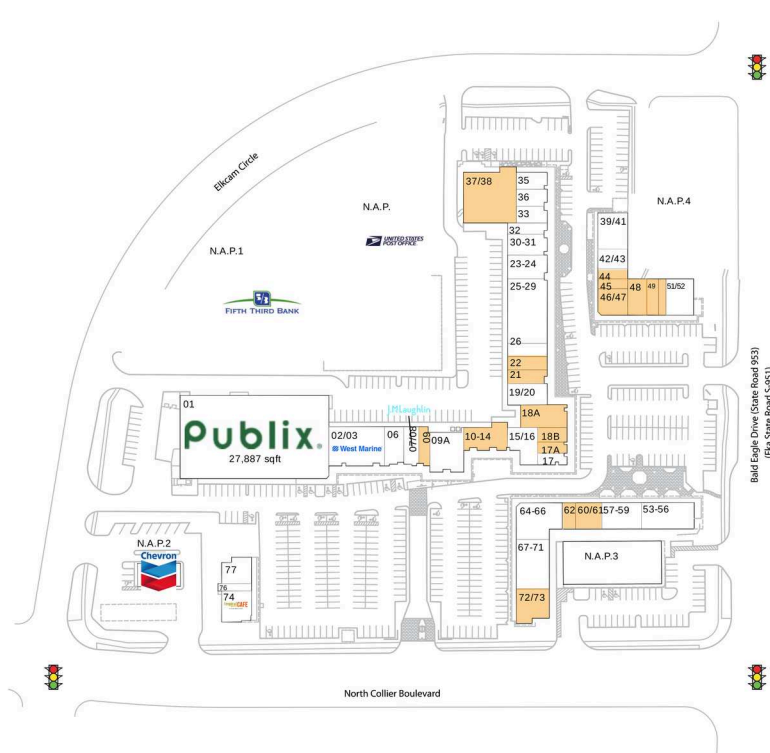
Seasonal population of 40,000+

# Marco Town Center

Naples-Marco Island, FL

25.9541, -81.7235

1017 N. Collier Blvd. | Marco Island, FL 34145



## Available Space

09	960 SF
10-14	2,550 SF
17A	800 SF
18A	1,300 SF
18B	1,299 SF
21	1,200 SF
22	1,200 SF
37/38	6,120 SF
44	675 SF
45	675 SF
46/47	2,025 SF
48	1,600 SF
49	1,000 SF
50	600 SF
60/61	1,600 SF
62	800 SF
72/73	2,250 SF

## Current Retailers

N.A.P.	United States Post Office	400 SF	26	Jackie's Chinese Restaurant	1,200 SF
N.A.P.1	Fifth Third Bank	0 SF	30-31	Marco Players	1,920 SF
N.A.P.2	Chevron	0 SF	32	Supercuts	960 SF
N.A.P.3	Alvin's Island	0 SF	33	Elite Nails	1,150 SF
N.A.P.4	Iberia Bank	0 SF	35	Dunkin' Donuts	1,505 SF
01	Publix	27,887 SF	36	Premier Plus Realty	831 SF
02/03	West Marine	4,956 SF	39/41	Crazy Flamingo	2,250 SF
06	The UPS Store	1,740 SF	42/43	Island Time	1,350 SF
07/08	J. McLaughlin	1,200 SF	51/52	Thai Thai Sushi Bowl	2,300 SF
09A	Everything But Water	3,000 SF	53-56	Margarita's	3,200 SF
15/16	Noire The Nail Bar	1,911 SF	57-59	Summer Day Market & Cafe	2,400 SF
17	Blue Mangrove Gallery	1,410 SF	64-66	Beachworks	3,550 SF
19/20	Point Florida Hardware Store	2,400 SF	67-71	Sandpiper Loft	3,750 SF
23-24	Marco Players	2,350 SF	74	Tropical Smoothie Cafe	1,671 SF
25-29	Marco Island Brewery	5,480 SF	76	Island Cigars	720 SF
			77	Publix Liquor	1,600 SF