



1315 Gillingham Road

Neenah, WI.

Very-well maintained, single-story with shop/warehouse located just off of Interstate 41 and Breezewood Lane in Neenah, WI on the west frontage road with interstate exposure.

Modern one-story office building with production and shop area. Majority of front area of building is office space with several partitioned offices, restrooms, training and sales area. The back section has a shop and warehouse (5,000 SF) with a loading dock/overhead drive-in door.

Office furniture may be included. Expandable to the south.

Large lot for future expansion

PRICE	\$1,750,000
LEASE RATE	\$10/SF NNN
BUILDING SIZE	20,000 SF
OFFICE	APPROX. 15,000 SF
WAREHOUSE SIZE	APPROX. 5,000 SF
ACRES	1.835
YEAR BUILT	1989
PARKING	100+ STALLS
ZONING	C-1 COMMERCIAL
EAVE HEIGHT	16' AND 18'
2019 TAXES	\$20,663.86

For more information:

Bob Rossi

920.560.5065 • bobr@naipfefferle.com

(updated 10.1.2020)

THE INFORMATION CONTAINED HEREIN WAS OBTAINED FROM SOURCES BELIEVED RELIABLE, HOWEVER, NAI PFEFFERLE MAKES NO GUARANTEES, WARRANTIES, OR REPRESENTATIONS AS TO THE COMPLETENESS OR ACCURACY THEREOF. THE PRESENTATION OF THIS PROPERTY IS SUBMITTED SUBJECT TO ERRORS, OMISSION, CHANGE OF PRICE OR OTHER CONDITIONS, PRIOR SALE OR LEASE, OR WITHDRAWAL WITHOUT NOTICE.

200 E. Washington Street, Suite 2A

Appleton, WI 54911

920.968.4700

naipfefferle.com

For Sale or Lease
 1315 Gillingham Road
 Neenah, WI.

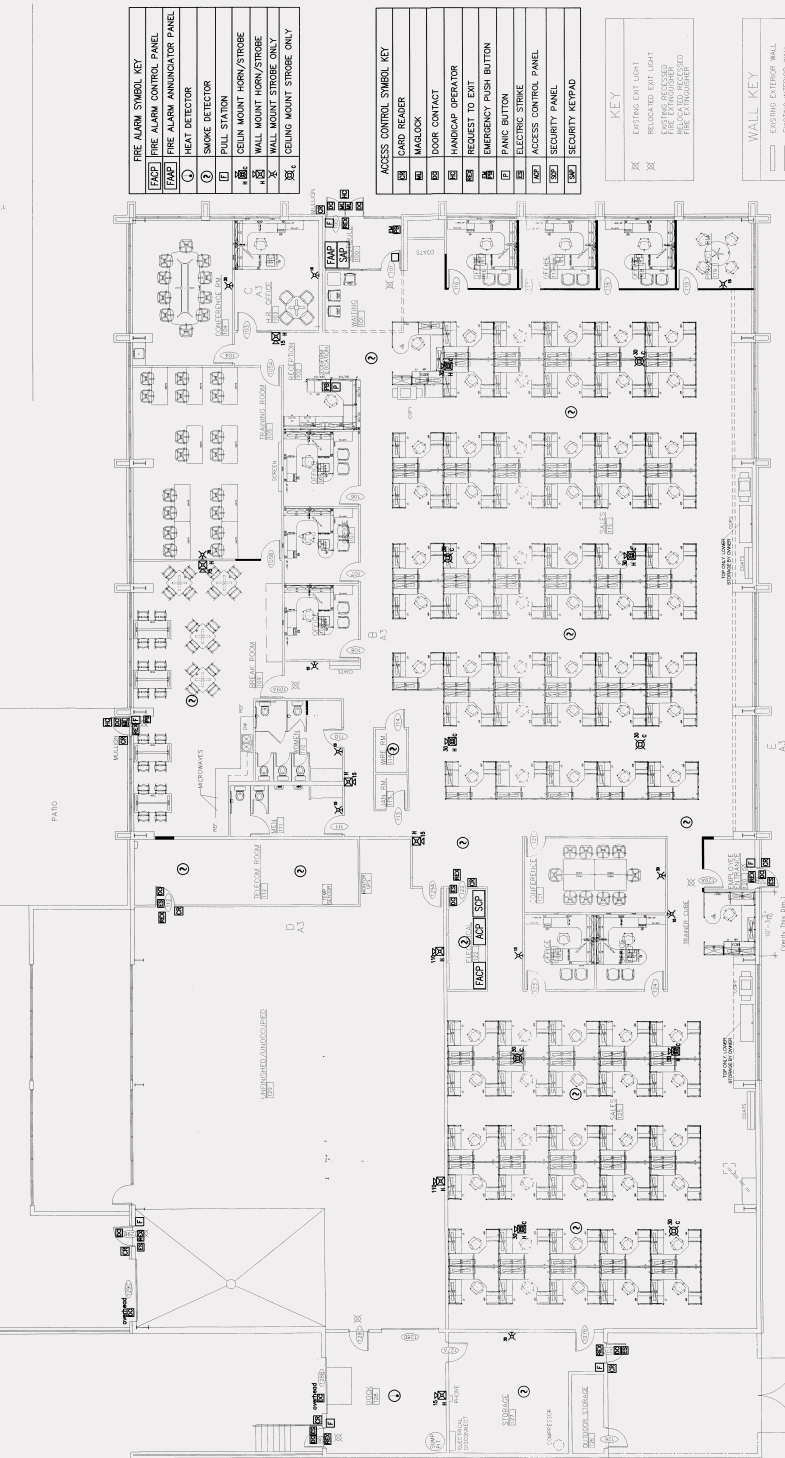
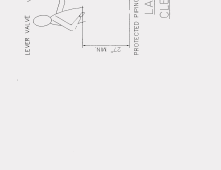
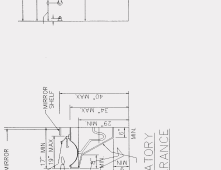
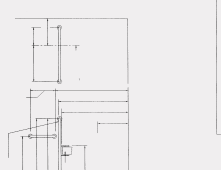
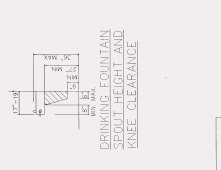
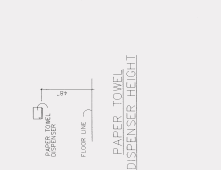
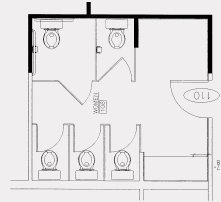
DATE: 07/02/08
 SHEET: A2
 CONTRACT NO: 38075
 PRELIMINARY NO: 00000000
 SUPERVISOR: [blank]
 EXPEDITOR: [blank]
 DRAWN BY: [blank]
 ARCHITECT: S. ALEBIC
 PROJECT MANAGER: S. ALEBIC

JJ KELLER
 WISCONSIN

OFFICE ALTERATIONS FOR:

"COPYRIGHT NOTICE"
 This drawing is the property of JJ Keller, Inc. and is not to be reproduced, stored in a retrieval system, or transmitted in any form or by any means, electronic, mechanical, photocopying, recording, or by any information storage and retrieval system, without the prior written permission of JJ Keller, Inc.

SCALE: 1/8" = 1'-0"
 08-20-08
 "ISSUED FOR CONSTRUCTION"



FIRE ALARM SYMBOL KEY

FA1	FIRE ALARM CONTROL PANEL
FA2	FIRE ALARM ANNUNCIATOR PANEL
FD	HEAT DETECTOR
SD	SMOKE DETECTOR
PS	PULL STATION
MS	MELN MOUNT HORN/STROBE
MS1	WALL MOUNT STROBE ONLY
MS2	CEILING MOUNT STROBE ONLY

ACCESS CONTROL SYMBOL KEY

AC1	CARD READER
AC2	MAGLOCK
AC3	DOOR CONTACT
AC4	HANDCAP OPERATOR
AC5	REQUEST TO EXIT
AC6	EMERGENCY PUSH BUTTON
AC7	PANIC BUTTON
AC8	ELECTRIC STRIKE
AC9	ACCESS CONTROL PANEL
AC10	SECURITY PANEL

KEY

X	EXISTING EMT LIGHT
X	RELOCATED EXIT LIGHT
X	FIRE EXTINGUISHER
X	FIRE EXTINGUISHER
X	FIRE EXTINGUISHER

WALL KEY

---	EXISTING EXTERIOR WALL
---	EXISTING INTERIOR WALL
---	NEW EXTERIOR WALL
---	NEW INTERIOR WALL
---	NEW INTERIOR PARTITION

PROPOSED BASE BID FLOOR PLAN



For Sale or Lease
1315 Gillingham Road
Neenah, WI.



200 E. Washington Street, Suite 2A
Appleton, WI 54911
920.968.4700

NAIPfefferle

naipfefferle.com

For Sale or Lease
1315 Gillingham Road
Neenah, WI.



For Sale or Lease
1315 Gillingham Road
Neenah, WI.



MAIN SIGN FACING I-41



MAIN ENTRY - EAST SIDE



DOCK AREA - NW CORNER OF BUILDING



LOOKING SOUTH FROM PARKING LOT



LOOKING NORTH FROM PARKING LOT



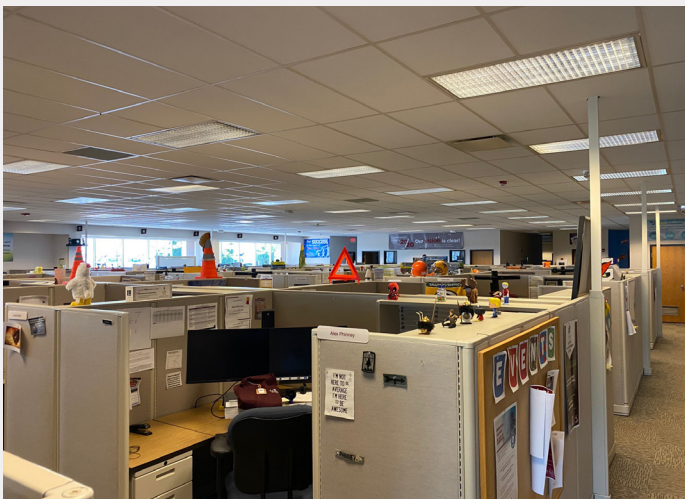
MAIN ENTRY

200 E. Washington Street, Suite 2A
Appleton, WI 54911
920.968.4700

naipfefferle.com

NAIPfefferle

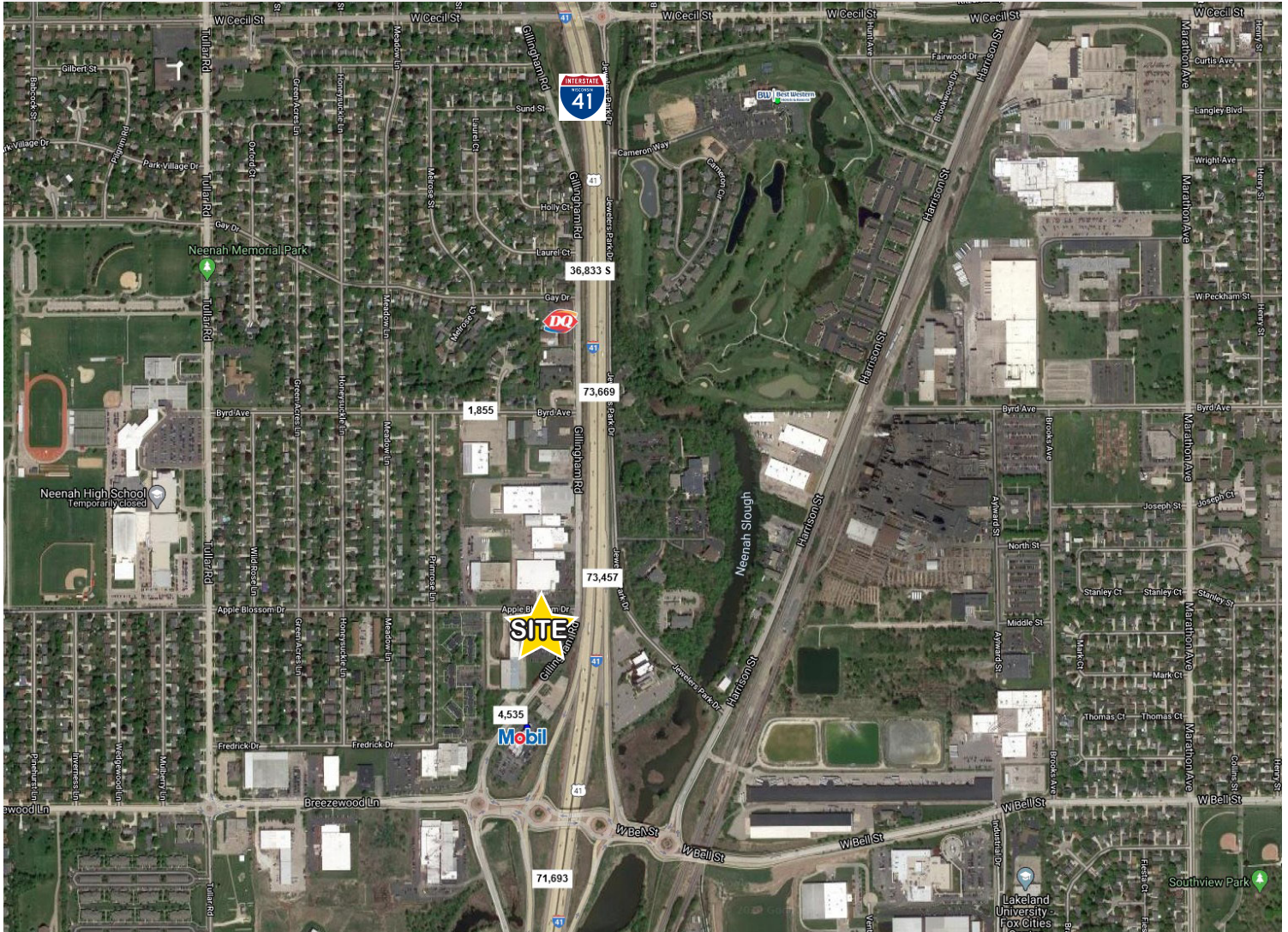
For Sale or Lease
1315 Gillingham Road
Neenah, WI.



200 E. Washington Street, Suite 2A
Appleton, WI 54911
920.968.4700

naipfefferle.com

For Sale or Lease
1315 Gillingham Road
Neenah, WI.



2019 Demographics

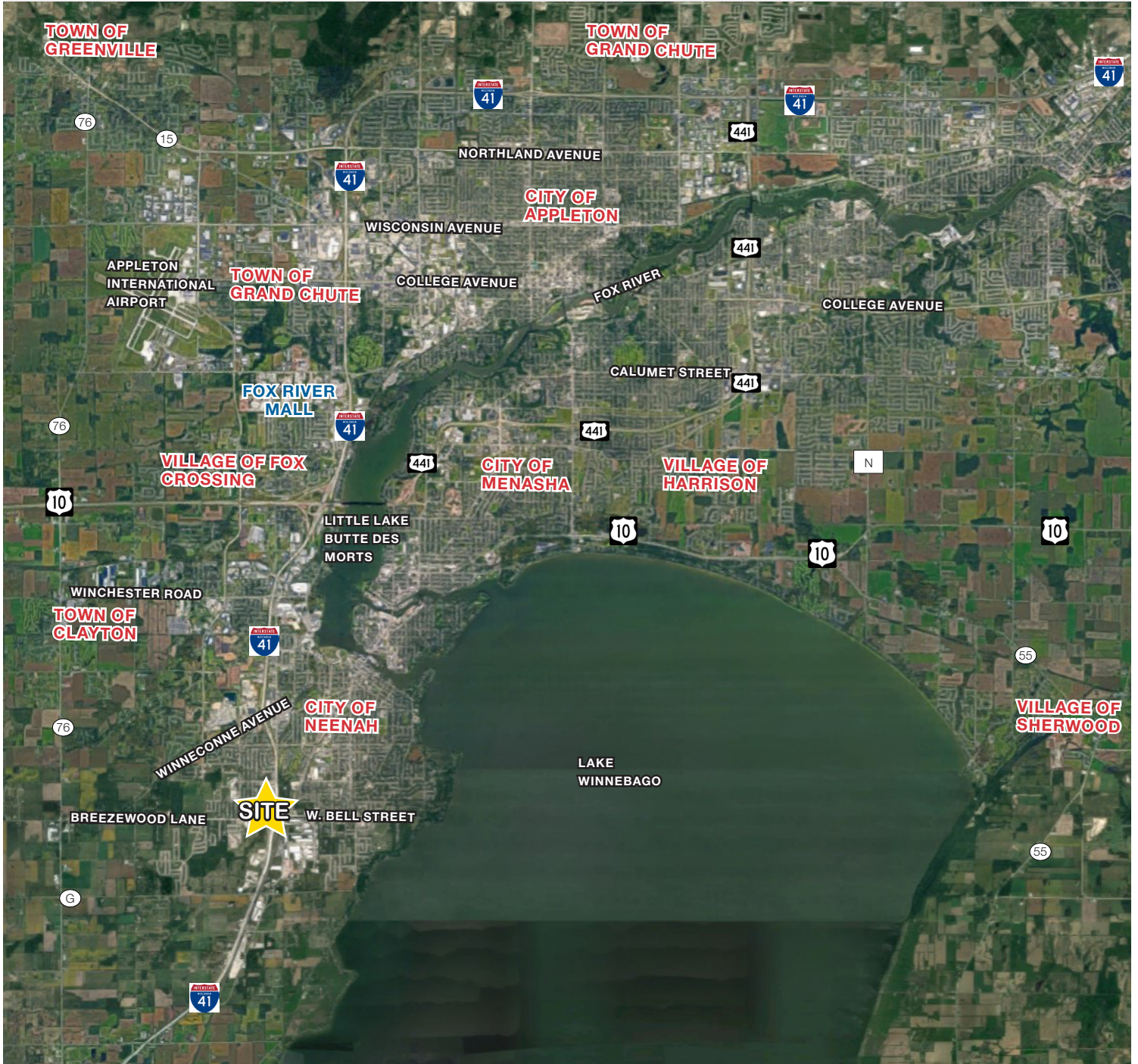
	1 Mile	3 Miles	5 Miles
Population	7,239	32,090	54,546
Average Household Income	\$70,643	\$89,971	\$109,223
Total Households	3,195	13,27	23,695
Total Employees	4,814	23,189	34,195
Total Businesses	234	1,424	2,141

200 E. Washington Street, Suite 2A
 Appleton, WI 54911
 920.968.4700



naipfefferle.com

For Sale or Lease
1315 Gillingham Road
Neenah, WI.



200 E. Washington Street, Suite 2A
Appleton, WI 54911
920.968.4700

naipfefferle.com

STATE OF WISCONSIN BROKER DISCLOSURE



Wisconsin law requires all real estate licensees to give the following information about brokerage services to prospective customers.

Prior to negotiating on your behalf the Brokerage firm, or an agent associated with the firm, must provide you the following disclosure statement.

Disclosure to Customers

You are a customer of NAI Pfefferle (hereinafter Firm). The Firm is either an agent of another party in the transaction or a subagent of another firm that is the agent of another party in the transaction. A broker or a salesperson acting on behalf of the Firm may provide brokerage services to you. Whenever the Firm is providing brokerage services to you, the Firm and its brokers and salespersons (hereinafter Agents) owe you, the customer, the following duties:

- The duty to provide brokerage services to you fairly and honestly.
- The duty to exercise reasonable skill and care in providing brokerage services to you.
- The duty to provide you with accurate information about market conditions within a reasonable time if you request it, unless disclosure of the information is prohibited by law.
- The duty to disclose to you in writing certain Material Adverse Facts about a Property, unless disclosure of the information is prohibited by law.
- The duty to protect your confidentiality. Unless the law requires it, the Firm and its Agents will not disclose your confidential information or the confidential information of other parties.
- The duty to safeguard trust funds and other property held by the Firm or its Agents.
- The duty, when negotiating, to present contract proposals in an objective and unbiased manner and disclose the advantages and disadvantages of the proposals.

Please review this information carefully. An Agent of the Firm can answer your questions about brokerage services, but if you need legal advice, tax advice, or a professional home inspection, contact an attorney, tax advisor, or home inspector. This disclosure is required by section 452.135 of the Wisconsin statutes and is for information only. It is a plain-language summary of the duties owed to a customer under section 452.133(1) of the Wisconsin statutes.

Confidentiality Notice to Customers

The Firm and its Agents will keep confidential any information given to the Firm or its Agents in confidence, or any information obtained by the Firm or its Agents that a reasonable person would want to be kept confidential, unless the information must be disclosed by law or you authorize the Firm to disclose particular information. The Firm and its Agents shall continue to keep the information confidential after the Firm is no longer providing brokerage services to you.

No representation is made as to the legal validity of any provision or the adequacy of any provision in any specific transaction.

The following information is required to be disclosed by law:

1. Material Adverse Facts, as defined in section 452.01(5g) of the Wisconsin Statutes (see definition below).
2. Any facts known by the Firm or its Agents that contradict any information included in a written inspection report on the property or real estate that is the subject of the transaction.

To ensure that the Firm and its Agents are aware of what specific information you consider confidential, you may list that information below or provide that information to the Firm or its Agents by other means. At a later time, you may also provide the Firm or its Agents with other information you consider to be confidential.

CONFIDENTIAL INFORMATION

NON-CONFIDENTIAL INFORMATION

(the following information may be disclosed to the Firm and its Agents)

(Insert information you authorize to be disclosed, such as financial qualification information.)

Definition of Material Adverse Facts

A “Material Adverse Fact” is defined in Wis. Stat. 452.01(5g) as an Adverse Fact that a party indicates is of such significance, or that is generally recognized by a competent licensee as being of such significance to a reasonable party, that it affects or would affect the party’s decision to enter into a contract or agreement concerning a transaction or affects or would affect the party’s decision about the terms of such a contract or agreement.

An “Adverse Fact” is defined in Wis. Stat. 452.01(1e) as a condition or occurrence that a competent licensee generally recognizes will significantly and adversely affect the value of the property, significantly reduce the structural integrity of improvements to real estate, or present a significant health risk to occupants of the property; or information that indicates that a party to a transaction is not able to or does not intend to meet his or her obligations under a contract or agreement made concerning the transaction.

Notice About Sex Offender Registry

You may obtain information about the sex offender registry and persons registered with the registry by contacting the Wisconsin Department of Corrections on the Internet at <http://www.doc.wi.gov> or by telephone at 608-240-5830.