

# Cornelius Retail Center

1882—1886 Baseline Street, Cornelius, OR 97113

View  
Online:



This strip center is located between Baseline Road and N Adair Street just down from Fred Meyer and Walgreens. Neighboring tenants include Starbucks with drive-thru, Little Caesars and Tendercare Dental. The property is easy to access, has parking and very visible building signage. Average daily traffic on Baseline is 15,700 cars per day.



**Available:**

**Suite 1884—1,350 SF**

**\$18.50 SF/Year, NNN**

**Demographics**

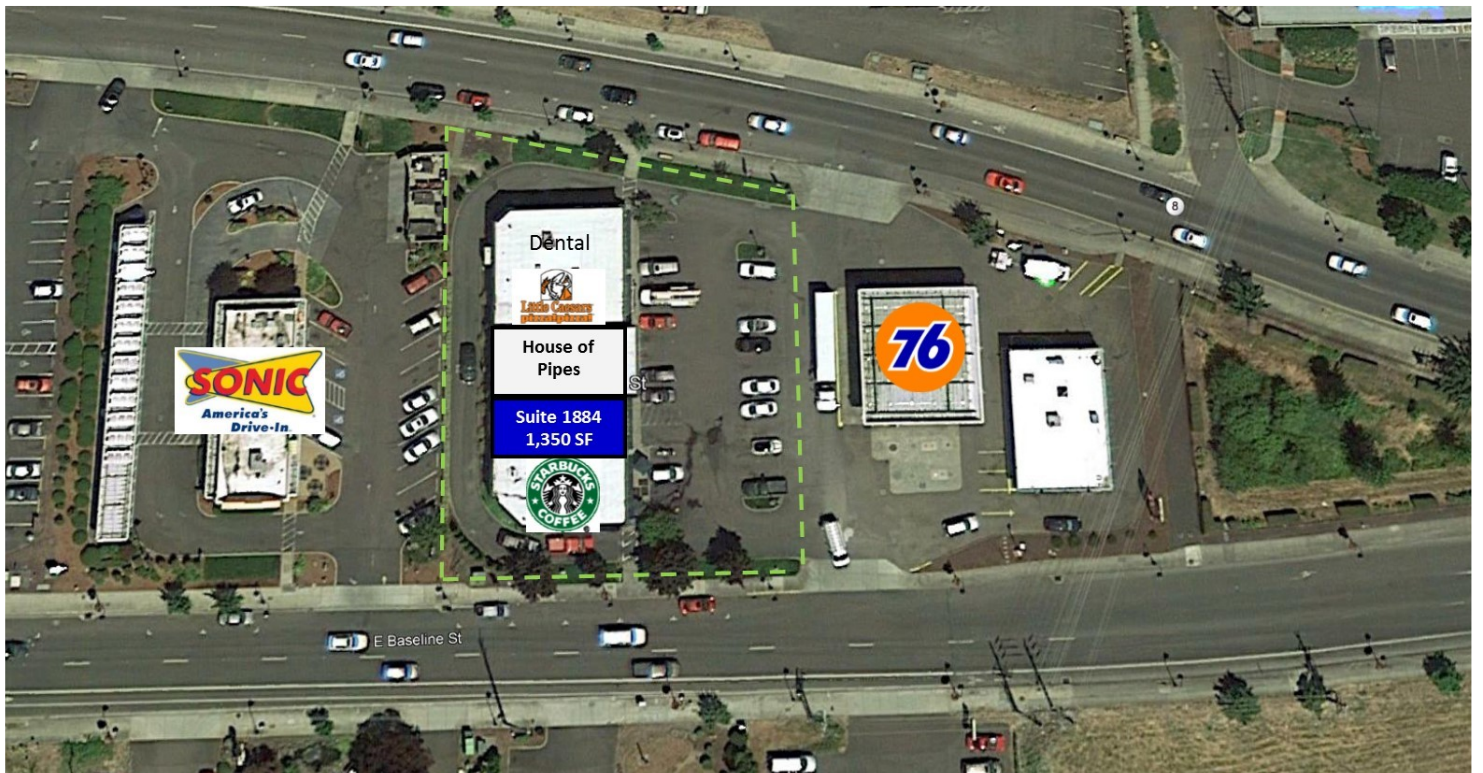
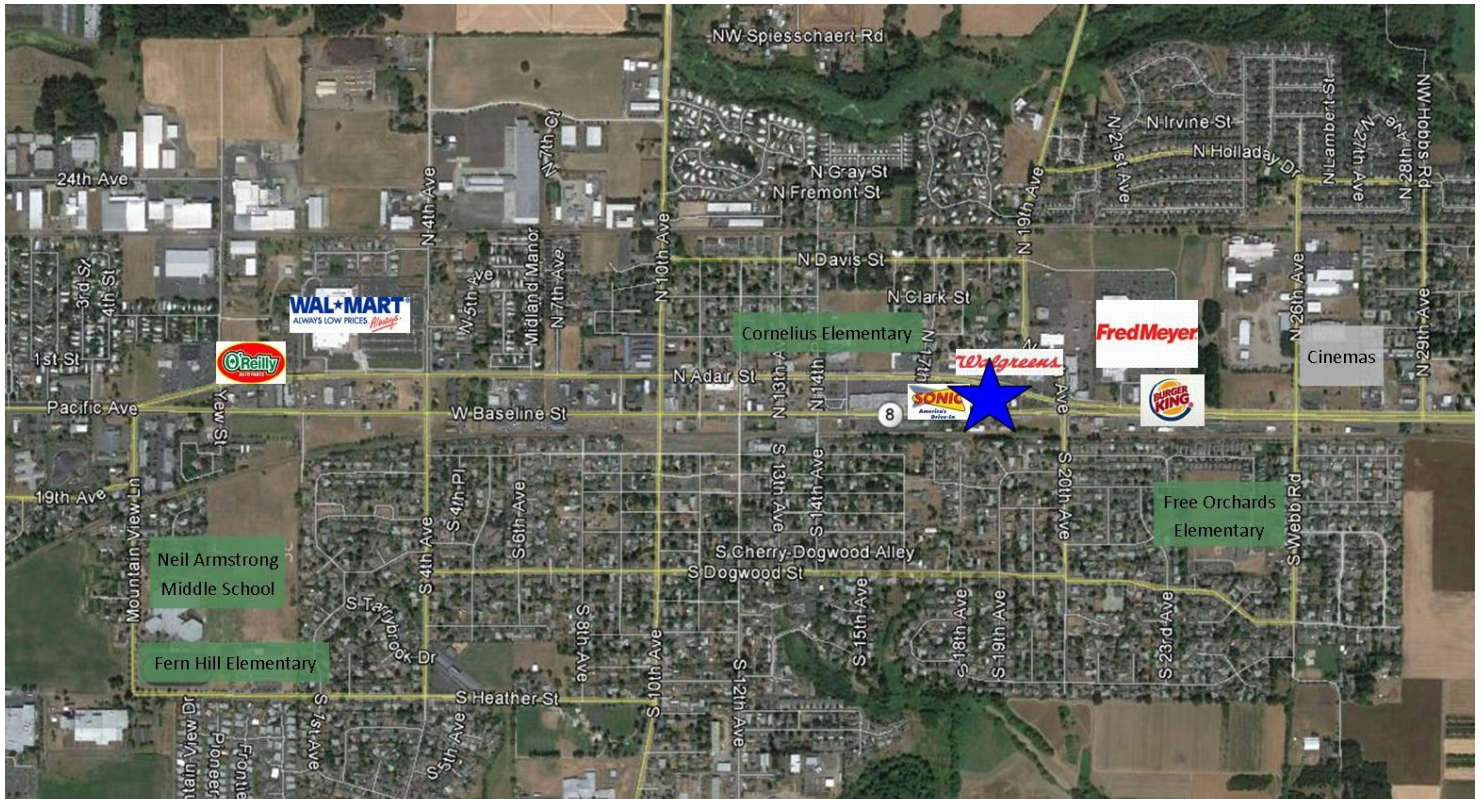
	1 Mile	3 Mile	5 Mile
<b>Population:</b>	11,926	34,075	91,350
<b>Average HH Income:</b>	\$69,280	\$68,241	\$81,416



503.675.0900 O | Paul Miller | 503.616.2943 D | Email: paul@barnardcommercial.com  
www.barnardcommercial.com | Mail: 6650 SW Redwood Lane, Suite 330, Portland OR 97224

# Cornelius Retail Center

**Barnard Commercial**  
Real Estate



503.675.0900 O | Paul Miller | 503.616.2943 D | Email: [paul@barnardcommercial.com](mailto:paul@barnardcommercial.com)  
[www.barnardcommercial.com](http://www.barnardcommercial.com) | Mail: 6650 SW Redwood Lane, Suite 330, Portland OR 97224