

FOR LEASE

HILLTOP BUSINESS CENTER

7300-7360 SW HUNZIKER ROAD :: PORTLAND, OR 97223



Excellent Value at Competitive Rates

- Visit property website at WWW.CBRE.COM/HILLTOP
- Professional office space in a campus environment
- \$18.50/SF, Full Service
- Access to Tri-Met Transit, U.S. Hwy 217 and Interstate 5
- On-site Hilltop Cafe food service & catering and conference facility
- Two miles to Washington Square, Regional Shopping Center

FOR MORE
INFORMATION
PLEASE
CONTACT

Shawn Adams

T 503.221.4841

shawn.adams@cbre.com | www.cbre.com/shawn.adams
Licensed in the State of Oregon

CBRE

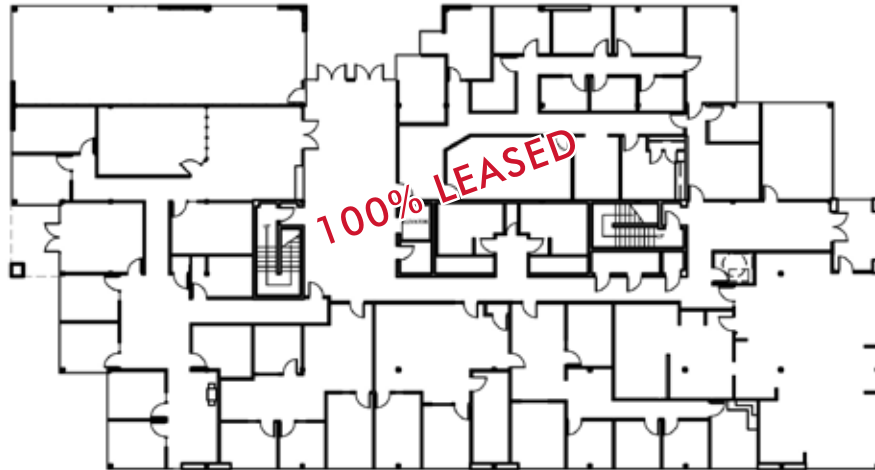
FOR LEASE

HILLTOP BUSINESS CENTER

7300-7360 SW HUNZIKER ROAD :: PORTLAND, OR 97223

7320 SW Hunziker

1ST FLOOR



2ND FLOOR



3RD FLOOR

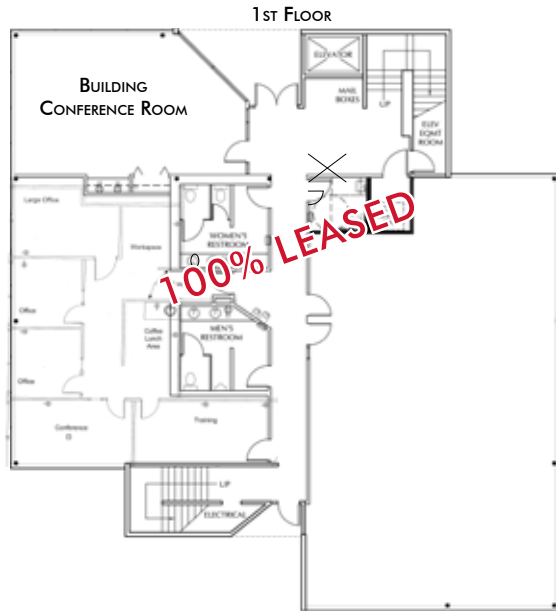


FOR LEASE

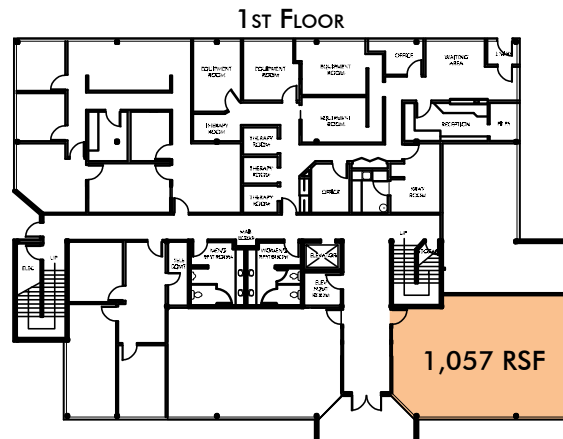
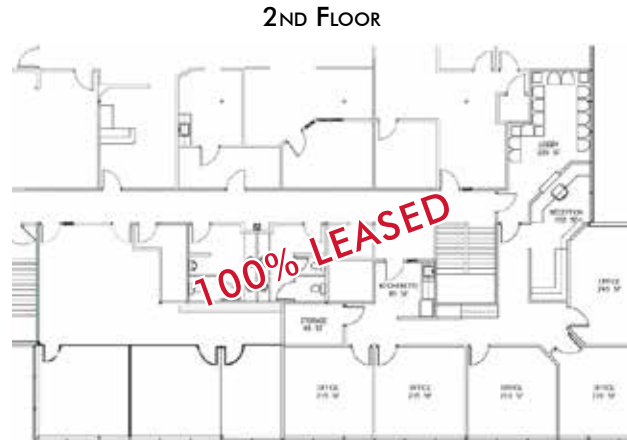
HILLTOP BUSINESS CENTER

7300-7360 SW HUNZIKER ROAD :: PORTLAND, OR 97223

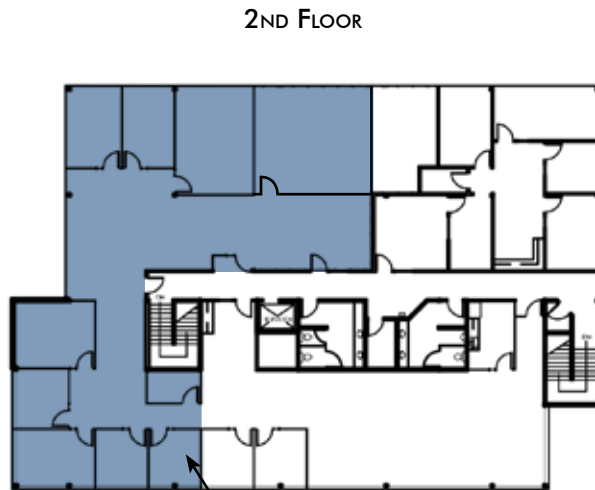
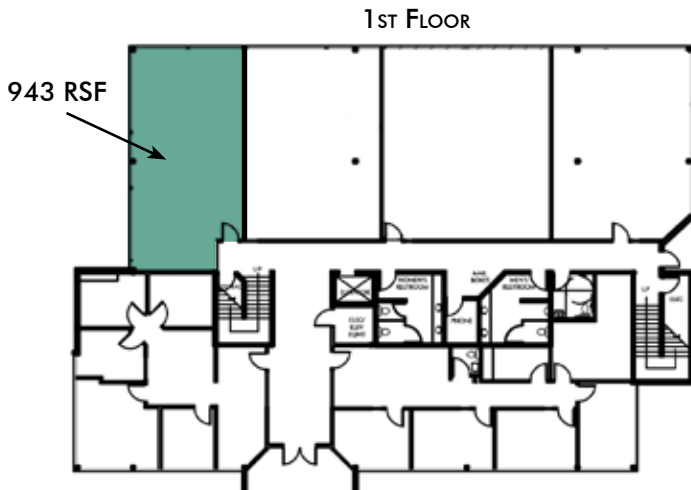
7300 SW Hunziker



7340 SW Hunziker



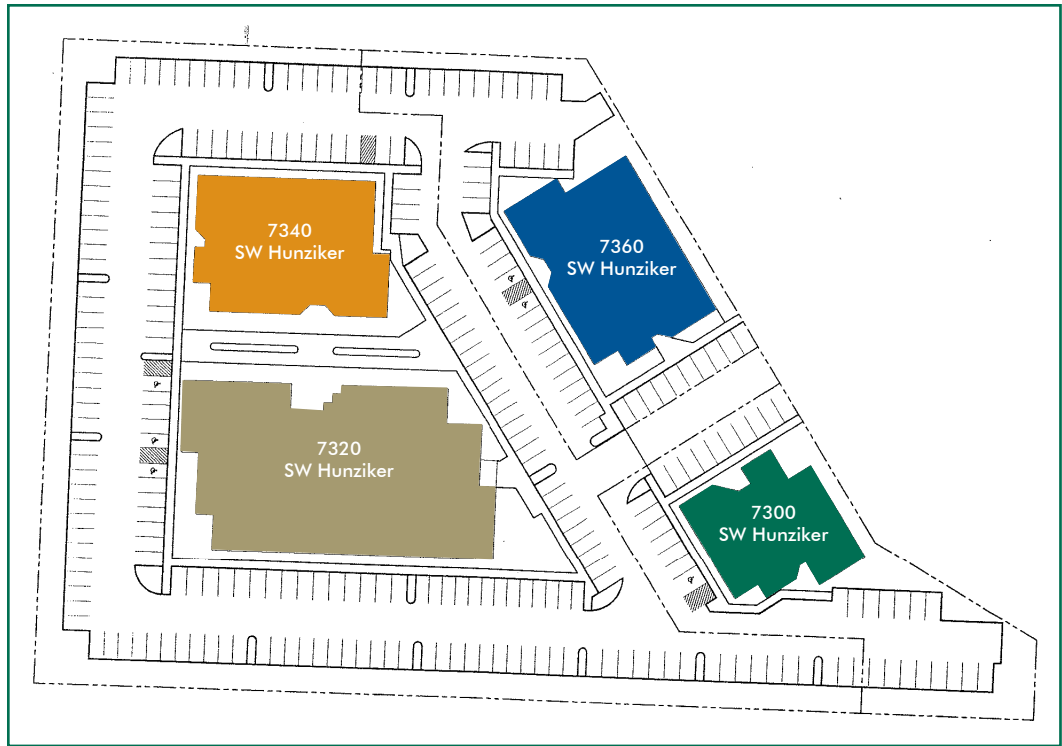
7360 SW Hunziker



FOR LEASE

HILLTOP BUSINESS CENTER

7300-7360 SW HUNZIKER ROAD :: PORTLAND, OR 97223



FOR MORE
INFORMATION
PLEASE
CONTACT

Shawn Adams

Senior RE Manager

T 503.221.4841

shawn.adams@cbre.com

www.cbre.com/shawn.adams

CBRE

1300 SW Fifth Avenue

Suite 3000

Portland, OR 97201

T 503.221.1900

F 503.221.4873

www.cbre.com/portland

© 2013 CBRE, Inc. This information has been obtained from sources believed reliable. We have not verified it and make no guarantee, warranty or representation about it. Any projections, opinions, assumptions or estimates used are for example only and do not represent the current or future performance of the property. You and your advisors should conduct a careful, independent investigation of the property to determine to your satisfaction the suitability of the property for your needs. Photos herein are the property of their respective owners and use of these images without the express written consent of the owner is prohibited.