

TOWN CENTER at GATEWAY PARK

SWC Salida Street & Tower Road, Aurora, CO



PROPERTY OVERVIEW:

- 18,572 SF on up to 43,604 SF available with great exposure to I-70
- 4,200 SF restaurant opportunity available 3/31/2018
- Call Listing Agent for pricing and terms
- Excellent retail corridor
- Growing and expanding trade area
- 71,727 residents and 67,998 employees within 3 miles

For more information,
contact:

Rich Otterstetter

o. 720-287-6860

c. 303-883-1003

richo@creginc.com

Adam Rubenstein

o. 720-598-6050

c. 303-257-1481

adam@creginc.com

JOIN:



and many other first class retailers!

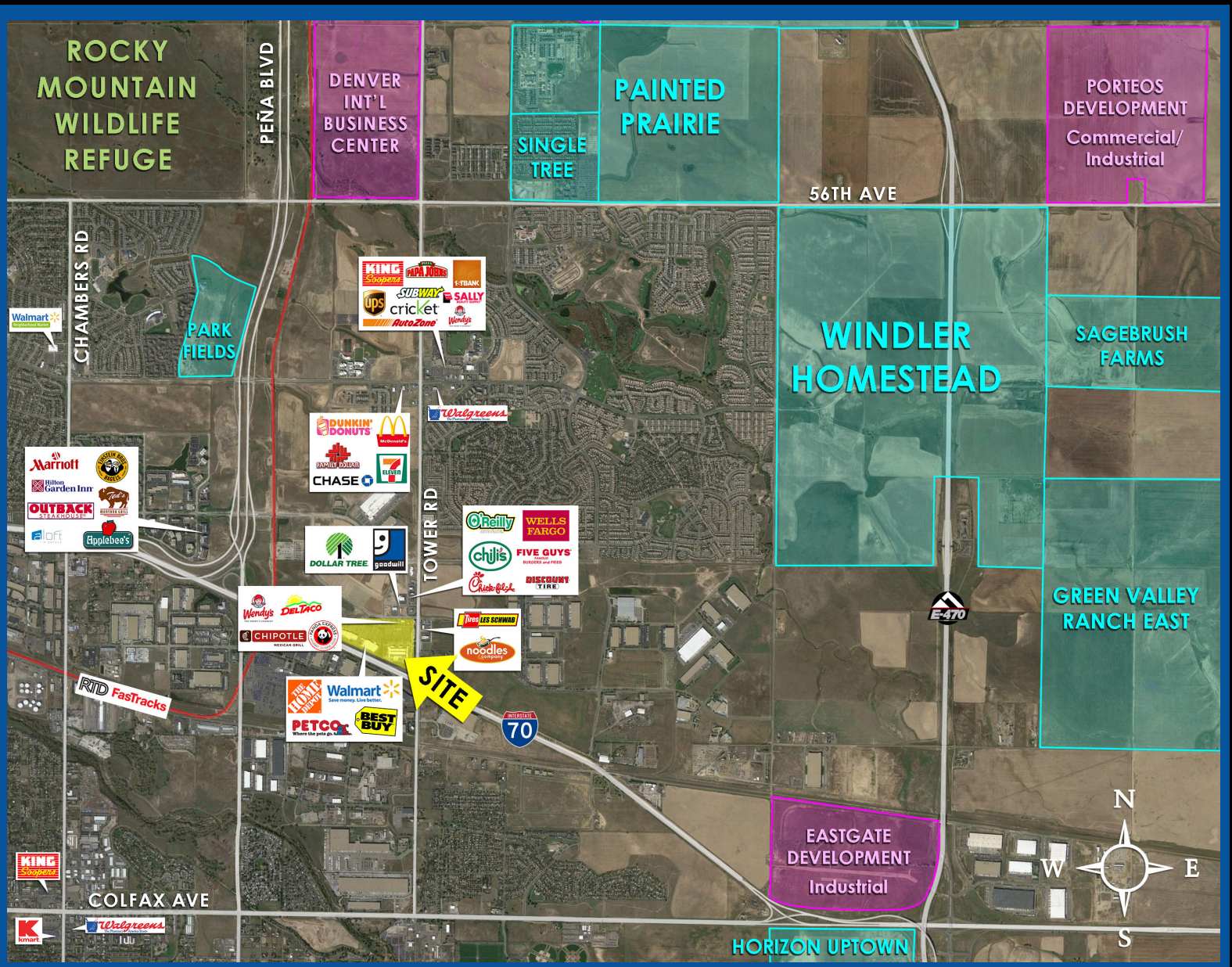
CROSBIE

REAL ESTATE

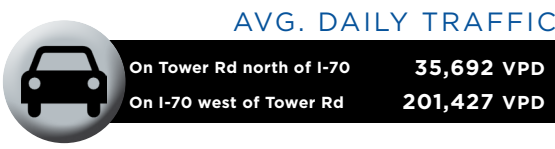
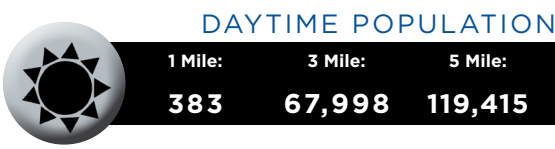
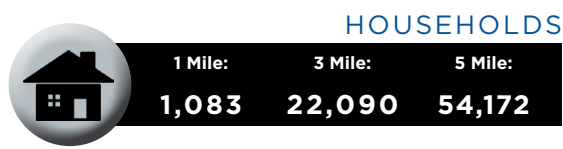
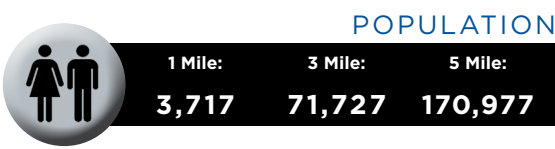
GROUP

TOWN CENTER at GATEWAY PARK

SWC Salida Street & Tower Road, Aurora, CO



DEMOGRAPHICS



The information contained in this brochure was compiled from reliable sources, however Crosbie Real Estate Group, LLC does not warrant nor guarantee the accuracy of the representations herein. Crosbie Real Estate Group, LLC and its broker associates, as listed, are representing the Landlord/Seller of this property. Different brokerage relationships exist.



Rich Otterstetter
 o. 720-287-6860
 c. 303-883-1003
richo@creginc.com

Adam Rubenstein
 o. 720-598-6050
 c. 303-257-1481
adam@creginc.com

