

# Medical Space Opportunity - Atlantic Terminal/Barclays



Rendering

528 Atlantic Avenue, Brooklyn, NYC - at Pacific Street & 3rd Avenue

## SUBWAY RIDERSHIP

42,231 +  
weekday subway  
riders - Atlantic Av Terminal

54,221 +  
weekend subway  
riders - Atlantic Av Terminal

1,172 +  
Retail Businesses  
Radius - 1 mile

## APPROXIMATE SIZE

Ground: 13,626 sf  
Lower Level: 12,070 sf  
Total: 25,696 sf\*

\* Reasonable divisions considered

## POSSESSION

Q3 2018

## CEIL. HT.

Ground: 18 ft.  
Lower Level: 12 ft.


## RENT

Upon Request

## FRONTAGE

150' on 3rd Avenue  
100' along Atlantic  
Avenue

## COMMENTS

- ▶ Accessible via Atlantic Avenue Terminal transit hub's **2 3 4 5 N Q R B D** subway lines and  Long Island Rail Road
- ▶ Block-through new development spanning from Atlantic Avenue to Pacific Street at 3rd Avenue

## FOR FURTHER DETAILS CONTACT:

**BEN WALLER**

212-400-9515 | bwaller@absre.com

**MARK TERGESEN**

212-400-9528 | mt@absre.com

**ALAN S. COHEN**

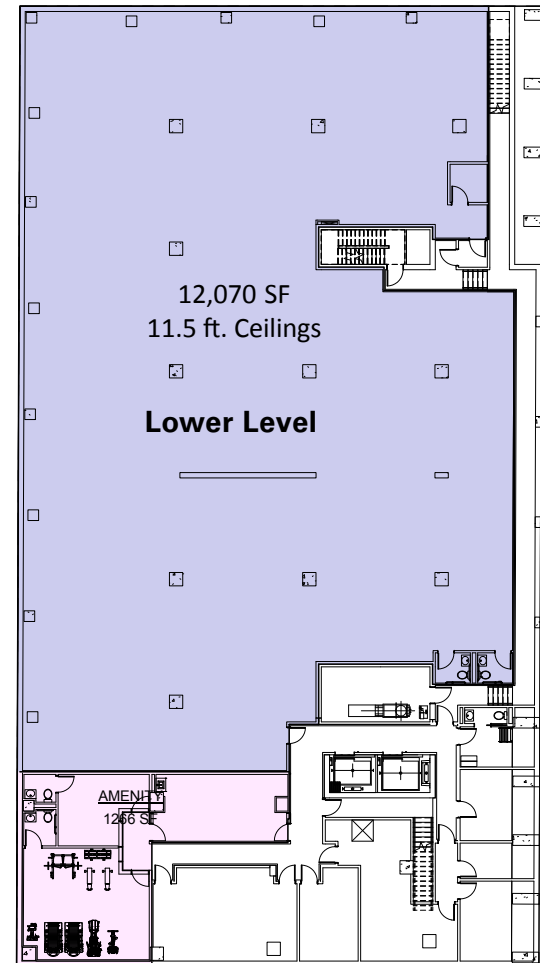
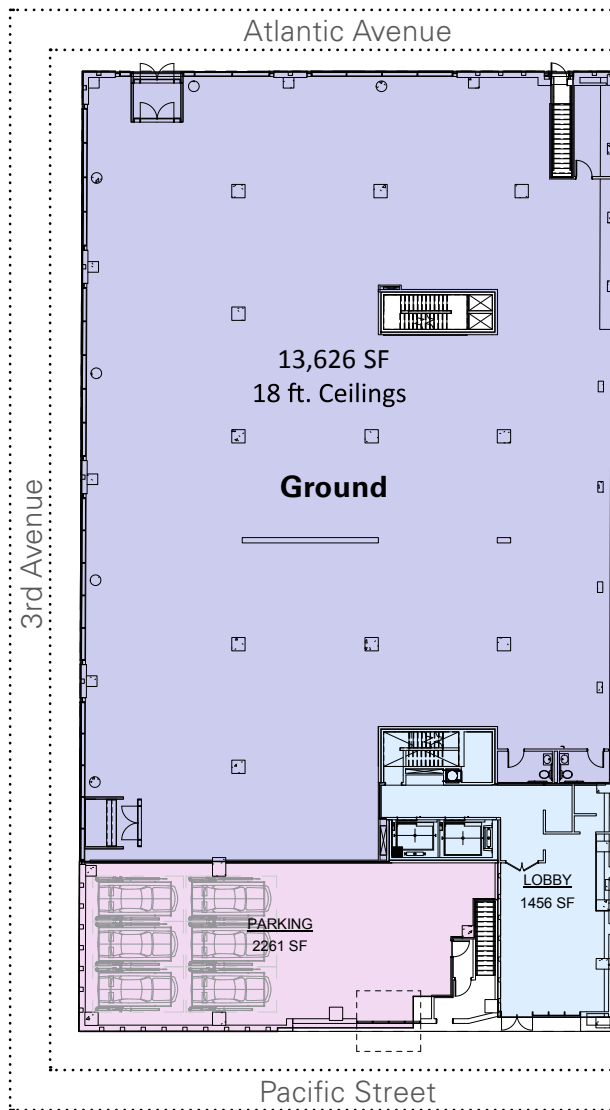
212-400-2359 | acohen@absre.com

**JAKE BANK**

212-400-9486 | jbank@absre.com



# 528 Atlantic Avenue, Brooklyn, NYC - 25,696 SF Single Tenant Option



## FOR FURTHER DETAILS CONTACT:

**BEN WALLER**

212-400-9515 | [bwaller@absre.com](mailto:bwaller@absre.com)

**MARK TERGESEN**

212-400-9528 | [mt@absre.com](mailto:mt@absre.com)

**ALAN S. COHEN**

212-400-2359 | [acohen@absre.com](mailto:acohen@absre.com)

**JAKE BANK**

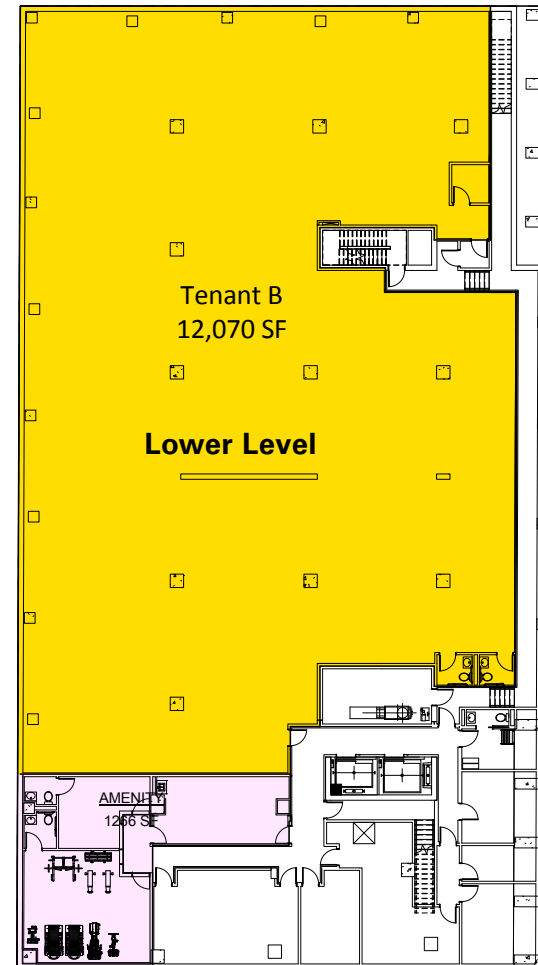
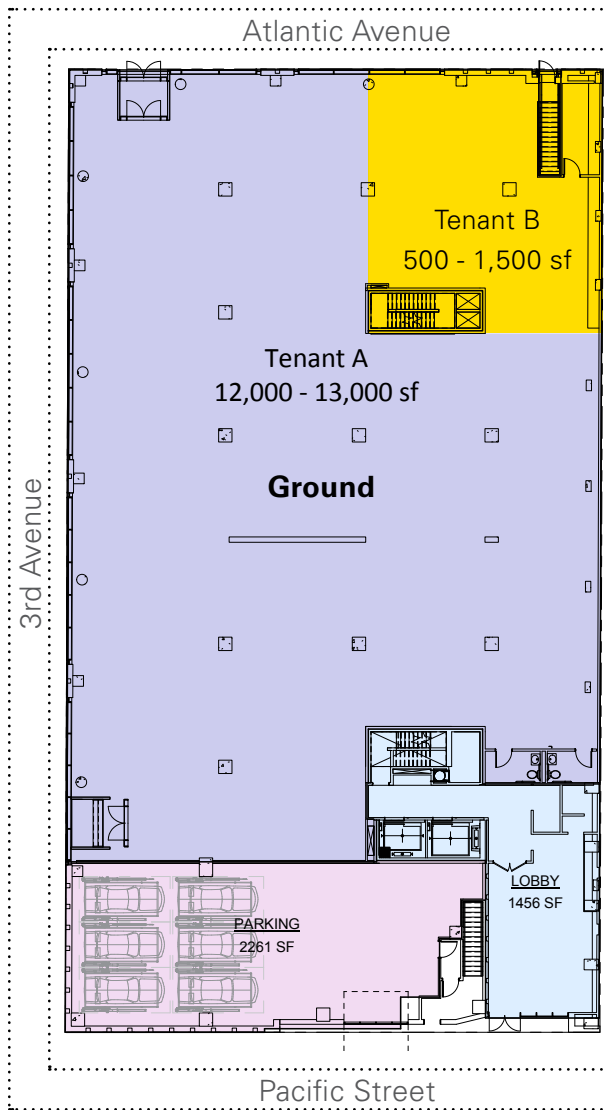
212-400-9486 | [jbanks@absre.com](mailto:jbanks@absre.com)

ABS Partners Real Estate, LLC • 200 Park Avenue South, New York, NY 10003 • T 212.400.6060 • F 212.400.6099 [www.absre.com](http://www.absre.com)

\*All information is from sources deemed reliable but is subject to errors or omissions of any magnitude, withdrawal from market, or changes in terms, all without notice. Brokers employment and payment only by written agreement.

\*Licensed Real Estate Broker • \*\*Licensed Associate Real Estate Broker • \*\*\*Licensed Real Estate Salesperson

# 528 Atlantic Avenue, Brooklyn, NYC - Two-Tenant Option



## FOR FURTHER DETAILS CONTACT:

**BEN WALLER**

212-400-9515 | [bwaller@absre.com](mailto:bwaller@absre.com)

**MARK TERGESEN**

212-400-9528 | [mt@absre.com](mailto:mt@absre.com)

**ALAN S. COHEN**

212-400-2359 | [acohen@absre.com](mailto:acohen@absre.com)

**JAKE BANK**

212-400-9486 | [jbank@absre.com](mailto:jbank@absre.com)

ABS Partners Real Estate, LLC • 200 Park Avenue South, New York, NY 10003 • T 212.400.6060 • F 212.400.6099 [www.absre.com](http://www.absre.com)

\*All information is from sources deemed reliable but is subject to errors or omissions of any magnitude, withdrawal from market, or changes in terms, all without notice. Brokers employment and payment only by written agreement.

\*Licensed Real Estate Broker • \*\*Licensed Associate Real Estate Broker • \*\*\*Licensed Real Estate Salesperson

# 528 Atlantic Avenue, Brooklyn, NYC - Neighborhood

**14 Million SF Total Development**  
**11,000 New Residential Units**  
**1,200 New Hotel Rooms**  
**1.3 Million SF of Retail**

**Proximity to Brooklyn's Most Trafficked Transportation Hub**  
**The Fourth Most Populous City in the USA**



## Surrounded by 8 Flourishing Neighborhoods

