

200 Butterfield Road, North Aurora  
East River Center

**TWO UNITS ± 1,388 SF FOR LEASE**



## SPECIFICATIONS

AVAILABLE SIZE: 1,388 SF (2 Units)

OFFICE SIZE: 13,889 SF

LAND AREA: 3.12 Acres

PARKING: 70 Surface Spaces

ZONING: B-2

YEAR BUILT: 2001

FRONTAGE: 302' on Butterfield Road

- This is a newer retail center located on heavily traveled Butterfield Road/Rte. 56 in North Aurora.
- Center has premium space available at very competitive rates for qualified Tenants.
- Located on south side of Butterfield Road/Rte. 56 just to the east of Rte. 25 and close to Pine Creek Road, Eola Road, Farnsworth Avenue, Premium Outlet Center, '88 E/W Tollway, Rte. 59 302' of frontage on Butterfield Rd.

### Contact:

Ron Weissenhofer  
630-712-2573  
rweissenhofer@entrecommercial.com



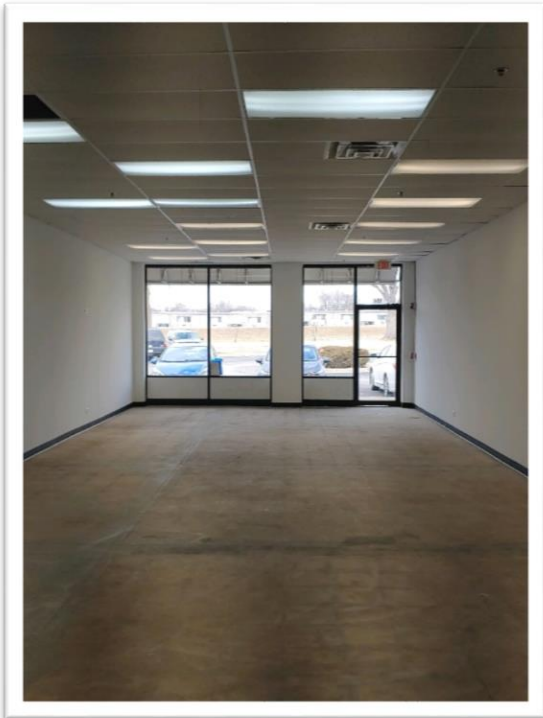
[www.entrecommercial.com](http://www.entrecommercial.com)

3550 Salt Creek Lane, Suite 104, Arlington Heights, IL. 60005

**ENTRE**  
Commercial Realty LLC

200 Butterfield Road, North Aurora  
East River Center

TWO UNITS ± 1,388 SF FOR LEASE



Contact:

Ron Weissenhofer  
630-712-2573  
rweissenhofer@entrecmercial.com

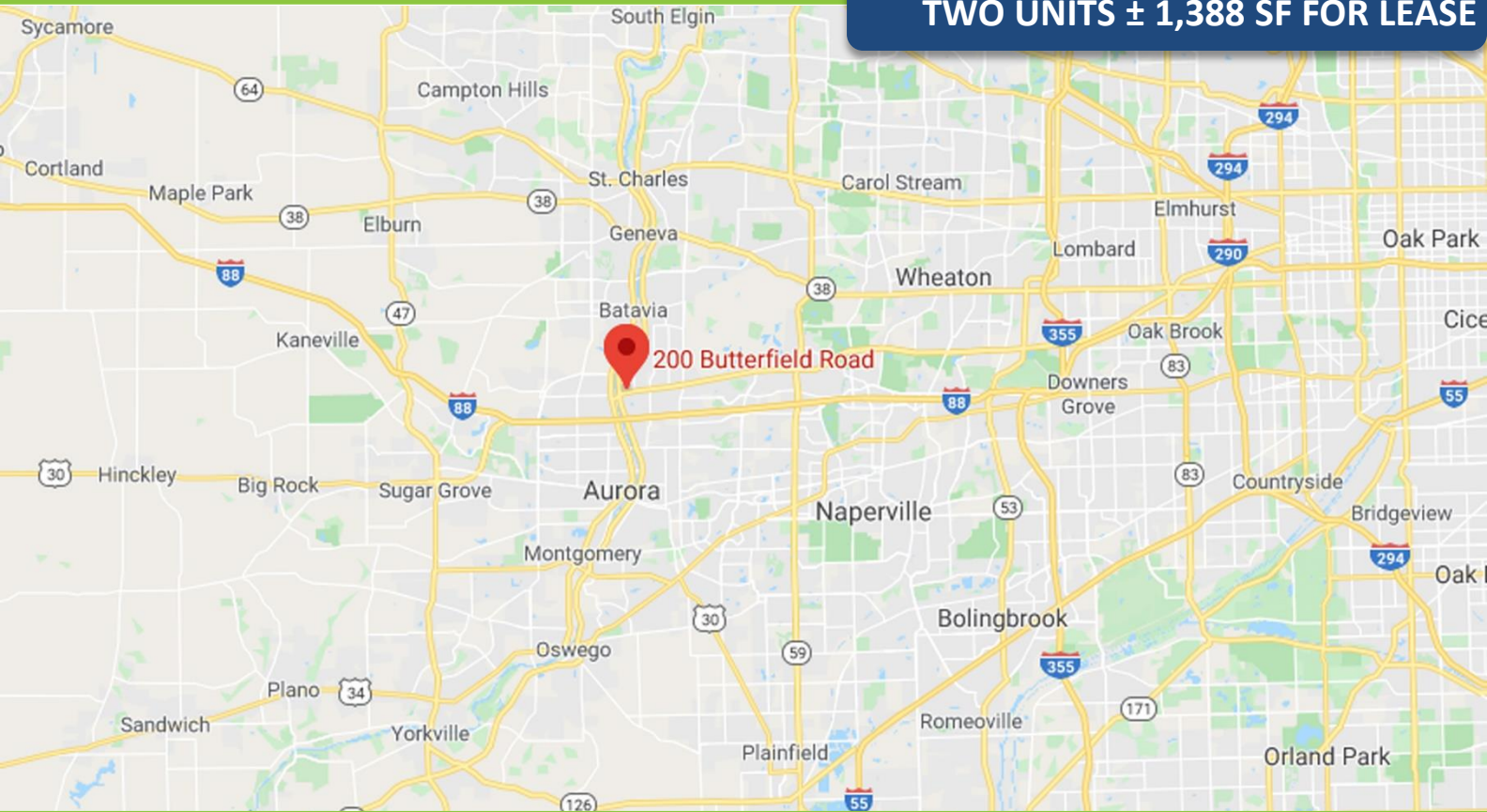
[www.entrecmercial.com](http://www.entrecmercial.com)

3550 Salt Creek Lane, Suite 104, Arlington Heights, IL. 60005

**ENTREE**  
Commercial Realty LLC

## 200 Butterfield Road, North Aurora East River Center

**TWO UNITS ± 1,388 SF FOR LEASE**



### Contact:

Ron Weissenhofer  
630-712-2573  
rweissenhofer@entrecmercial.com

[www.entrecmercial.com](http://www.entrecmercial.com)

3550 Salt Creek Lane, Suite 104, Arlington Heights, IL. 60005

**ENTREE**  
Commercial Realty LLC