



EVERGREEN VILLAGE
FOWLER RD. AT RUBY AVE.
SAN JOSE,
CALIFORNIA



Anchored Center

OFFICE SPACES AVAILABLE



PROPERTY INFORMATION

Beautiful Evergreen Village is an urban oasis planned around a central square, with easy parking and access. In addition to the retail buildings, a new Public Library Branch was completed in 2016.

- Anchored by Walmart Neighborhood Market
- 2nd Floor Offices Available 750± SF, 2,053± SF, 3,340± SF and 4,701± SF (5,393± SF Possible-See Attached Plans)
- Co-Tenants Include Bank of America, inMotion Fitness, Chase, and Evergreen Coffee Company
- Coming Soon Curry Pizza House and Sophie's Grill

ESTIMATE DEMOGRAPHICS:

	<u>1 MILE</u>	<u>3 MILES</u>	<u>5 MILES</u>
POPULATION:	26,533	119,532	353,428
AVG. HH INCOME:	\$188,311	\$143,819	\$108,090

FOR MORE INFORMATION CONTACT:

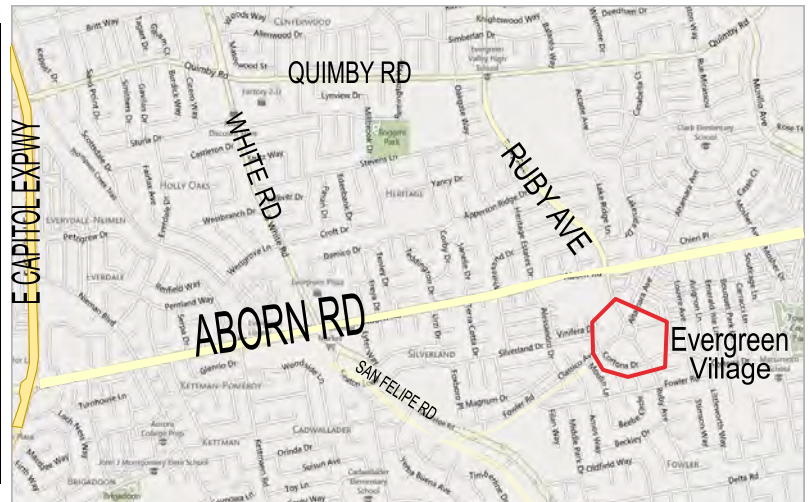
MEACHAM/OPPENHEIMER, INC.
CORFAC INTERNATIONAL
8 No. San Pedro St., Suite 300
San Jose, California 95110
Tel: 408.378.5900
Fax: 408.378.5903
www.moinc.net

Ryan Warner
Lic. #01397580

rwarners@moinc.net
(408) 477-2505

Michael Messinger
Lic. #00879292

mike@moinc.net
(408) 378-5900

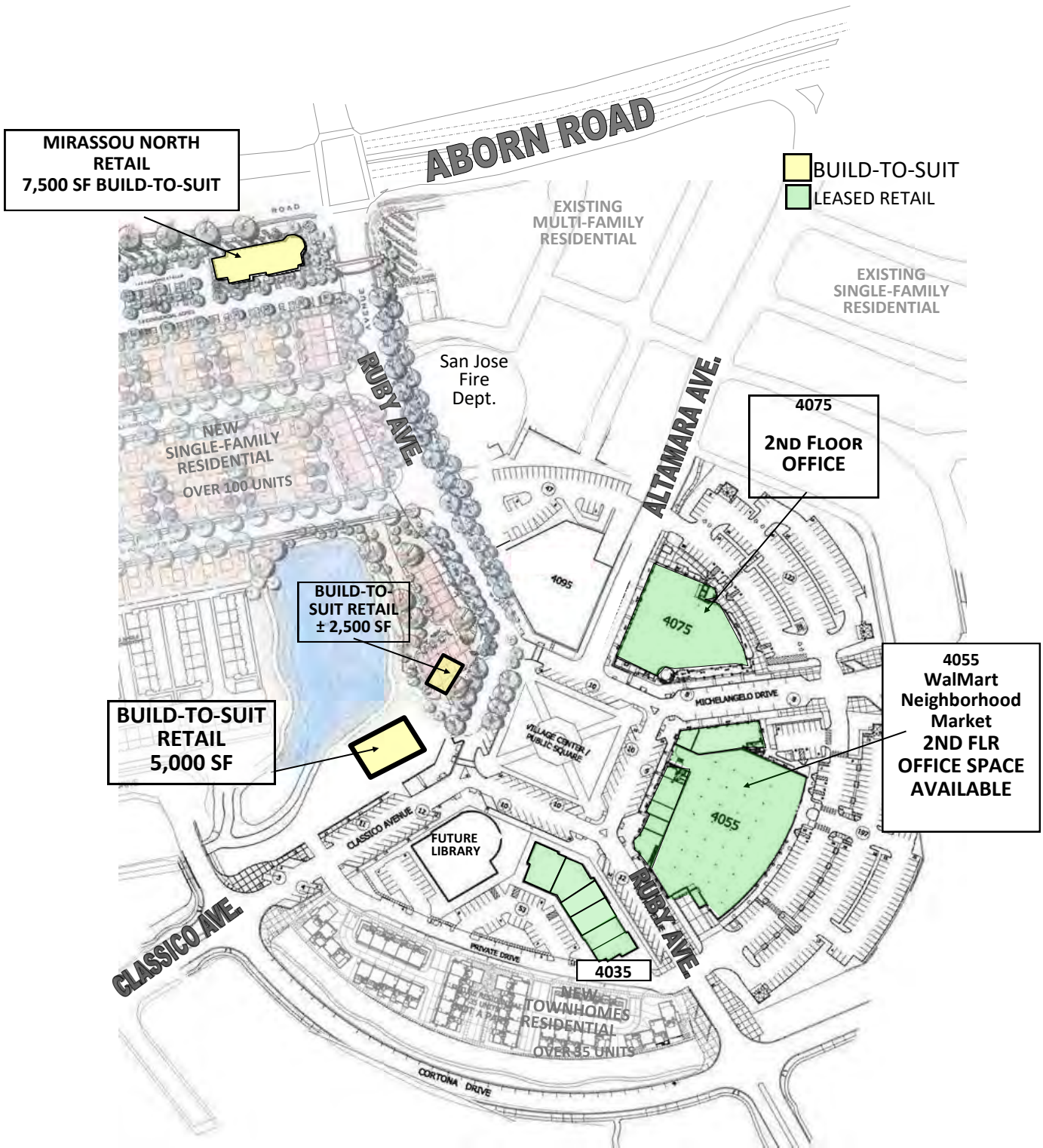


MEACHAM/OPPENHEIMER, INC.
CORFAC INTERNATIONAL
 8 No. San Pedro St., Suite 300
 San Jose, California 95110
 Tel: 408.378.5900
www.moinc.net

Ryan Warner
 Lic. #01397580
rwarn@moinc.net
(408) 477-2505

Michael Messinger
 Lic. #00879292
mike@moinc.net
(408) 378-5900

EVERGREEN VILLAGE SQUARE

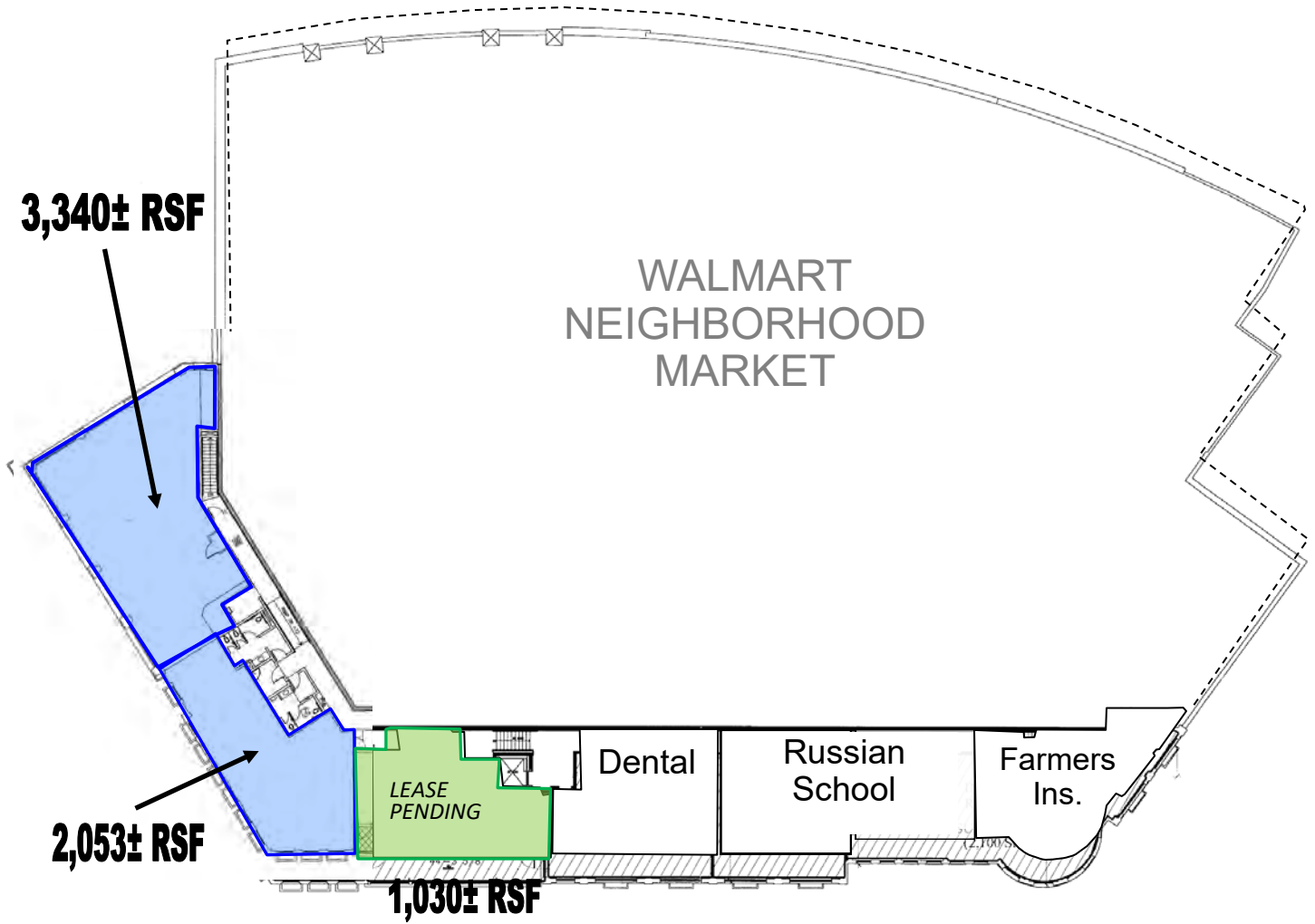


MEACHAM/OPPENHEIMER, INC.
CORFAC INTERNATIONAL
 8 No. San Pedro St., Suite 300
 San Jose, California 95110
 Tel: 408.378.5900
 www.moinc.net

Ryan Warner
 Lic. #01397580
rwarners@moinc.net
 (408) 477-2505

Michael Messinger
 Lic. #00879292
mike@moinc.net
 (408) 378-5900

EVERGREEN VILLAGE SQUARE
4055 EVERGREEN VILLAGE SQUARE — "BUILDING B"
SECOND FLOOR



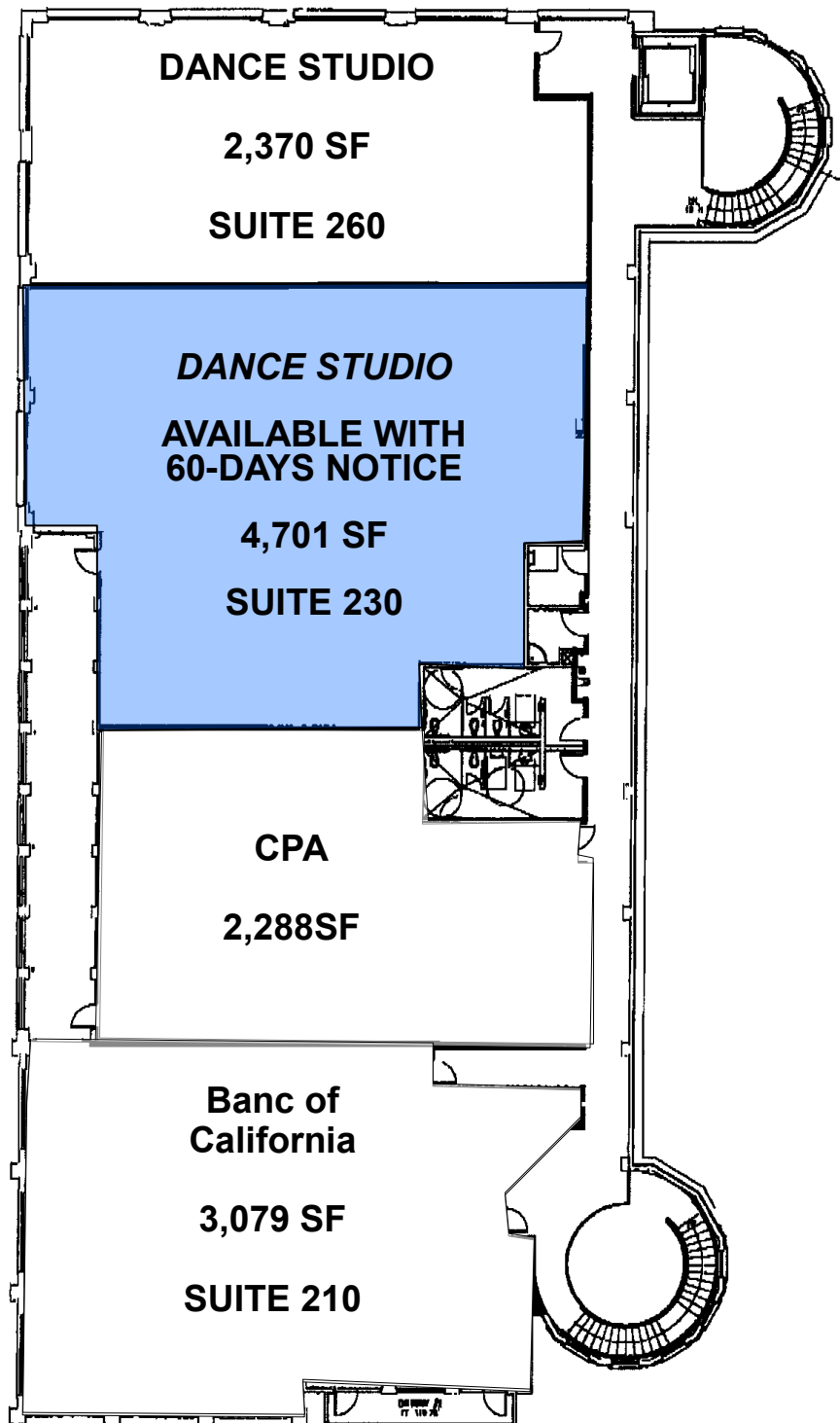
Could Be Combined for
5,393± RSF

MEACHAM/OPPENHEIMER, INC.
CORFAC INTERNATIONAL
8 No. San Pedro St., Suite 300
San Jose, California 95110
Tel: 408.378.5900
www.moinc.net

Ryan Warner
Lic. #01397580
rwarners@moinc.net
(408) 477-2505

Michael Messinger
Lic. #00879292
mike@moinc.net
(408) 378-5900

EVERGREEN VILLAGE SQUARE
4075 EVERGREEN VILLAGE SQUARE — "BUILDING "C"
SECOND FLOOR

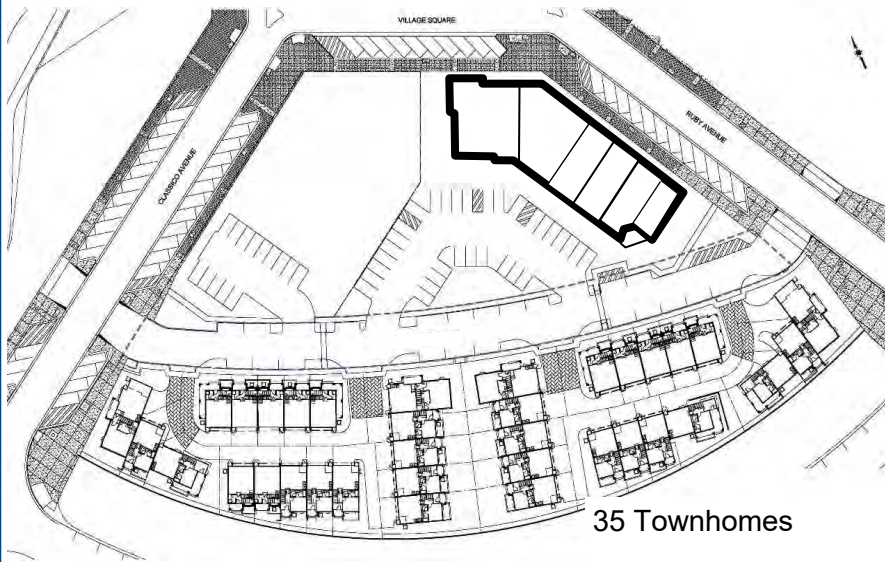
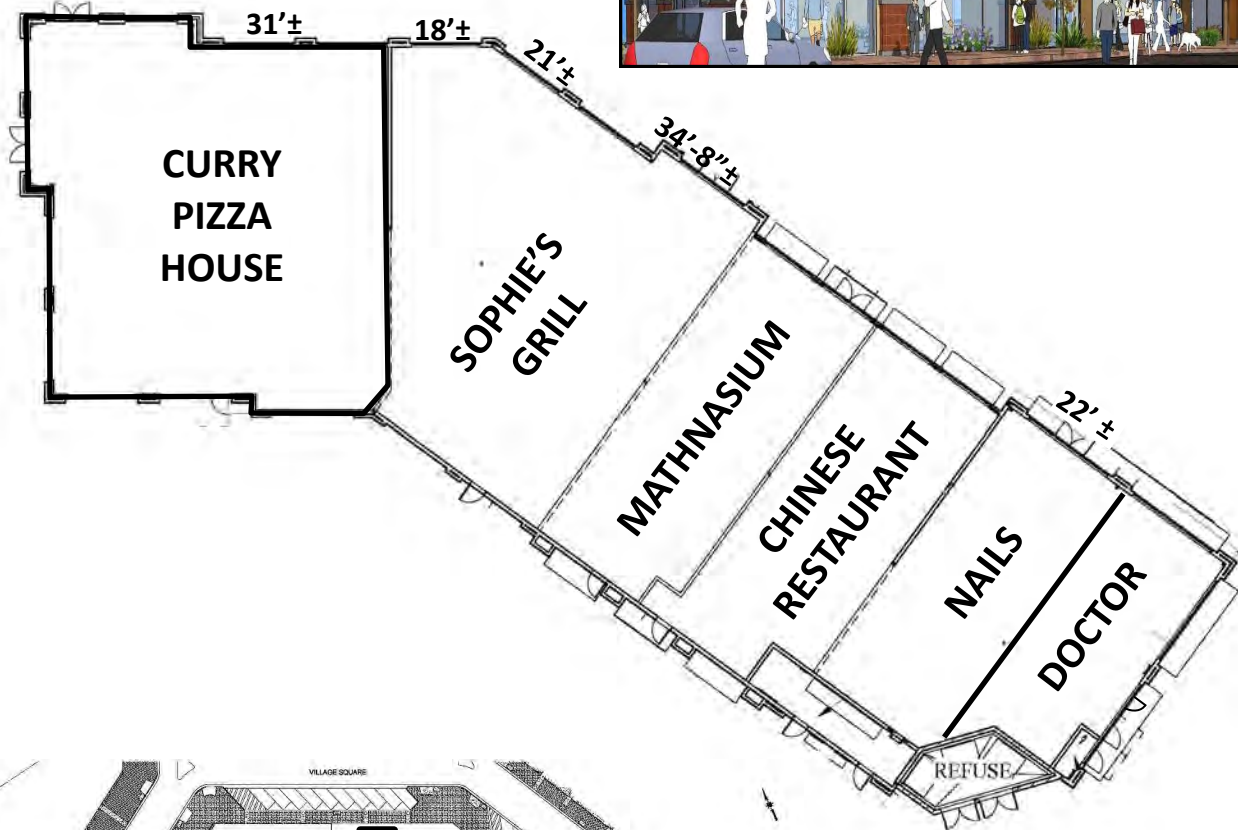


MEACHAM/OPPENHEIMER, INC.
CORFAC INTERNATIONAL
8 No. San Pedro St., Suite 300
San Jose, California 95110
Tel: 408.378.5900
www.moinc.net

Ryan Warner
Lic. #01397580
rwarner@moinc.net
(408) 477-2505

Michael Messinger
Lic. #00879292
mike@moinc.net
(408) 378-5900

EVERGREEN VILLAGE SQUARE
 4035 EVERGREEN VILLAGE SQUARE — "BUILDING A"



MEACHAM/OPPENHEIMER, INC.
 CORFAC INTERNATIONAL
 8 No. San Pedro St., Suite 300
 San Jose, California 95110
 Tel: 408.378.5900
 www.moinc.net

Ryan Warner
 Lic. #01397580
rwarner@moinc.net
 (408) 477-2505

Michael Messinger
 Lic. #00879292
mike@moinc.net
 (408) 378-5900

EVERGREEN VILLAGE SQUARE
4055 EVERGREEN VILLAGE SQUARE — "BUILDING B"
FIRST FLOOR

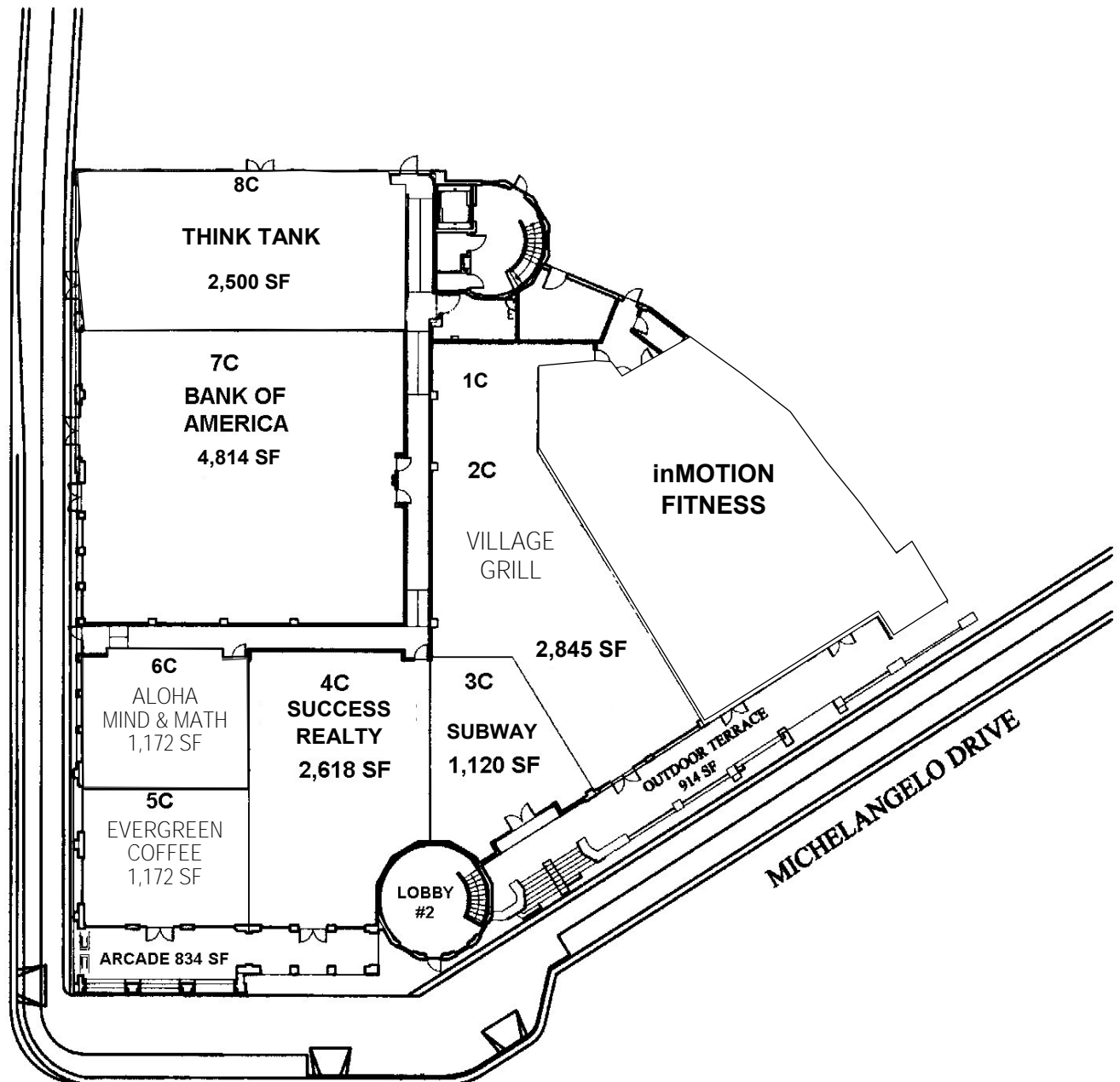


MEACHAM/OPPENHEIMER, INC.
CORFAC INTERNATIONAL
8 No. San Pedro St., Suite 300
San Jose, California 95110
Tel: 408.378.5900
www.moinc.net

Ryan Warner
Lic. #01397580
rwarner@moinc.net
(408) 477-2505

Michael Messinger
Lic. #00879292
mike@moinc.net
(408) 378-5900

**EVERGREEN VILLAGE SQUARE
4075 EVERGREEN VILLAGE SQUARE — "BUILDING "C"
FIRST FLOOR**



MEACHAM/OPPENHEIMER, INC.
CORFAC INTERNATIONAL
 8 No. San Pedro St., Suite 300
 San Jose, California 95110
 Tel: 408.378.5900
 www.moinc.net

Ryan Warner
 Lic. #01397580
rwarner@moinc.net
(408) 477-2505

Michael Messinger
 Lic. #00879292
mike@moinc.net
(408) 378-5900