

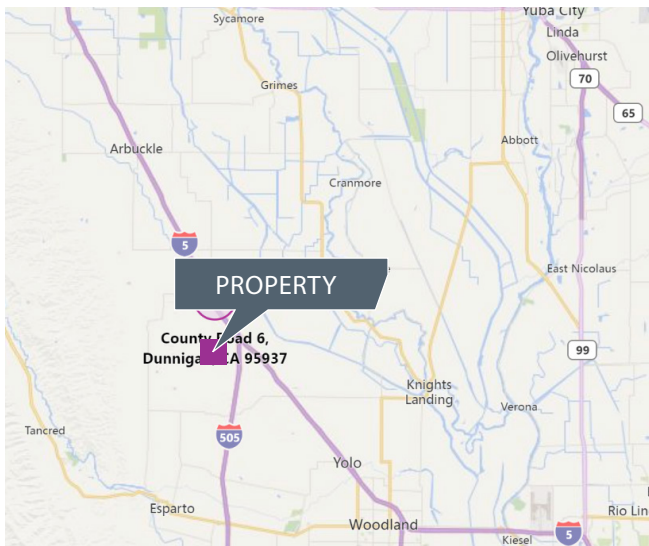


**CUSHMAN &
WAKEFIELD**

FOR SALE

CR 6

DUNNIGAN, CA, 95937



PROPERTY HIGHLIGHTS

- 16+ acres of commercial land with excellent freeway visibility located directly off of Interstate 5 at the County Road 6 exit on the Northwest Quadrant just north of the I-505 and I-5 Junction.
- Dunnigan serves as a key Highway Commercial stop for travelers and through the northern part of the state.

KEN REIFF, SIOR

Managing Director Principal
+1 916 617 4241
ken.reiff@cushwake.com
LIC #01133059

Jay Hamer

Director
+1 916 329 1556
jay.hamer@cushwake.com
LIC #000991961

Michael Harris

Director
+1 916 329 1551
michale.harris@cushwake.com
LIC #01878293

400 Capitol Mall, Suite 1800
Sacramento, California 95814
main +1 916 288 4800
cushmanwakefield.com



**CUSHMAN &
WAKEFIELD**

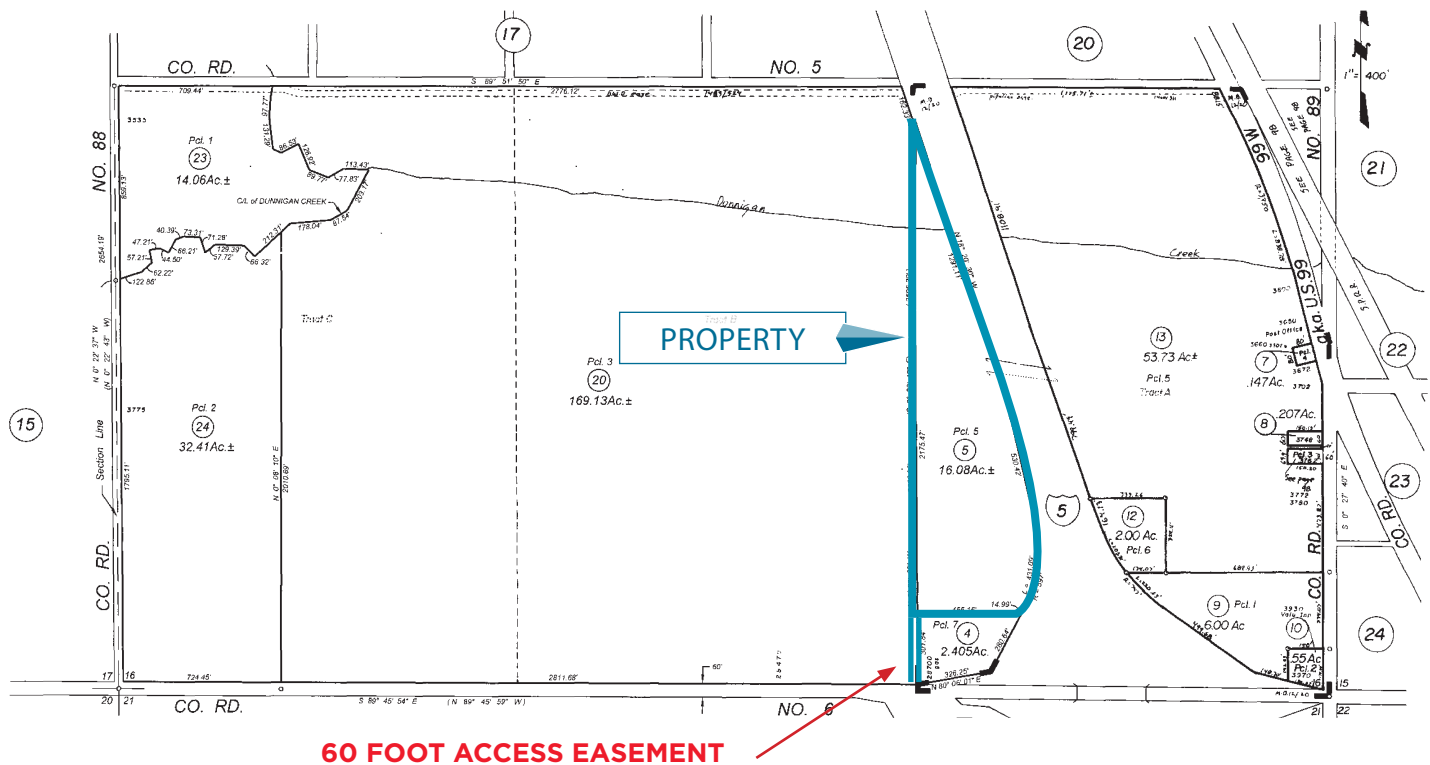
FOR SALE

CR 6

DUNNIGAN, CA, 95937

PARCEL MAP

Parcel No.	051-160-005-000
Zoning	HSC
Acres	16.08



KEN REIFF, SIOR
Managing Director Principal
+1 916 617 4241
ken.reiff@cushwake.com
LIC #01133059

Jay Hamer
Director
+1 916 329 1556
jay.hamer@cushwake.com
LIC #000991961

Michael Harris
Director
+1 916 329 1551
michale.harris@cushwake.com
LIC #01878293

400 Capitol Mall, Suite 1800
Sacramento, California 95814
main +1 916 288 4800
cushmanwakefield.com

Cushman & Wakefield Copyright 2017. No warranty or representation, express or implied, is made to the accuracy or completeness of the information contained herein, and same is submitted subject to errors, omissions, change of price, rental or other conditions, withdrawal without notice, and to any special listing conditions imposed by the property owner(s). As applicable, we make no representation as to the condition of the property (or properties) in question.