

FOR LEASE

7,400 SF MEDICAL OFFICE

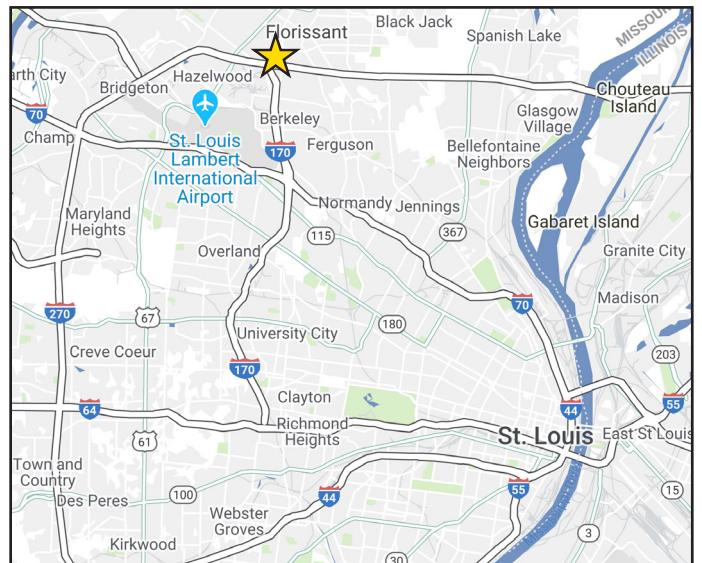
1265 Graham Road / Florissant, MO 63031



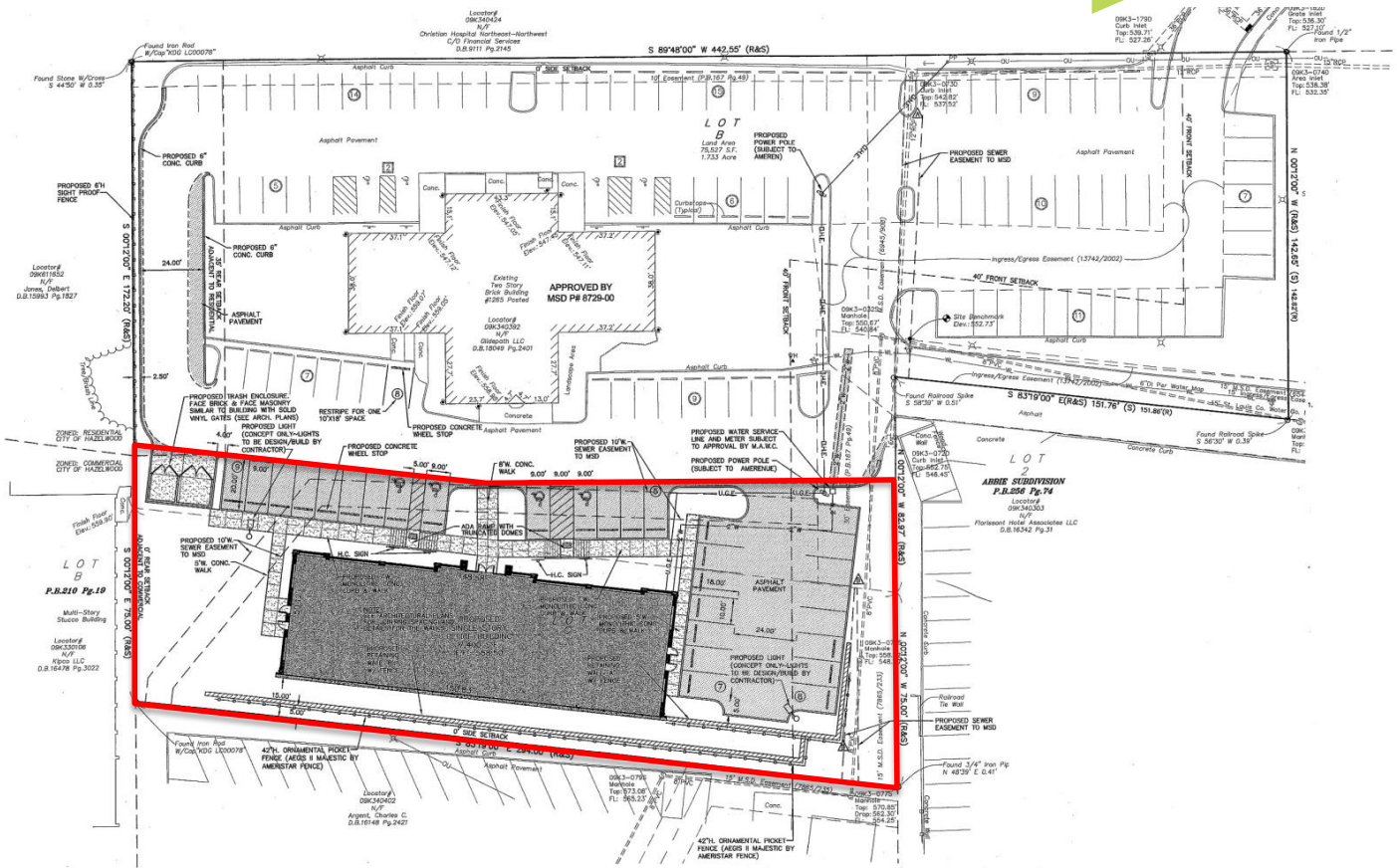
PROPERTY HIGHLIGHTS

- Proposed new construction: 7,400 SF medical office building
- Plenty of parking: 30 spaces adjacent to the building plus 15 in the adjoining parking lot
- Convenient access to I-270 just east of I-170, near St. Louis Lambert International Airport
- The property is located less than 1/3 of a mile from I-270 and adjacent to BJC HealthCare's Northwest Healthcare offering the following services:
 - Breast Health
 - Emergency Care
 - Imaging
 - Laboratory Services
 - Sleep Disorders
 - Therapy and Rehabilitation

MAP



PROPOSED SITE PLAN



PROPOSED ELEVATION (NORTH)



PLEASE CONTACT:

ANN DULLE

Senior Associate
 +1 314 655 6064
 ann.dulle@cbre.com

© 2020 CBRE, Inc. All rights reserved. This information has been obtained from sources believed reliable, but has not been verified for accuracy or completeness. You should conduct a careful, independent investigation of the property and verify all information. Any reliance on this information is solely at your own risk. CBRE and the CBRE logo are service marks of CBRE, Inc. All other marks displayed on this document are the property of their respective owners, and the use of such logos does not imply any affiliation with or endorsement of CBRE. Photos herein are the property of their respective owners. Use of these images without the express written consent of the owner is prohibited.