



## 3001 METRO OFFICE PARK

3001 Metro Drive + Bloomington, MN 55425



- ◆ ENERGY STAR rating from the U.S. Environmental Protection Agency (EPA)
- ◆ Located off of I-494 and 34th Avenue
- ◆ Fireplace Lounge with Wi-Fi
- ◆ Abundant parking
- ◆ Conference/Seminar Rooms
- ◆ Approximately \$1.5 million in common areas and exterior renovations
- ◆ Flexible terms and great value
- ◆ On-site management and maintenance

FOR LEASE + [www.metroofficepark.com](http://www.metroofficepark.com)

JASON A. BUTTERFIELD

(952) 460-9830

[jason.butterfield@frauenshuh.com](mailto:jason.butterfield@frauenshuh.com)

ESTD



1983

FRAUENSHUH

COMMERCIAL REAL ESTATE

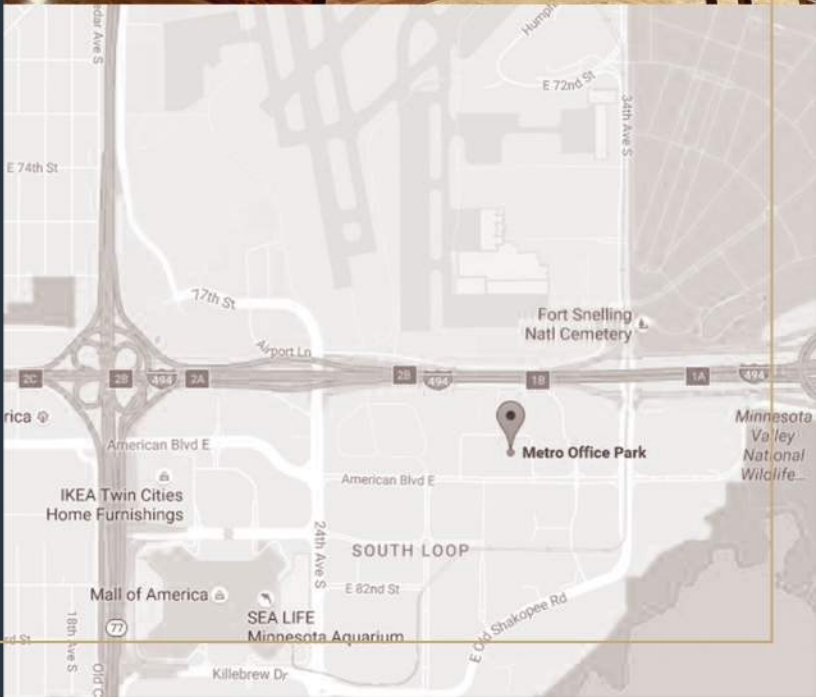
SAMI J. REBER

(952) 460-9855

[sami.reber@frauenshuh.com](mailto:sami.reber@frauenshuh.com)

# 3001 METRO OFFICE PARK

3001 Metro Drive + Bloomington, MN 55425



## ◆ BUILDING DETAILS

- Approximately 107,684 square feet/5 stories
- Built in 1978
- Net Rate: \$10.50-\$11.50 per rentable square foot
- 2019 Estimated Ops/Tax Costs:
  - \$8.08 operating expenses per rsf
  - \$2.60 tax expenses per rsf
  - \$10.68 total per rsf
- Space Available:

|           |                             |
|-----------|-----------------------------|
| Suite 260 | 1,077 rentable square feet  |
| Suite 302 | 1,767 rentable square feet  |
| Suite 310 | 1,244 rentable square feet  |
| Suite 320 | 2,461 rentable square feet  |
| Suite 350 | 10,281 rentable square feet |

## ◆ AMENITIES

- Large floor plate availability (13,000-20,000 SF)
- CenturyLink and Comcast cable available
- Located off I-494 and 34th Avenue
- One block to light-rail transit system
- Seconds from Mall of America
- Equal distance to both downtown Minneapolis and downtown St. Paul
- Fireside Lounge with Wi-Fi (3001 Metro)
- Conference/Seminar rooms
- On MTC bus route
- Fitness center with showers and towel service
- On-site deli/catering
- On-site management and maintenance
- Abundant parking (underground and surface)
- A full service barber shop
- Vending areas in each building
- Near Minnesota Valley Wildlife Refuge
- Accessible bike trails
- Adjacent to new Hyatt Regency, as well as Hilton, Holiday Inn, SpringHill Suites, and Hampton Inn and Suites
- Preferred hotel rates

FRAUENSHUH

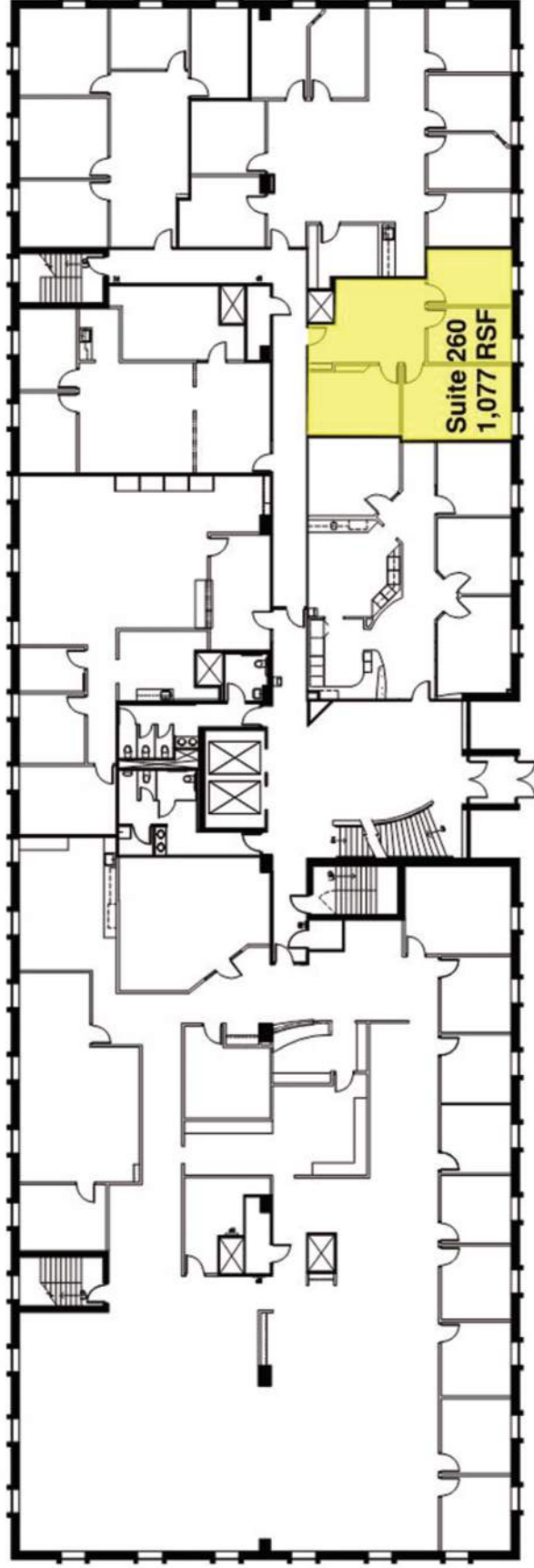
COMMERCIAL REAL ESTATE

[www.frauenshuh.com](http://www.frauenshuh.com)

7101 West 78th Street + Minneapolis, MN 55439

# 3001 METRO OFFICE PARK ♦ FOR LEASE ♦ SECOND FLOOR

3001 Metro Drive ♦ Bloomington, MN 55425 ♦ [www.metroofficepark.com](http://www.metroofficepark.com)



**JASON A. BUTTERFIELD**

(952) 460-9830

[jason.butterfield@frauenshuh.com](mailto:jason.butterfield@frauenshuh.com)



ESTD 1983

**FRAUENSHUH**

COMMERCIAL REAL ESTATE

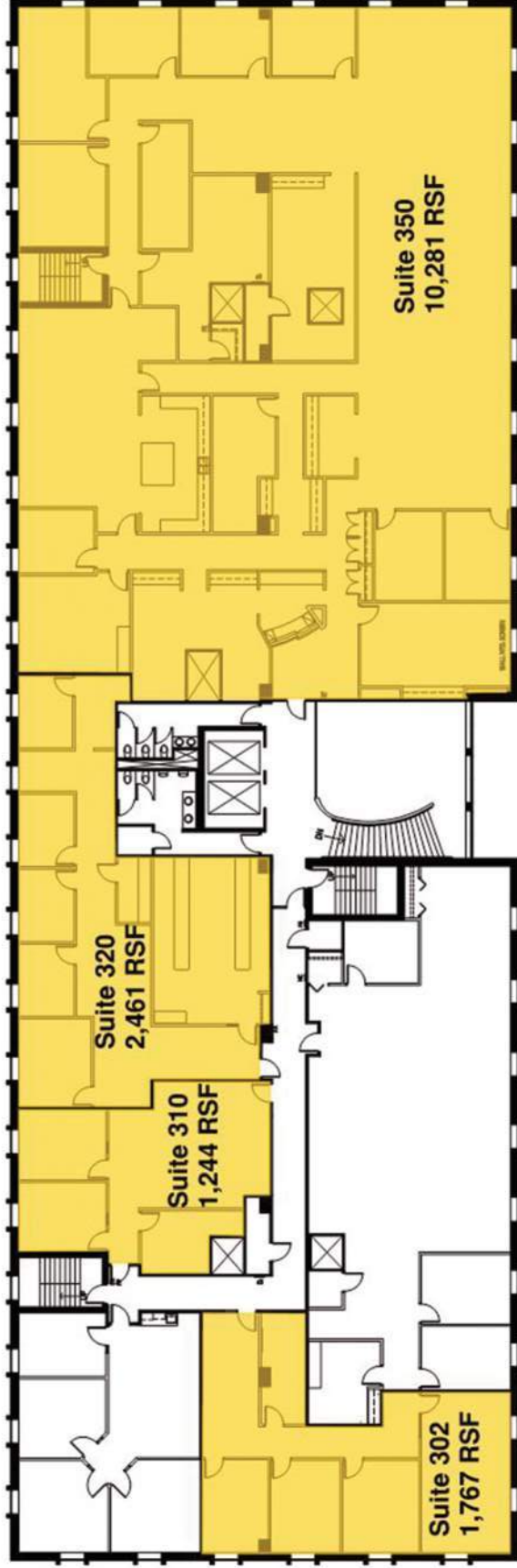
**SAMI J. REBER**

(952) 460-9855

[sami.reber@frauenshuh.com](mailto:sami.reber@frauenshuh.com)

# 3001 METRO OFFICE PARK ♦ FOR LEASE ♦ THIRD FLOOR

3001 Metro Drive ♦ Bloomington, MN 55425 ♦ [www.metroofficepark.com](http://www.metroofficepark.com)



**JASON A. BUTTERFIELD**

(952) 460-9830

[jason.butterfield@frauenshuh.com](mailto:jason.butterfield@frauenshuh.com)



**FRAUENSHUH**

COMMERCIAL REAL ESTATE

**SAMI J. REBER**

(952) 460-9855

[sami.reber@frauenshuh.com](mailto:sami.reber@frauenshuh.com)