

ERSI

ESSENCE
REAL ESTATE
SERVICES INC.

COMMERCIAL REAL ESTATE SINCE 1990

FOR LEASE



LONDON SQUARE

219 - 223 LITTLE CANADA RD E ● LITTLE CANADA, MN 55117

- 1,187 - 6,150 SF AVAILABLE
- ENTIRE 2ND FLOOR OPTION
- SHARED CONFERENCE ROOM
- AMPLE PARKING AVAILABLE
- GREAT ACCESS TO I694, 35E & HWY 36
- MANY AREA AMENITIES INCLUDING: GAS STATIONS, RESTAURANTS, CARIBOU COFFEE, FAST FOOD AND MORE

CONTACT:

WWW.ESSENCEREALESTATE.COM

JEFF NORDNESS
jeff@essencerealestate.com
651-341-5044

LONDON SQUARE

219 - 223 LITTLE CANADA ROAD E • LITTLE CANADA, MN 55117

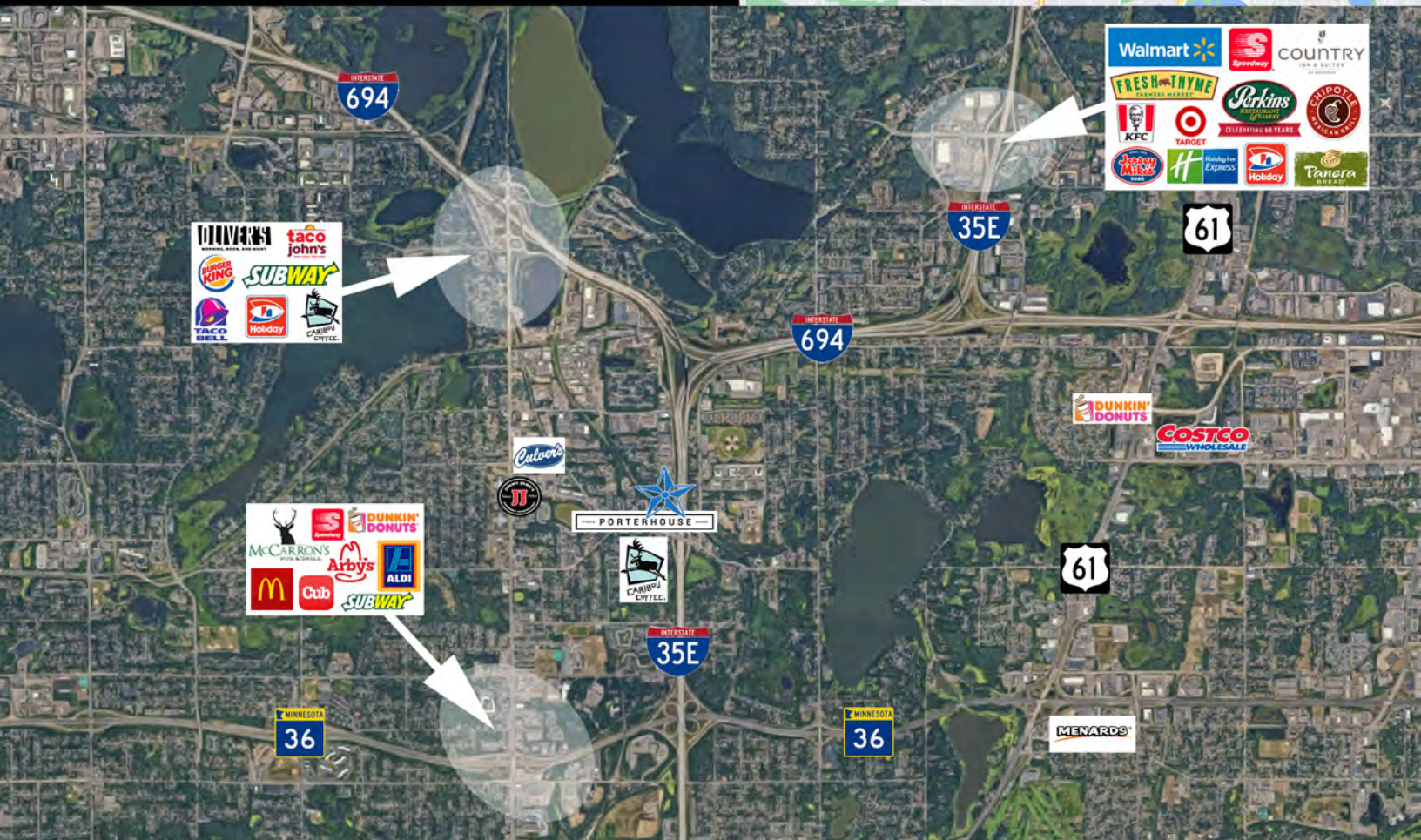
BUILDING DETAILS:

OFFICE GROSS RENT: \$16.50 SF

SPACE AVAILABLE:

BLDG 219 SUITE 210 1,187 SF

BLDG 223 SUITE 200 3,750 SF
ENTIRE FLOOR 6,150 SF



FULL FLOOR OPTION IN IDEAL LOCATION



ESSENCE
REAL ESTATE
SERVICES INC.

JEFF NORDNESS
651-341-5044
jeff@essencerealestate.com

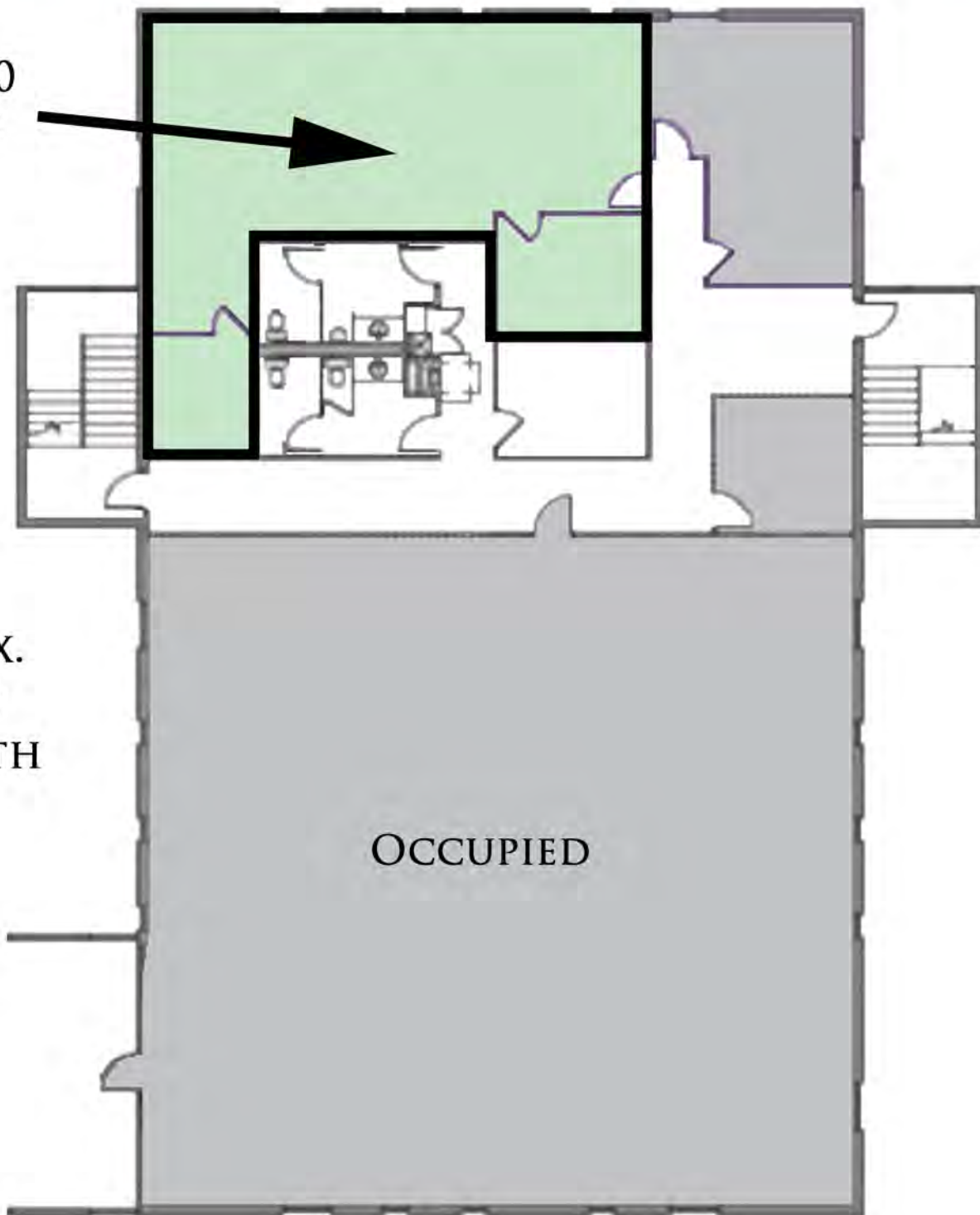
COMMERCIAL REAL ESTATE SINCE 1990

OFFICE: 651-482-1871

LONDON SQUARE

219 LITTLE CANADA ROAD E • LITTLE CANADA, MN 55117

SUITE 210
1,187 SF



APPROX.
\$1,632
A MONTH

OCCUPIED

ERSI

ESSENCE
REAL ESTATE
SERVICES INC.

COMMERCIAL REAL ESTATE SINCE 1990

JEFF NORDNESS

651-341-5044

jeff@essencerealestate.com

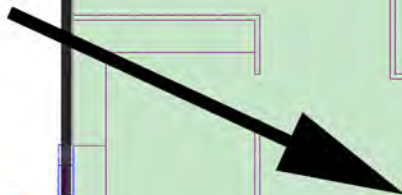
OFFICE: 651-482-1871

LONDON SQUARE

223 LITTLE CANADA ROAD E • LITTLE CANADA, MN 55117

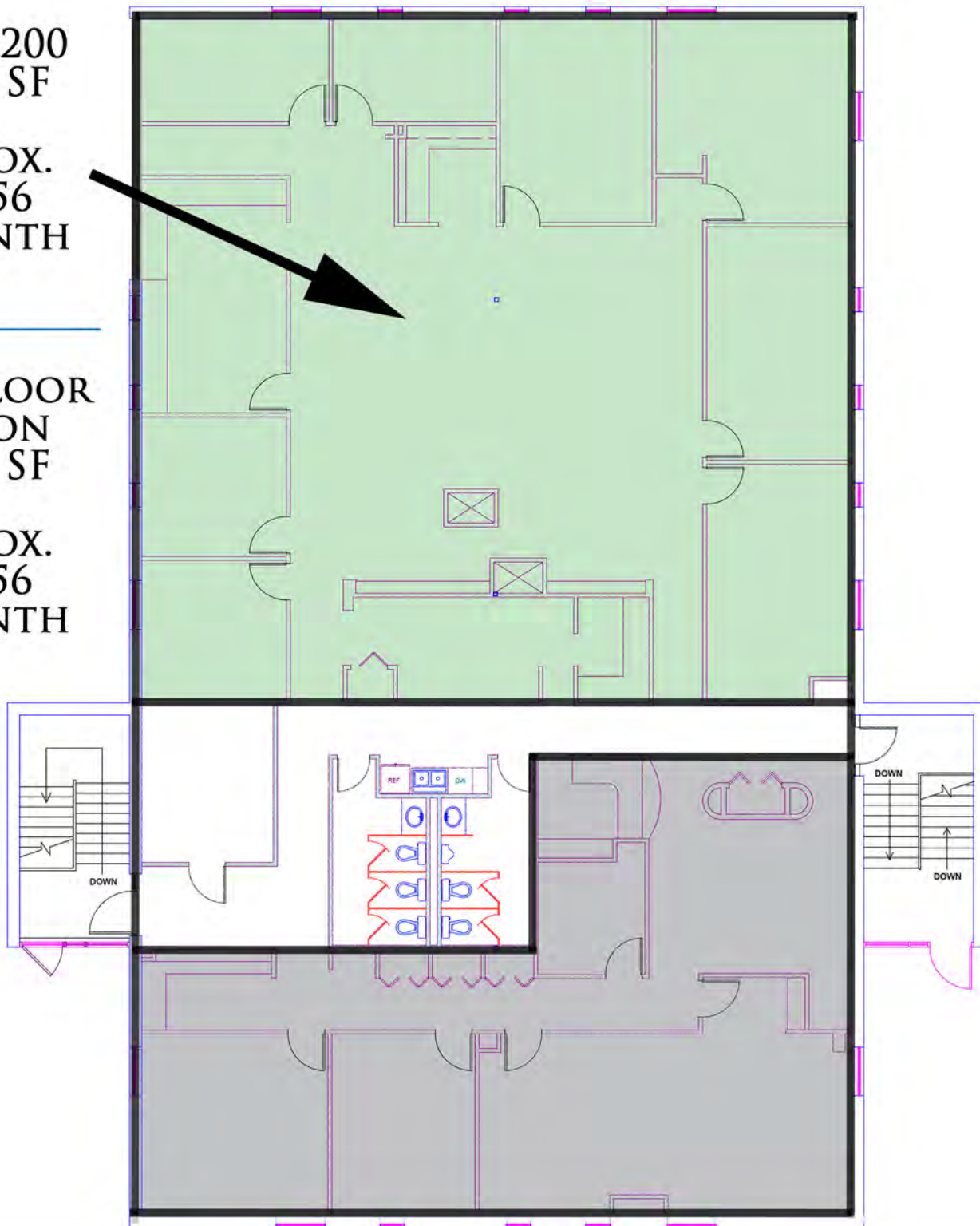
SUITE 200
3,750 SF

APPROX.
\$5,156
A MONTH



FULL FLOOR
OPTION
6,150 SF

APPROX.
\$8,456
A MONTH



ERSI

ESSENCE
REAL ESTATE
SERVICES INC.

COMMERCIAL REAL ESTATE SINCE 1990

JEFF NORDNESS

651-341-5044

jeff@essencerealestate.com

OFFICE: 651-482-1871