



# For Lease

## 3,470 - 7,556 SF Office Space

**ADDRESS:**

---

Ashley Overlook  
4390 Belle Oaks Drive, North Charleston, SC 29405

**PRICE:**

---

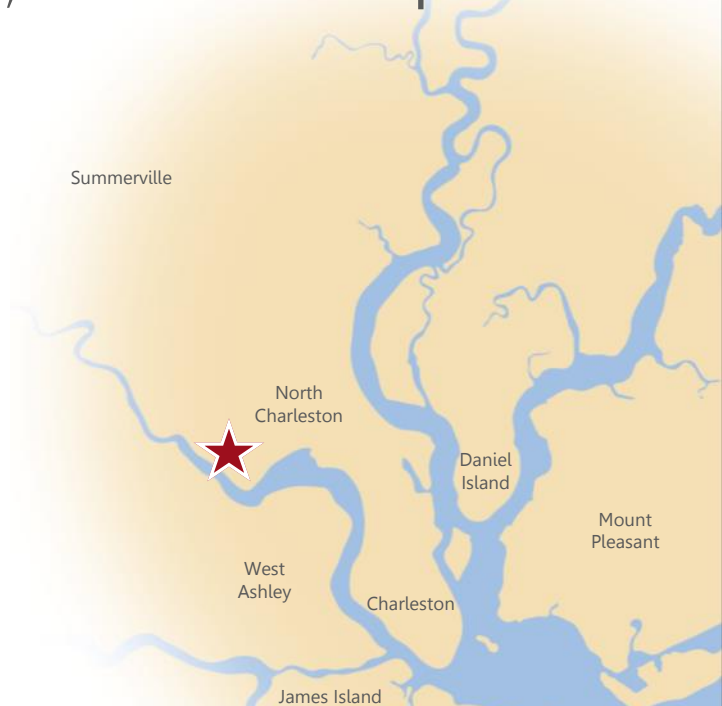
Lease: \$25.00/SF Full Service

**CONTACT:**

---

Reid Davis, CCIM, SIOR  
Direct/Cell: 843-270-2995 / Office: 843-277-4326  
RDavis@lee-associates.com

*Disclaimer: This is subject prior to sale, change in price, or removal from the market without notice.  
The information included in this transmittal, while based upon data supplied by the owners and other sources deemed to be reliable, is not in any way warranted by Lee & Associates.*





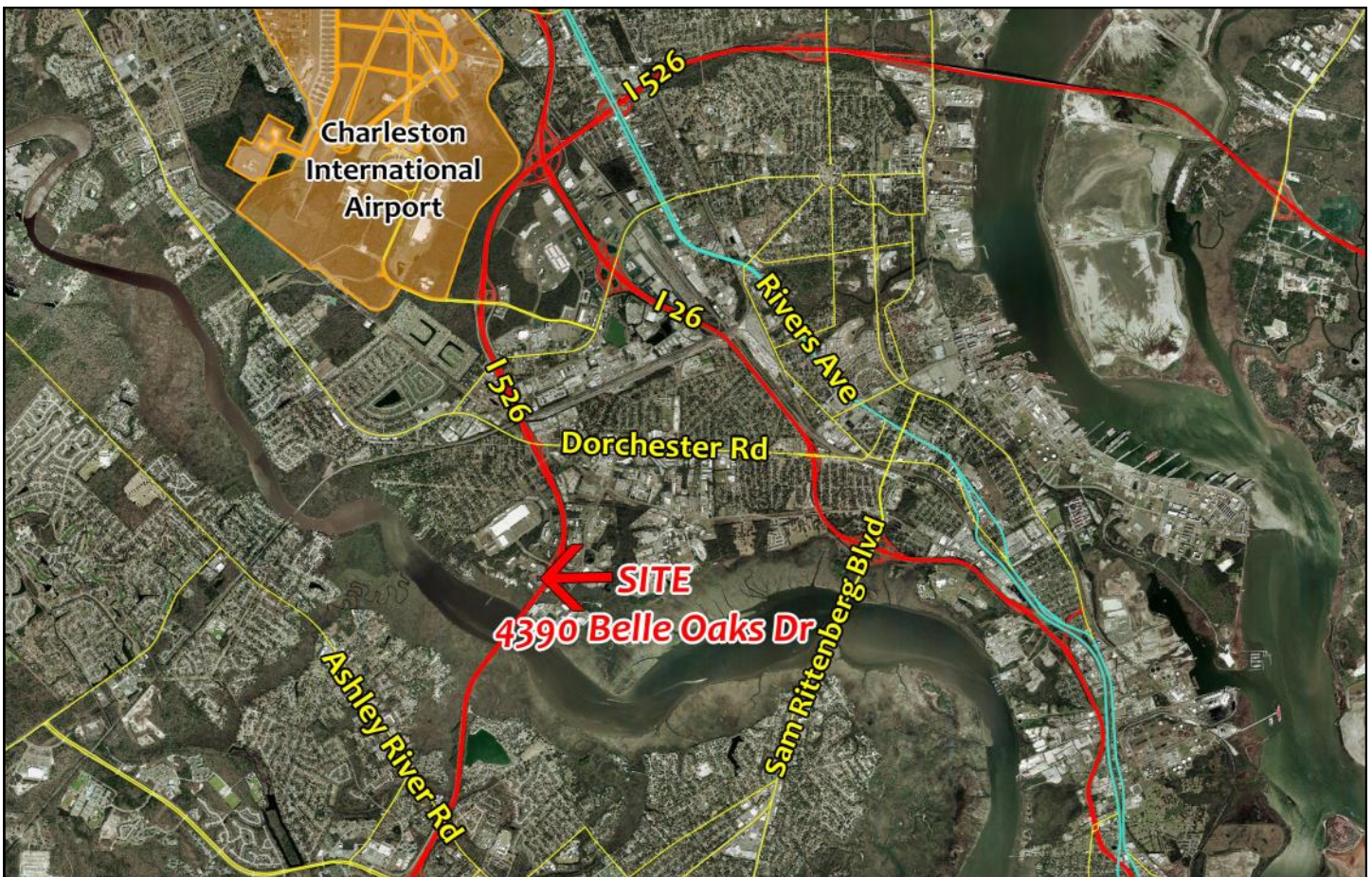
## ABOUT THE PROPERTY:

One of Charleston's largest Class A office multitenant buildings located in the area's premier office park. With a location within The Executive Park at Faber Place on I-526 in North Charleston, Ashley Overlook provides tenants with easy access to the entire tri-county area. Close proximity to I-26, numerous amenities, the airport, and local workforce. The 4 story 105,000 square foot building was built in 2007 as an efficient Class A suburban office product with an abundance of parking. Building has excellent interstate visibility with easy access and is one of the few multitenant office buildings in the market with On-site professional maintenance. Other tenants include Select Health, Springfield College, Shipco Transport, and CSX Transportation, Inc.

## AVAILABLE SUITES:

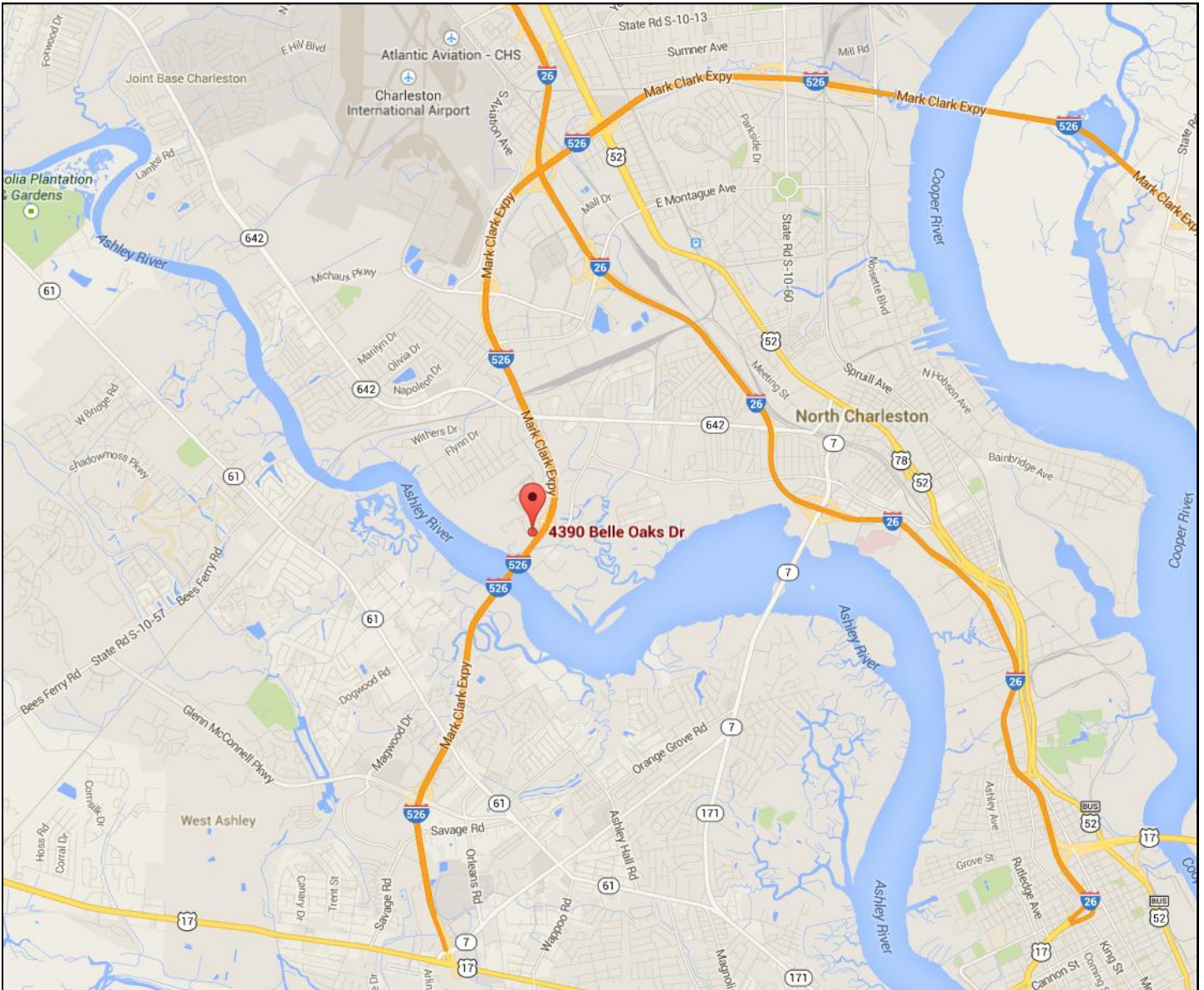
Suite 120:	3,470 SF	\$25.00/SF Full Service
Suite 150:	4,086 SF	\$25.00/SF Full Service

## AERIAL VIEW:

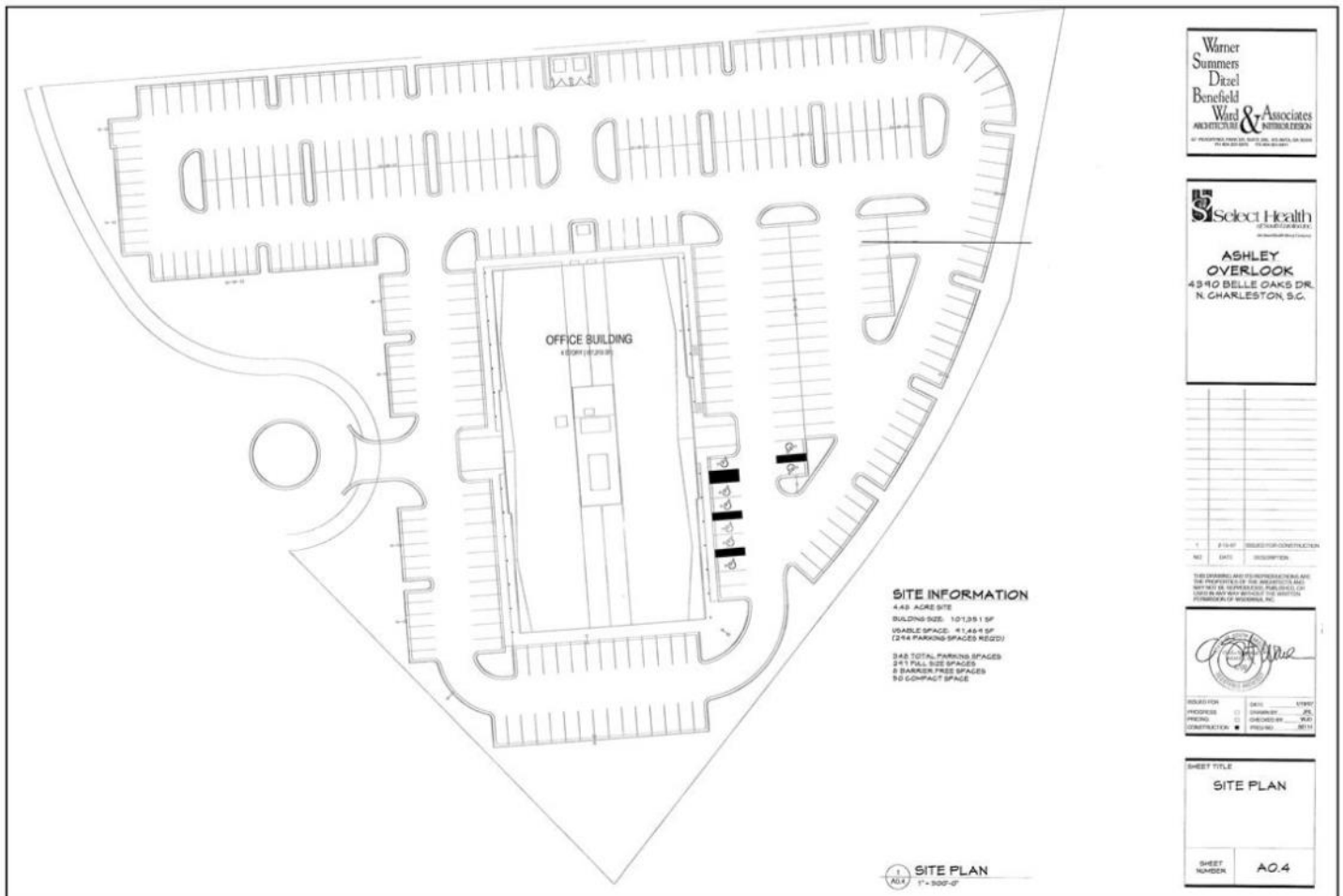




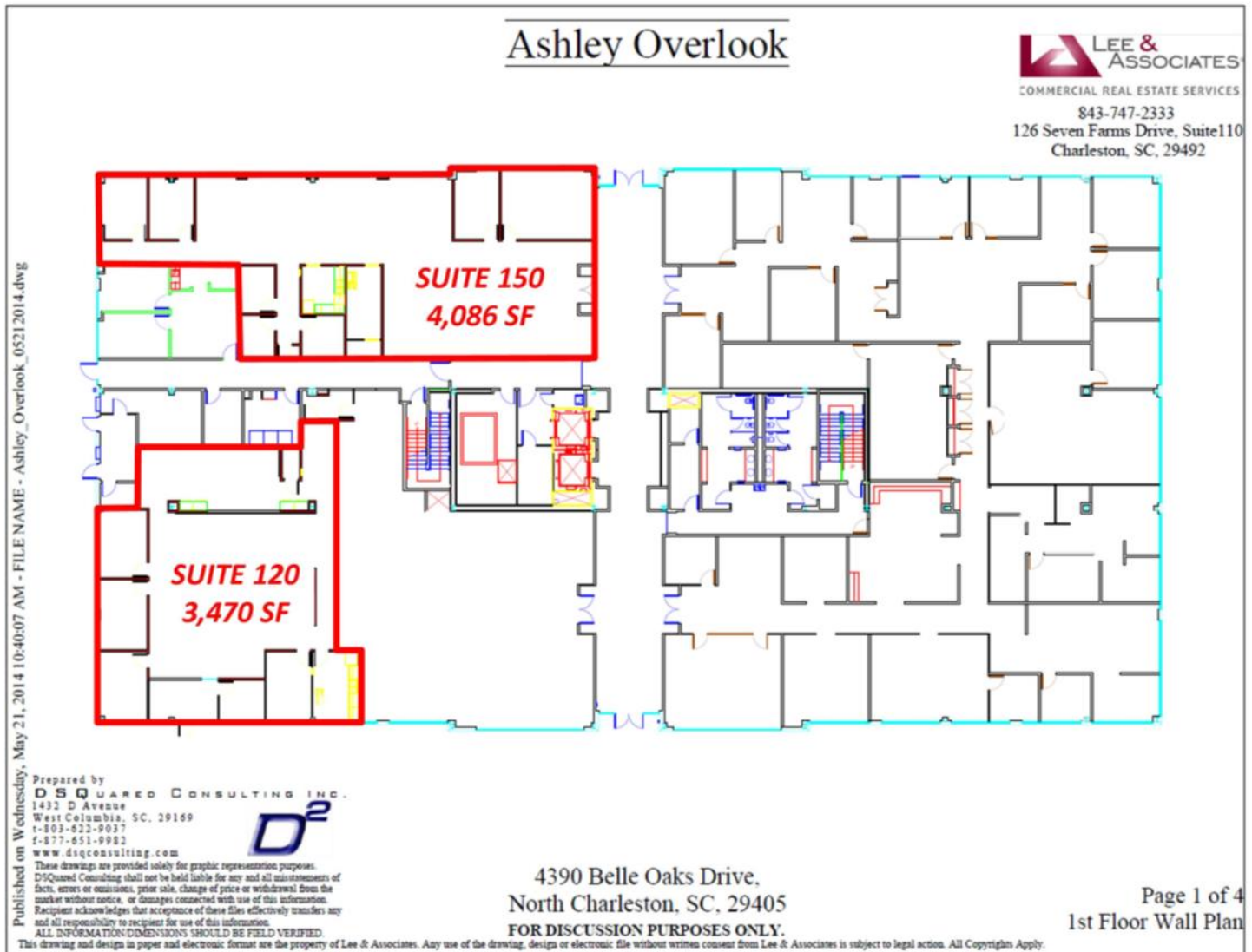
MAP VIEW:



**SITE PLAN:**



FLOORPLAN:





PROPERTY PHOTOS:



PROPERTY PHOTOS:

