

AVON | LANDING

E County Rd 300 N

I-74

B&O Trail

Ronald Reagan Pkwy

N County Rd 900 E

Mixed-use
industrial & office
development

I-70

avonlanding.com



AVON | LANDING

About Avon Landing

Avon Landing is a new mixed-use industrial and office development project in Hendricks County just west of Indianapolis.

Located along Ronald Reagan Parkway just south of Country Road 300 N, 2.7 miles from I-74 and 8.7 miles from I-70. Avon Landing provides quick access to I-465, downtown Indianapolis and the Indianapolis International Airport.

The 124 acre development offers rare Hendricks County land sites for sale and build-to-suit opportunities for a wide pool of users.

This rare opportunity combined with Hendricks County's growth and strong labor force makes this an ideal location for your company's next home.



Land for sale



Build-to-suit opportunities



TIF district



Ideal configuration for research & development, light manufacturing and distribution



Zoned PUD

AVON | LANDING

Concept Plan

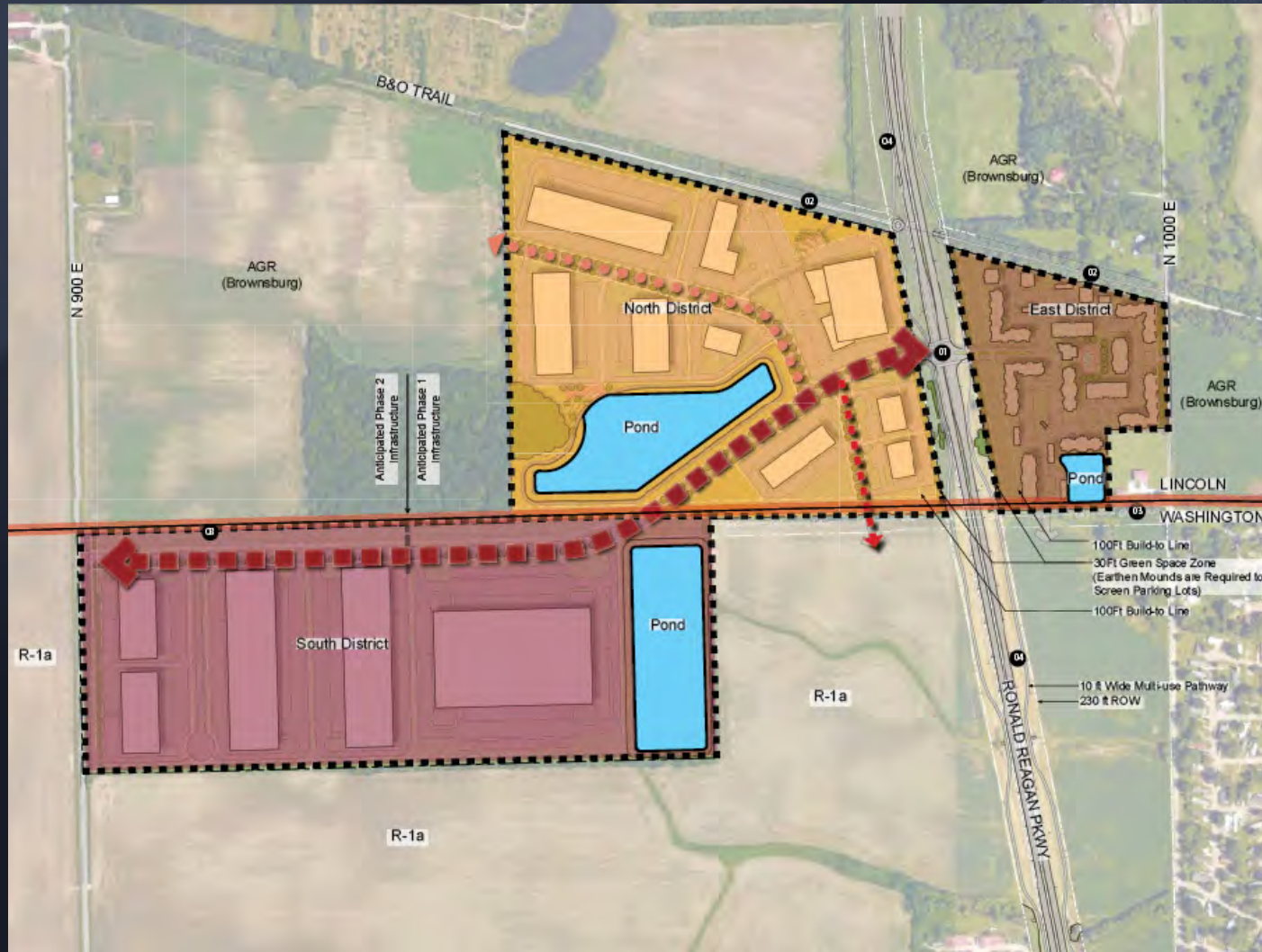


Proposed development plan can be modified to meet your requirements.

avonlanding.com

AVON | LANDING

Zoning



LEGEND

- East District
Multifamily-R-5
Gross Area: 16.99 Acres
- North District
Mixed Use
Gross Area: 58.79 Acres
- South District
Light Industrial-I-2
Gross Area: 65.48 Acres
- 01 Anticipated Intersection Location/
Future Stop Light
- 02 Anticipated Trail Access Node
- 03 Gas Line Easement
- 04 Sewer West/Water East Side of Ronald
Reagan Pkwy
- Township Line
- Anticipated Collector, Ingress / Egress
- Anticipated Collector Distributor,
Ronald Reagan Frontage Road
- Anticipated Local, Ingress / Egress
- Anticipated Master Storm System

NOTE: Other Than District Boundaries, Items Drawn
Are Conceptual and Shall be Approved Pursuant to
the Avon Landing PUD.



AVON | LANDING

About Avon, IN



Population within a
30 minute drive is
673,142



Employment
increased 2.2%
in the region in
2018



Ranked Top 20
Best Places to
live in the U.S. by
Money Magazine



Close proximity
to downtown
Indianapolis &
Indianapolis
International
Airport



Abundant
amenities located
along
US Highway 36



Hendricks County
population has
grown 2% in the
past year

AVON | LANDING

Convenient Location

VIEW PROPERTY WEBSITE:

AVONLANDING.COM

FOR MORE INFORMATION, CONTACT:

KEVIN W. ARCHER
+1 317 218 7217
kevin.archer@cushwake.com

FRITZ A. KAUFFMAN, SIOR, CCIM
+1 317 639 0486
fritz.kauffman@cushwake.com

 **CUSHMAN & WAKEFIELD**


HAGEMAN GROUP

©2018 Cushman & Wakefield. All rights reserved. The information contained in this communication is strictly confidential. This information has been obtained from sources believed to be reliable but has not been verified. NO WARRANTY OR REPRESENTATION, EXPRESS OR IMPLIED, IS MADE AS TO THE CONDITION OF THE PROPERTY (OR PROPERTIES) REFERENCED HEREIN OR AS TO THE ACCURACY OR COMPLETENESS OF THE INFORMATION CONTAINED HEREIN, AND SAME IS SUBMITTED SUBJECT TO ERRORS, OMISSIONS, CHANGE OF PRICE, RENTAL OR OTHER CONDITIONS, WITHDRAWAL WITHOUT NOTICE, AND TO ANY SPECIAL LISTING CONDITIONS IMPOSED BY THE PROPERTY OWNER(S). ANY PROJECTIONS, OPINIONS OR ESTIMATES ARE SUBJECT TO UNCERTAINTY AND DO NOT SIGNIFY CURRENT OR FUTURE PROPERTY PERFORMANCE.

