

SHOPPES at PARK MEADOWS

SWC County Line Rd & Yosemite St, Lone Tree, CO



PROPERTY OVERVIEW:

- Available: 1,252 SF & 1,547 SF
- Excellent location adjacent to Park Meadows Mall
- Close proximity to I-25
- Call Listing Agent for pricing

JOIN:



For more information,
contact:

Rich Otterstetter

o. 720-287-6860

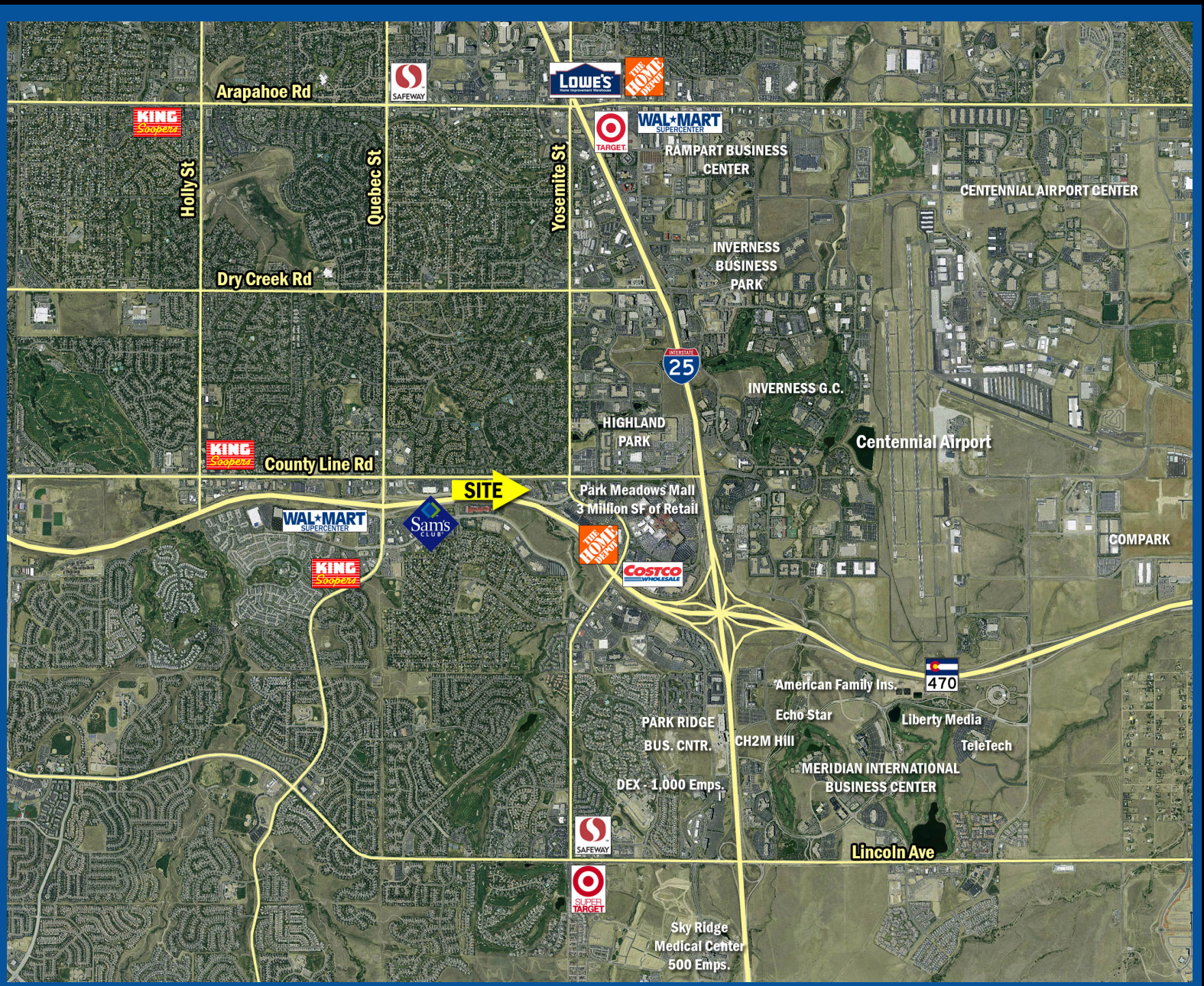
c. 303-883-1003

richo@creginc.com

CROSBIE
REAL ESTATE
GROUP

SHOPPES at PARK MEADOWS

SWC County Line Rd & Yosemite St, Lone Tree, CO



DEMOGRAPHICS

POPULATION



HOUSEHOLDS



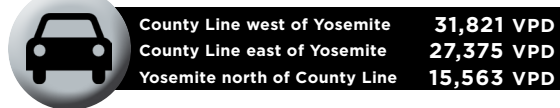
DAYTIME POPULATION



AVG. HH INCOME



AVG. DAILY TRAFFIC



The information contained in this brochure was compiled from reliable sources, however Crosbie Real Estate Group, LLC does not warrant nor guarantee the accuracy of the representations herein. Crosbie Real Estate Group, LLC and its broker associates, as listed, are representing the Landlord/Seller of this property. Different brokerage relationships exist.



For more information, contact:

Rich Otterstetter
 o. 720-287-6860
 c. 303-883-1003
richo@creginc.com

