

NEWLY REMODELED COWORK OFFICE

2815 Monroe Avenue | Rochester, NY 14618
Pittsford/Brighton Shared Professional Space



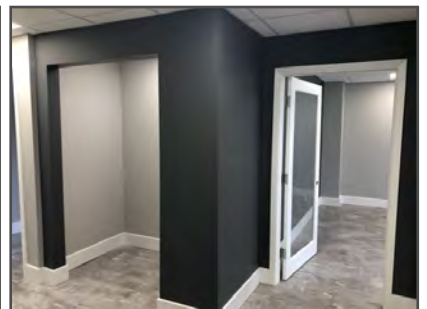
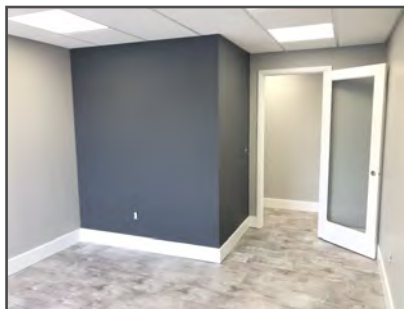
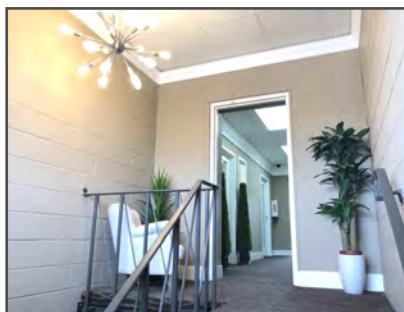
EXCLUSIVE LISTING

AVAILABLE OPPORTUNITY

- ◇ Second floor cowork office space for lease

PROPERTY HIGHLIGHTS

- Professional office setting with affordable prices and flexible terms
- Brand new, modern finishes
- Shared reception, conference room, kitchenette and restroom
- Plenty of parking in front and rear of building (with building entrances convenient to both lots)
- Easy expressway access (I-590)

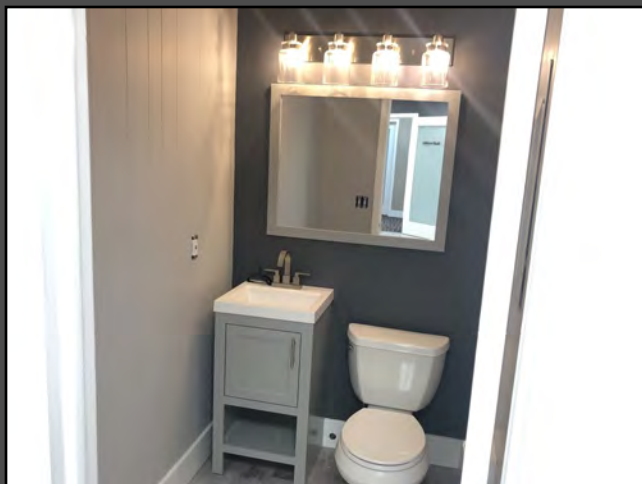
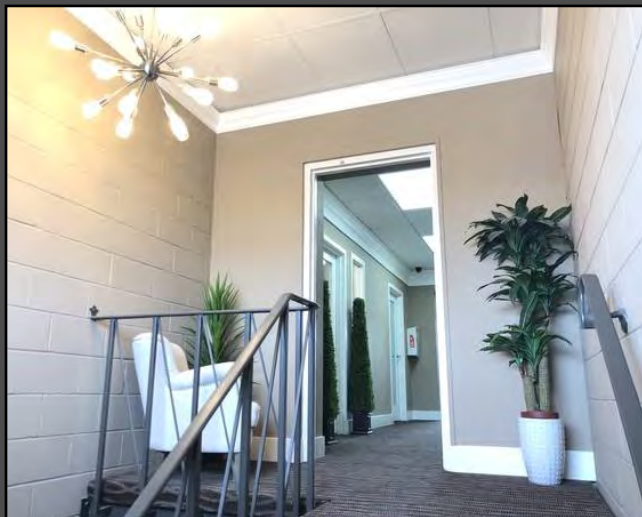


NEWLY REMODELED COWORK OFFICE

2815 Monroe Avenue | Rochester, NY 14618



Floor Plan & Interior Photos



NEWLY REMODELED COWORK OFFICE

2815 Monroe Avenue | Rochester, NY 14618



Site Aerial



2815 Monroe Avenue
Rochester, NY 14618
VentureBrokerageGroup.com

Michael Casserino | 585.766.3333
Michael@VentureBrokerageGroup.com

Janell Vanegas | 585.615.1102
Janell@VentureBrokerageGroup.com

NEWLY REMODELED COWORK OFFICE

2815 Monroe Avenue | Rochester, NY 14618



Area Restaurants, Shopping & Services



Demographic Snapshot

	1 mile	3 miles	5 miles
Population	6,286	72,934	225,074
Households	2,503	32,454	95,605
Average Household Income	\$137,422	\$111,475	\$81,907
Total Daytime Population	8,277	87,568	299,885