



FOR LEASE OR FOR SALE

31 North Redwood Road
North Salt Lake City, Utah 84054



Property Highlights

- 17,038 Total SF
First Floor Office: 7,342 SF
Second Floor Office: 2,847 SF
Warehouse: 6,849 SF
- (3) GL Doors
- T1 Line
- Clear Height: 20'
- Office Space Consists of Serveral Private Offices, Open Areas, Reception Areas and Breakroom/Kitchen
- Parking Ratio: 1.31/1,000 SF
- Easy Access to Legacy Parkway, I-15 and I-215

Demographics

	1 Mile	3 Mile	5 Mile
Population			
2017 Estimated Population	4,993	43,067	115,950
2022 Projected Population	5,709	47,164	124,680
Households			
2017 Estimated Households	1,587	13,371	37,642
2022 Projected Households	1,794	14,631	40,383
2017 Est. Median HH Income	\$62,012	\$76,906	\$63,836
2017 Est. Average HH Income	\$75,890	\$96,714	\$87,016
2017 Est. Per Capita HH Income	\$25,351	\$30,061	\$28,423

Source: U.S. Census Bureau, Census 2010 Data. Esri forecasts for 2017 and 2022.

Scot Boley
Director
+1 801 303 5548
scot.boleym@cushwake.com

Justin Welch
+1 801 876 6070
jjustin@cresutah.com

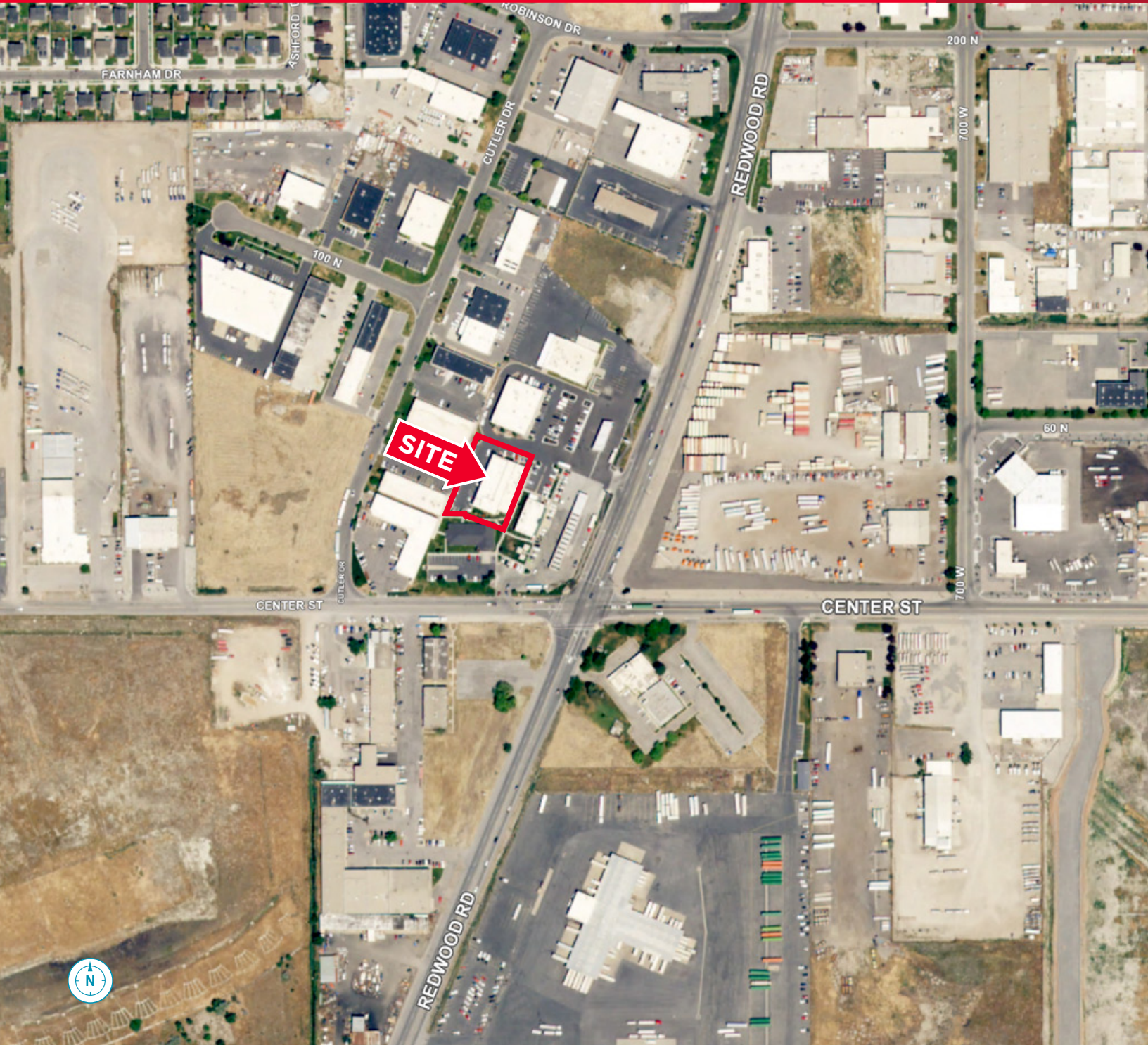
170 South Main Street, Suite 1600
Salt Lake City, UT 84101
Main +1 801 322 2000
Fax +1 801 322 2040
cushmanwakefield.com



FOR LEASE OR FOR SALE

31 North Redwood Road

North Salt Lake City, Utah 84054



Scot Boley
Director
+1 801 303 5548
scot.boleym@cushwake.com

Justin Welch
+1 801 876 6070
jjustin@cresutah.com

170 South Main Street, Suite 1600
Salt Lake City, UT 84101
Main +1 801 322 2000
Fax +1 801 322 2040
cushmanwakefield.com