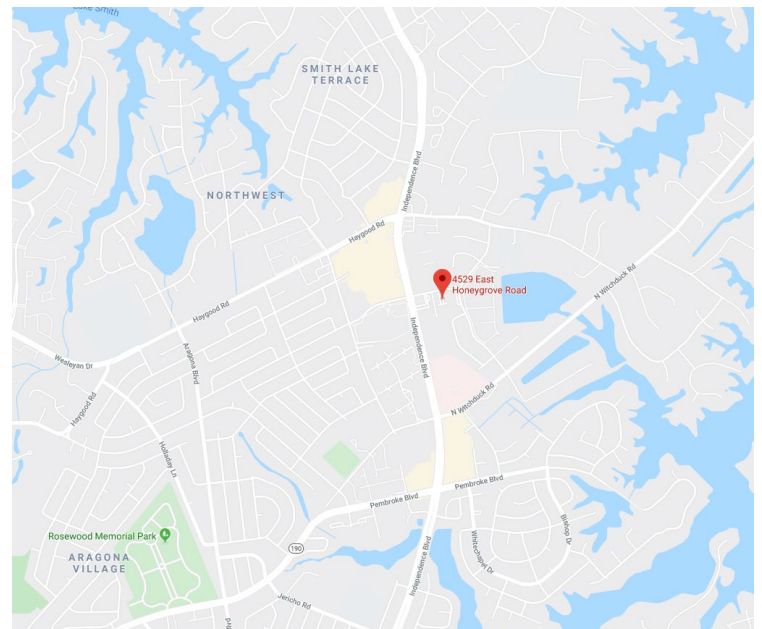




Property Features

- Three single-story freestanding buildings totaling 20,347 SF on 1.90 Acres
- Suite 203 – 1,350 SF
- Centrally located between Virginia Beach Town Center and Northampton Boulevard
- Ample free surface parking
- Motivated Landlord – submit an offer!
- Lease Rate: \$14.00/SF, Net utilities and janitorial
- Offices are suitable for insurance, medical, law, accounting and general office

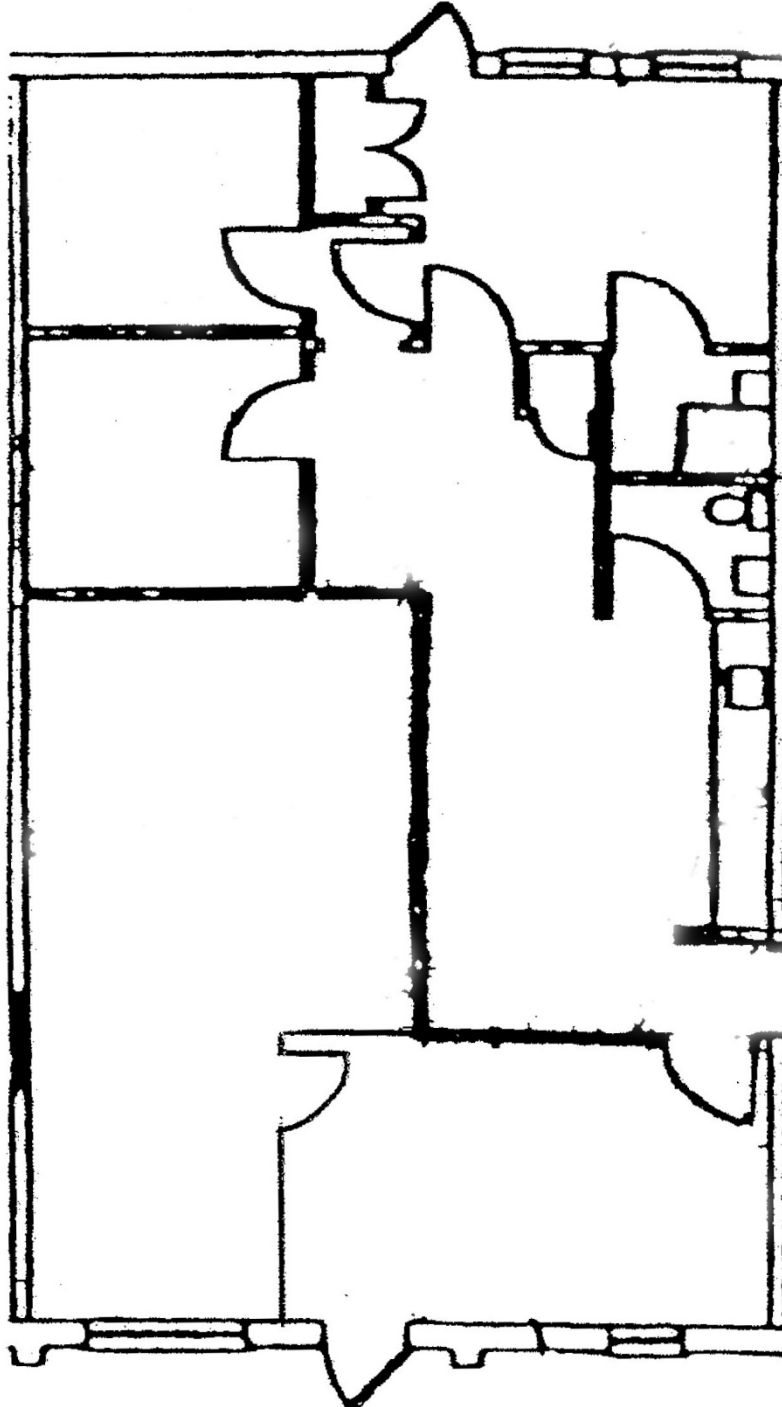


For more information, contact:

CHRISTINE KAEMPFE, CCIM, SIOR
Vice President
757 499 1384
christine.kaempfe@thalhimer.com

The Town Center of Virginia Beach
222 Central Park Ave., Suite 1820
Virginia Beach, VA 23462
www.thalhimer.com

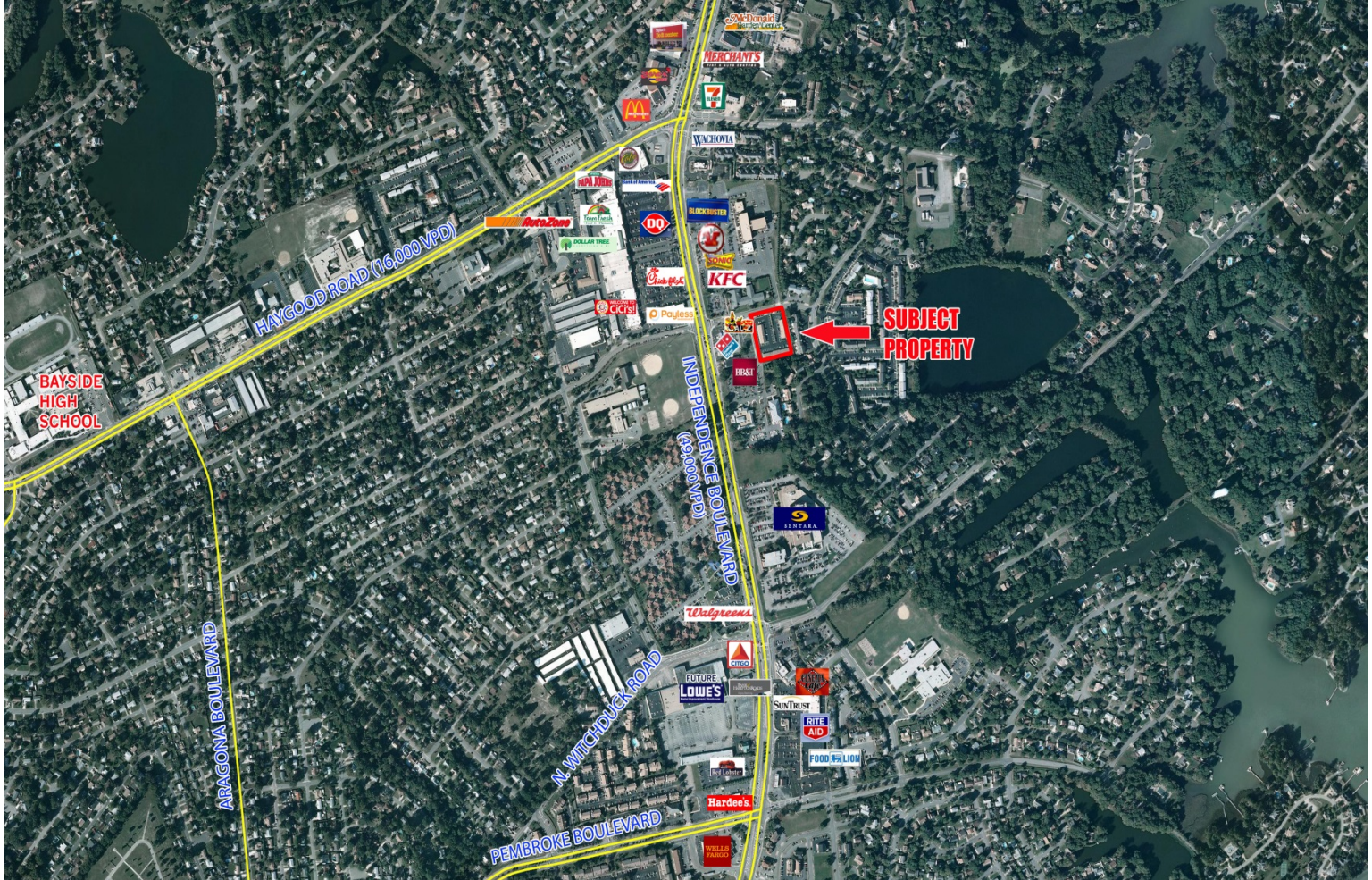
SUITE 203



For more information, contact:

CHRISTINE KAEMPFE, CCIM, SIOR
Vice President
757 499 1384
christine.kaempfe@thalhimer.com

The Town Center of Virginia Beach
222 Central Park Ave., Suite 1820
Virginia Beach, VA 23462
www.thalhimer.com



For more information, contact:

CHRISTINE KAEMPFE, CCIM, SIOR
Vice President
757 499 1384
christine.kaempfe@thalhimer.com

The Town Center of Virginia Beach
222 Central Park Ave., Suite 1820
Virginia Beach, VA 23462
www.thalhimer.com