

RARE CORNER JEWEL BOX OPPORTUNITY
IN THE HEART OF TIMES SQUARE

15/15
BROADWAY

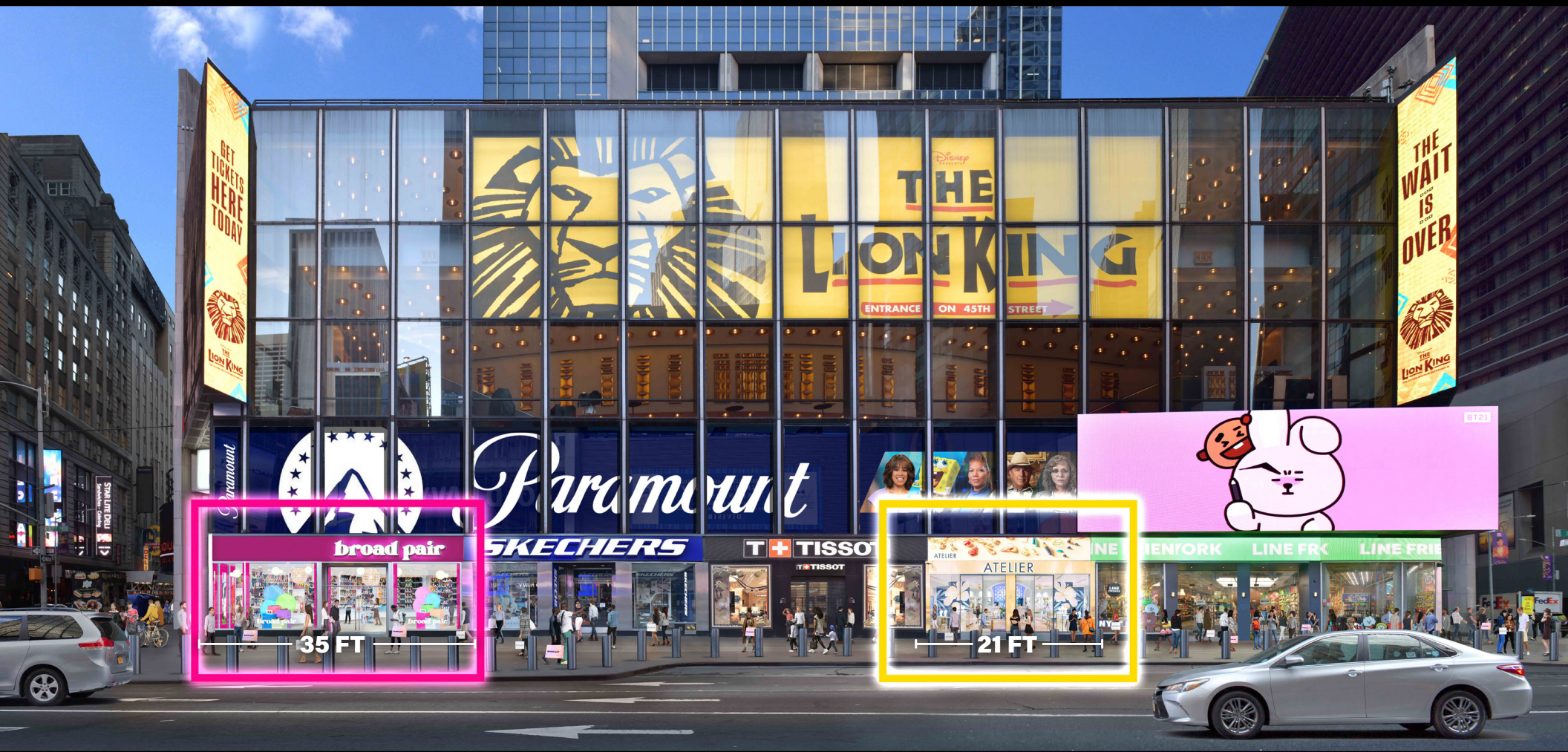


NEWMARK



SL GREEN RETAIL

EXPANSIVE BROADWAY FRONTAGE WITH LARGE LED SIGNAGE IN THE COVETED BOW TIE

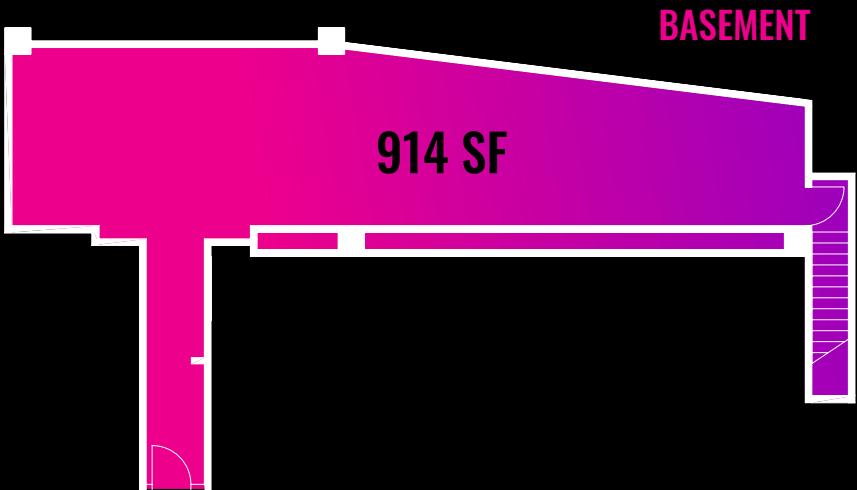
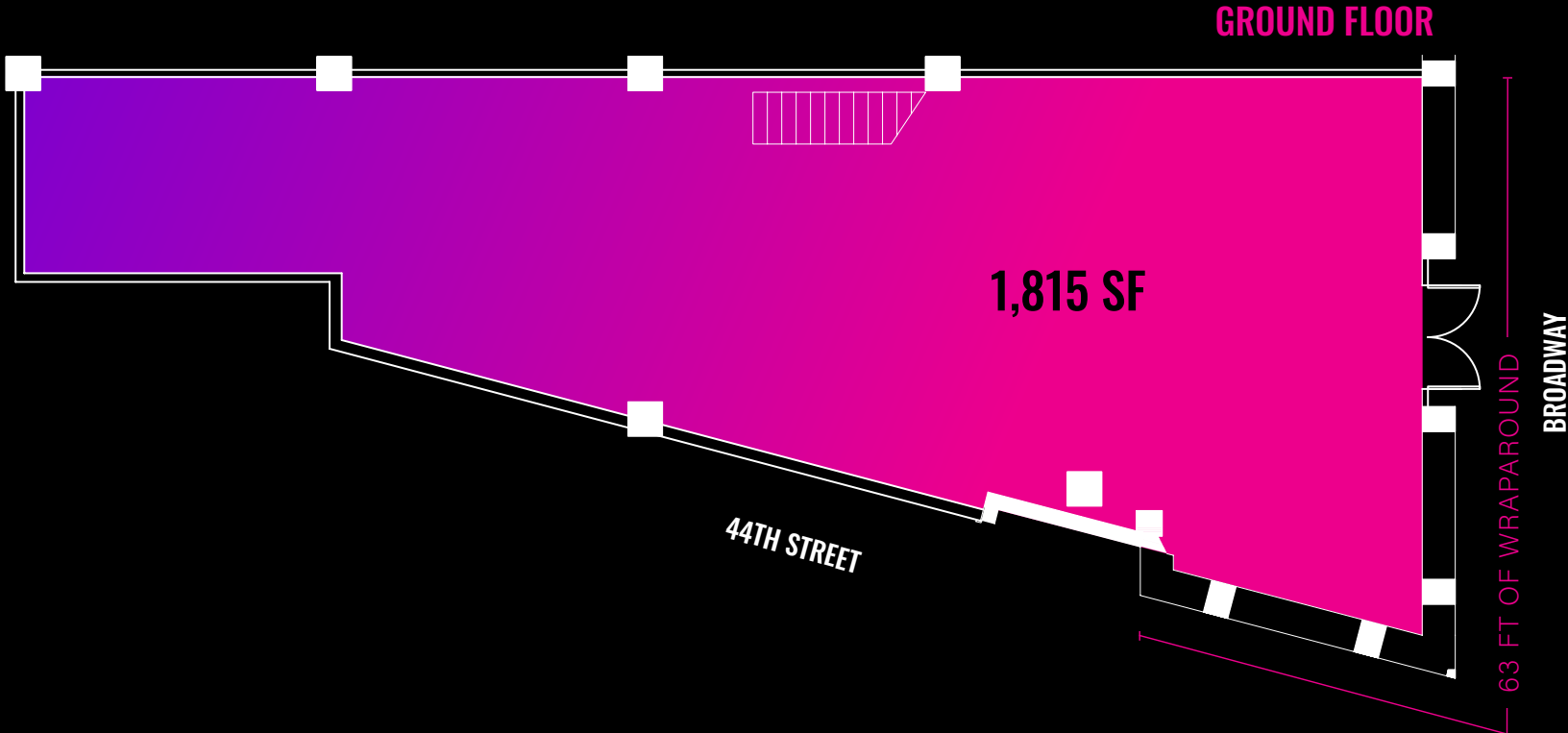


ADJACENT TO THE ENTRANCE OF VIACOM'S GLOBAL HEADQUARTERS AND MINSKOFF THEATRE - HOME OF BROADWAY'S "THE LION KING"

TWO BLOCKS FROM MULTI-ENTERTAINMENT DEVELOPMENT, TSX BROADWAY, INCLUDING A BRAND NEW LUXURY HOTEL, THEATER AND THE ONLY PERMANENT STAGE OVER TIMES SQUARE

CLOSE PROXIMITY TO MULTIPLE HOTELS, INCLUDING THE NEW HARD ROCK HOTEL DEVELOPMENT AND THE TIMES SQUARE EDITION

SPACE A DETAILS



NORTHWEST CORNER OF 44TH STREET

SIZE

GROUND FLOOR	1,815 SF
BASEMENT	914 SF

FRONTAGE
63 FT OF WRAPAROUND

SITE STATUS
FORMERLY OAKLEY AND RAYBAN

SPACE B DETAILS

**WEST BLOCK BETWEEN 44TH
AND 45TH STREETS**

SIZE

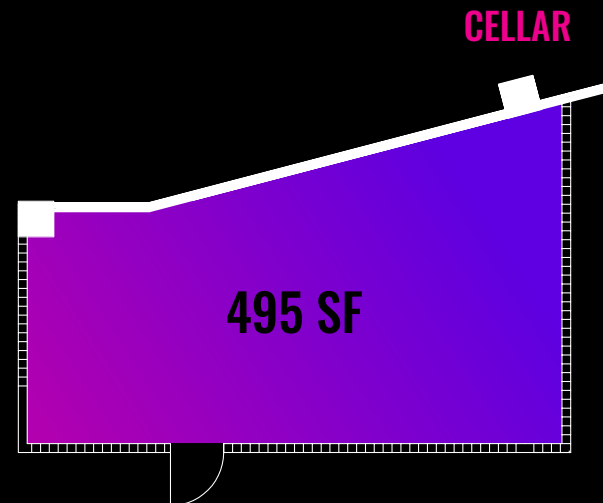
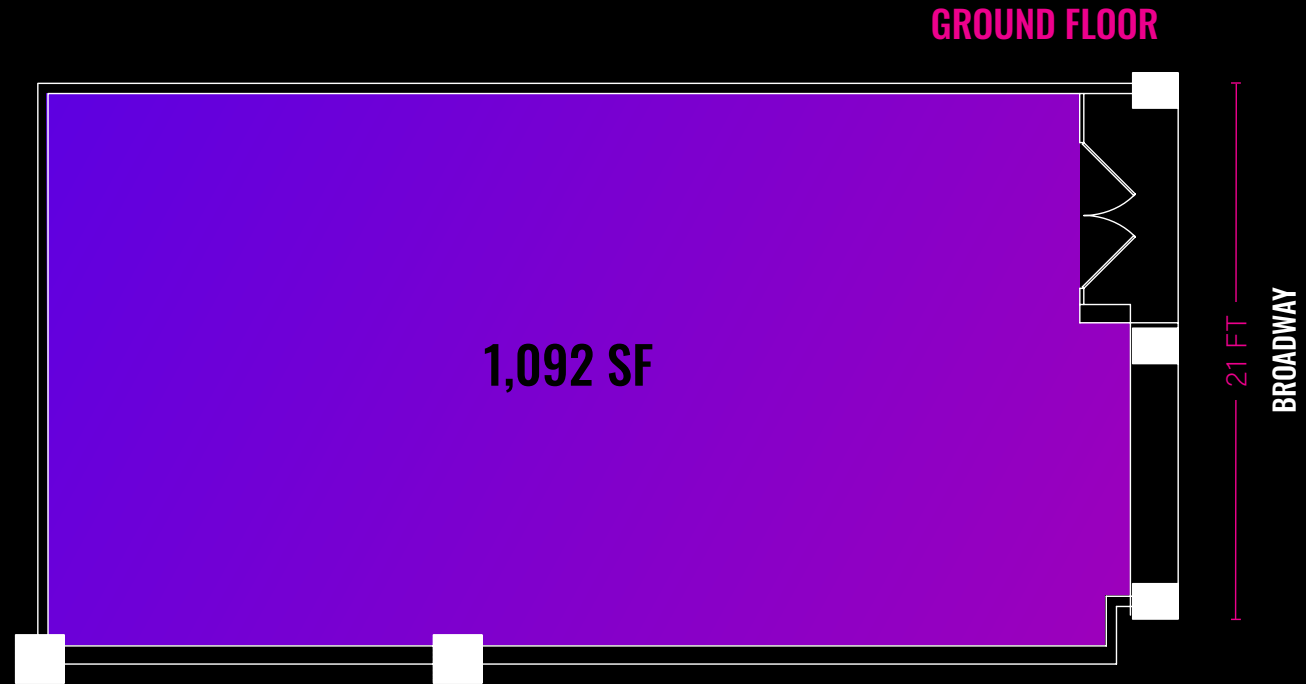
GROUND FLOOR 1,092 SF
CELLAR 495 SF

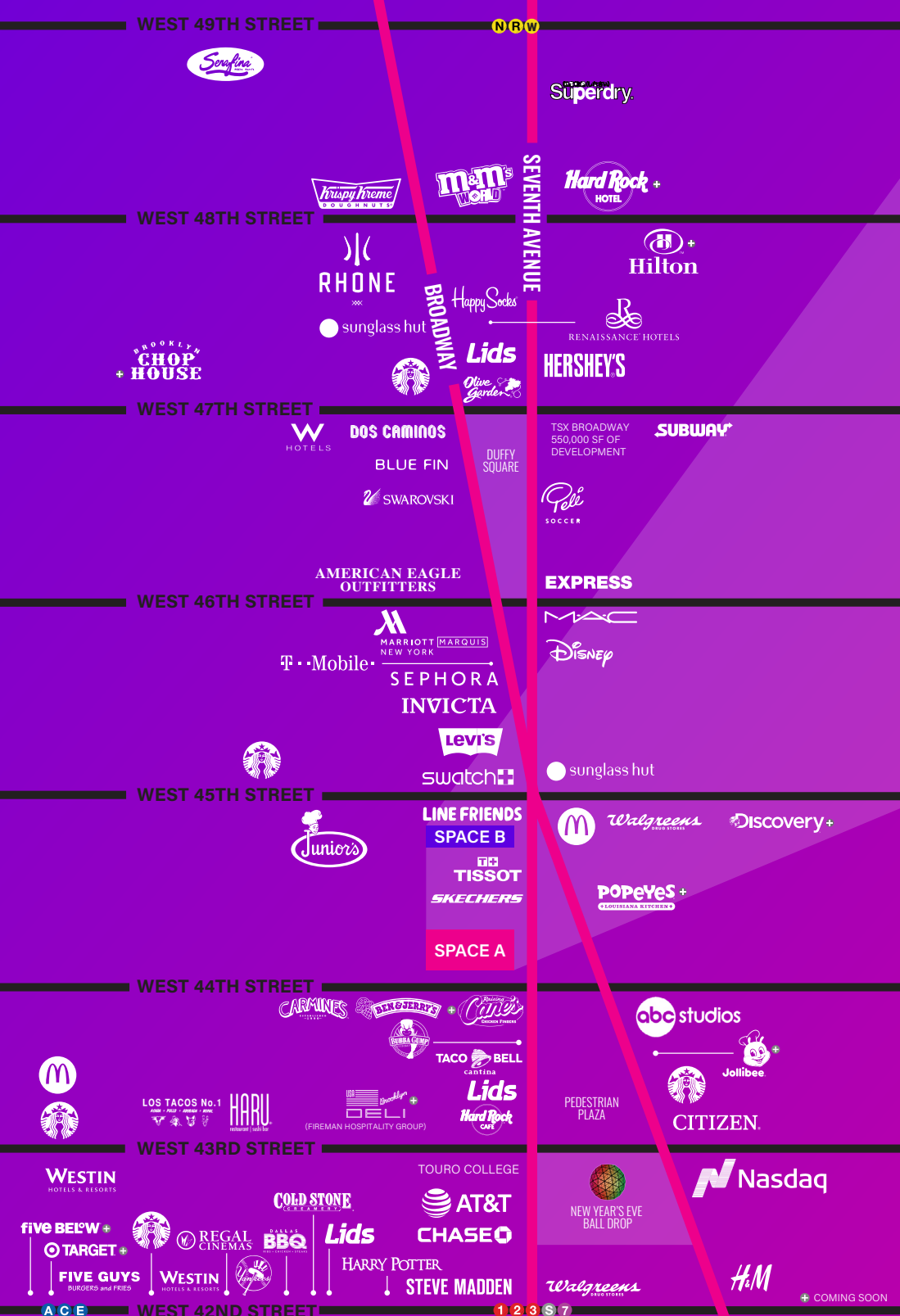
FRONTAGE

21 FT ON BROADWAY

SITE STATUS

FORMERLY KIKO COSMETICS





1515 BROADWAY

CONTACT

ROSS BERKOWITZ

212.916.3388 / ross.berkowitz@nmrk.com

ARIEL SCHUSTER

212.331.0132 / ariel.schuster@nmrk.com

GABRIEL STAAB

212.372.2053 / gabriel.staab@nmrk.com

JASON WECKER

212.916.3365 / jason.wecker@nmrk.com

NEWMARK



© 2022 NEWMARK. The information contained herein has been obtained from sources deemed reliable but has not been verified and no guarantee, warranty or representation, either express or implied, is made with respect to such information. Terms of sale or lease and availability are subject to change or withdrawal without notice. All renderings are conceptual.