



Office for lease

1172 Century Drive
Louisville, Colorado

Property Features

- Located within Centennial Valley Business Park with easy access to US 36
- Private Suite entrance with building signage available
- 24/7 access and control of HVAC
- Close proximity to numerous retail amenities
- Highly efficient space

Property Location



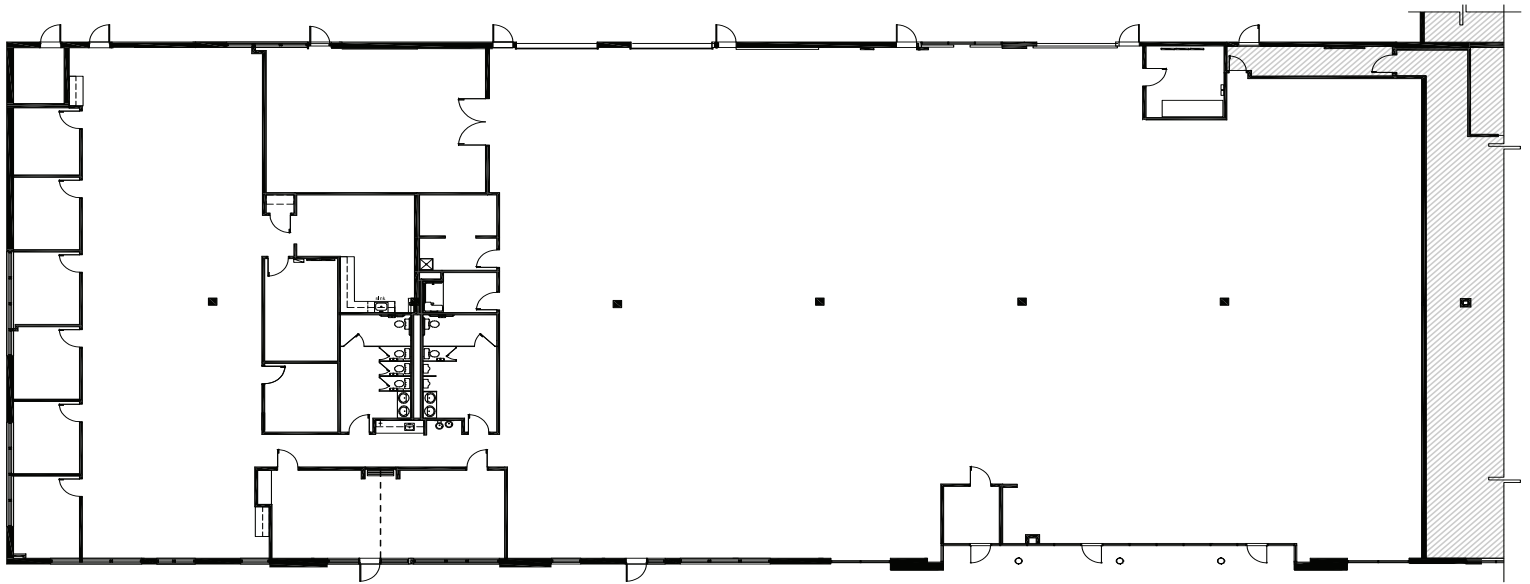
Building Highlights

Building address	1172 Century Drive Louisville, CO 80027
County	Boulder
Year built	1996
Total square feet	49,510 SF
Area available	18,799 SF
Lease rate	\$15.00 - \$15.50 / SF NNN
2018 CAM Est.	\$5.78 / SF NNN
Parking ratio	3.25 : 1,000 <i>(additional street parking available)</i>
Ceiling height	16' slab to deck 9' 6" dropped ceiling

Suite 280 - 18,799 SF

Suite Description:

- 6 private offices
- Grade level loading with open white boxed plan
- Suite has 1,600 AMP/3 phase



For leasing information, please contact:

Don Misner
+1 303 217 7957

don.misner@am.jll.com

Joseph Heath
+1 303 217 7959

joe.heath@am.jll.com

