



AVISON YOUNG

Inner Richmond For Lease

507 & 523 Clement Street
San Francisco, CA



Excellent
location on
Clement
Street and
6th Avenue



Located adjacent to
Schubert's Bakery
and Smart & Final
and across from
Green Apple Books
and Music, Neck
of the Woods, and
Burma Superstar



Heavy foot-
traffic



High-visibility
signage
opportunity

Get more information

Andrew Rebennack
415.349.3392
andrew.rebennack@avisonyoung.com
Re Lic: #02025935

Cameron Baird
415.301.3175
cameron.baird@avisonyoung.com
Re Lic: #01503816

507 Clement Street

- ±2,280 sf
- ADA bathroom
- Automatic sliding doors
- Skylights throughout
- Bright, airy space perfect for many uses

For Lease

507 & 523 Clement Street
San Francisco, CA



507 Clement Street

For Lease

507 & 523 Clement Street
San Francisco, CA



507 Clement Street

For Lease
507 & 523 Clement Street
San Francisco, CA



523 Clement Street

- ±1,870 sf
- Renovations underway
- Skylights throughout
- High ceilings

For Lease

507 & 523 Clement Street
San Francisco, CA



523 Clement Street

For Lease

507 & 523 Clement Street
San Francisco, CA

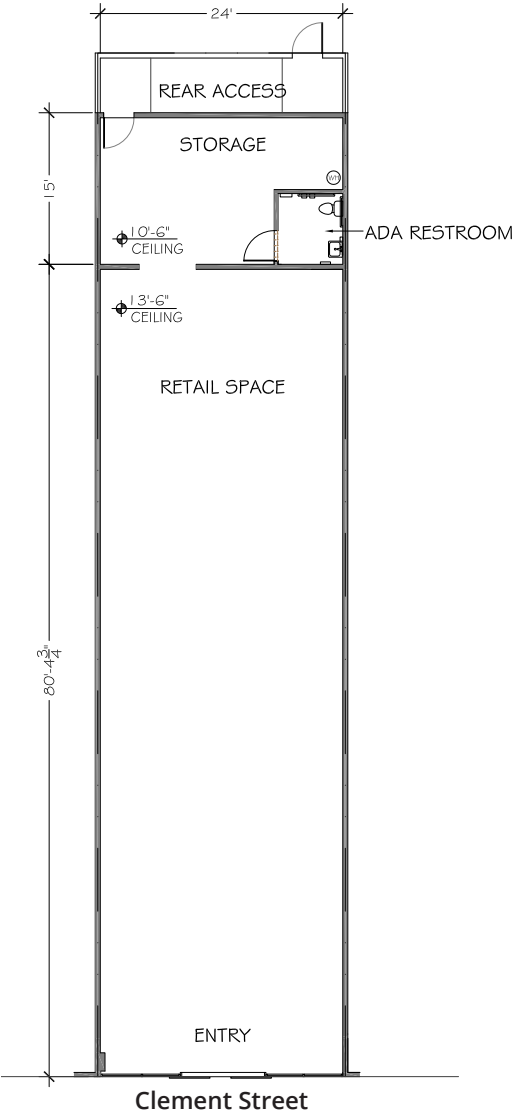


Floor plans

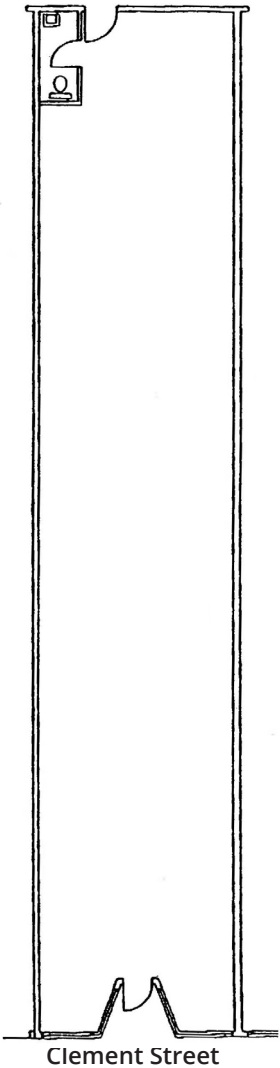
For Lease

507 & 523 Clement Street
San Francisco, CA

507 Clement
±2,280 sf



523 Clement
±1,870 sf



Andrew Rebennack
415.349.3392
andrew.rebennack@avisonyoung.com
Re Lic: #02025935

Cameron Baird
415.301.3175
cameron.baird@avisonyoung.com
Re Lic: #01503816

